



FRONT ELEVATION 'A'
BLOCK 1 - THREE STOREY TOWNHOUSES



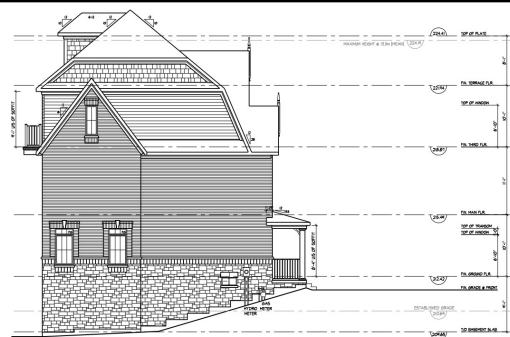
REAR ELEVATION 'A'
BLOCK 1 - THREE STOREY TOWNHOUSES



FRONT ELEVATION 'A'
BLOCK 2 - THREE STOREY TOWNHOUSES



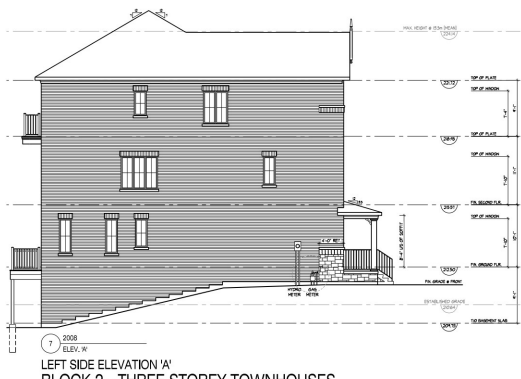
REAR ELEVATION 'A'
BLOCK 2 - THREE STOREY TOWNHOUSES



FLANKAGE ELEVATION 'A'
BLOCK 1 - THREE STOREY TOWNHOUSES



RIGHT SIDE ELEVATION 'A'
BLOCK 1 - THREE STOREY TOWNHOUSES



LEFT SIDE ELEVATION 'A'
BLOCK 2 - THREE STOREY TOWNHOUSES



RIGHT SIDE ELEVATION 'A'
BLOCK 2 - THREE STOREY TOWNHOUSES

PROPOSED ELEVATIONS

APPLICANT: Nest (VS) GP Inc.
10165 Victoria Square Blvd

FILE No. ZA19 179145 & SU19 179147

Q:\Geomatics\New Operation\2020 Agenda\SU\SU19_179147_ZA19_179145\Report Figures.mxd

