

## **Appendix 'C'**

### **Draft MTSA in Markham**

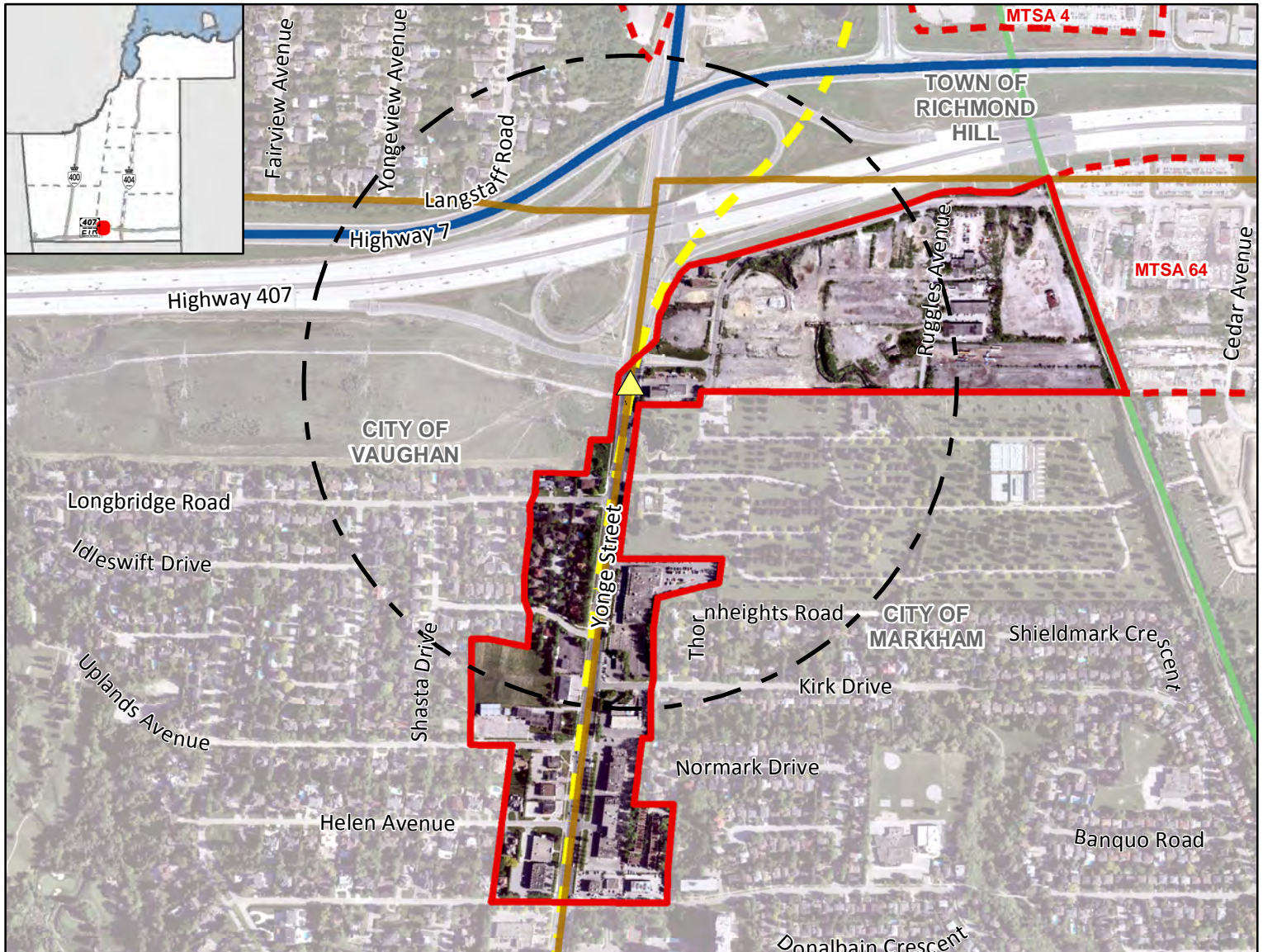
#### **Notes:**

1. York Region's draft delineations and minimum density targets for each of the MTSA's are provided in this Appendix. The methodology to develop the MTSA's was based on the following principles, among others:
  - Reinforce the planned regional and local municipal urban structure;
  - Provide a diverse range and mix of land uses, where appropriate;
  - Include existing higher density land uses and include areas that are anticipated to develop or redevelop to higher densities;
  - Contiguous alignment of MTSA boundaries where stations are closely spaced; and
  - Walkability to the station.
2. All of the Region's proposed MTSA mapping, except for the Royal Orchard Subway MTSA, was prepared under the Growth Plan, 2017 that required generally 500 metres around a transit station. The Region's Royal Orchard Subway MTSA mapping was released after the Growth Plan, 2019 came into effect which changed the definition of MTSA to include a radius of generally 500 – 800 metres.
3. The additional maps for the Post BRT and Milliken GO MTSA's that were prepared by Markham staff illustrate recommended changes to the draft delineations and include both the 500 and 800 metre radii.

# Langstaff/Longbridge Subway Station

## On Yonge Subway Extension Corridor

Near Longbridge Road and Yonge Street, Vaughan/Markham



### Legend

#### Major Transit Station

- Additional Subway
- 500m Radius
- Draft MTSA Boundary
- Adjacent Draft MTSA Boundary

#### Priority Transit Corridors

- BRT
- Other Transit Lines
- Subway

#### Base Map Information

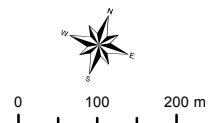
- Local Municipal Boundary

**Langstaff/  
Longbridge  
Subway Station**  
**Gross Area:**  
33.31 ha

### Density (People & Jobs per Hectare) <sup>1</sup>



### Population/Job Split <sup>2</sup>



The Regional Municipality of York  
Corporate Services,  
Planning and Economic Development  
March 2019

Data © Queen's Printer for  
Ontario 2003-2019  
See York.ca for disclaimer information.

<sup>1</sup> Values are rounded to the nearest 5 People & Jobs per Hectare

<sup>2</sup> Values are rounded to the nearest 5%

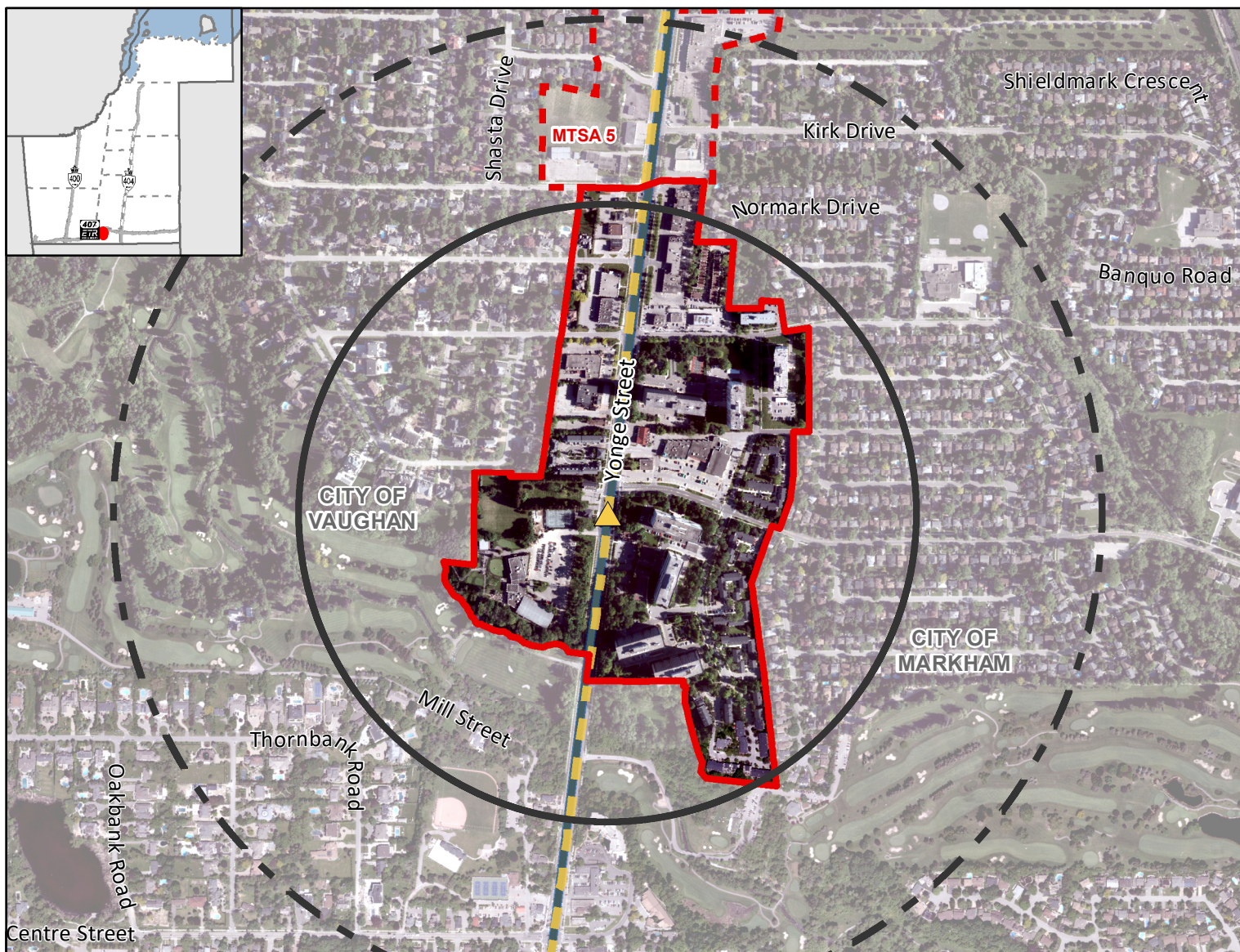


# Royal Orchard Subway Station

On Yonge St., near Royal Orchard Blvd., Markham / Vaughan

Attachment 3

MTSA 71



## Legend

### Major Transit Station

- Other Subway Station
- 500m Radius
- 800m Radius
- Draft MTSA Boundary

Adjacent Draft MTSA Boundary

### Other Transit Corridors

- Subway
- BRT

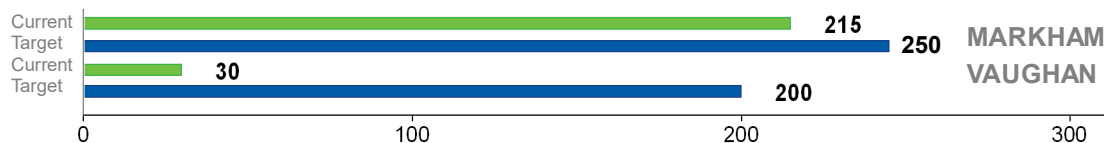
### Base Map Information

- Local Municipal Boundary

### Royal Orchard Subway

**Gross Area:**  
32.43 ha

### Density (People & Jobs per Hectare) <sup>1</sup>



### Population/Job Split <sup>2</sup>



0 100 200 m



The Regional Municipality of York  
Corporate Services, Planning and Economic  
Development  
February 2020

Data: © Queen's Printer for Ontario 2003-2020

See York.ca for disclaimer information.

<sup>1</sup> Values are rounded to the nearest 5 People & Jobs per Hectare

<sup>2</sup> Values are rounded to the nearest 5%



# Clark Subway Station

MTSA 6

## On Yonge Subway Extension Corridor

Near Clark Avenue and Yonge Street, Vaughan/Markham



### Legend

#### Major Transit Station

▲ Additional Subway

■ 500m Radius

□ Draft MTSA Boundary

□ Adjacent Draft MTSA Boundary

#### Other Transit Lines

■ Subway

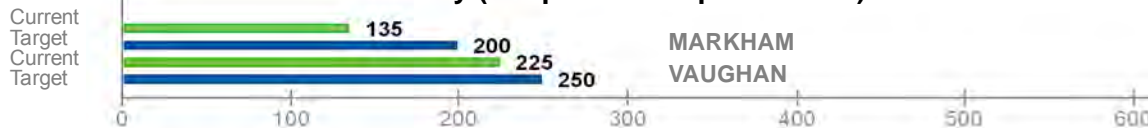
— Local Municipal Boundary

#### Clark Subway Station

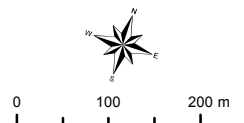
Gross Area:

39.10 ha

### Density (People & Jobs per Hectare) <sup>1</sup>



### Population/Job Split <sup>2</sup>



**York Region**

The Regional Municipality of York  
Corporate Services,  
Planning and Economic Development  
March 2019

Data © Queen's Printer for  
Ontario 2003-2019  
See York.ca for disclaimer information.

<sup>1</sup> Values are rounded to the nearest 5 People & Jobs per Hectare

<sup>2</sup> Values are rounded to the nearest 5%

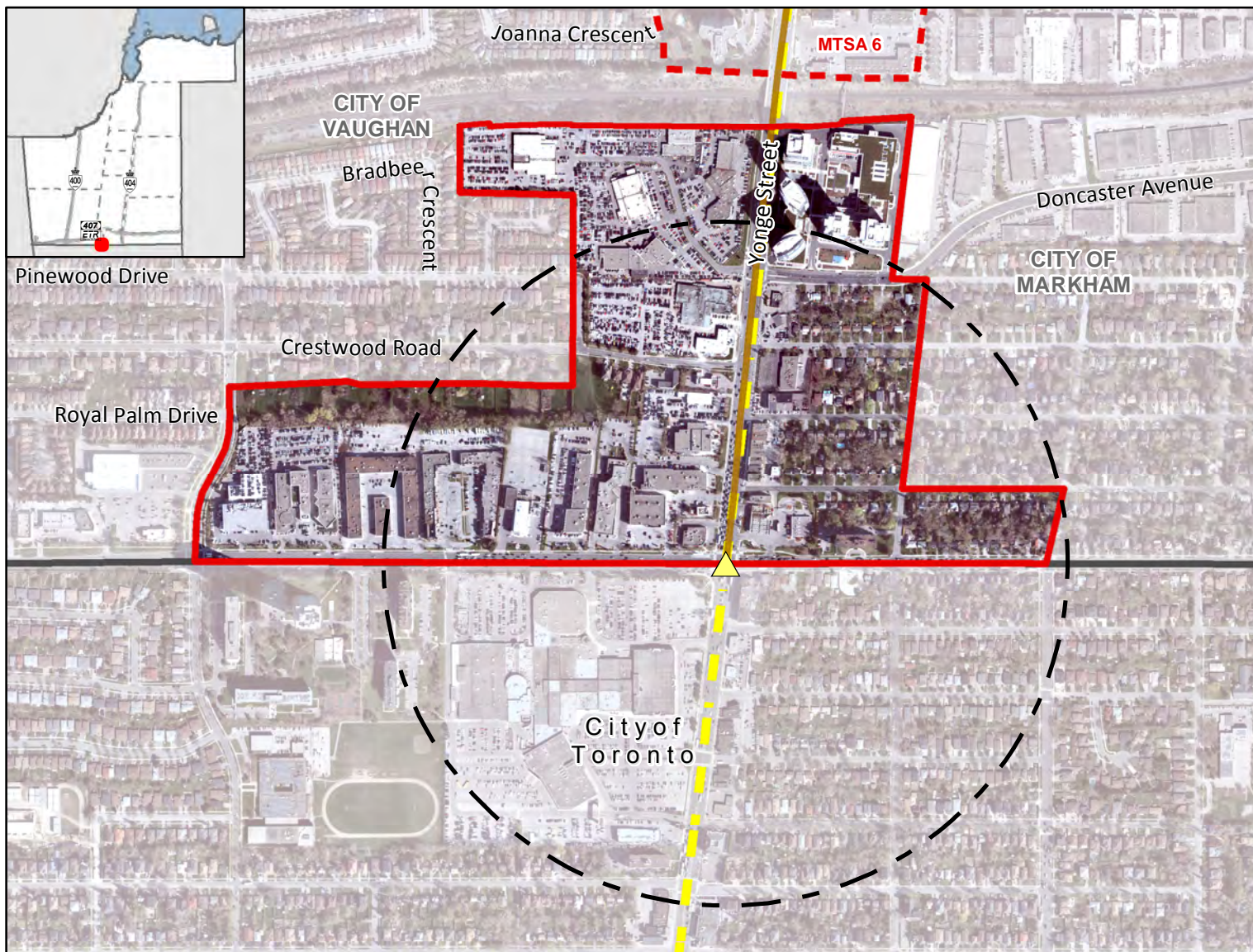


# Steeles Subway Station

MTSA 7

## On Yonge Subway Extension Corridor

Near Steeles Avenue and Yonge Street, Vaughan/Markham



### Legend

#### Major Transit Station

▲ Additional Subway

■ 500m Radius

□ Draft MTSA Boundary

□ Adjacent Draft MTSA Boundary

#### Other Transit Lines

— Subway

#### Base Map Information

— Regional Municipal Boundary

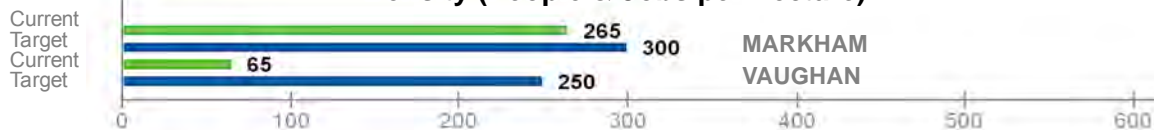
— Local Municipal Boundary

#### Steeles Subway Station

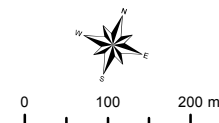
Gross Area:

49.17 ha

### Density (People & Jobs per Hectare) <sup>1</sup>



### Population/Job Split <sup>2</sup>



**York Region**

The Regional Municipality of York  
Corporate Services,  
Planning and Economic Development  
March 2019

Data © Queen's Printer for  
Ontario 2003-2019  
See York.ca for disclaimer information.

<sup>1</sup> Values are rounded to the nearest 5 People & Jobs per Hectare

<sup>2</sup> Values are rounded to the nearest 5%

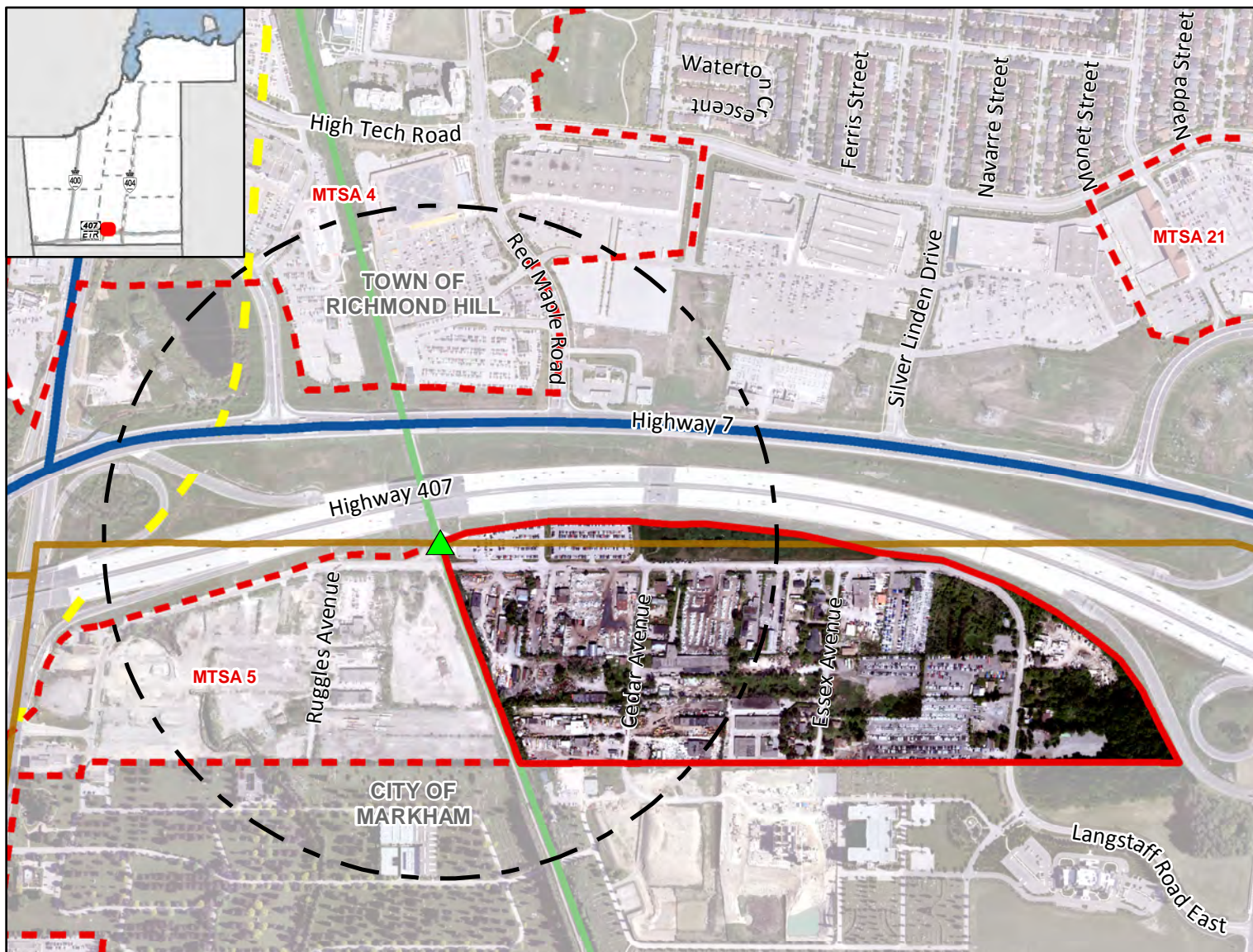


# Langstaff GO Station

## On Richmond Hill GO Line Corridor

### Near Langstaff Road and Cedar Avenue, Markham

MTSA 64



#### Legend

##### Major Transit Station

▲ Additional GO Rail

□ 500m Radius

□ Draft MTSA Boundary

□ Adjacent Draft MTSA Boundary

##### Priority Transit Corridors

— BRT

##### Other Transit Lines

— Subway

— GO Rail

##### Base Map Information

— Local Municipal Boundary

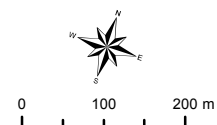
##### Langstaff GO Station

**Gross Area:**  
30.60 ha

#### Density (People & Jobs per Hectare) <sup>1</sup>



#### Population/Job Split <sup>2</sup>



**York Region**

The Regional Municipality of York  
Corporate Services,  
Planning and Economic Development  
March 2019

Data © Queen's Printer for  
Ontario 2003-2019

See York.ca for disclaimer information.

<sup>1</sup> Values are rounded to the nearest 5 People & Jobs per Hectare

<sup>2</sup> Values are rounded to the nearest 5%

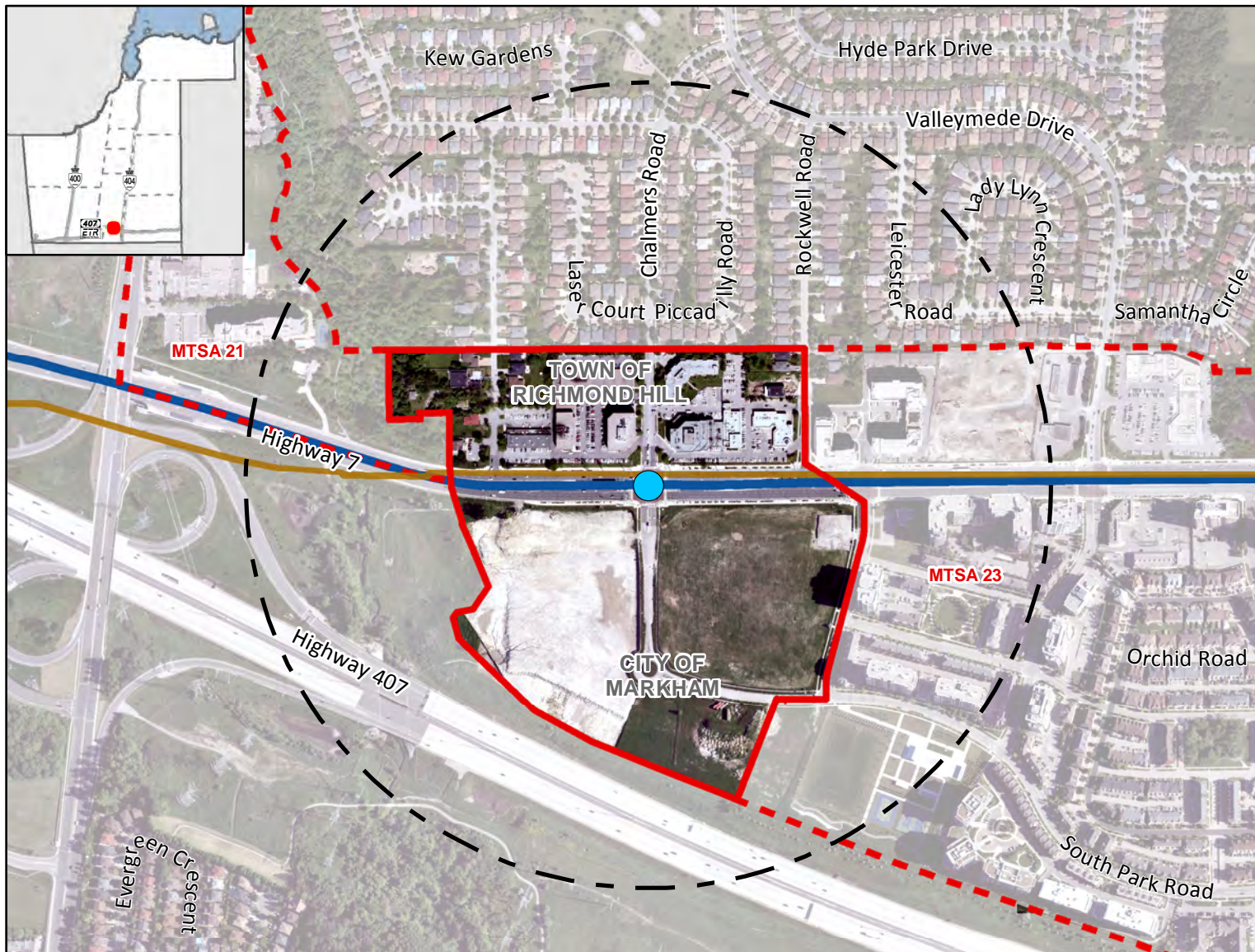


# Chalmers BRT Station

MTSA 22

## On Highway 7 BRT Corridor

Along Highway 7 at Chalmers Road/South Park Road, Markham/Richmond Hill



### Legend

#### Major Transit Station

- Required BRT
- 500m Radius
- Draft MTSA Boundary
- Adjacent Draft MTSA Boundary

#### Priority Transit Corridors

— BRT

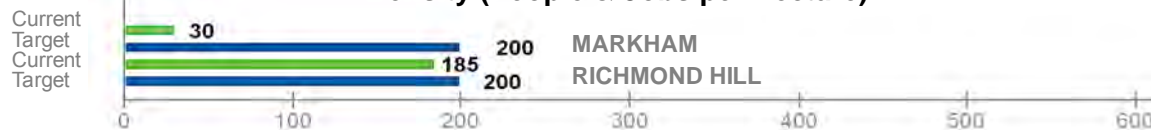
#### Base Map Information

— Local Municipal Boundary

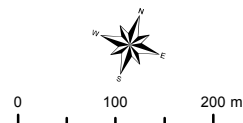
#### Chalmers BRT Station

**Gross Area:**  
22.60 ha

### Density (People & Jobs per Hectare) <sup>1</sup>



### Population/Job Split <sup>2</sup>



**York Region**

The Regional Municipality of York  
Corporate Services,  
Planning and Economic Development  
March 2019

Data © Queen's Printer for  
Ontario 2003-2019  
See York.ca for disclaimer information.

<sup>1</sup> Values are rounded to the nearest 5 People & Jobs per Hectare

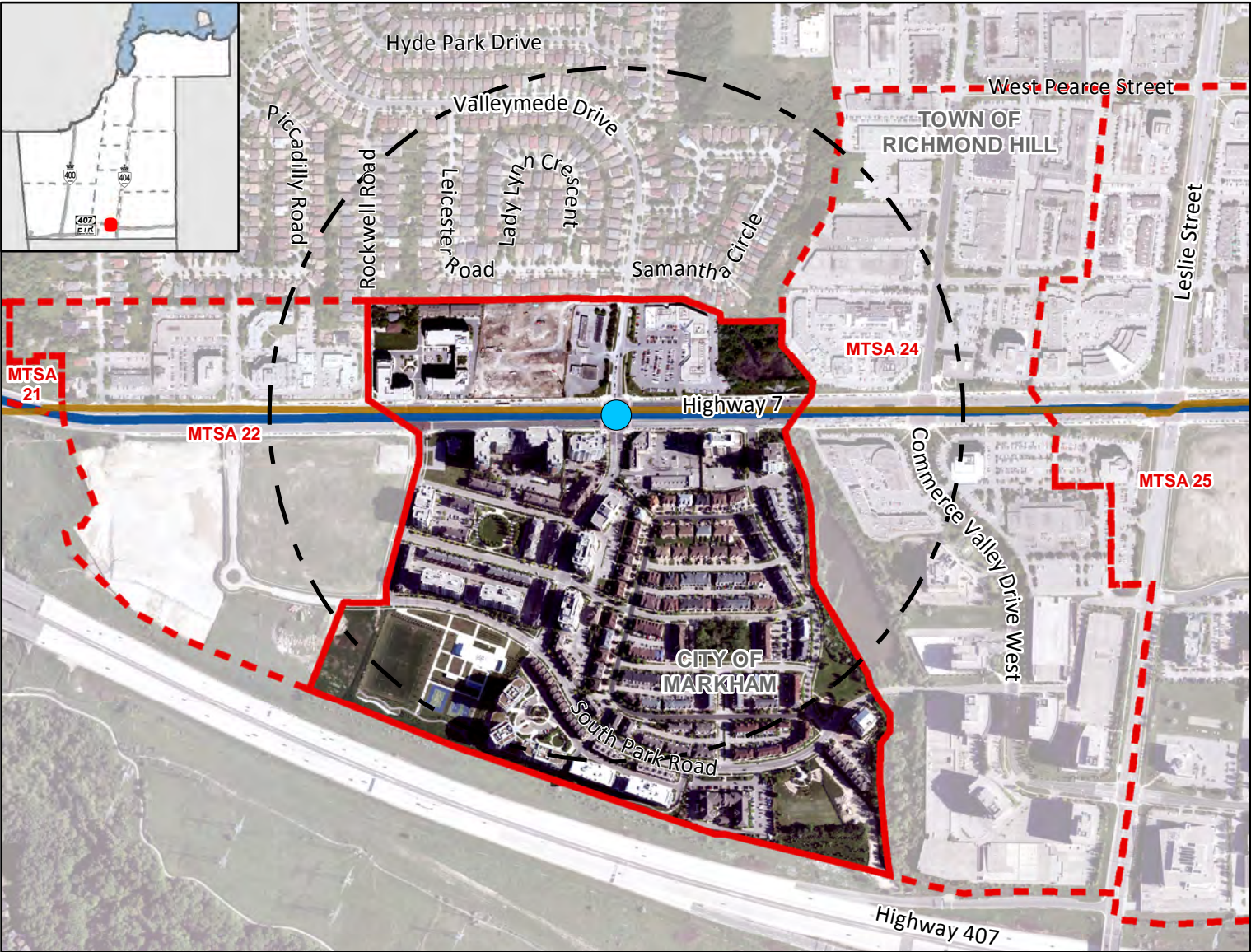
<sup>2</sup> Values are rounded to the nearest 5%



# Valleymede BRT Station

## On Highway 7 BRT Corridor

Along Highway 7 at Valleymede Drive/Times Avenue, Markham/Richmond Hill



### Legend

#### Major Transit Station

- Required BRT
- 500m Radius
- Draft MTSA Boundary
- Adjacent Draft MTSA Boundary

#### Priority Transit Corridors

BRT

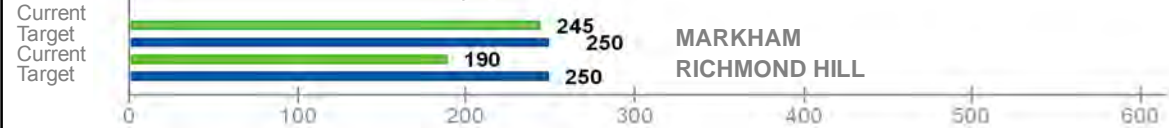
#### Base Map Information

Local Municipal Boundary

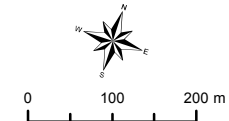
#### Valleymede BRT Station

Gross Area:  
47.07 ha

### Density (People & Jobs per Hectare) <sup>1</sup>



### Population/Job Split <sup>2</sup>



The Regional Municipality of York  
Corporate Services,  
Planning and Economic Development  
March 2019  
Data: © Queen's Printer for  
Ontario 2003-2019  
See York.ca for disclaimer information.

<sup>1</sup> Values are rounded to the nearest 5 People & Jobs per Hectare

<sup>2</sup> Values are rounded to the nearest 5%

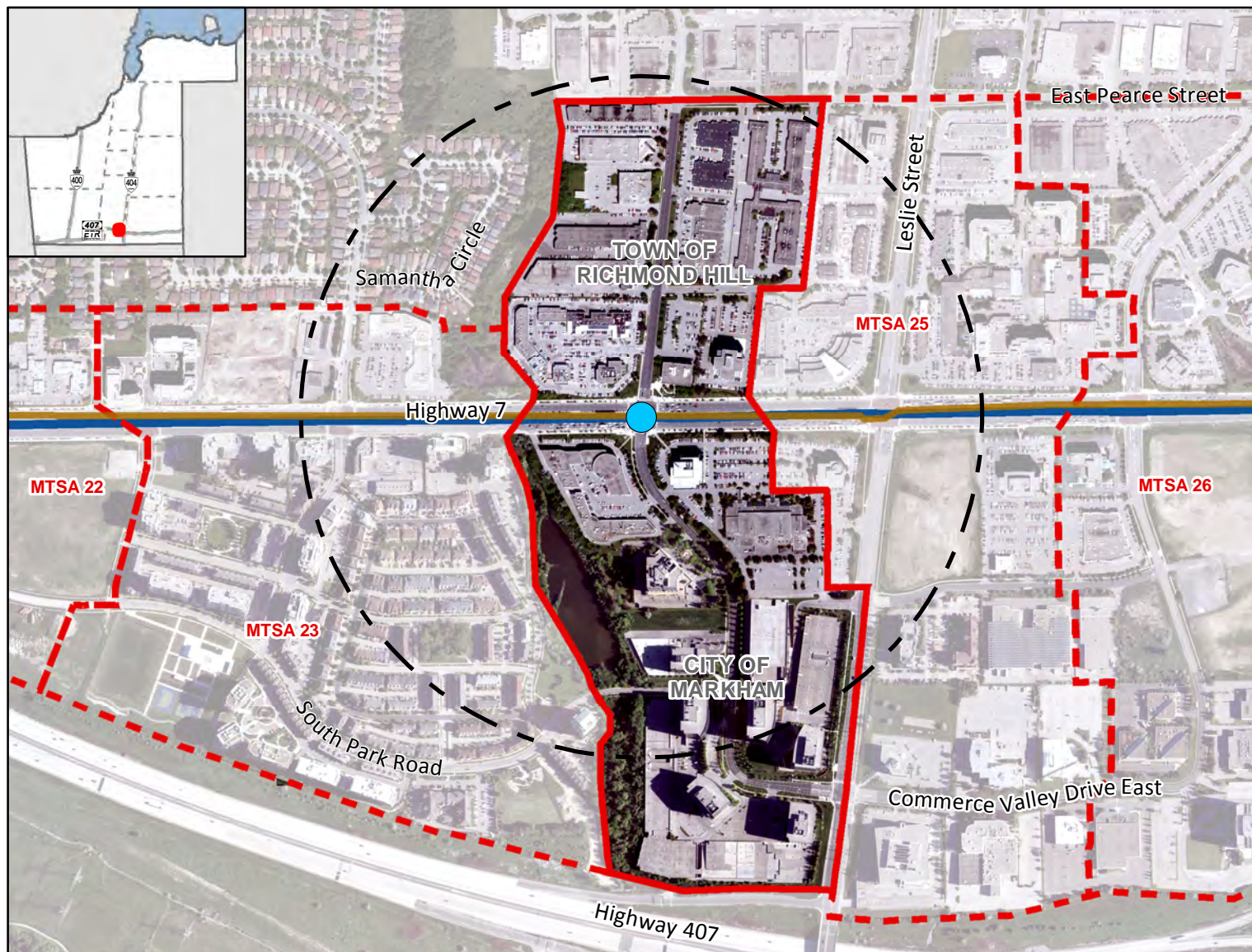


# West Beaver Creek BRT Station

MTSA 24

## On Highway 7 BRT Corridor

Along Highway 7 at West Beaver Creek Rd/Commerce Valley Dr W, Markham/Richmond Hill



### Legend

#### Major Transit Station

- Required BRT
- 500m Radius
- Draft MTSA Boundary
- Adjacent Draft MTSA Boundary

#### Priority Transit Corridors

— BRT

#### Base Map Information

— Local Municipal Boundary

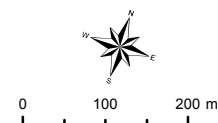
#### West Beaver Creek BRT Station

**Gross Area:**  
44.36 ha

### Density (People & Jobs per Hectare) <sup>1</sup>



### Population/Job Split <sup>2</sup>



**York Region**

The Regional Municipality of York  
Corporate Services,  
Planning and Economic Development  
March 2019

Data © Queen's Printer for  
Ontario 2003-2019  
See York.ca for disclaimer information.

<sup>1</sup> Values are rounded to the nearest 5 People & Jobs per Hectare

<sup>2</sup> Values are rounded to the nearest 5%

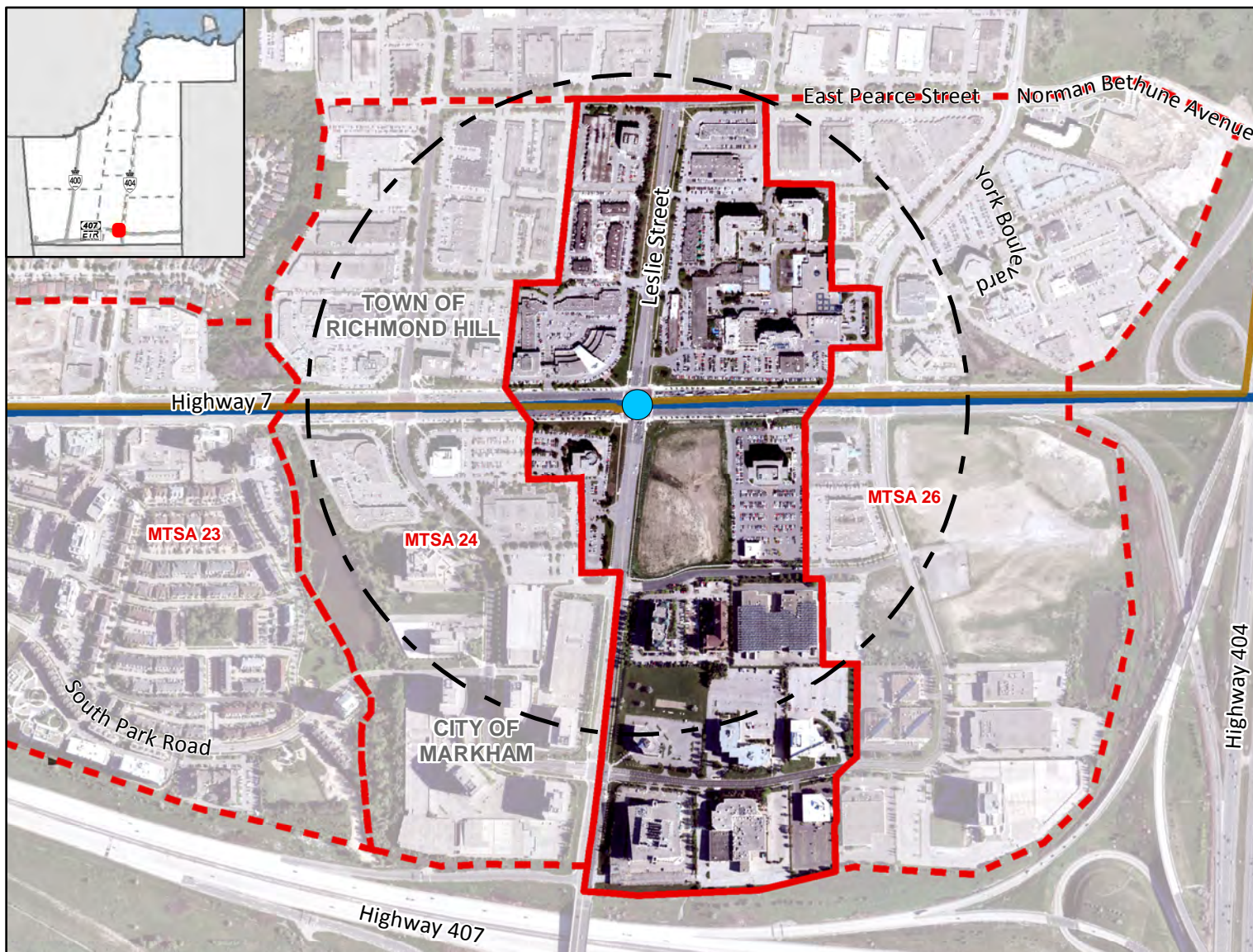


# Leslie-Highway 7 BRT Station

MTSA 25

## On Highway 7 BRT Corridor

Along Highway 7 at Leslie Street, Markham/Richmond Hill



### Legend

#### Major Transit Station

- Required BRT
- 500m Radius
- Draft MTSA Boundary
- Adjacent Draft MTSA Boundary

#### Priority Transit Corridors

— BRT

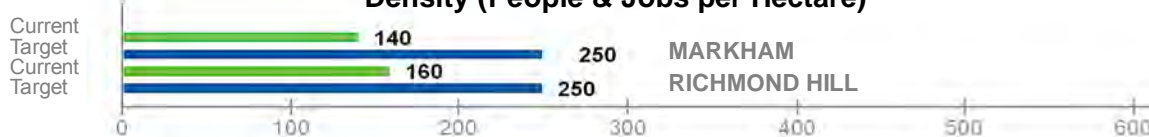
#### Base Map Information

— Local Municipal Boundary

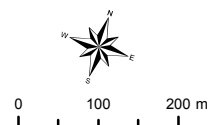
#### Leslie-Highway 7 BRT Station

**Gross Area:**  
46.03 ha

### Density (People & Jobs per Hectare) <sup>1</sup>



### Population/Job Split <sup>2</sup>



**York Region**

The Regional Municipality of York  
Corporate Services,  
Planning and Economic Development  
March 2019

Data © Queen's Printer for  
Ontario 2003-2019  
See York.ca for disclaimer information.

<sup>1</sup> Values are rounded to the nearest 5 People & Jobs per Hectare

<sup>2</sup> Values are rounded to the nearest 5%

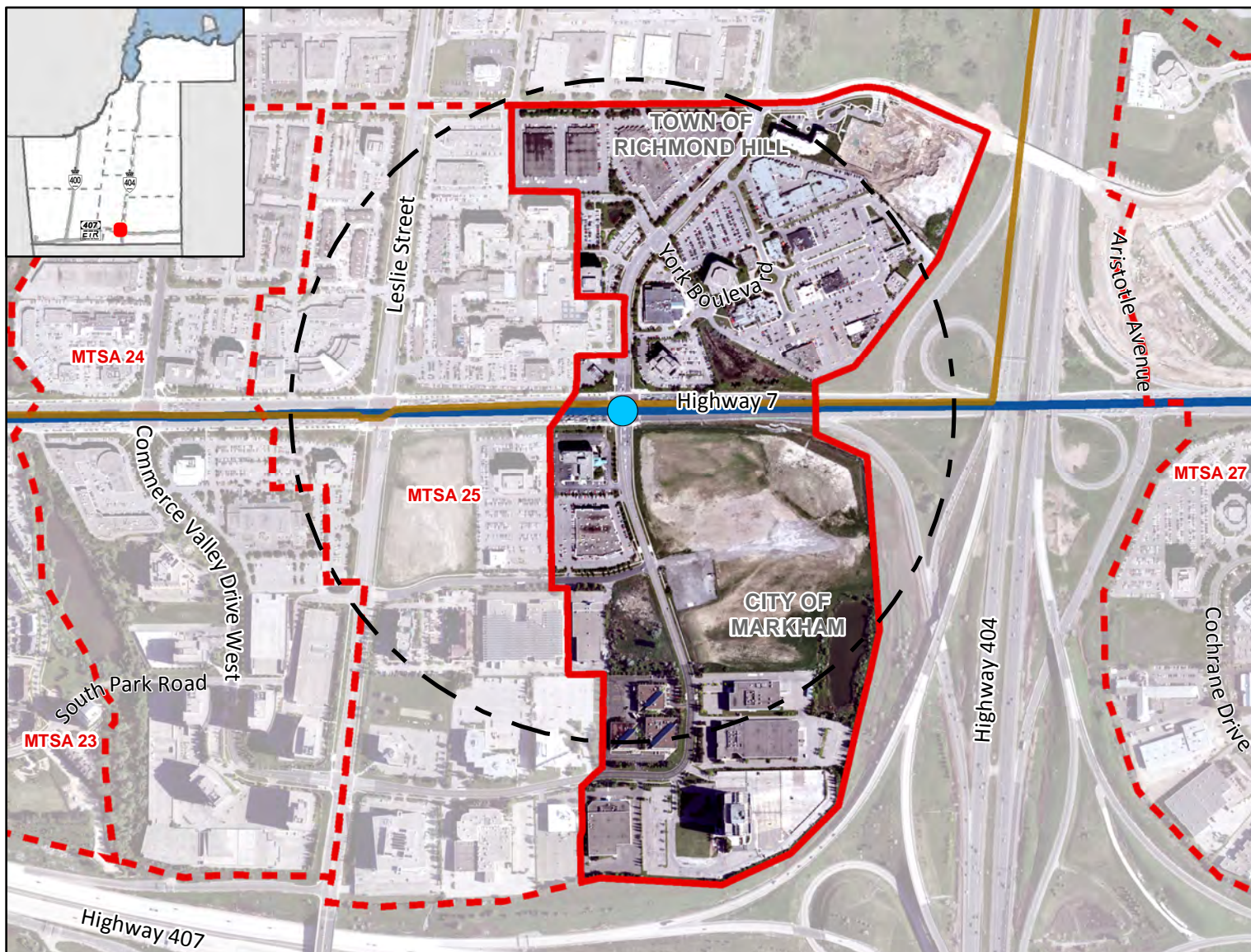


# East Beaver Creek BRT Station

MTSA 26

## On Highway 7 BRT Corridor

Along Highway 7 at East Beaver Creek Rd/Commerce Valley Dr E, Markham/Richmond Hill



### Legend

#### Major Transit Station

- Required BRT
- 500m Radius
- Draft MTSA Boundary
- Adjacent Draft MTSA Boundary

#### Priority Transit Corridors

— BRT

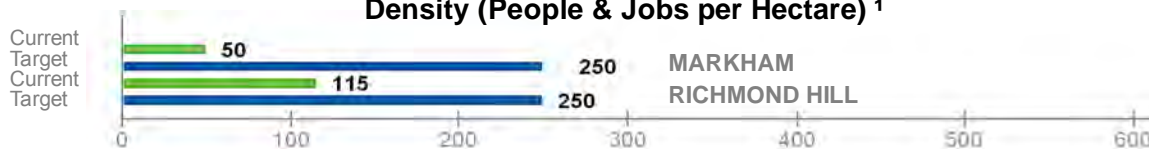
#### Base Map Information

— Local Municipal Boundary

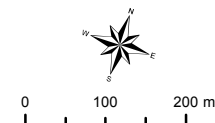
#### East Beaver Creek BRT Station

**Gross Area:**  
54.61 ha

### Density (People & Jobs per Hectare) <sup>1</sup>



### Population/Job Split <sup>2</sup>



**York Region**

The Regional Municipality of York  
Corporate Services,  
Planning and Economic Development  
March 2019

Data © Queen's Printer for  
Ontario 2003-2019  
See York.ca for disclaimer information.

<sup>1</sup> Values are rounded to the nearest 5 People & Jobs per Hectare

<sup>2</sup> Values are rounded to the nearest 5%

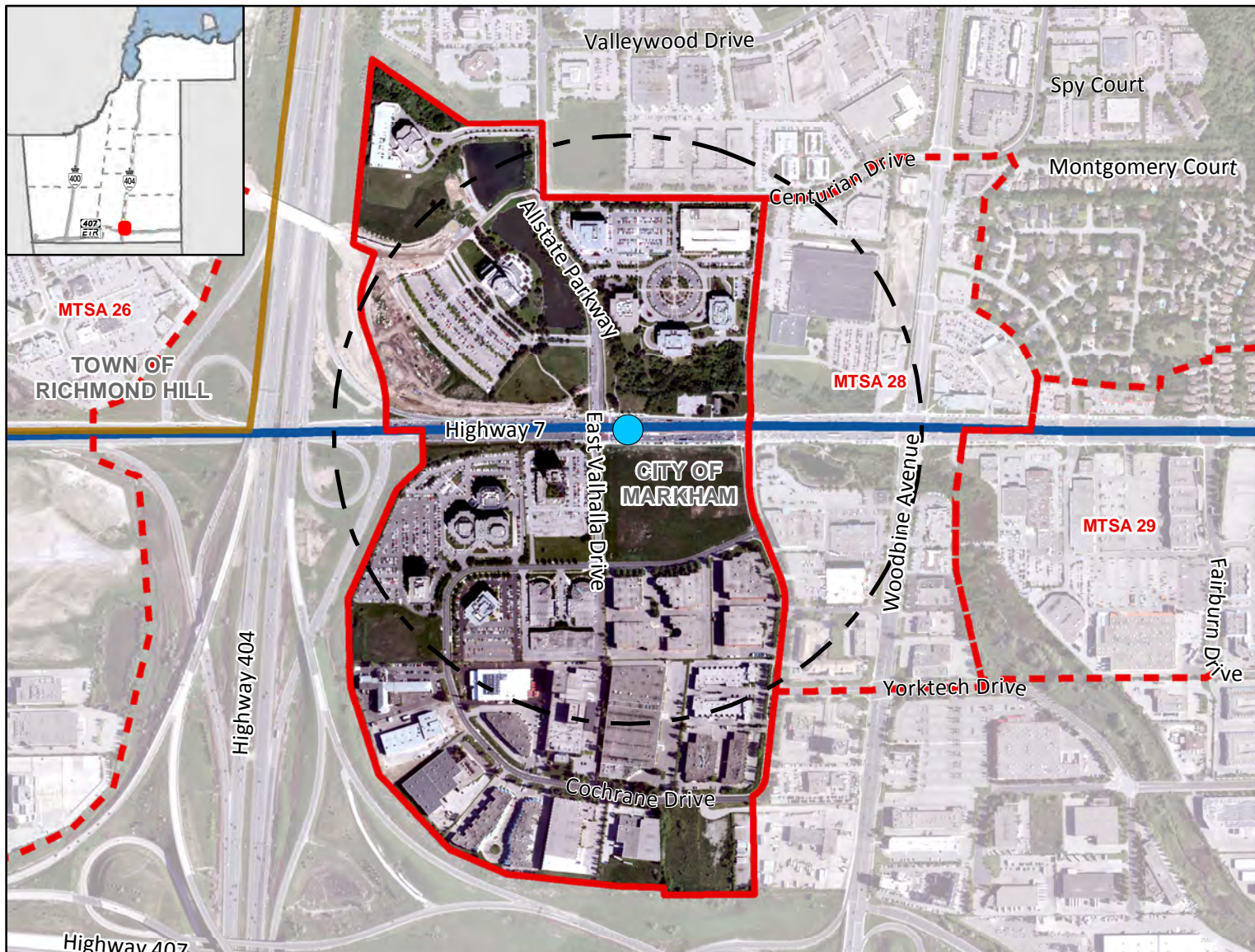


# Allstate Parkway BRT Station

MTSA 27

## On Highway 7 BRT Corridor

Along Highway 7 at Allstate Parkway/East Valhalla Drive, Markham



### Legend

#### Major Transit Station

- Required BRT
- 500m Radius
- Draft MTSA Boundary
- Adjacent Draft MTSA Boundary

#### Priority Transit Corridors

— BRT

#### Base Map Information

— Local Municipal Boundary

#### Allstate Parkway

#### BRT Station

Gross Area:

80.42 ha

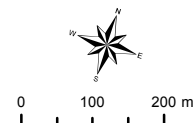
### Density (People & Jobs per Hectare) <sup>1</sup>



### Population/Job Split <sup>2</sup>



■ People  
■ Jobs



**York Region**

The Regional Municipality of York  
Corporate Services,  
Planning and Economic Development  
March 2019

Data © Queen's Printer for  
Ontario 2003-2019  
See York.ca for disclaimer information.

<sup>1</sup> Values are rounded to the nearest 5 People & Jobs per Hectare

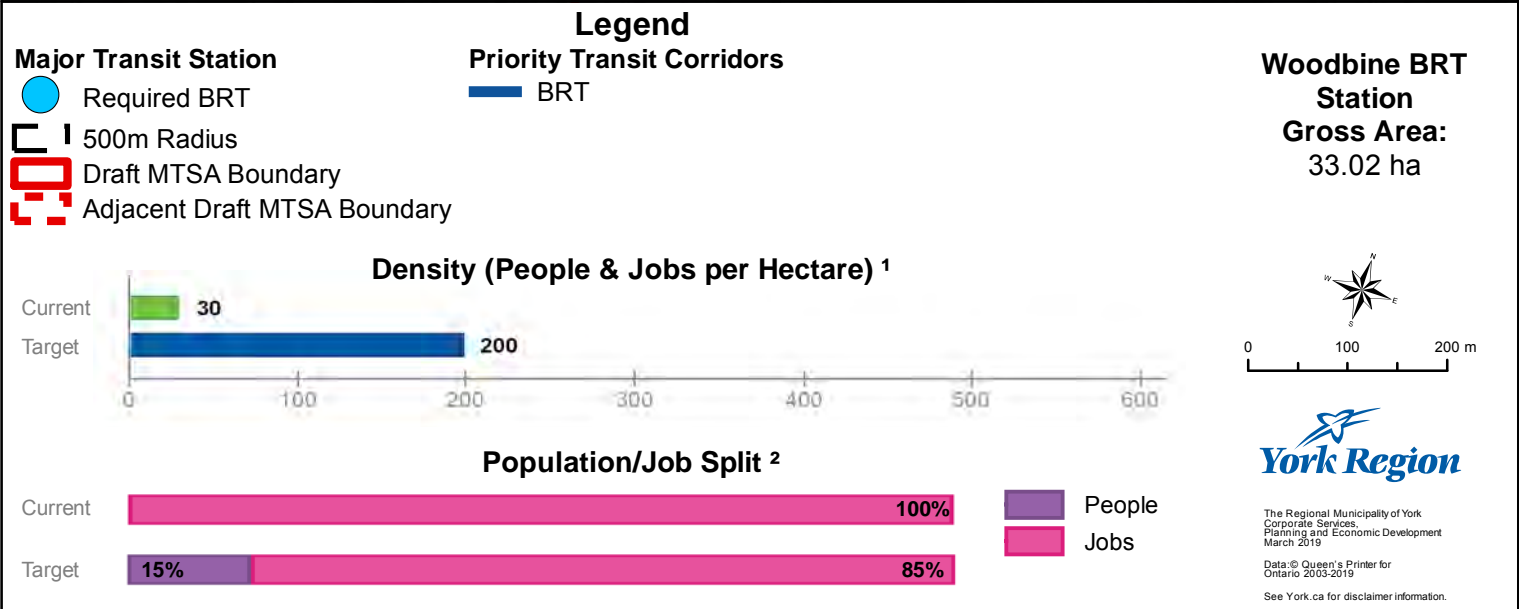
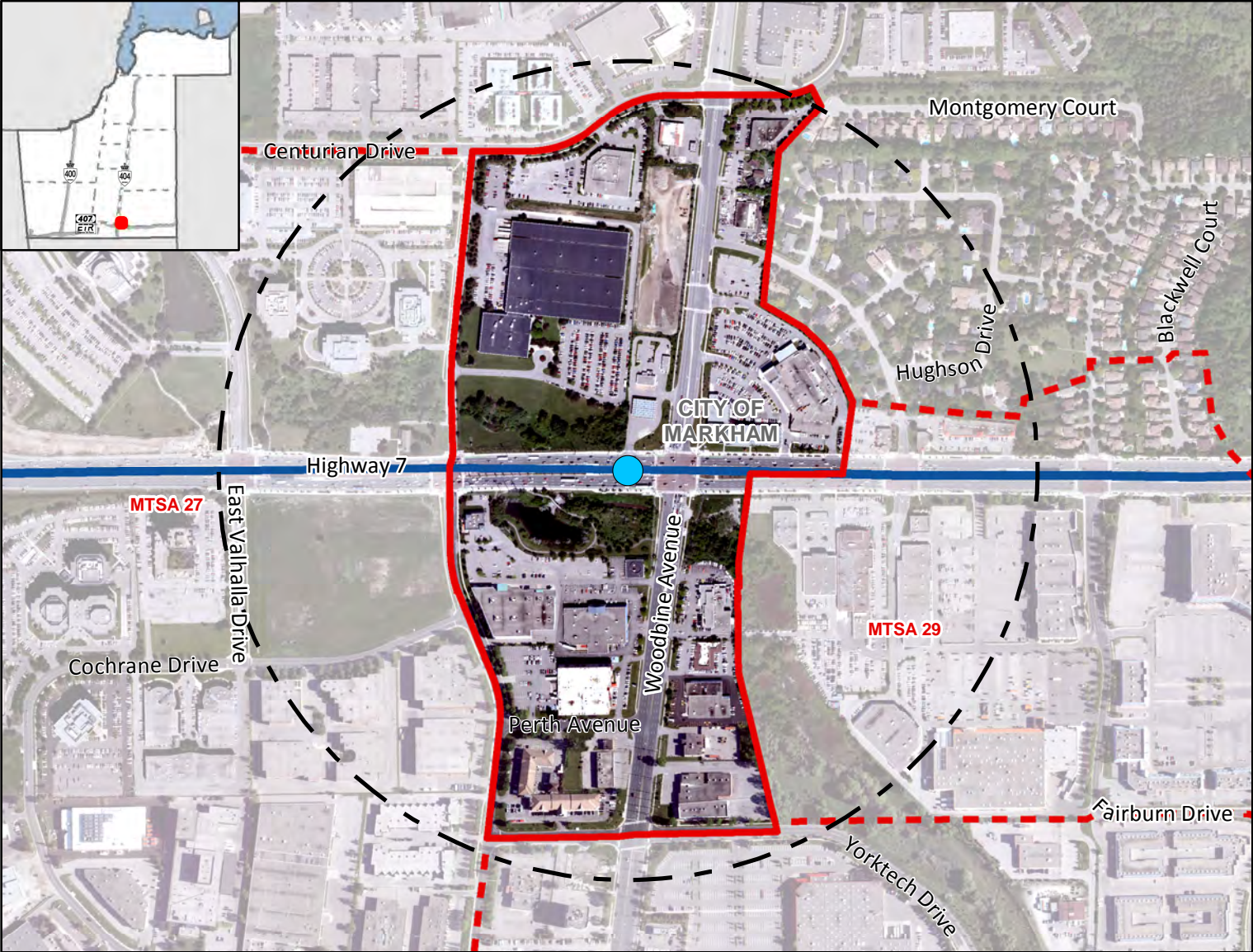
<sup>2</sup> Values are rounded to the nearest 5%



# Woodbine BRT Station

## On Highway 7 BRT Corridor

### Along Highway 7 at Woodbine Avenue, Markham



<sup>1</sup> Values are rounded to the nearest 5 People & Jobs per Hectare

<sup>2</sup> Values are rounded to the nearest 5%

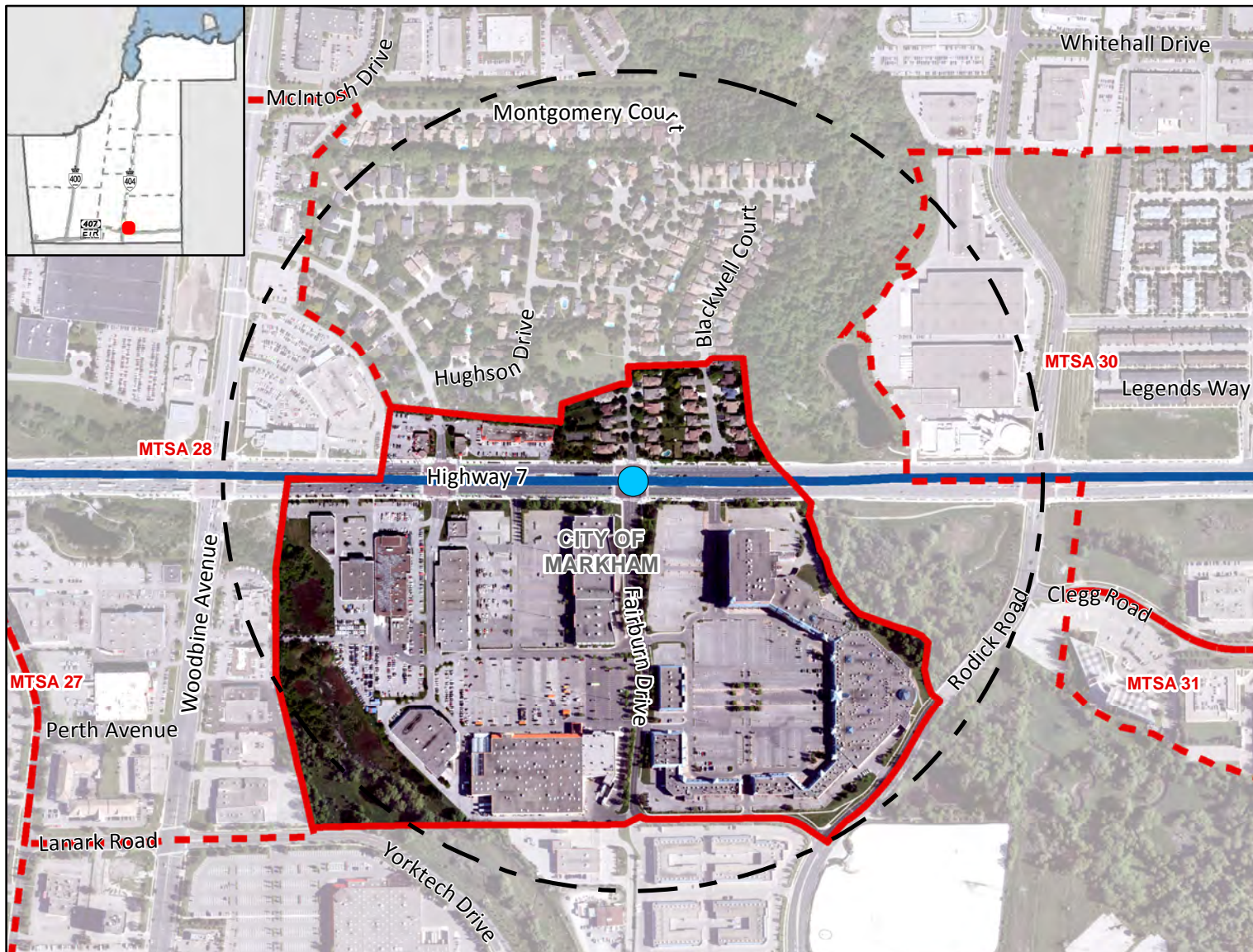


# Montgomery BRT Station

MTSA 29

## On Highway 7 BRT Corridor

Along Highway 7 at Montgomery Court/Fairburn Drive, Markham



### Legend

#### Major Transit Station

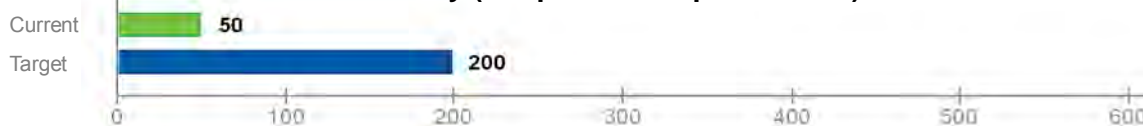
- Required BRT
- 500m Radius
- Draft MTSA Boundary
- Adjacent Draft MTSA Boundary

#### Priority Transit Corridors

— BRT

**Montgomery  
BRT Station  
Gross Area:  
34.89 ha**

### Density (People & Jobs per Hectare) <sup>1</sup>



### Population/Job Split <sup>2</sup>



**York Region**

The Regional Municipality of York  
Corporate Services,  
Planning and Economic Development  
March 2019

Data © Queen's Printer for  
Ontario 2003-2019  
See York.ca for disclaimer information.

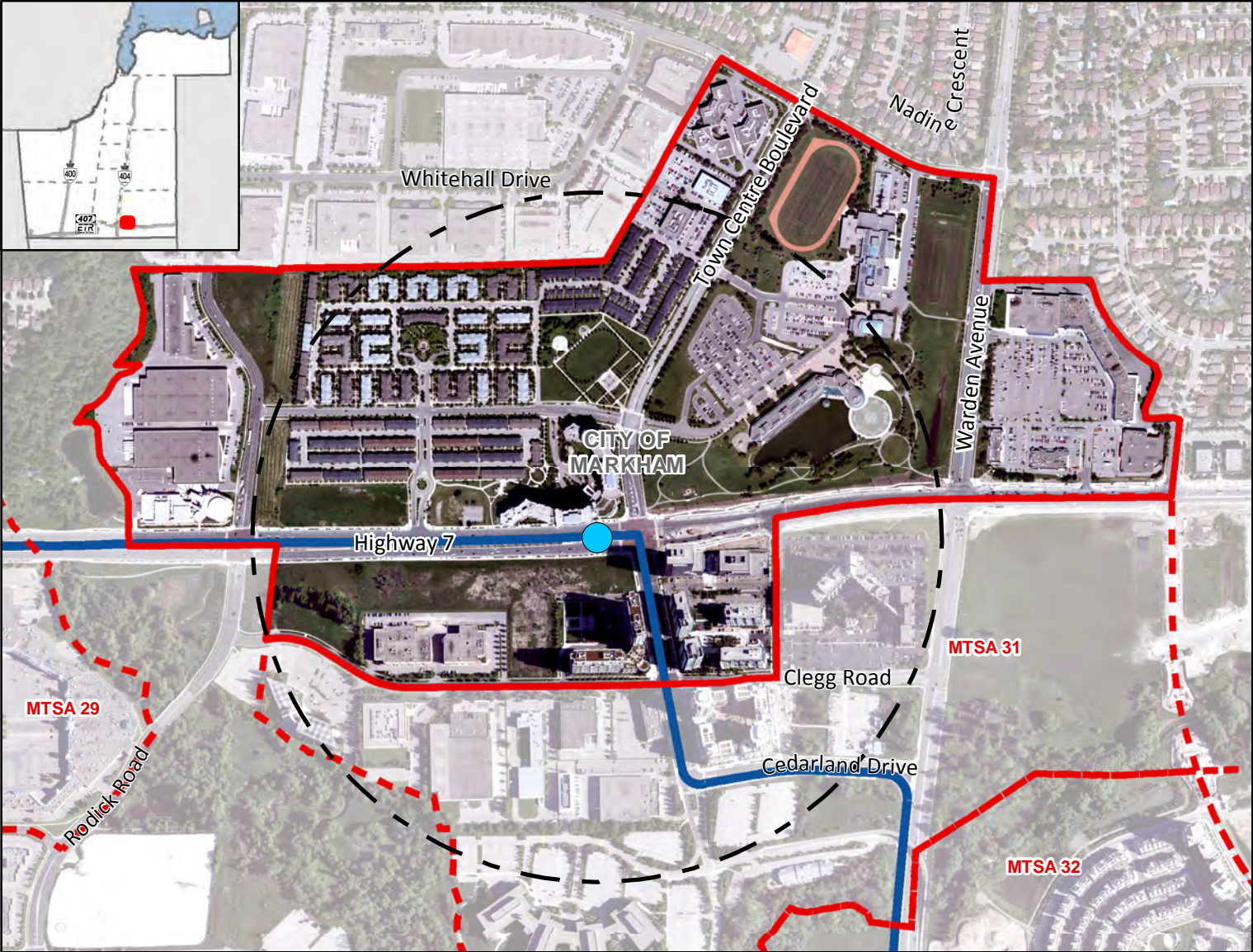
<sup>1</sup> Values are rounded to the nearest 5 People & Jobs per Hectare

<sup>2</sup> Values are rounded to the nearest 5%



# Town Centre Boulevard BRT Station

On Highway 7 BRT Corridor  
Along Highway 7 at Town Centre Boulevard, Markham



### Legend

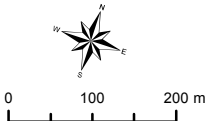
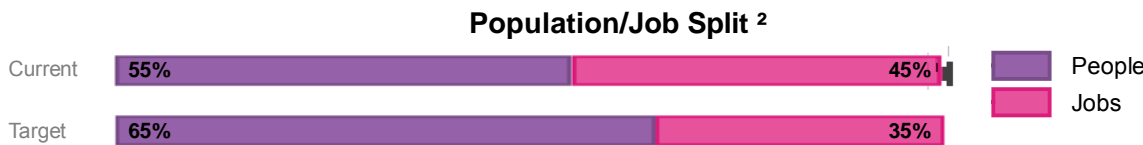
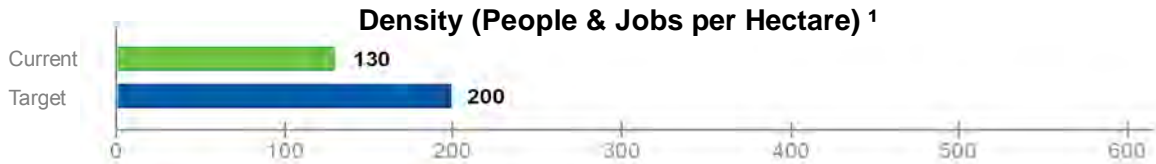
**Major Transit Station**

- Required BRT
- 500m Radius
- Draft MTSA Boundary
- Adjacent Draft MTSA Boundary

**Priority Transit Corridors**

BRT

**Town Centre Boulevard BRT Station**  
**Gross Area:**  
80.75 ha



The Regional Municipality of York  
Corporate Services,  
Planning and Economic Development  
March 2019  
Data © Queen's Printer for  
Ontario 2003-2019  
See York.ca for disclaimer information.

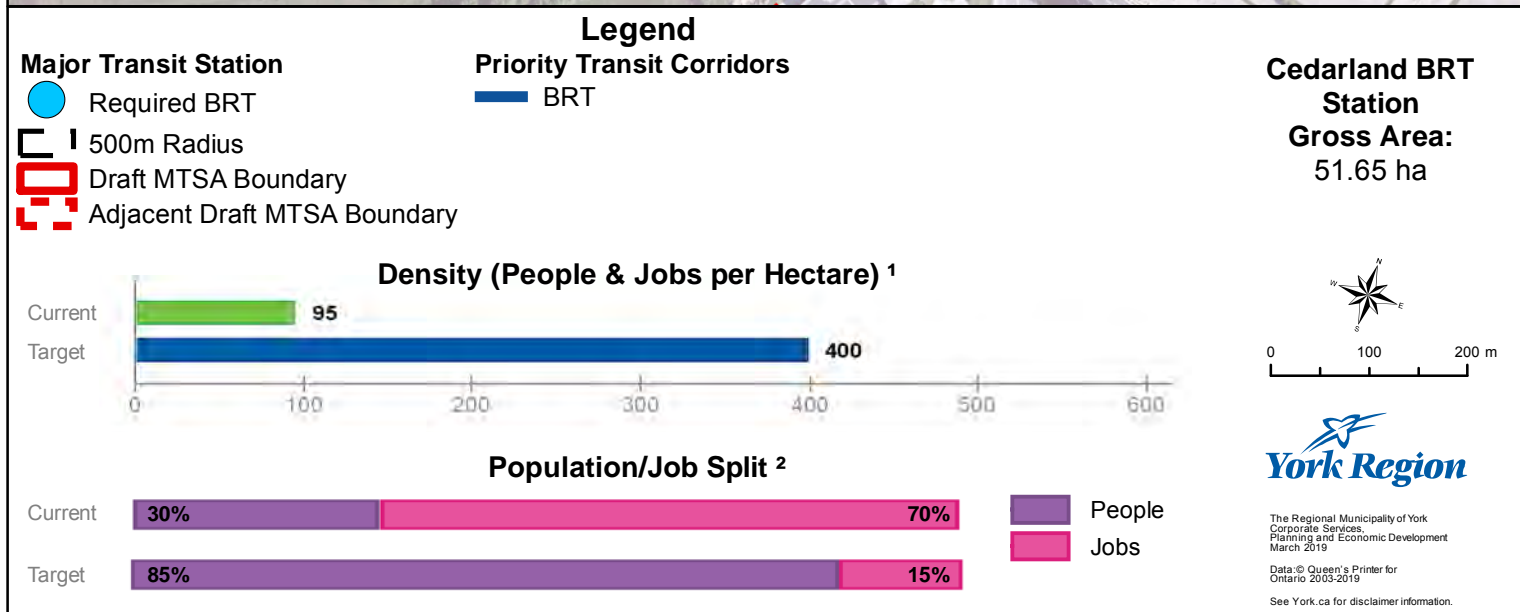
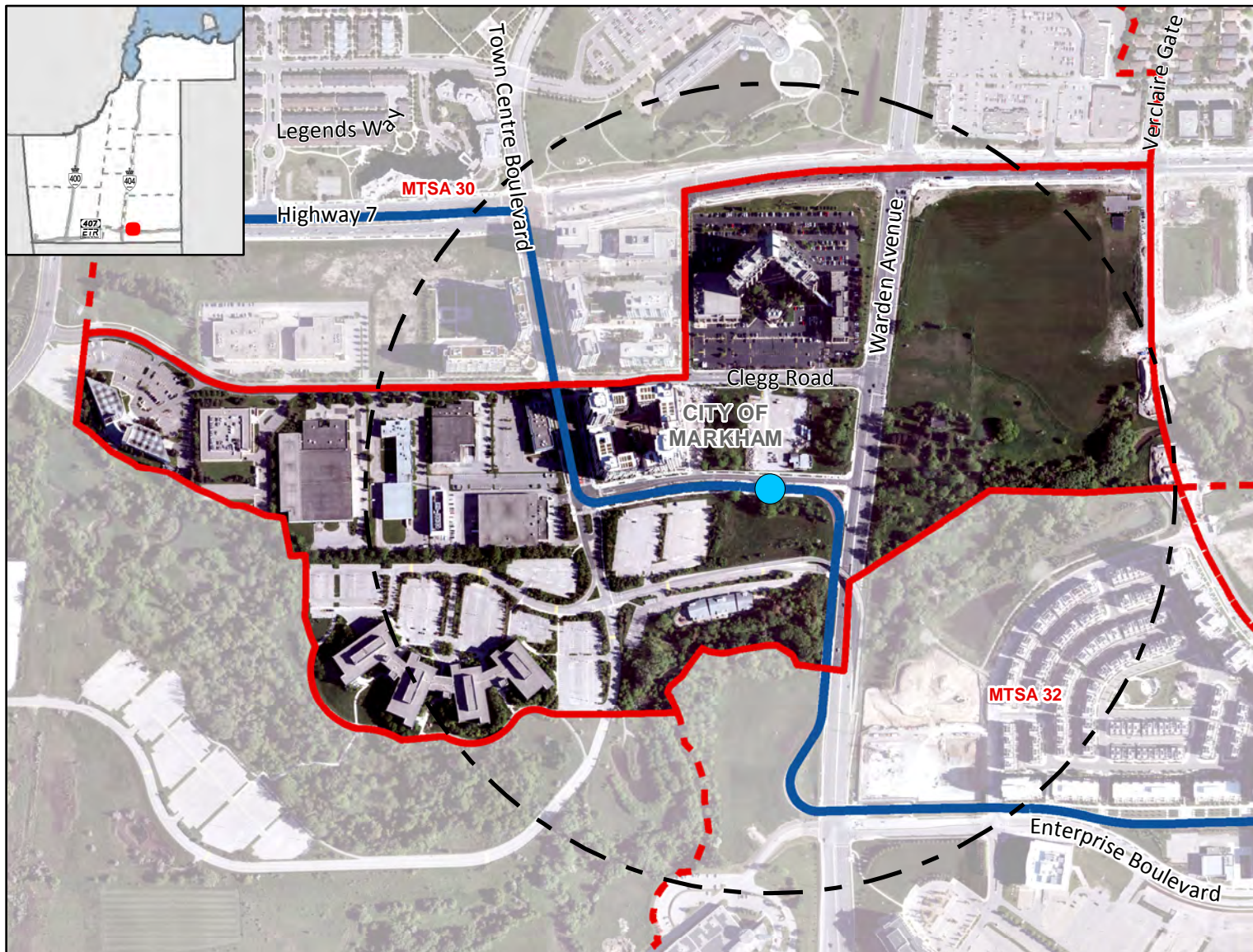
<sup>1</sup> Values are rounded to the nearest 5 People & Jobs per Hectare  
<sup>2</sup> Values are rounded to the nearest 5%



# Cedarland BRT Station

## On Highway 7 BRT Corridor

Along Cedarland Drive at Warden Avenue, Markham



<sup>1</sup> Values are rounded to the nearest 5 People & Jobs per Hectare

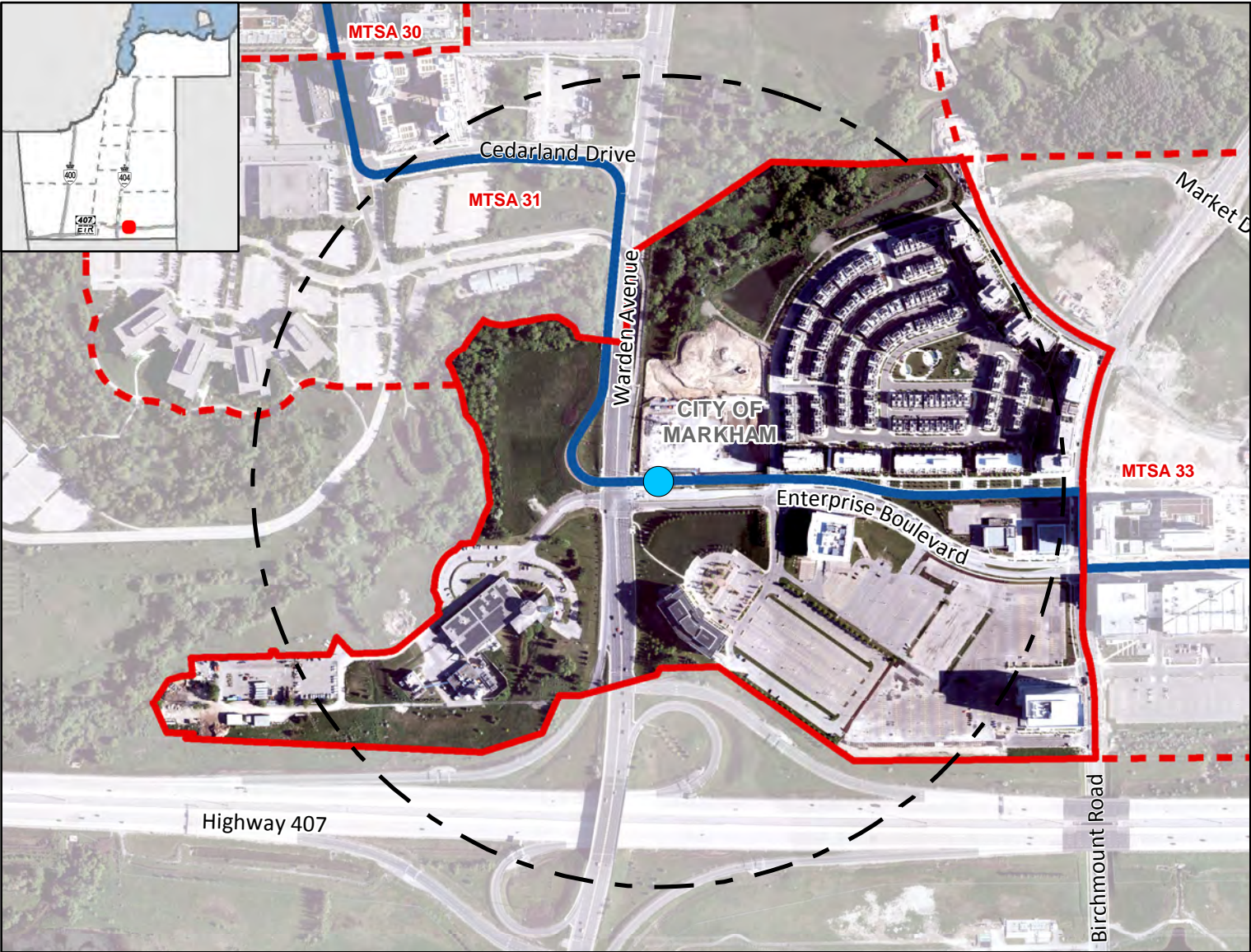
<sup>2</sup> Values are rounded to the nearest 5%



# Warden BRT Station

## On Highway 7 BRT Corridor

Along dedicated BRT road, near Enterprise Boulevard and Warden Avenue, Markham



### Legend

#### Major Transit Station

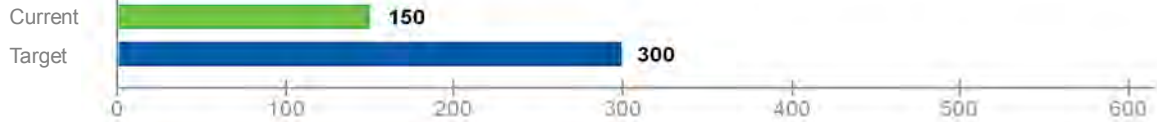
- Required BRT
- 500m Radius
- Draft MTSA Boundary
- Adjacent Draft MTSA Boundary

#### Priority Transit Corridors

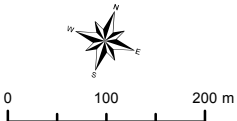
BRT

**Warden BRT Station**  
**Gross Area:**  
50.52 ha

### Density (People & Jobs per Hectare) <sup>1</sup>



### Population/Job Split <sup>2</sup>



The Regional Municipality of York  
Corporate Services,  
Planning and Economic Development  
March 2019  
Data: © Queen's Printer for  
Ontario 2003-2019  
See York.ca for disclaimer information.

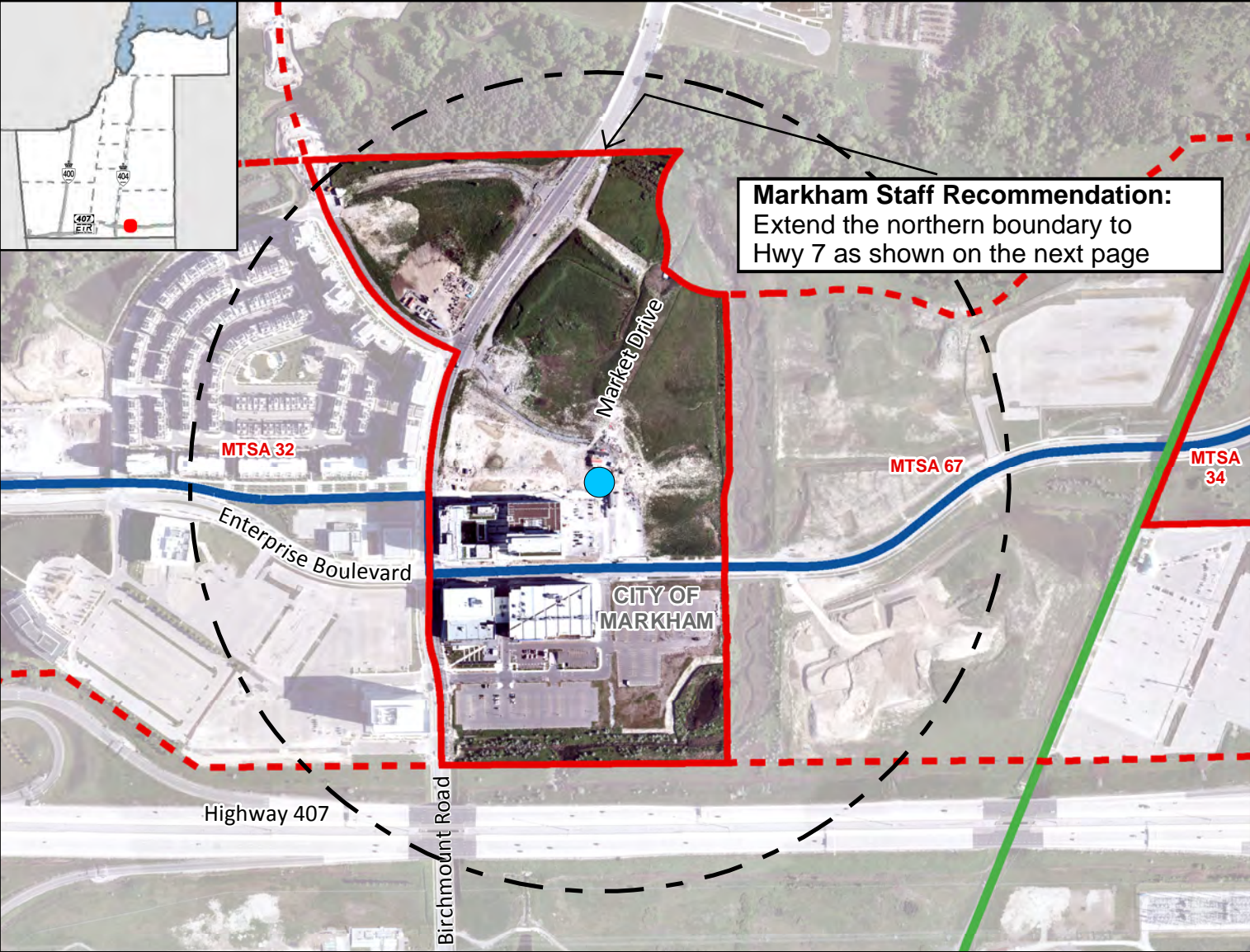
<sup>1</sup> Values are rounded to the nearest 5 People & Jobs per Hectare  
<sup>2</sup> Values are rounded to the nearest 5%



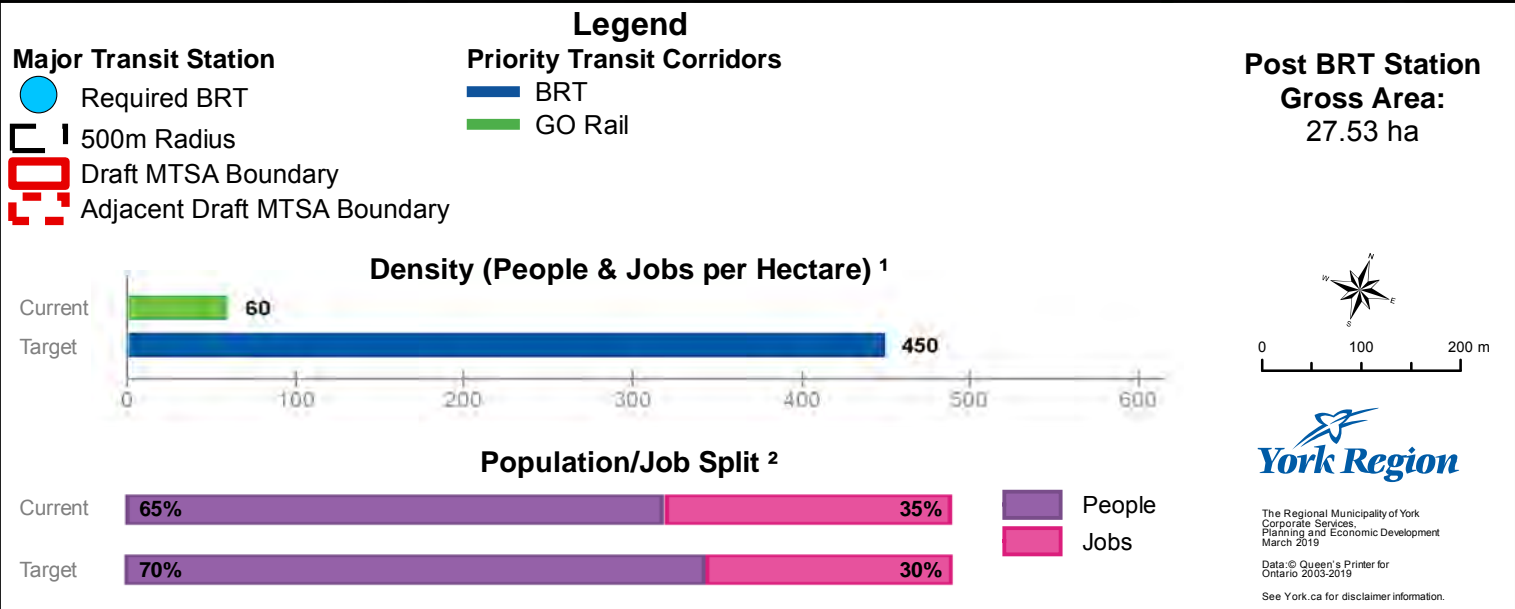
# Post BRT Station

## On Highway 7 BRT Corridor

Along dedicated BRT road, north of Enterprise Boulevard and Post Road, Markham



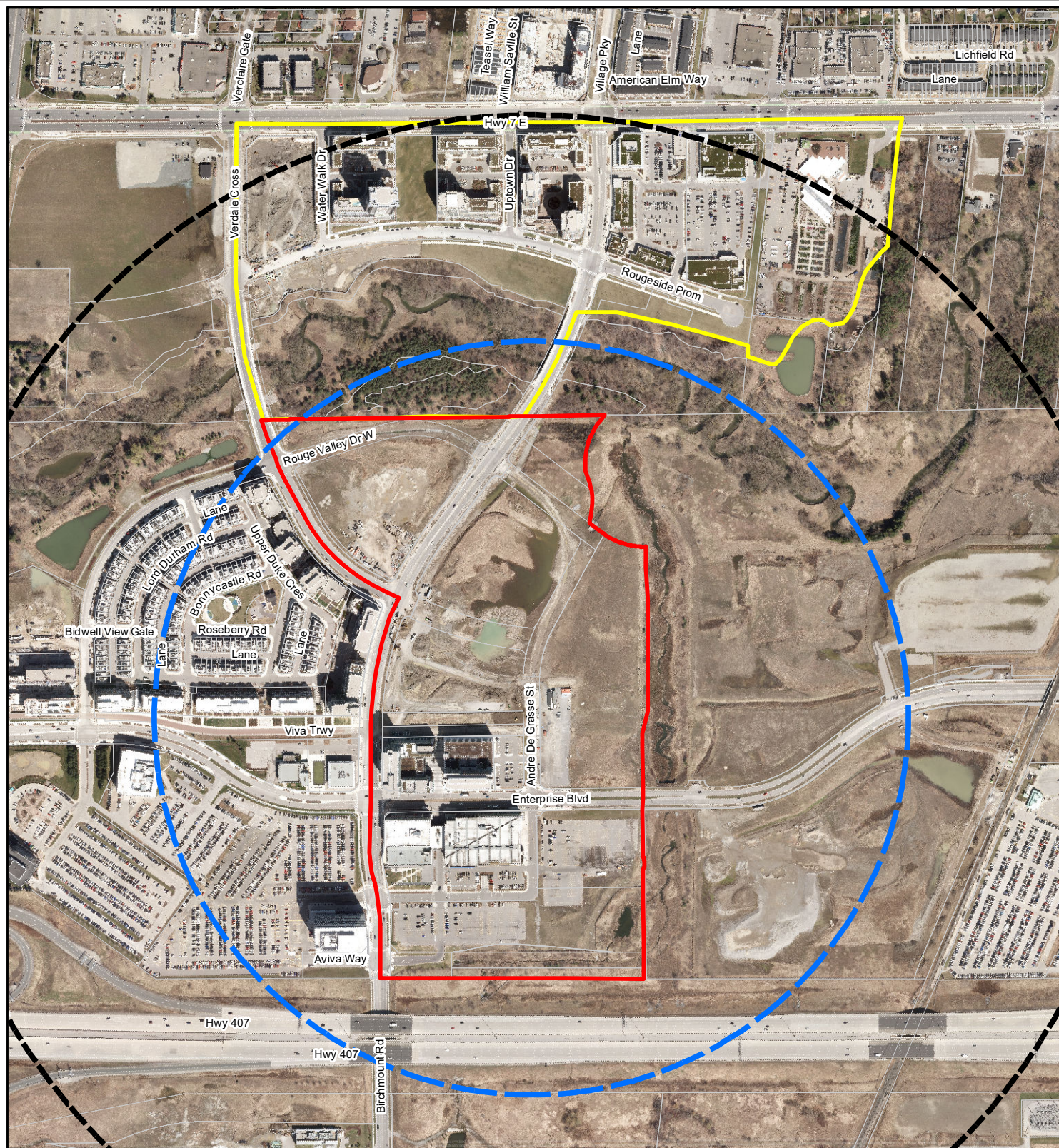
**Markham Staff Recommendation:**  
Extend the northern boundary to Hwy 7 as shown on the next page



<sup>1</sup> Values are rounded to the nearest 5 People & Jobs per Hectare

<sup>2</sup> Values are rounded to the nearest 5%





# Post BRT MTSA

- Required BRT
- MTSA Boundary
- Proposed Addition to MTSA
- 500m Radius
- 800m Radius

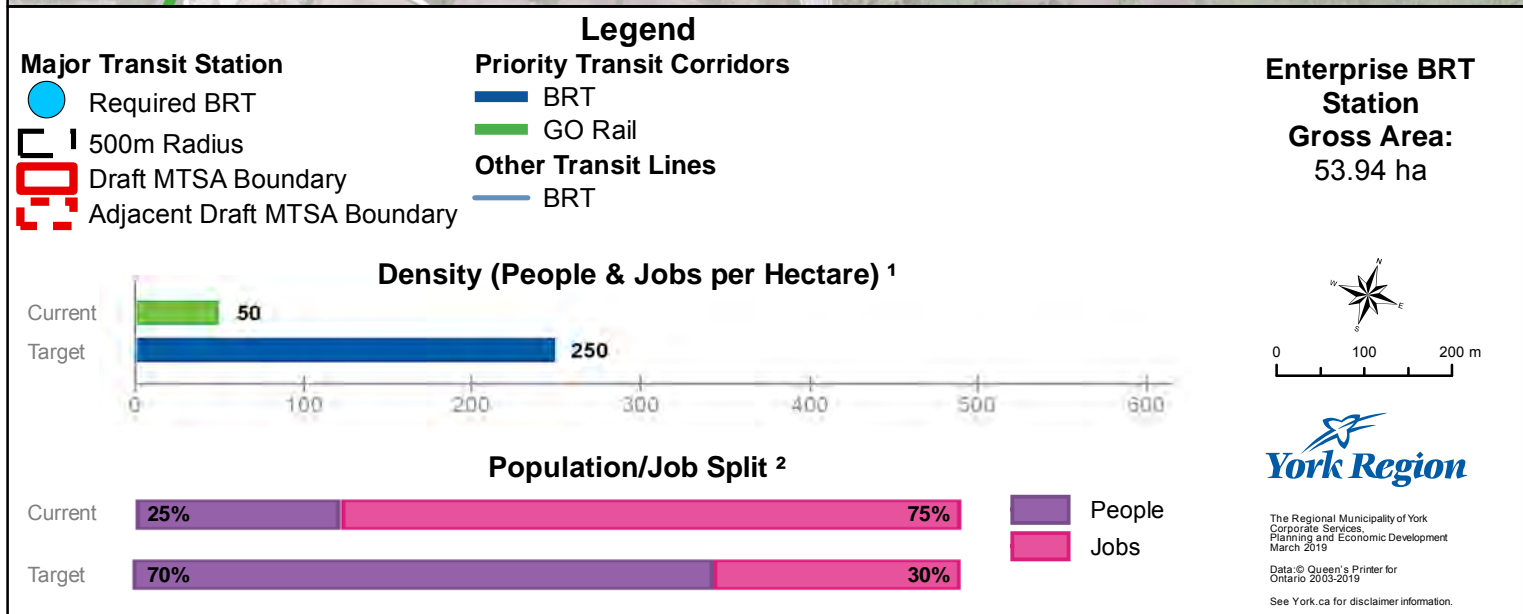
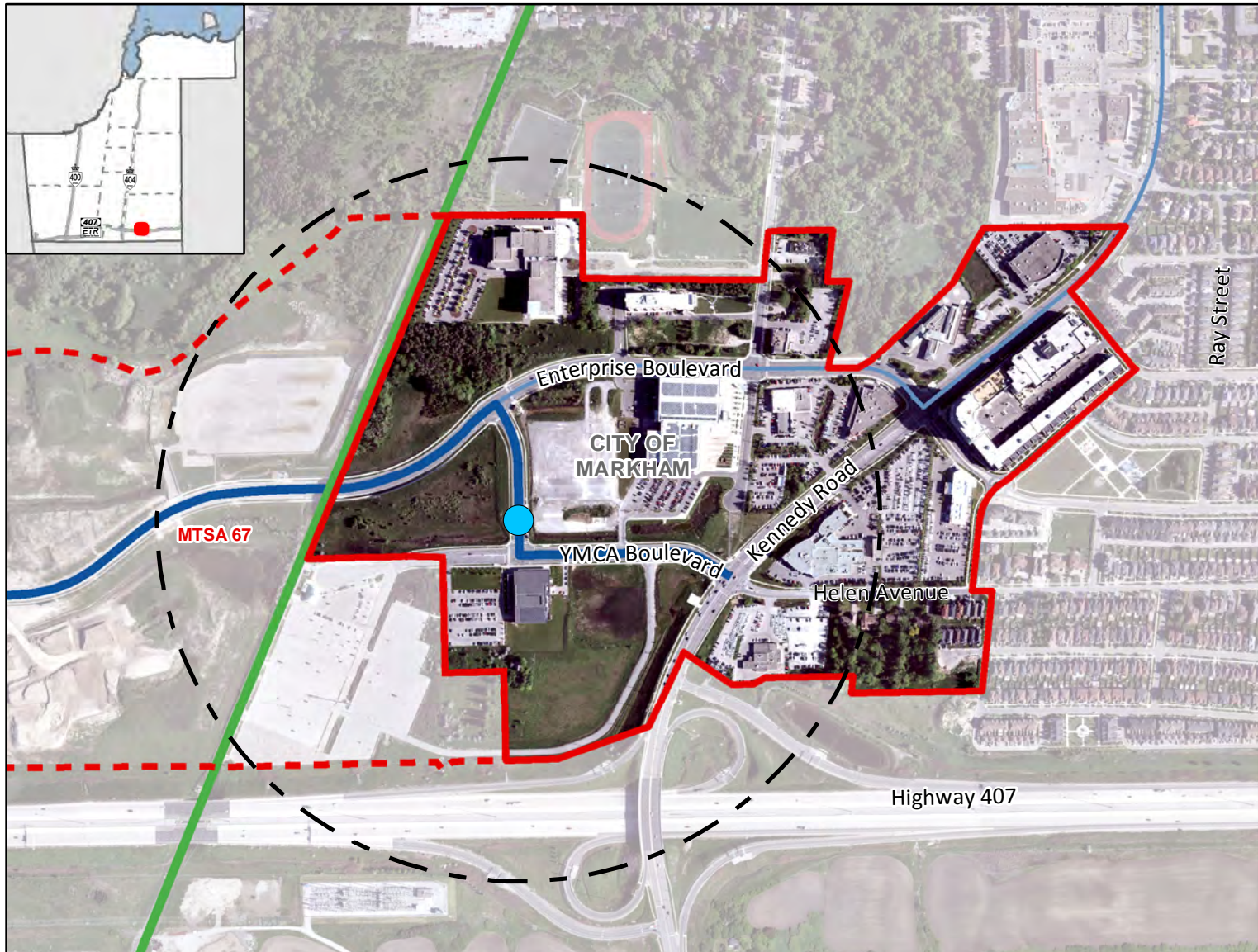




# Enterprise BRT Station

## On Highway 7 BRT Corridor

### Along Ravis Road at YMCA Boulevard, Markham



<sup>1</sup> Values are rounded to the nearest 5 People & Jobs per Hectare

<sup>2</sup> Values are rounded to the nearest 5%

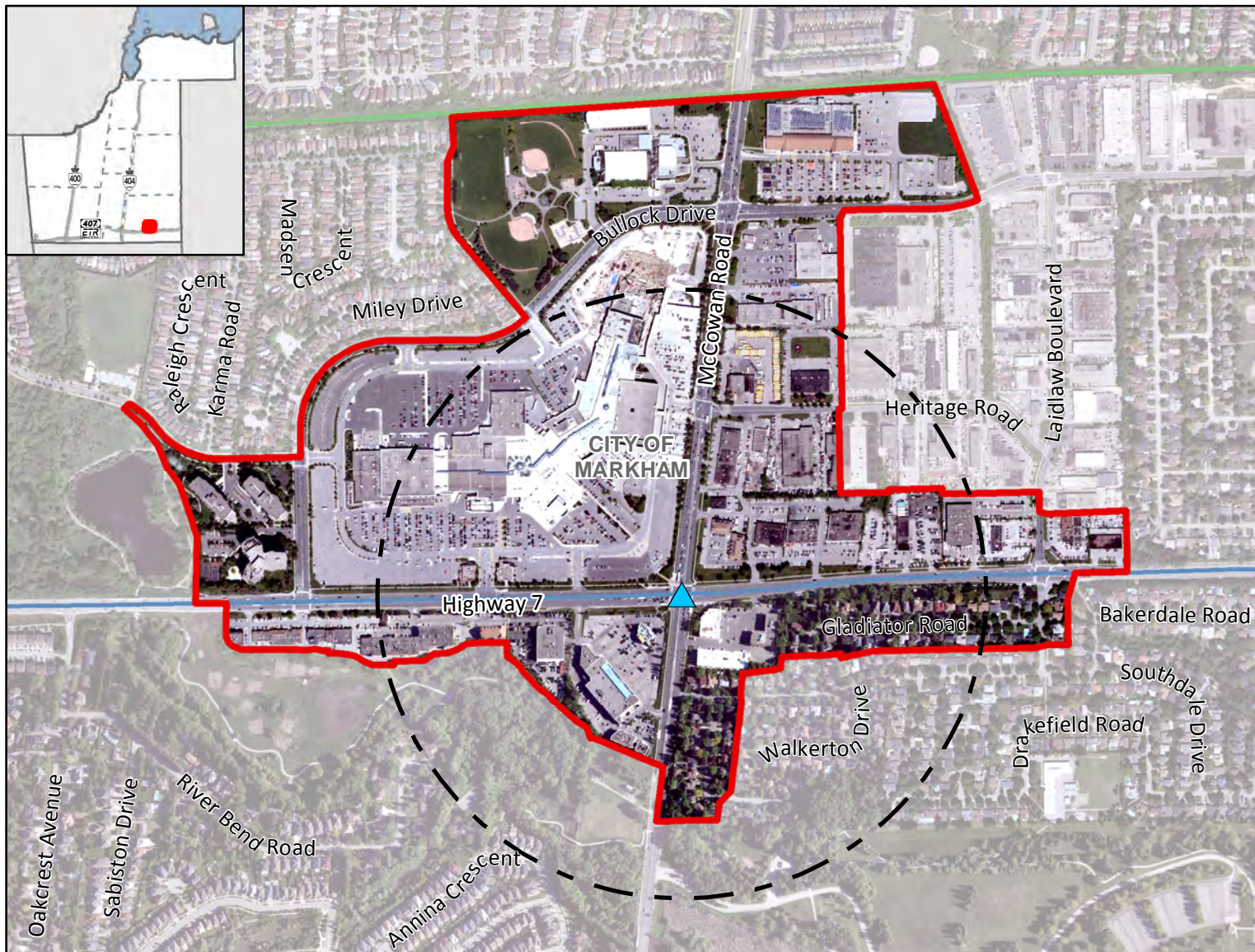


# McCowan BRT Station

MTSA 35

## On Highway 7 BRT Corridor

Along Highway 7 at McCowan Road, Markham



### Legend

- Major Transit Station**
- ▲ Additional BRT
  - 500m Radius
  - ▭ Draft MTSA Boundary

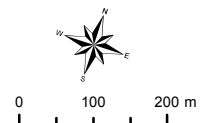
- Other Transit Lines**
- BRT
  - GO Rail

**McCowan BRT Station**  
**Gross Area:**  
 95.09 ha

### Density (People & Jobs per Hectare) <sup>1</sup>



### Population/Job Split <sup>2</sup>



**York Region**

The Regional Municipality of York  
 Corporate Services,  
 Planning and Economic Development  
 March 2019  
 Data: © Queen's Printer for  
 Ontario 2003-2019  
 See York.ca for disclaimer information.

<sup>1</sup> Values are rounded to the nearest 5 People & Jobs per Hectare

<sup>2</sup> Values are rounded to the nearest 5%



# Cornell BRT Station

## On Highway 7 BRT Corridor

Along Highway 7 at Bur Oak Avenue, Markham



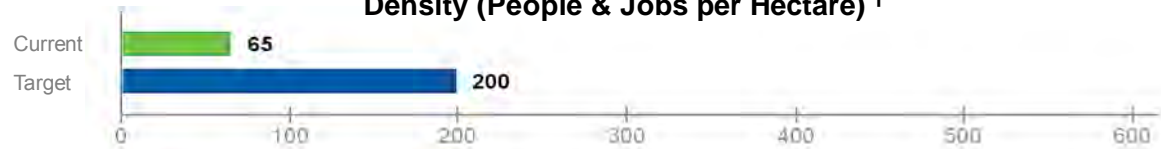
### Legend

- Major Transit Station
- Additional BRT
- 500m Radius
- Draft MTSA Boundary

- Other Transit Lines
- BRT

**Cornell BRT Station**  
**Gross Area:**  
100.45 ha

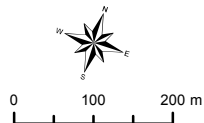
### Density (People & Jobs per Hectare) <sup>1</sup>



### Population/Job Split <sup>2</sup>



- People
- Jobs



**York Region**

The Regional Municipality of York  
Corporate Services,  
Planning and Economic Development  
March 2019  
Data © Queen's Printer for  
Ontario 2003-2019  
See York.ca for disclaimer information.

<sup>1</sup> Values are rounded to the nearest 5 People & Jobs per Hectare

<sup>2</sup> Values are rounded to the nearest 5%

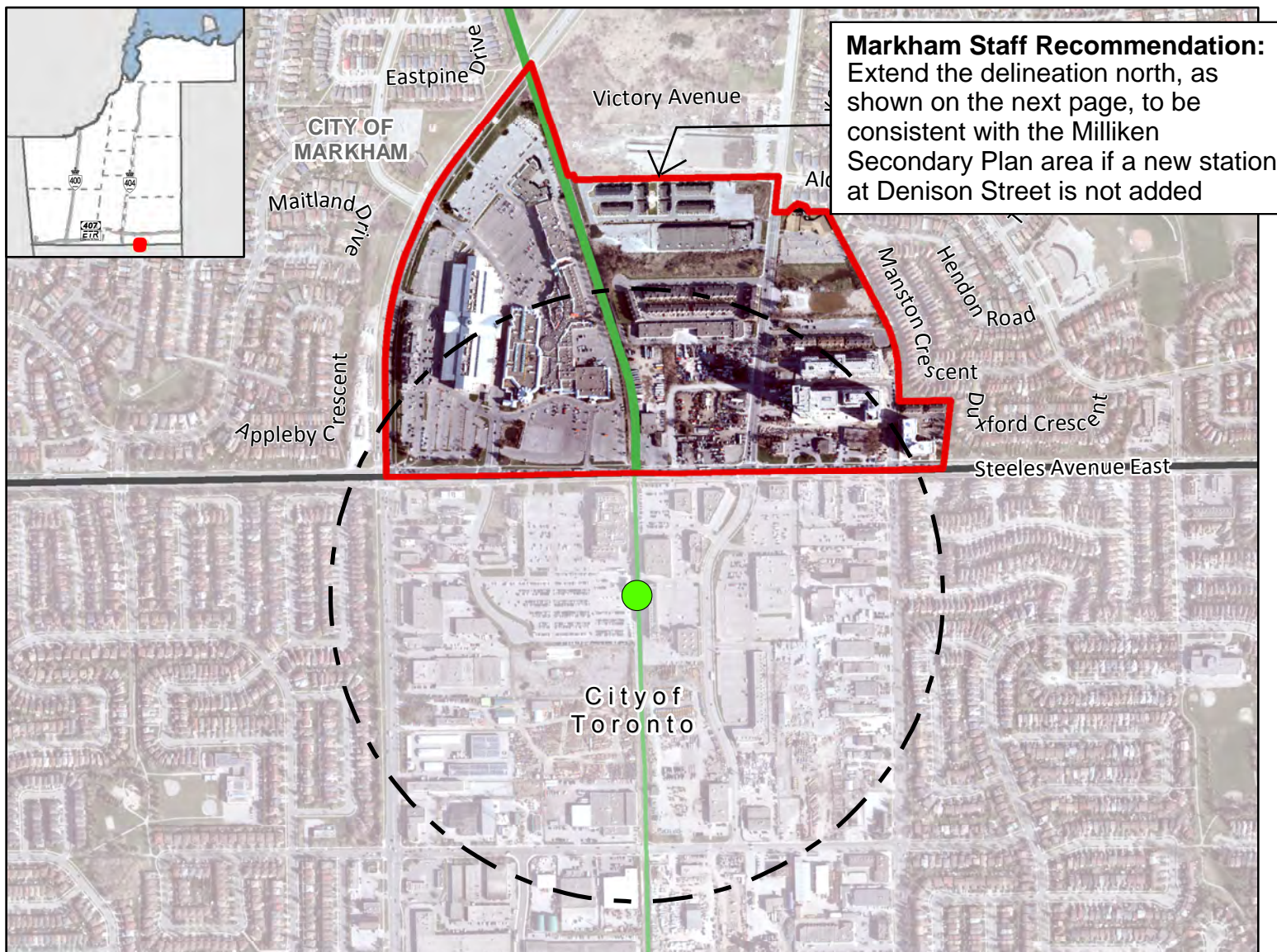


# Milliken GO Station

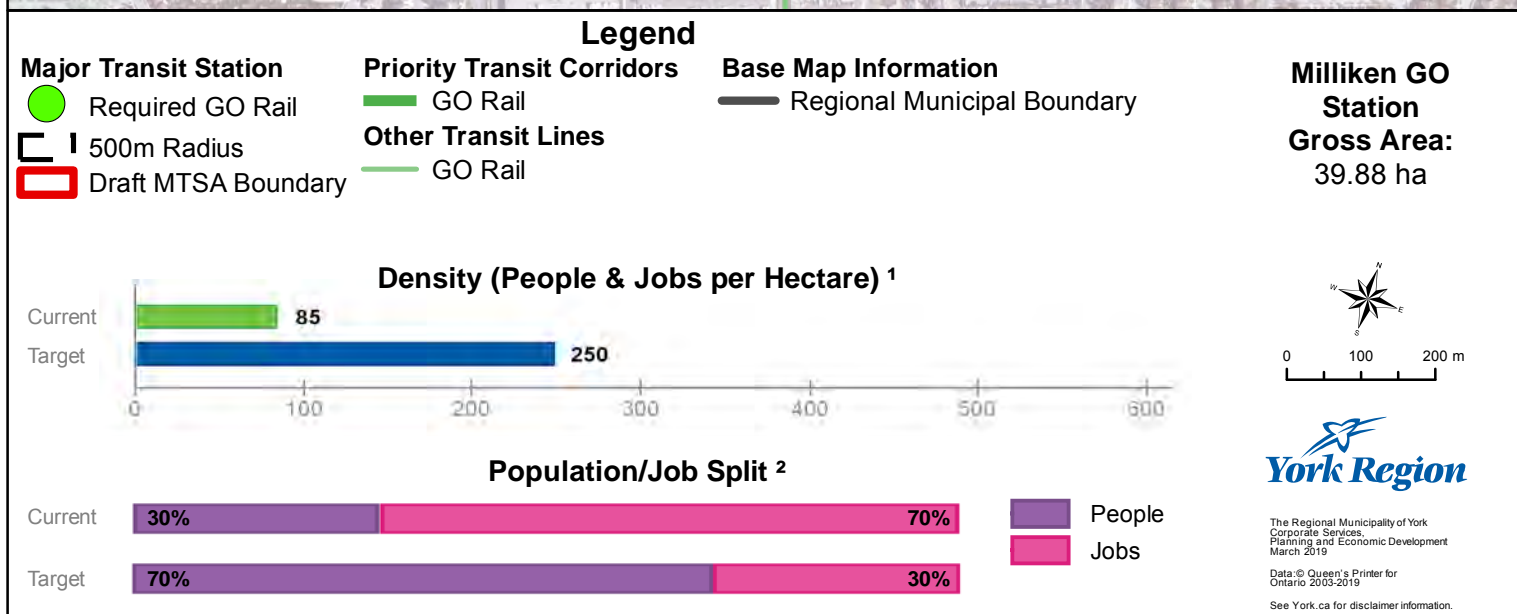
MTSA 65

## On Stouffville GO Line Corridor

Near Steeles Avenue and Kennedy Road, Markham/Toronto



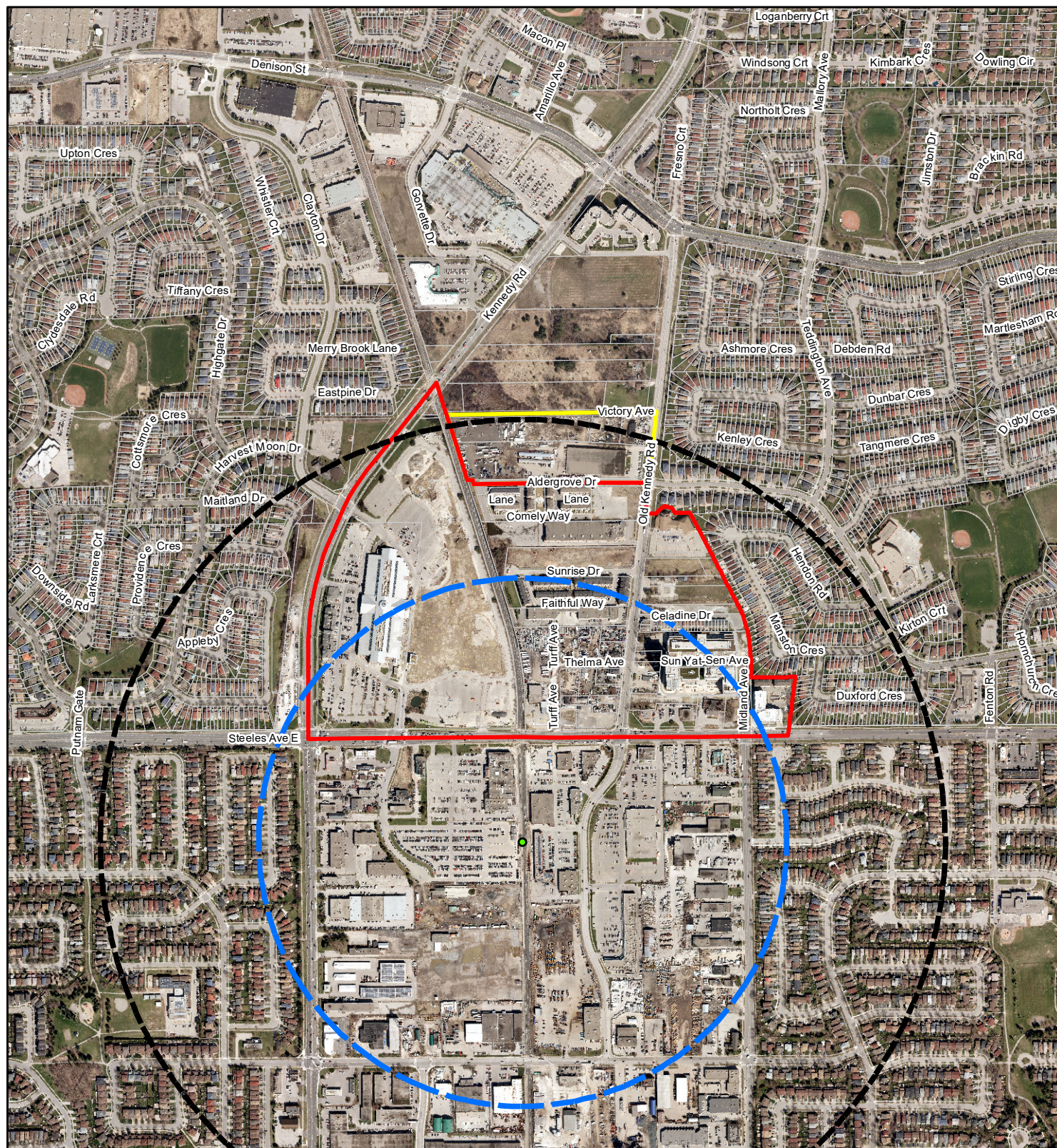
**Markham Staff Recommendation:**  
Extend the delineation north, as shown on the next page, to be consistent with the Milliken Secondary Plan area if a new station at Denison Street is not added



<sup>1</sup> Values are rounded to the nearest 5 People & Jobs per Hectare

<sup>2</sup> Values are rounded to the nearest 5%





# Milliken GO MTSA

- Required GO Rail
- MTSA Boundary
- Proposed Addition to MTSA
- 500m Radius
- 800m Radius



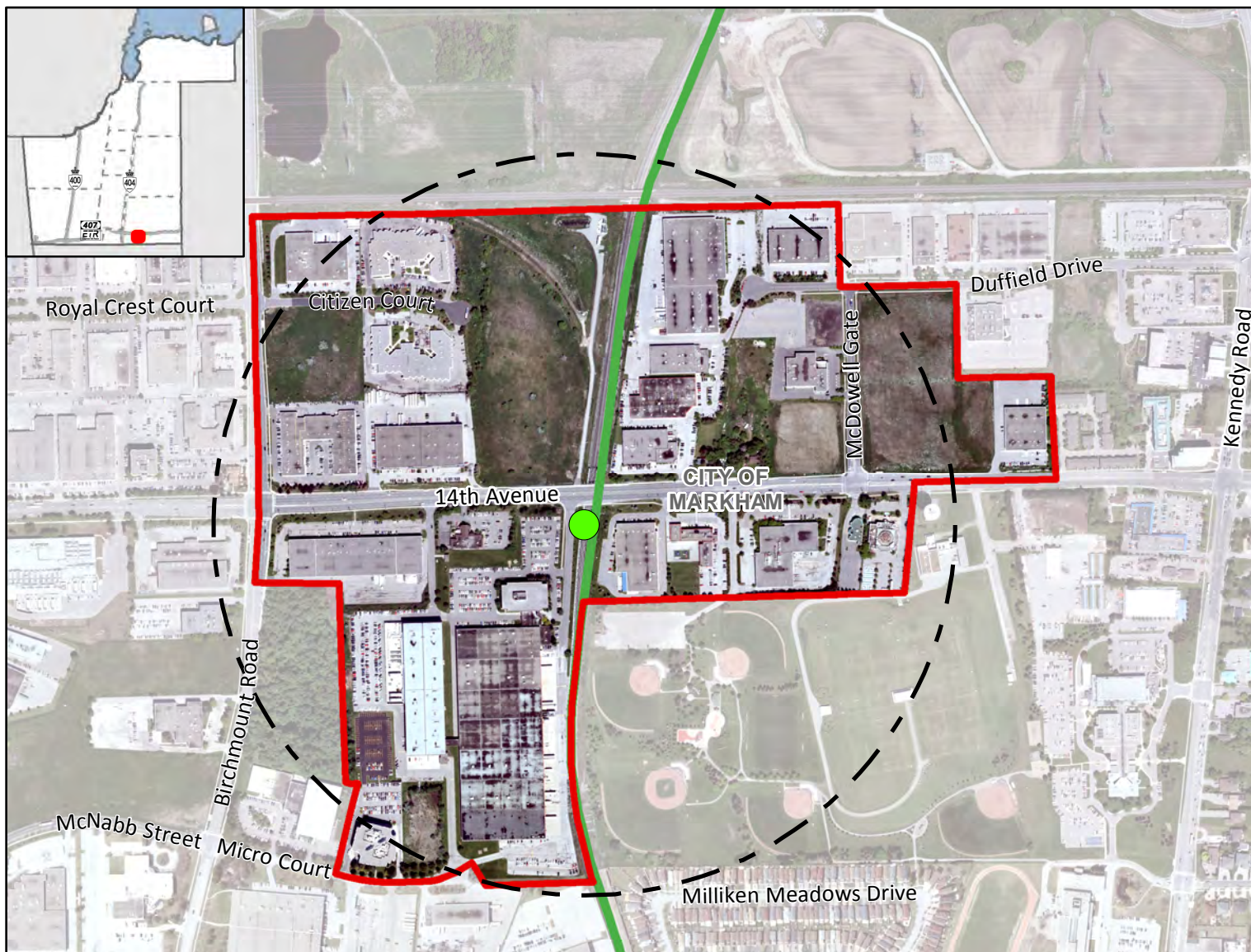


# 14<sup>th</sup> Avenue GO Station

## On Stouffville GO Line Corridor

Near 14 Avenue & Birchmount Road, Markham

MTSA 66



### Legend

- Major Transit Station**
- Required GO Rail
  - 500m Radius
  - ▭ Draft MTSA Boundary

- Priority Transit Corridors**
- GO Rail

**14<sup>th</sup> Avenue GO Station**  
**Gross Area:**  
 60.30 ha

### Density (People & Jobs per Hectare) <sup>1</sup>



### Population/Job Split <sup>2</sup>



**York Region**

The Regional Municipality of York  
 Corporate Services,  
 Planning and Economic Development  
 March 2019

Data © Queen's Printer for  
 Ontario 2003-2019  
 See York.ca for disclaimer information.

<sup>1</sup> Values are rounded to the nearest 5 People & Jobs per Hectare

<sup>2</sup> Values are rounded to the nearest 5%

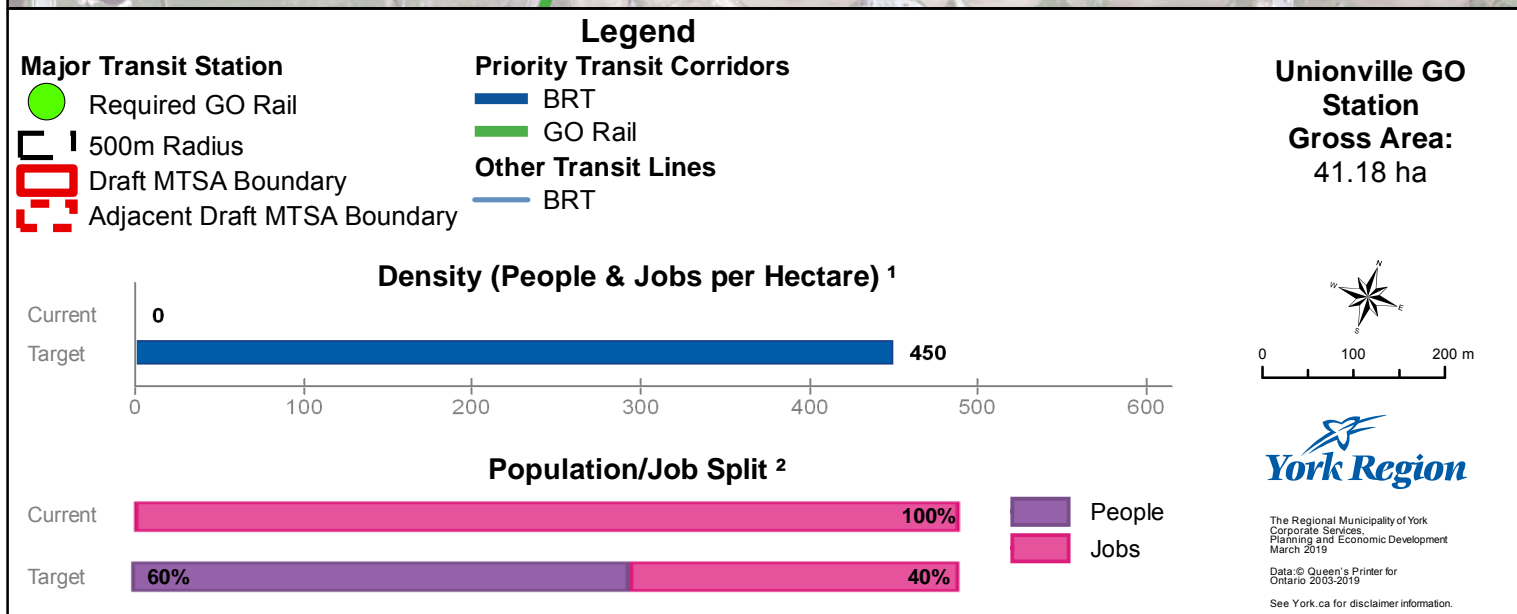
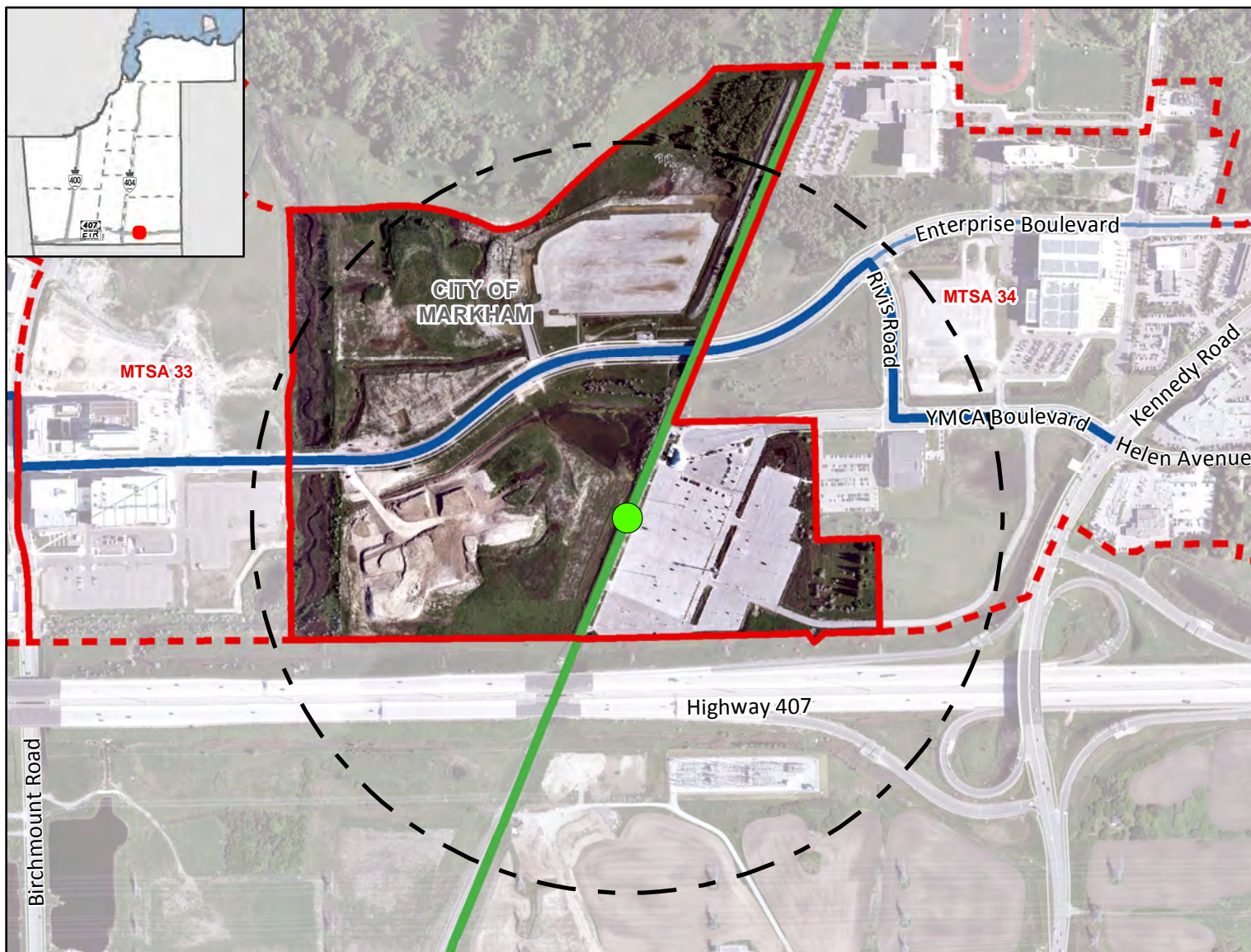


# Unionville GO Station

## On Stouffville GO Line Corridor

Near Enterprise Boulevard at Rivis Road, Markham

MTSA 67



<sup>1</sup> Values are rounded to the nearest 5 People & Jobs per Hectare

<sup>2</sup> Values are rounded to the nearest 5%

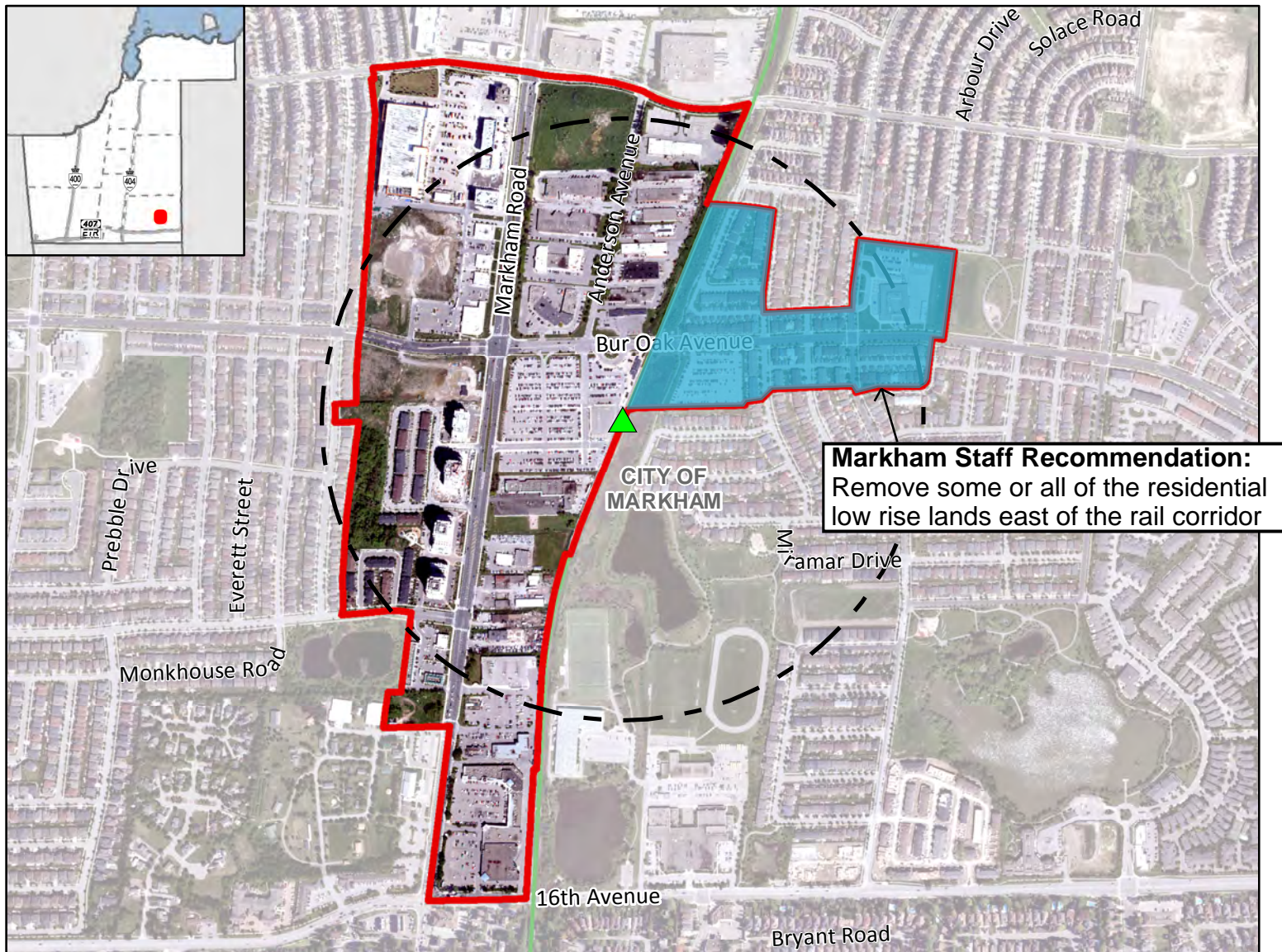


# Mount Joy GO Station

## On Stouffville GO Line Corridor

Near Bur Oak Avenue and Markham Road, Markham

MTSA 68



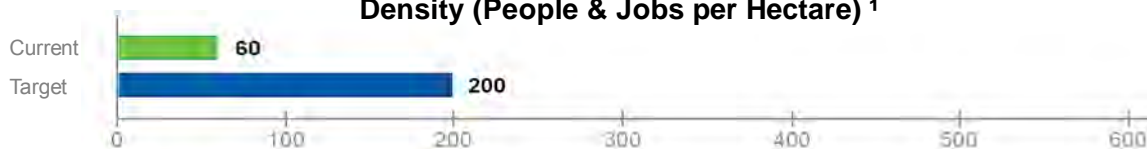
### Legend

- Major Transit Station**
- ▲ Additional GO Rail
  - 500m Radius
  - ▭ Draft MTSA Boundary

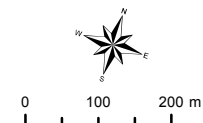
- Other Transit Lines**
- GO Rail

**Mount Joy GO Station**  
Gross Area:  
62.78 ha

### Density (People & Jobs per Hectare) <sup>1</sup>



### Population/Job Split <sup>2</sup>



**York Region**

The Regional Municipality of York  
Corporate Services,  
Planning and Economic Development  
March 2019

Data © Queen's Printer for  
Ontario 2003-2019  
See York.ca for disclaimer information.

<sup>1</sup> Values are rounded to the nearest 5 People & Jobs per Hectare

<sup>2</sup> Values are rounded to the nearest 5%