

A New Vision for Markham Centre

John Gladki, FCIP RPP

Development Services Committee: October 26, 2020

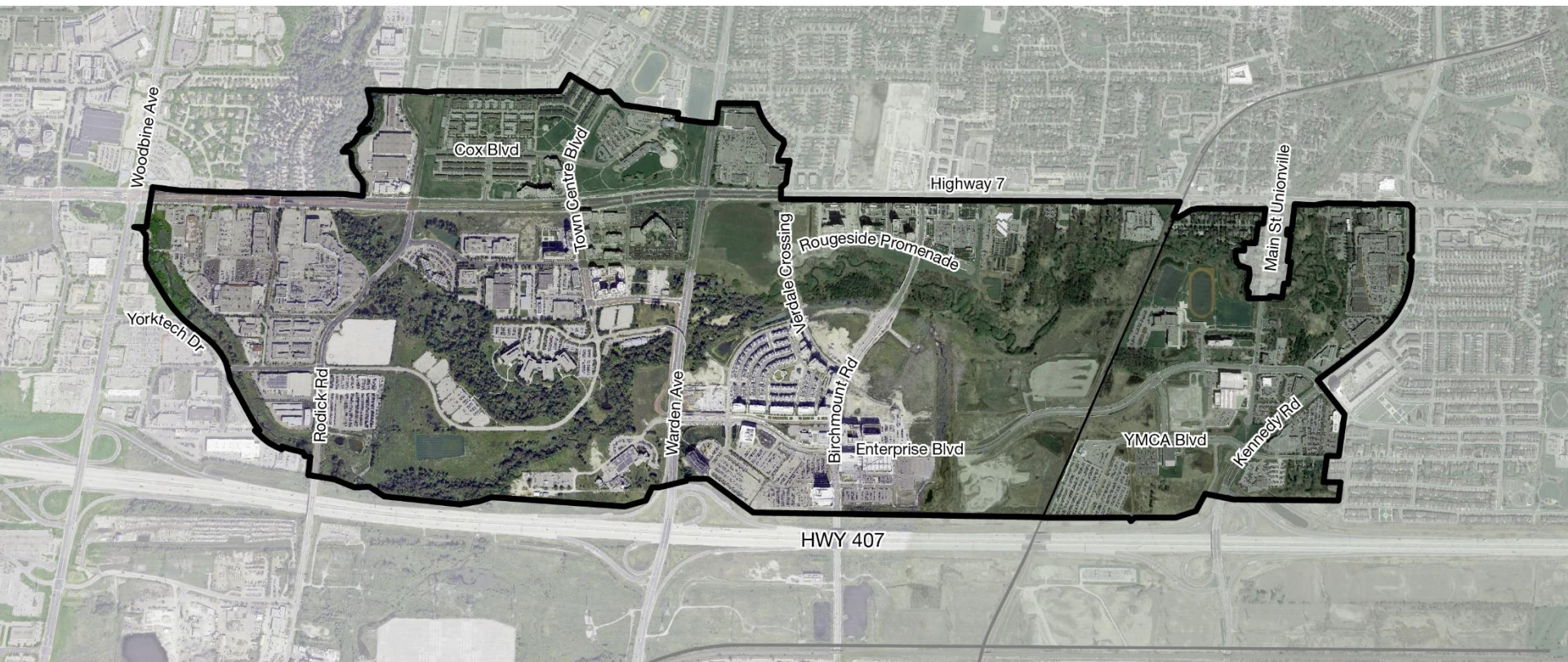




- **Markham Centre Evolution**
- **Our Process**
- **What We Heard**
- **Opportunities and Challenges**
- **Vision and Guiding Principles**
- **Next Steps**

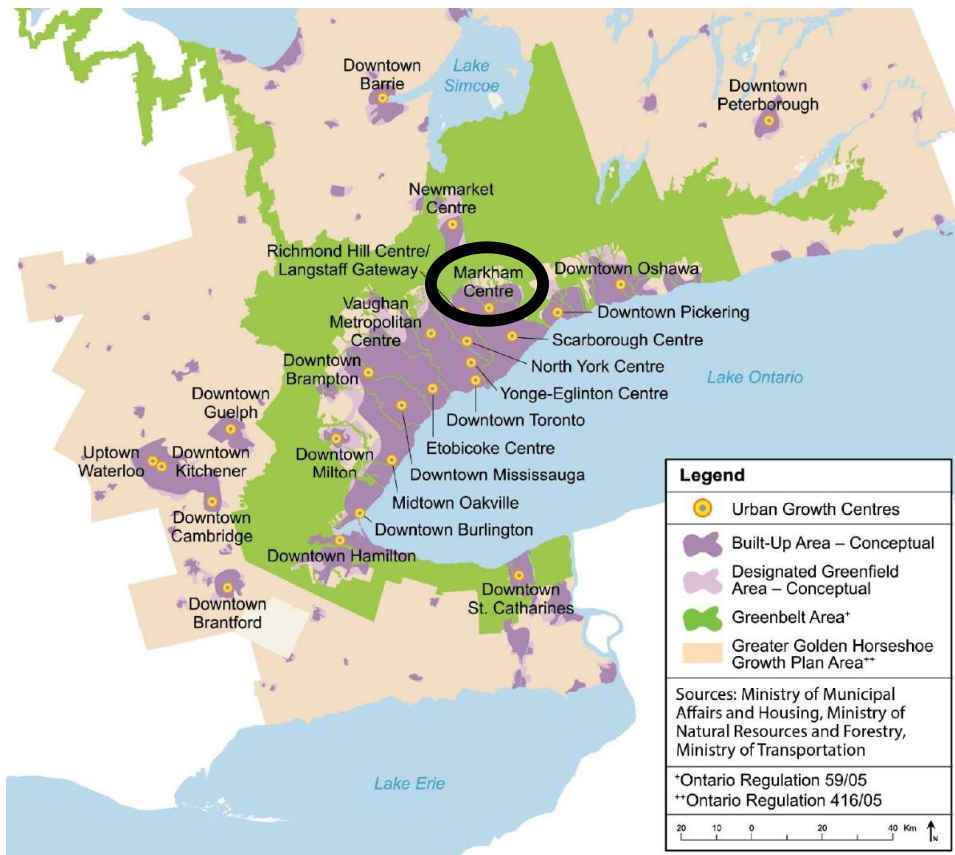


Markham Centre Evolution





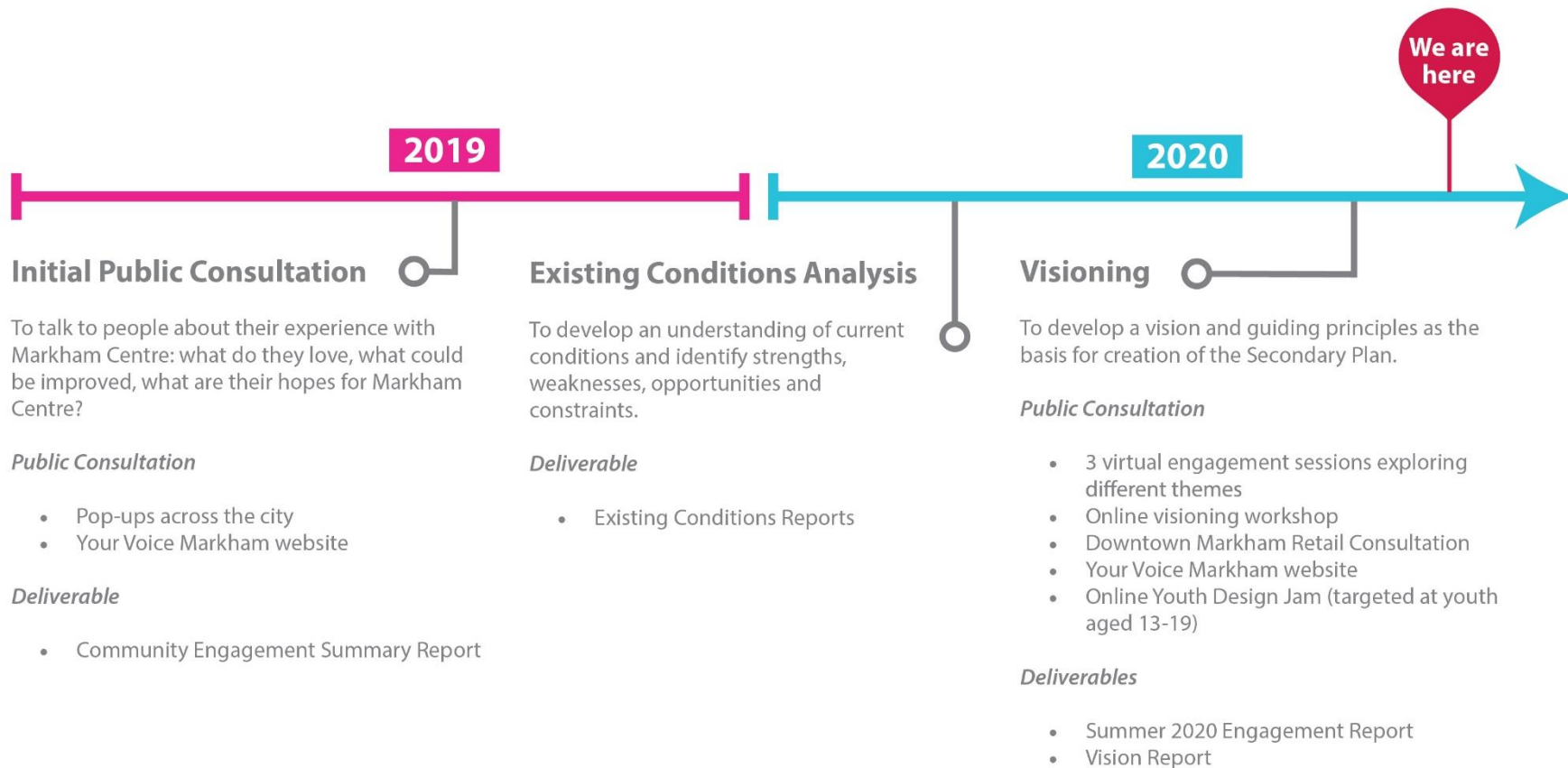
Broader Planning Policy Catches Up

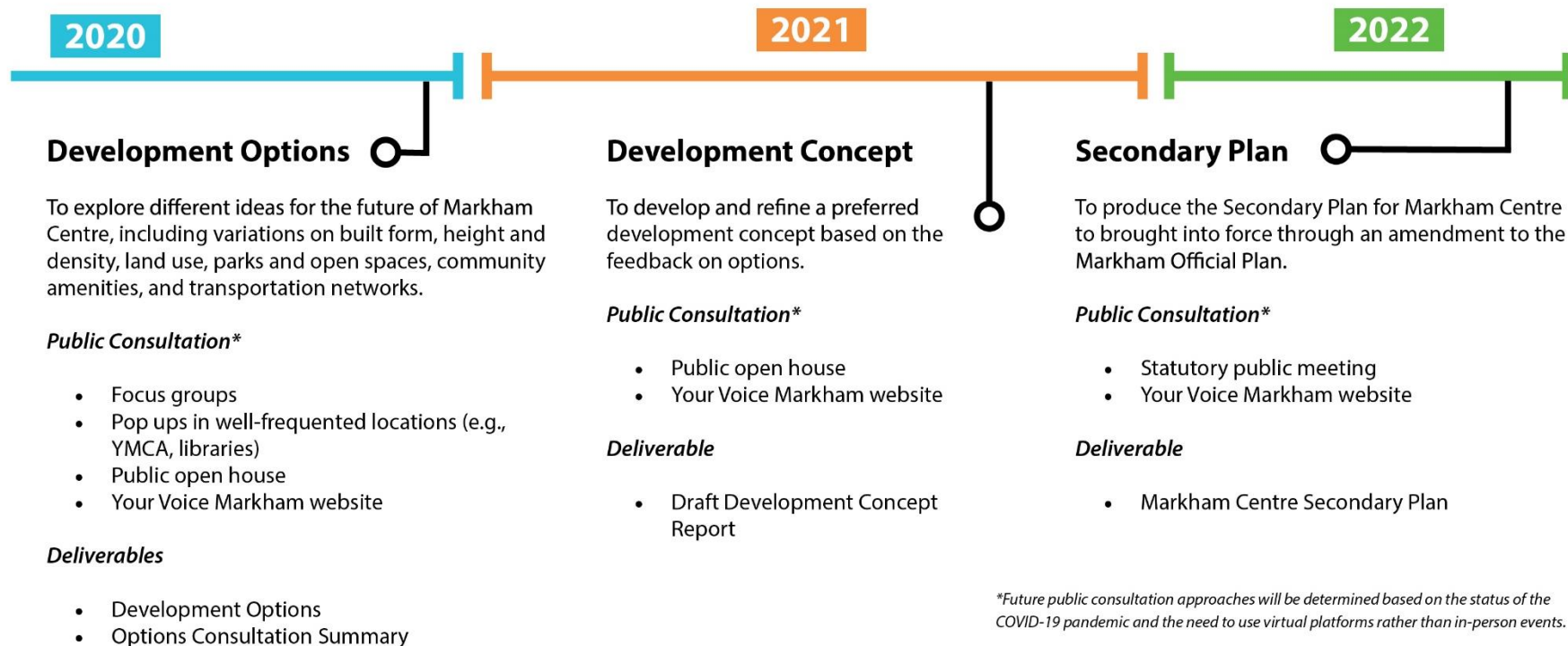






Our Process





**Future public consultation approaches will be determined based on the status of the COVID-19 pandemic and the need to use virtual platforms rather than in-person events.*



What We Heard



Today's Markham Centre is:

- Spread out and disconnected
- Car-centric and difficult to walk around or cycle
- A place to live and work, but not enough places to play



Tomorrow's Markham Centre is a:

- Complete community with a mix of uses
- Meeting place and year-round destination
- Human-scale environment with seamless mobility choices



A great downtown includes:

- Activity from day to night, on both weekdays and weekends
- A central civic plaza/square for events and celebrations
- A mix of uses: employment, dining, education, recreation, homes
- Walkability and connectivity to transit

Markham Centre's precincts/character areas:

- Are missing a variety of uses
- Feel disconnected and need to be cohesive
- Need public amenities like libraries, community centres, civic squares



Markham Centre's neighbourhoods could be better connected through:



- The Rouge River Tributary from east to west (bike and trail paths)
- A mixed-use downtown core near the GO station that links to other anchor areas

We would prioritize walking and cycling in Markham Centre with:

- A complete cycling network with adequate infrastructure
- Walkways and bike paths connecting the GO station to Viva Rapidway
- Wide sidewalks, seating areas, shaded trees, ample lighting
- Year-round, all-season accessibility and maintenance



Feedback on our draft Vision and Guiding Principles included:

- The Vision should be specific to Markham Centre's identity
- Sustainability needs to be an area of focus
- A variety of built form heights are needed
- Policies should incentivize businesses to locate in Markham Centre
- There is limited diversity of housing options here



September
23

DRAFT VISION

Markham Centre is Markham's Downtown.

It is the heart of the city. As the centre of civic life and a hub of activity, it draws people from across Markham and the region to live, work, learn, recreate, and participate with pride in the Markham community.

As a complete community, Markham Centre consists of a healthy and vibrant mix of uses that enables people to meet their daily needs locally and within convenient walking distances.

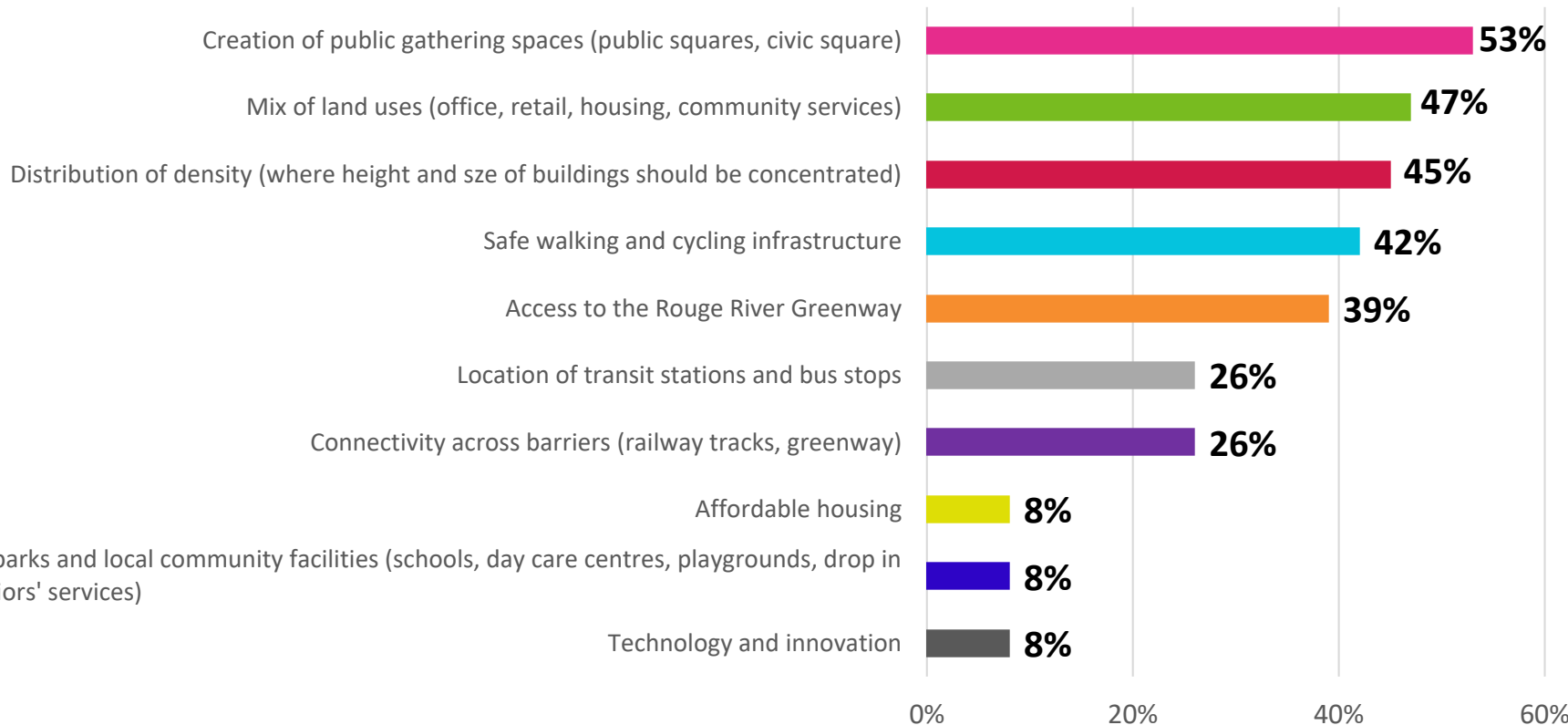
Markham Centre's diverse parts come together to create an attractive and vibrant place, a place with a distinct sense of identity, a place where people want to be.

DRAFT GUIDING PRINCIPLES

1. Create a place that is the heart of Markham
2. Support a diverse and prosperous economy
3. Support arts, culture, and recreation
4. Create an efficient and safe transportation system
5. Create a great public realm
6. Build neighbourhoods with access to all the things needed for daily life
7. Realize the full potential of the Rouge River Valley as an environmental and placemaking feature
8. Plan for inclusive neighbourhoods
9. Innovate
10. Lead while remembering



What issues are most important to you? Select up to 3.



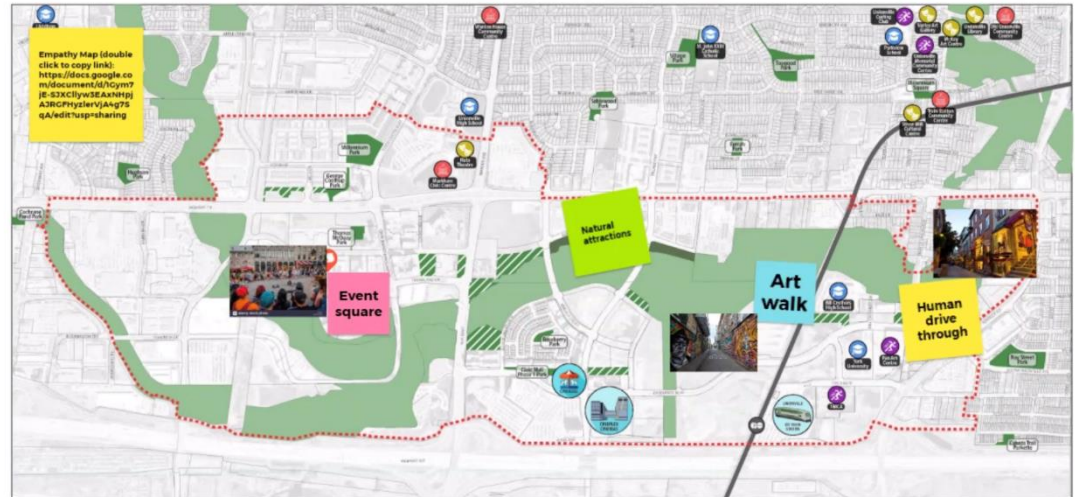


September
25

A youth-friendly Markham Centre would include:

- Social gathering spaces
- Active transportation infrastructure
- Public art and cultural events/performances
- Access to nature and greenery
- More residential and commercial development

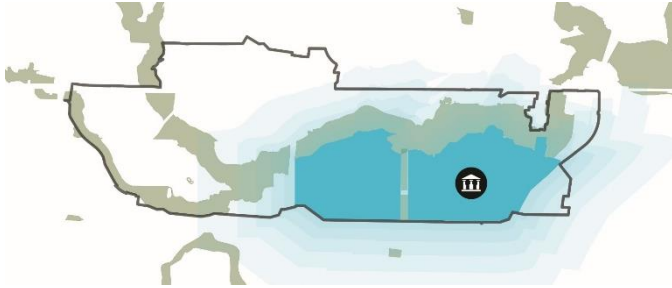
Youth Engagement Session: Jamboard



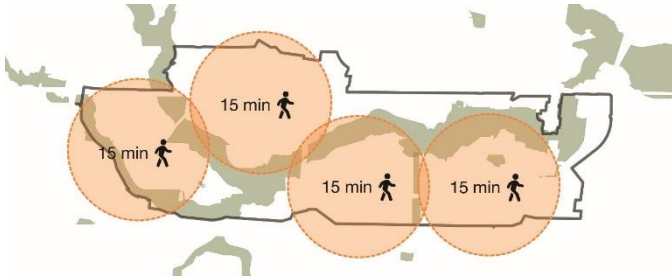


Opportunities and Challenges

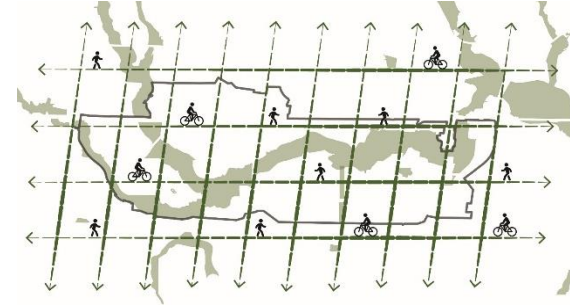
Opportunities and Challenges



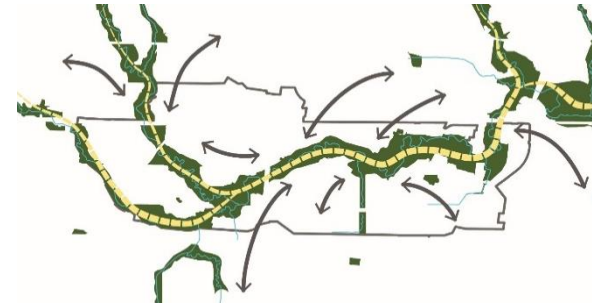
- Concentrating the focus on a downtown precinct
- Intensifying a Mobility Hub
- Anchoring the downtown with civic institutions & public amenities



- Creating 15-Minute Neighbourhoods



- Making the active way the default mode of movement
- Building an identity with placemaking & the public realm



- Realizing the potential of the greenway



Vision and Guiding Principles



Markham Centre is Markham's downtown.

**It is the heart of the city
and a vibrant, intensive,
mixed use urban core.**



1. CREATE A PLACE THAT IS THE HEART OF MARKHAM



Civic Square, Wellington NZ



Celebration Square, Mississauga



2. SUPPORT A DIVERSE AND PROSPEROUS ECONOMY





3. SUPPORT ARTS, CULTURE, AND RECREATION





4. CREATE AN EFFICIENT AND SAFE TRANSPORTATION SYSTEM





5. CREATE A GREAT PUBLIC REALM



West Don Lands, Toronto



Amsterdam, Ned



Bryant Park NYC



6. FOSTER DIVERSE BUILT FORM

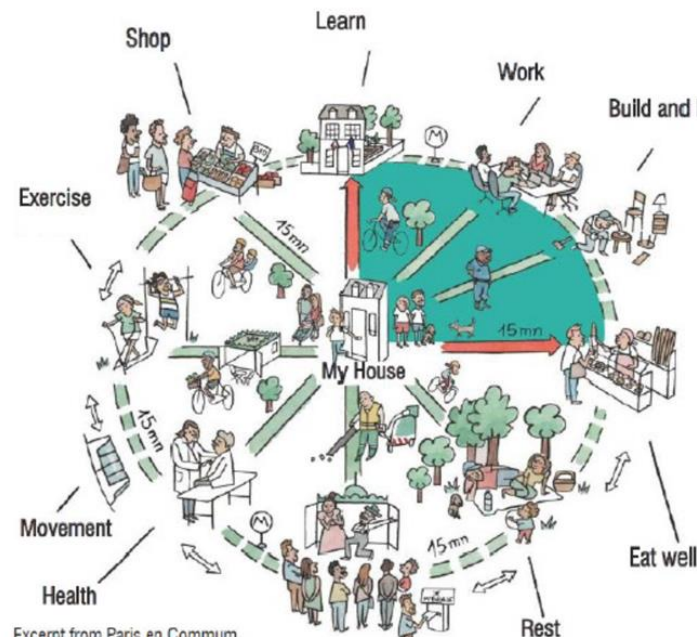




7. BUILD NEIGHBOURHOODS WITH ACCESS TO ALL THE THINGS NEEDED FOR DAILY LIFE



Canoe Landing Centre, Toronto



Excerpt from Paris en Commun



8. REALIZE THE FULL POTENTIAL OF THE ROUGE RIVER VALLEY AS AN ENVIRONMENTAL AND PLACEMAKING FEATURE



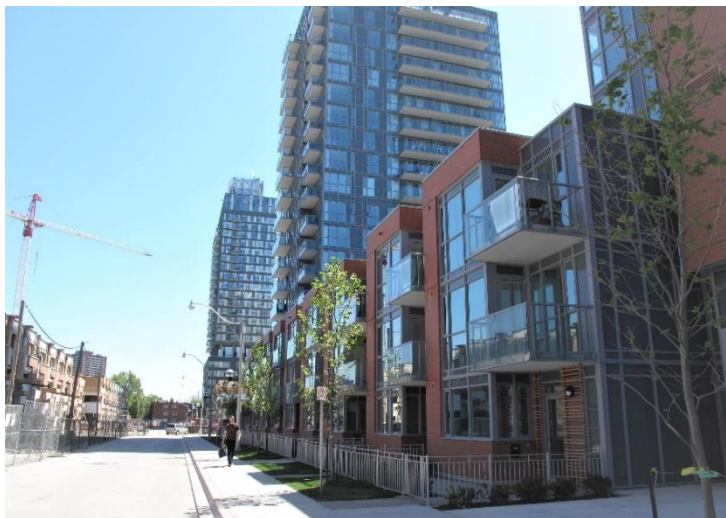


9. CHAMPION SUSTAINABILITY AND ENVIRONMENTAL PERFORMANCE





10. PLAN FOR INCLUSIVE AND DIVERSE NEIGHBOURHOODS



Regent Park, Toronto



Durand, Hamilton



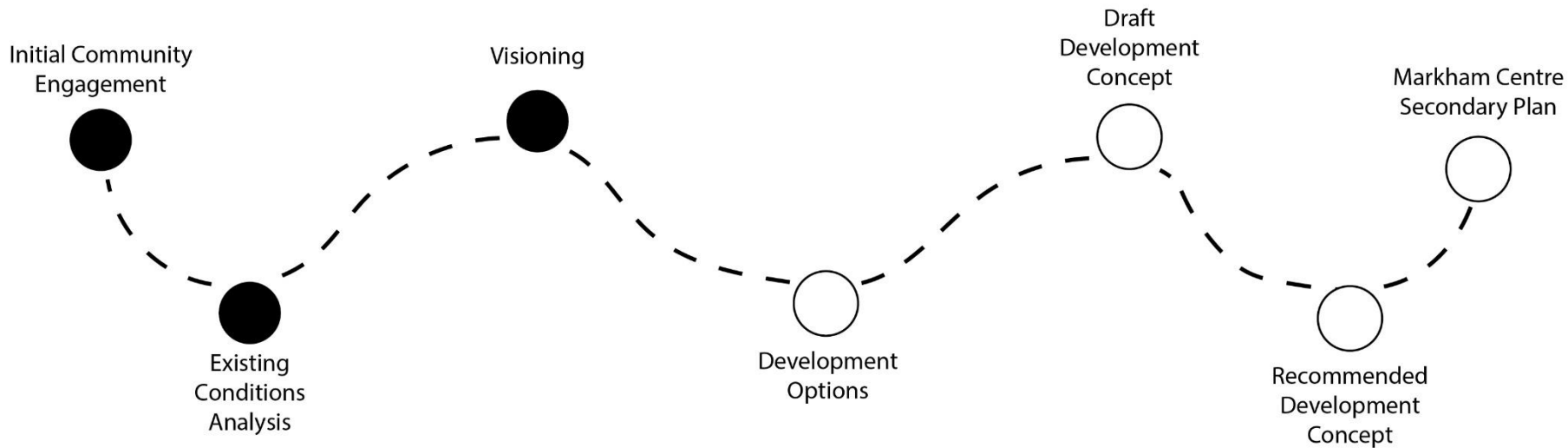
11. TRANSITION FROM SUBURBAN TO URBAN



Marine Gateway, Vancouver



Next Steps





Thank you!

john@gladkiplanning.com

gladki planning associates