

Figure 1: Allstate Parkway, Woodbine and Montgomery BRT Stations





Figure 2: Enterprise BRT Station

- Required BRT
- MTSA Boundary
- Adjacent MTSA Boundary
- 800m Radius

Q:\Geomatics\Departments\Planning\Policy\Margaret\Transit Station Area Development Potential\MTSA June 2020 Report\Report Figures.mxd



DEVELOPMENT SERVICES COMMISSION

Drawn By: RT

Checked By: CNL

DATE: 07/07/2020

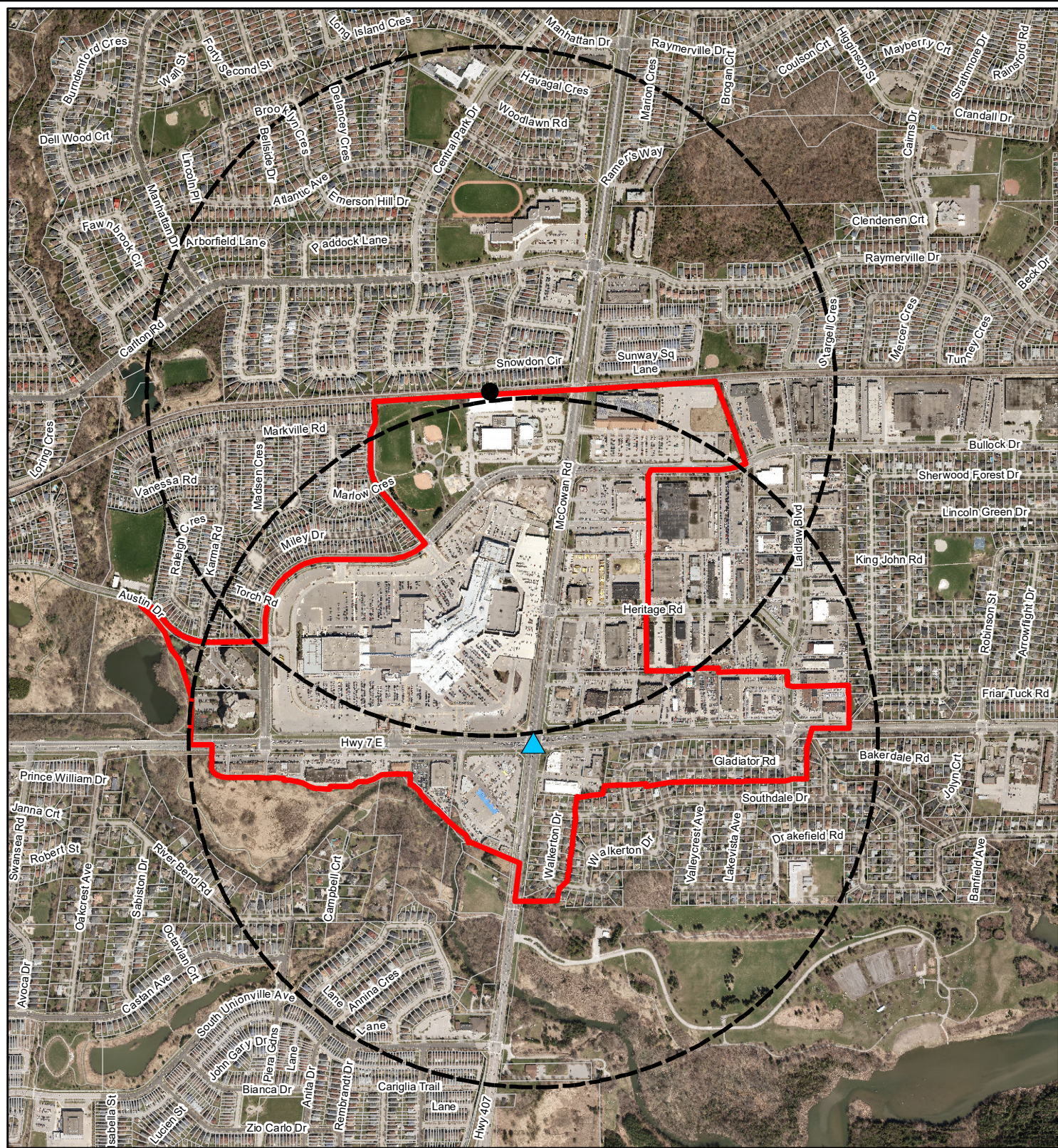


Figure 3: Centennial GO Station and McCowan BRT Station

- ▲ Additional BRT
- MTSA Boundary
- Centennial GO Station
- 800m Radius

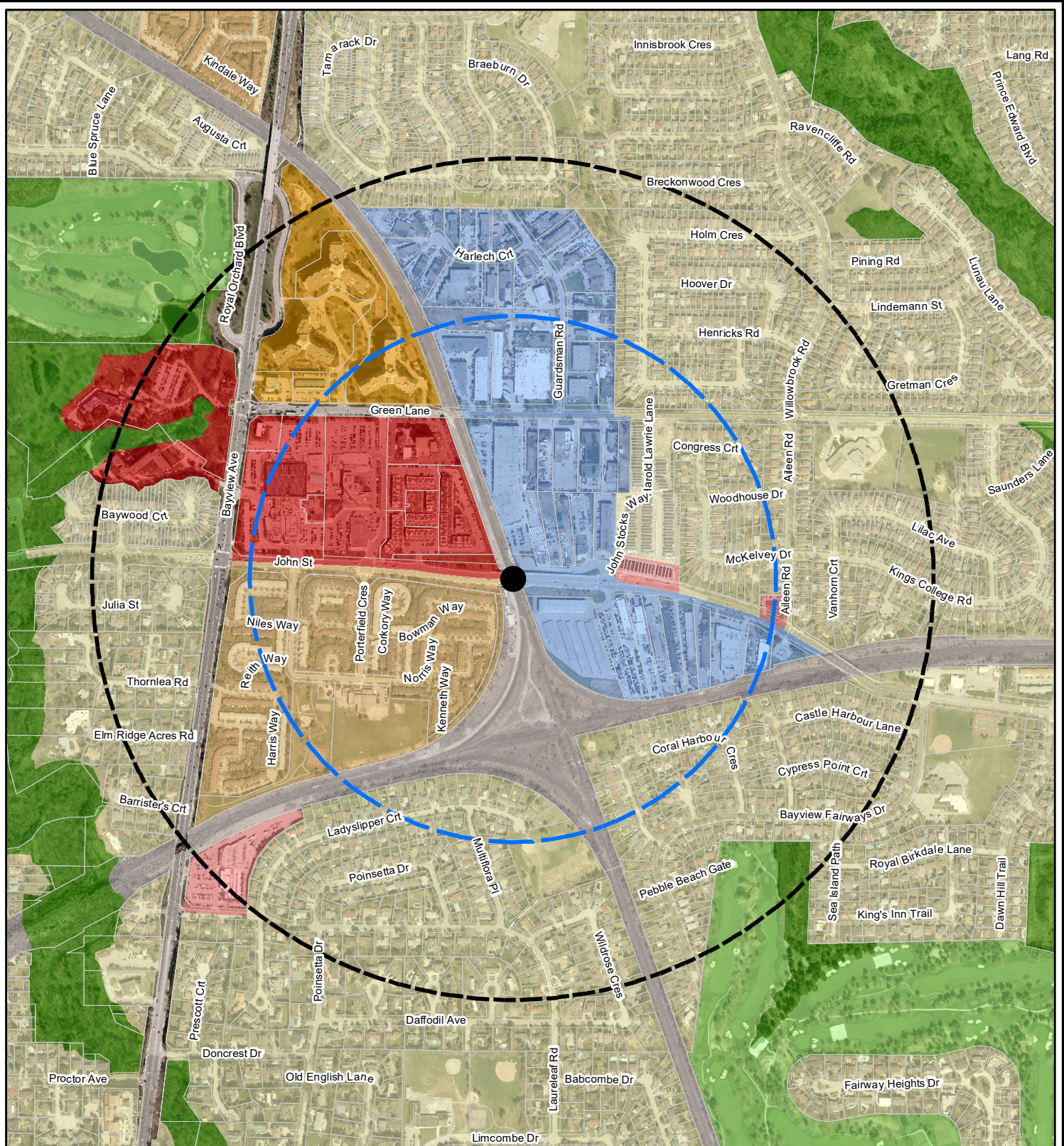
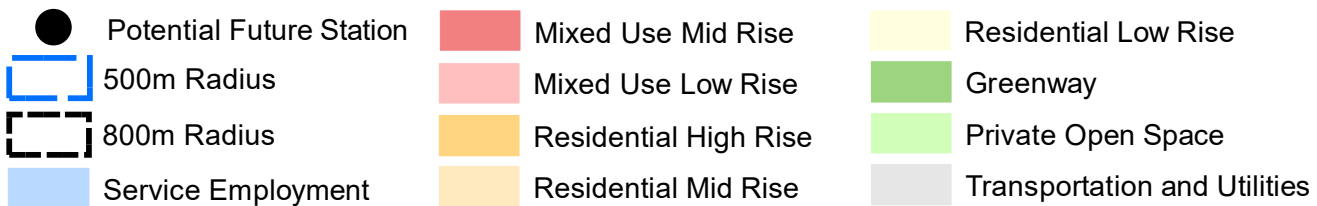
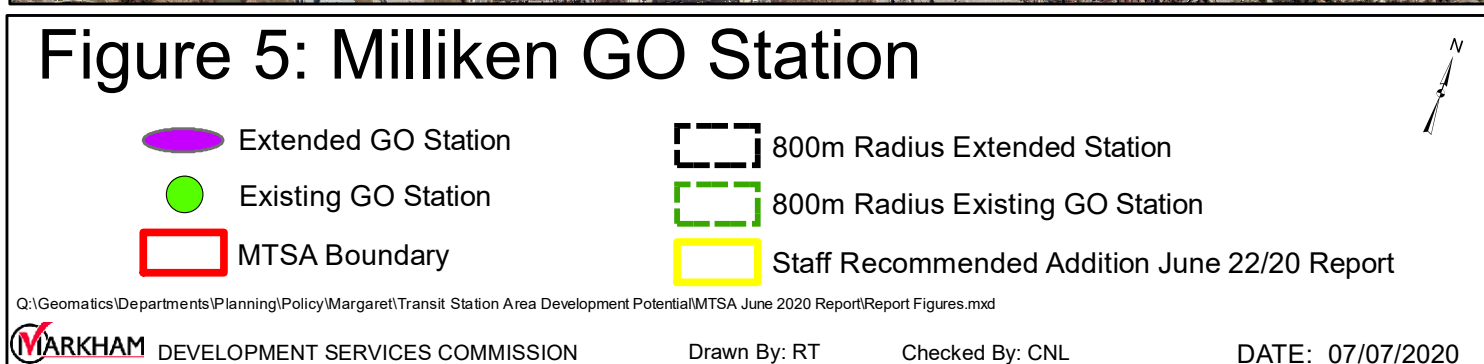


Figure 4: Potential John Street GO Station (Richmond Hill Line)





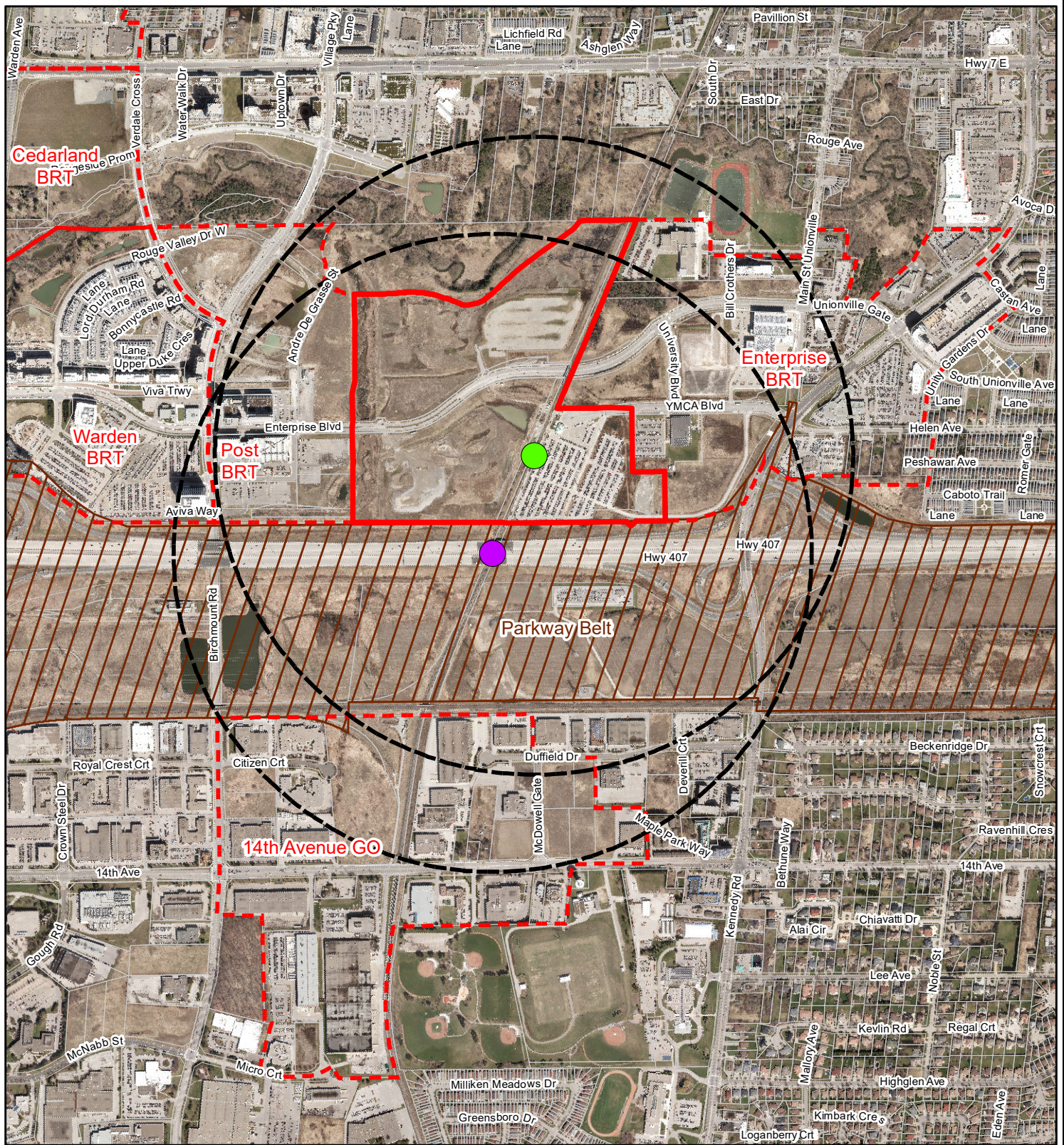


Figure 6: Unionville GO Station

- Existing GO Station
- Relocated GO Station
- MTSA Boundary
- Adjacent MTSA Boundary
- 800m Radius

