

Exterior

EAST (FRONT) ELEVATION



Photo 1



Deterioration of roof
including roofline and pitched
gable

Photo 2



Photo 3



Detailed view of right side of front façade (east elevation).

Photo 4



View of the front façade
looking south west.

Photo 5



Photo 6

SOUTH ELEVATION



Photo 7



Photo 8



Photo 9

WEST (REAR) ELEVATION

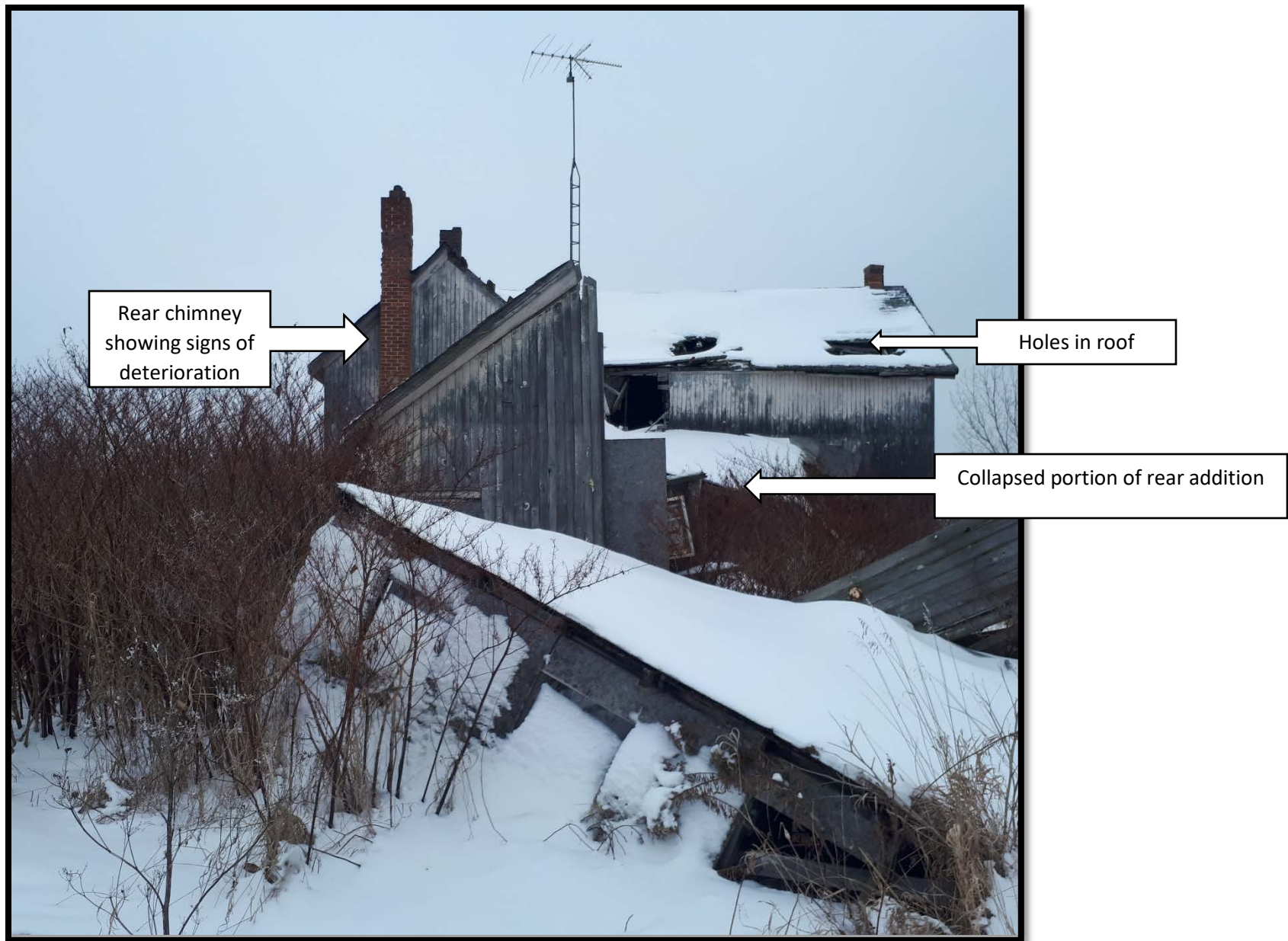


Photo 10



Hole in the right side of the west
(rear elevation) exposing interior
to the elements.

Photo 11

Detailed view of poor
condition of rear addition.



Photo 12



Photo 13

SOUTH ELEVATION



Photos 14



Deterioration/ collapse of
brick chimney shaft

Photos 15

Interior



Photo 16



View of interior of main building showing that it has been exposed to the elements and vermin

Photo 17