



# MARKHAM TRANSPORTATION FORUM

January 22, 2020

  
**York Region**





# YORK REGION GROWTH & DEVELOPMENT PLANNING

Paul Freeman, Chief Planner

January 22, 2020



# PRESENTATION OUTLINE

**1** Our Growing Region

**2** Intensification & Transit-Oriented Development

# OUR GROWING REGION

# YORK REGION GROWTH FORECASTS TO 2041

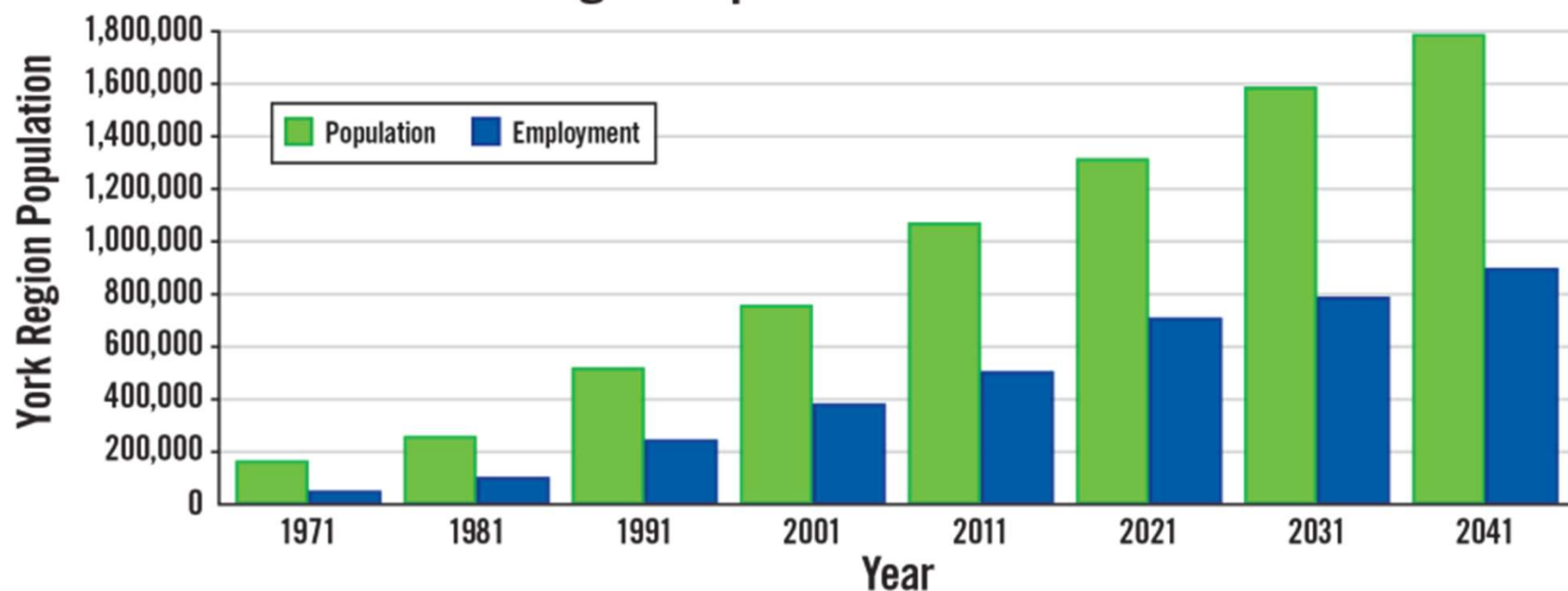
York Region's **population** is expected to grow from

**1.2** in 2017 **to** **1.8** in 2041  
MILLION MILLION

York Region's **employment** is expected to grow from

**621** in 2017 **to** **900** in 2041  
THOUSAND THOUSAND

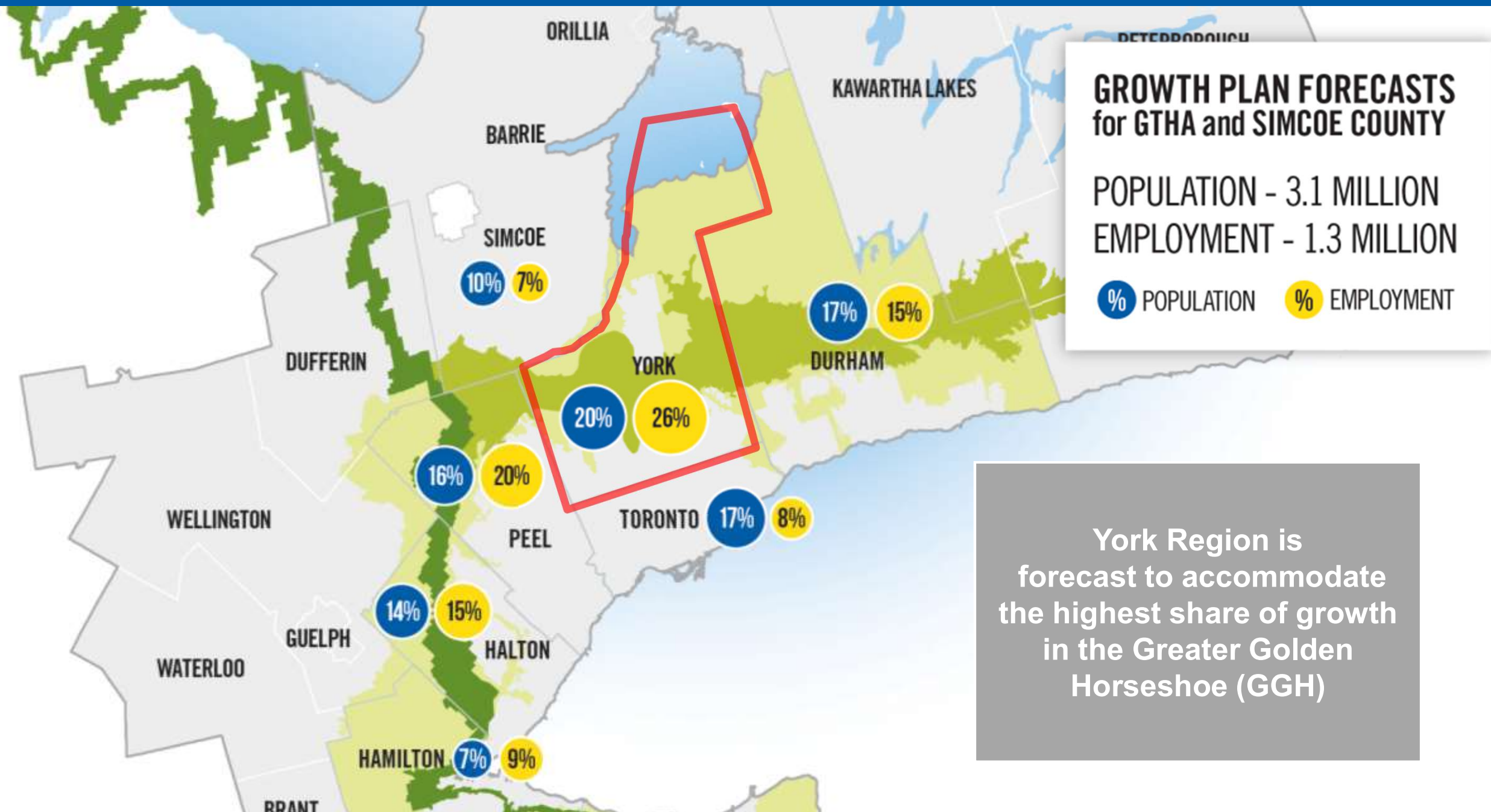
York Region Population Growth - 1971 to 2041



York Region's continued success depends on responsible planning for growth

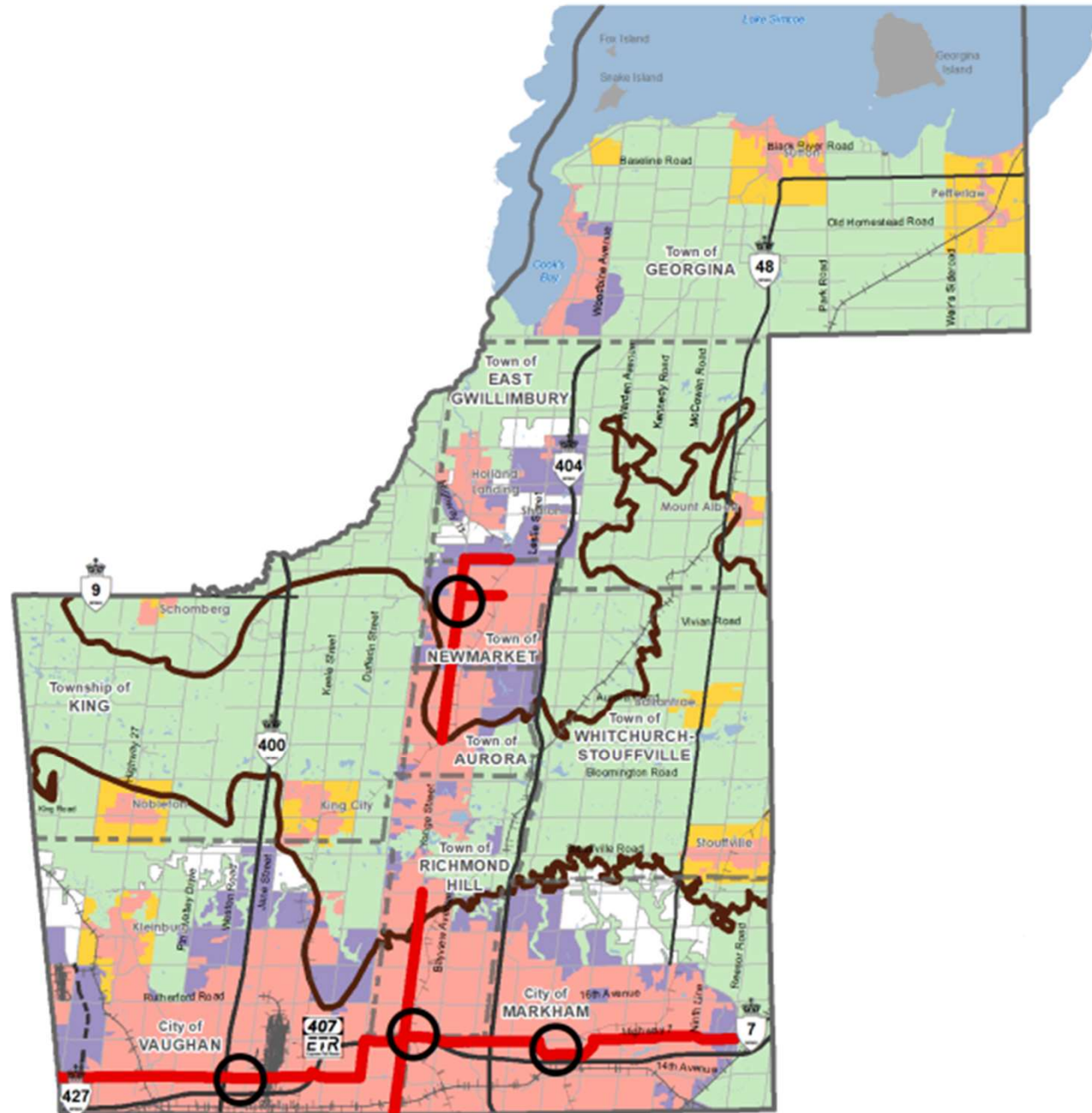


# YORK REGION'S SHARE OF GROWTH TO 2041



# INTENSIFICATION & TRANSIT-ORIENTED DEVELOPMENT

# PLANNED URBAN STRUCTURE



## Land Use Categories

- Regional Centre
- Regional Corridor
- ▭ Oak Ridges Moraine Conservation Plan Boundary
- Built-Up
- Towns and Villages
- Designated Greenfield
- "Whitebelt"
- Greenbelt Protected Countryside



# CENTRES & CORRIDORS

## NEWMARKET CENTRE



33,000 residents, 32,000 jobs

## Land Use Categories

- Regional Centre
- Regional Corridor
- ▭ Oak Ridges Moraine Conservation Plan Boundary
- Built-Up
- Towns and Villages
- Designated Greenfield
- "Whitebelt"
- Greenbelt Protected Countryside

## RICHMOND HILL/ LANGSTAFF GATEWAY CENTRE



48,000 residents, 31,000 jobs

## VAUGHAN METROPOLITAN CENTRE

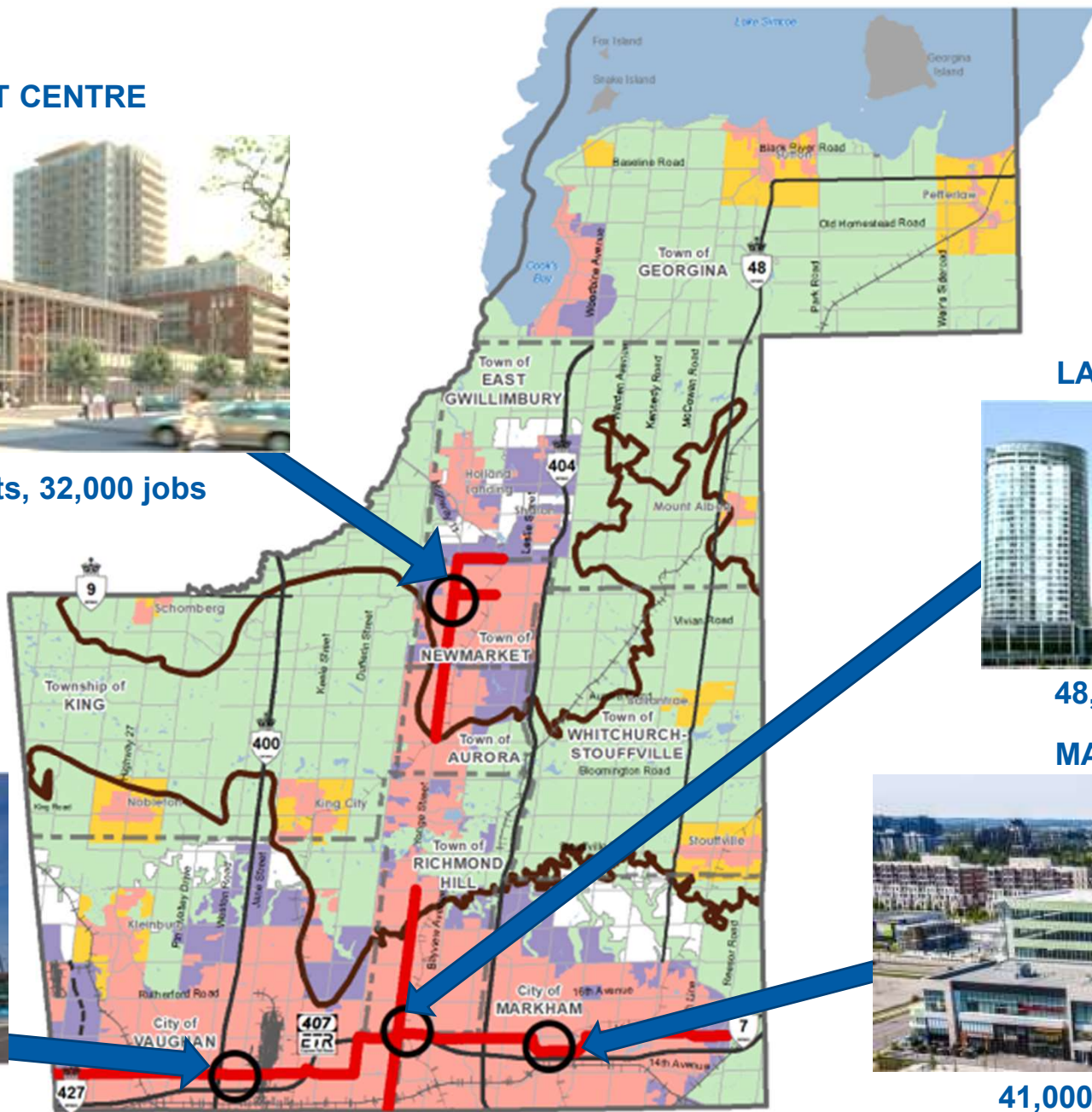


25,000 residents, 11,500 jobs

## MARKHAM CENTRE



41,000 residents, 39,000 jobs



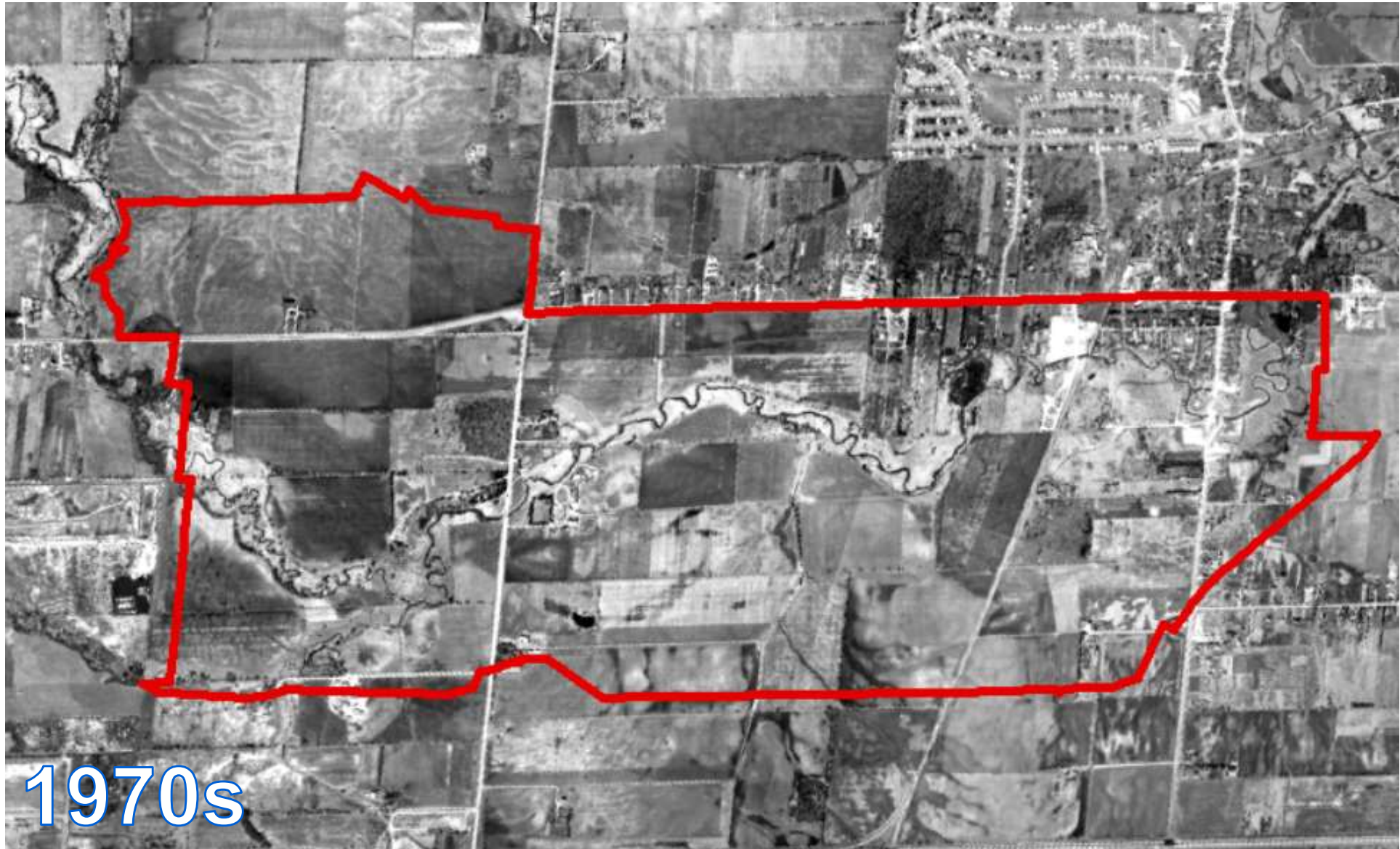


# MARKHAM CENTRE



1950s

# MARKHAM CENTRE



1970s



# MARKHAM CENTRE



1980s



# MARKHAM CENTRE



1990s



# MARKHAM CENTRE





# MARKHAM CENTRE



TODAY

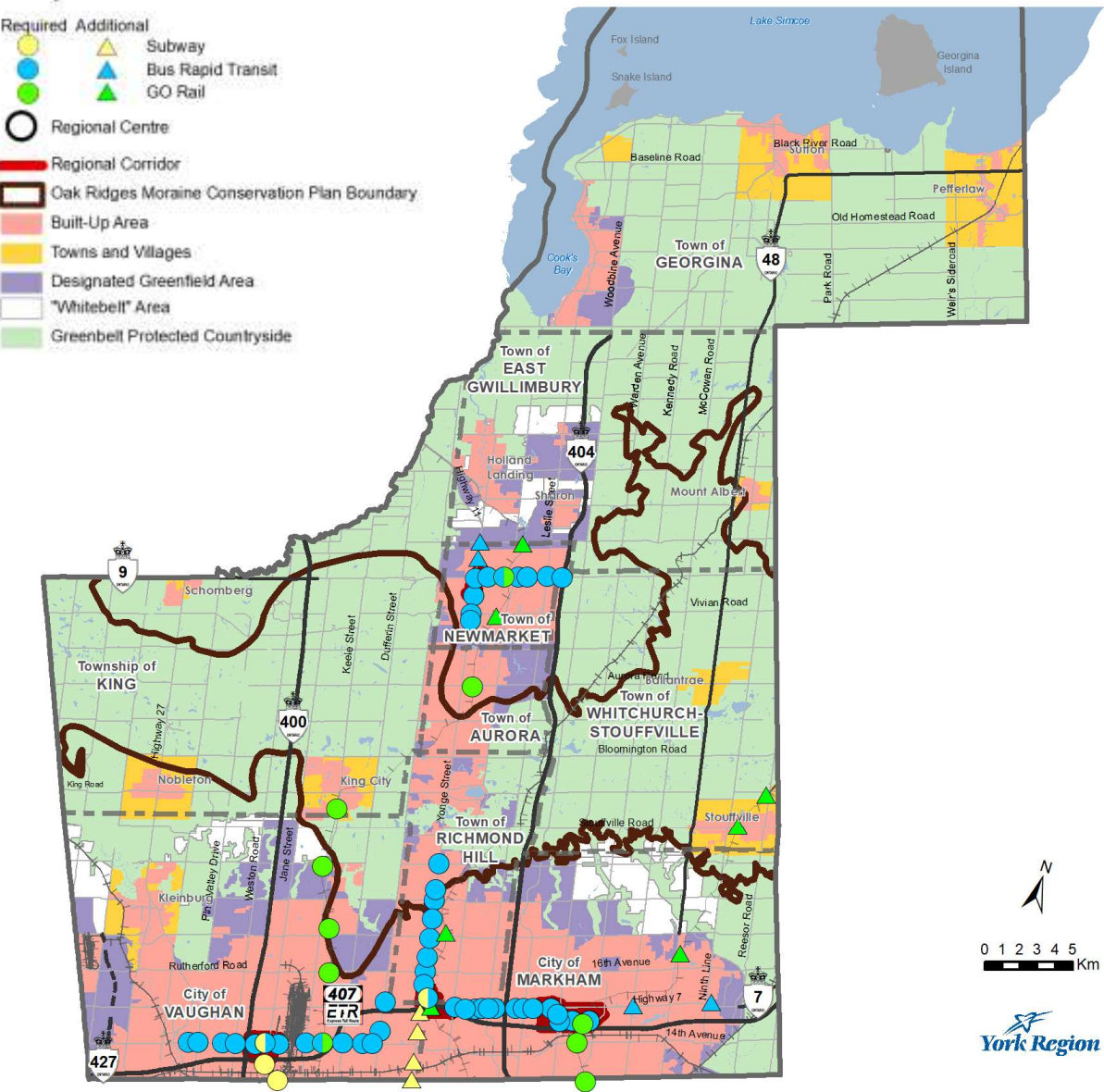


# PAST INVESTMENTS WERE KEY TO BUILDING THE REGION'S URBAN INFRASTRUCTURE



# PROPOSED MAJOR TRANSIT STATION AREAS





Major Transit Stations

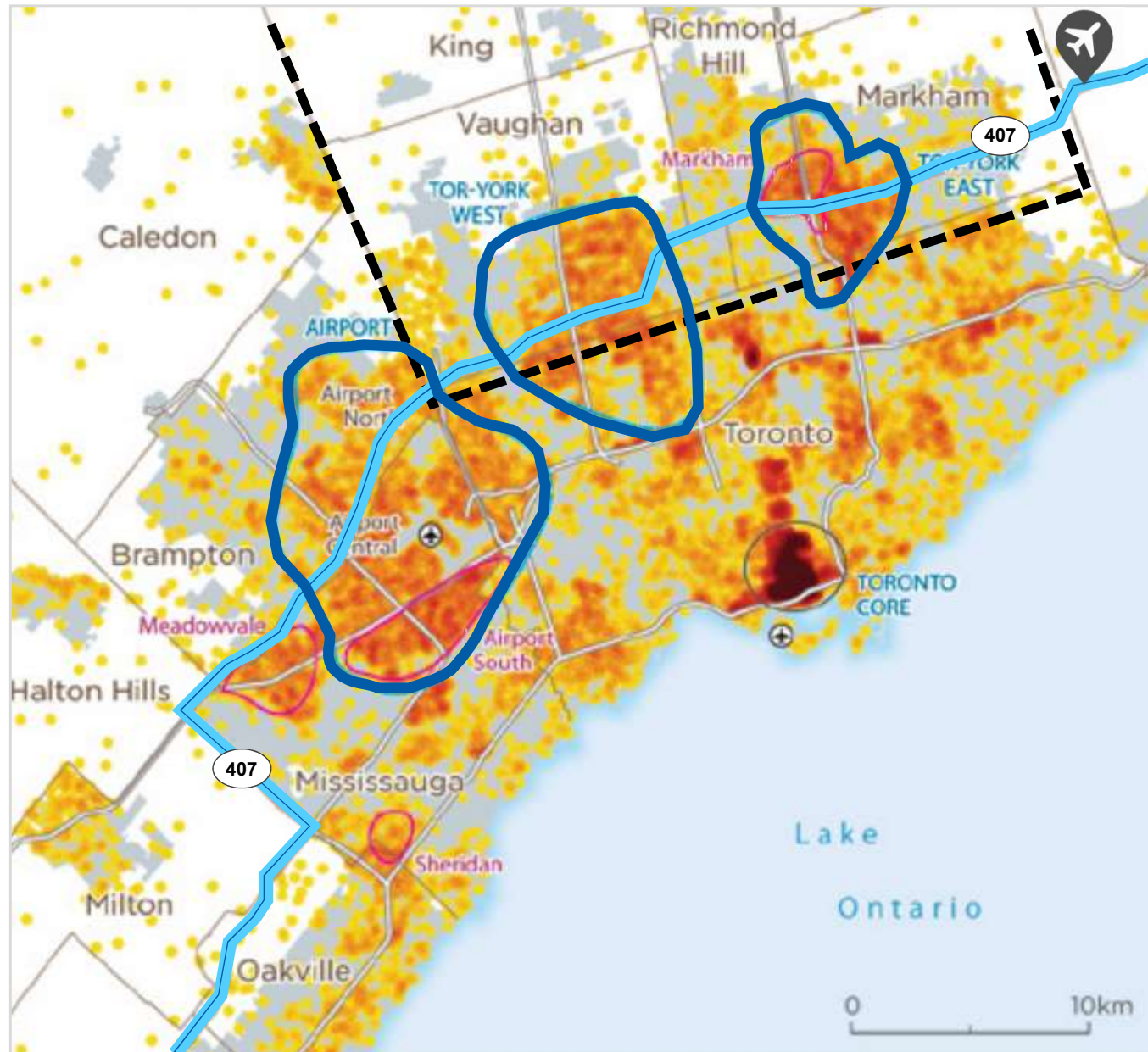


Municipality	Required MTSAs	Additional MTSAs	Total MTSAs
Aurora	1	0	1
East Gwillimbury	0	2	2
Georgina	0	0	0
King	1	0	1
Markham	11	4	15
Markham / Richmond Hill	5	0	5
Markham / Vaughan	0	4	4
Newmarket	10	2	12
Richmond Hill	10	1	11
Richmond Hill / Vaughan	1	0	1
Vaughan	18	0	18
Whitchurch-Stouffville	0	2	2
York Region	57	15	72



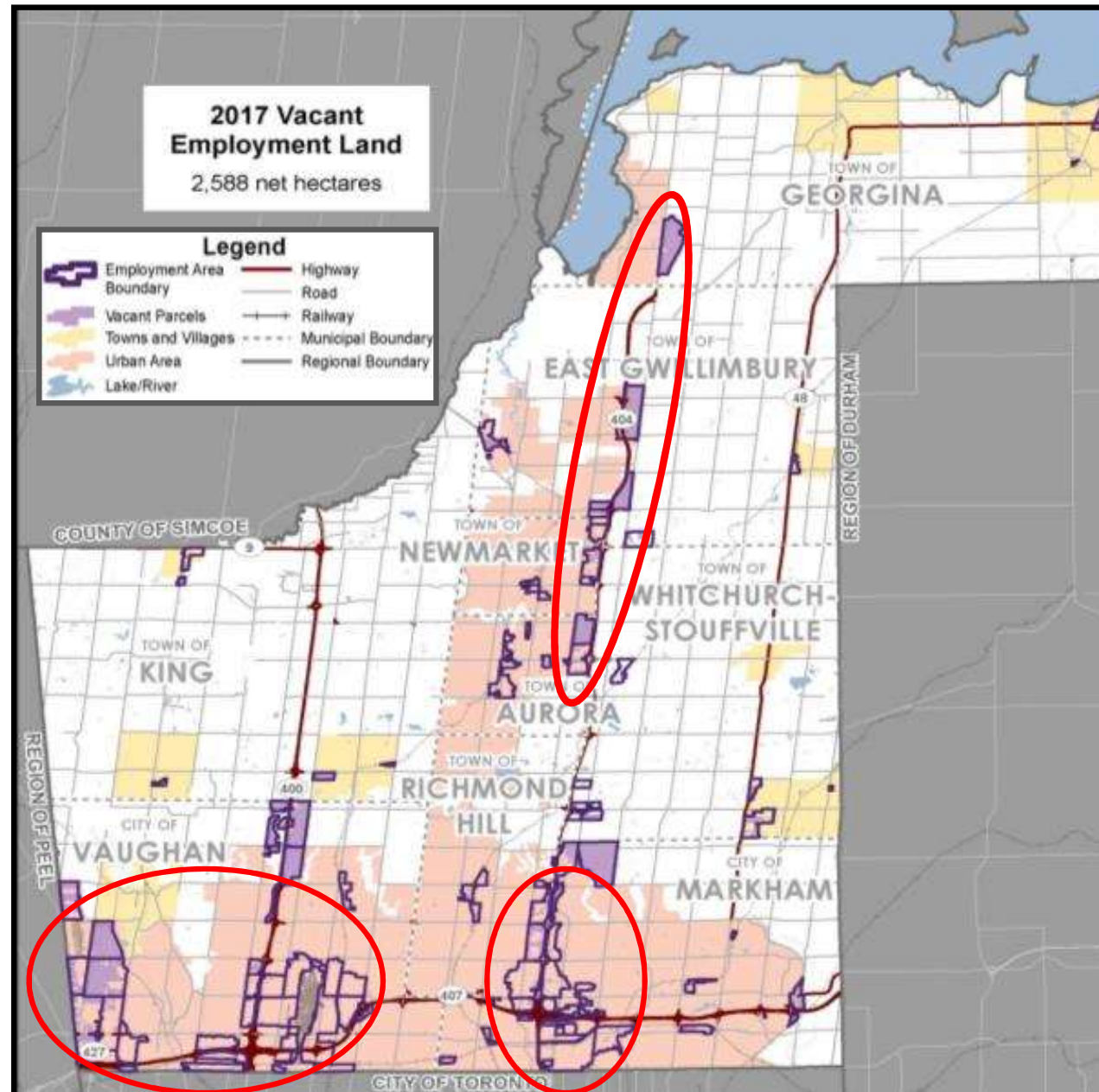
# GREATER GOLDEN HORSESHOE EMPLOYMENT

-  York Region Municipal Boundary
-  Employment Megazones
-  Transitway
-  Potential Pickering Airport

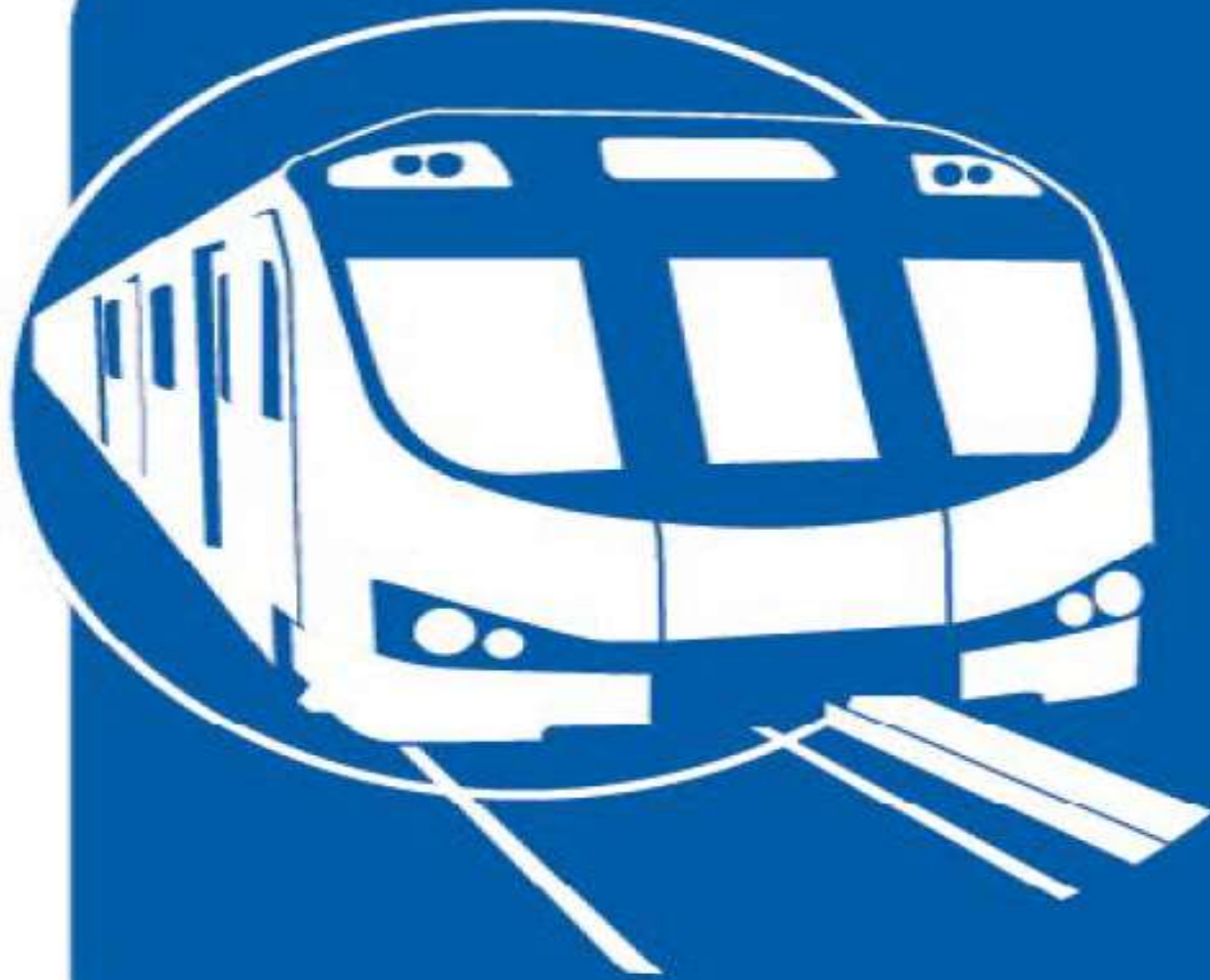


Source: The Neptis Foundation, 2015

# EMPLOYMENT LANDS IN YORK REGION



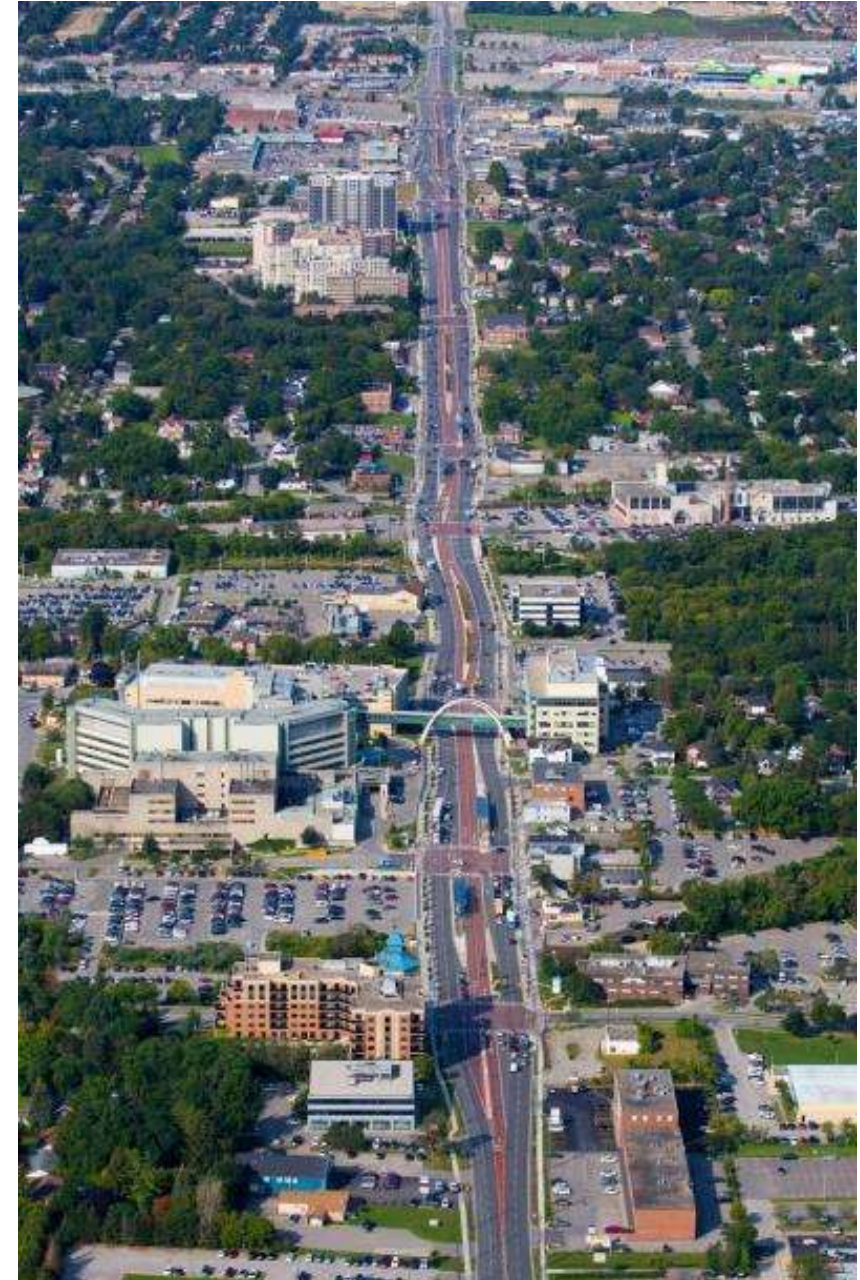




YONGE  
**Subway**  
EXTENSION  
remains the top  
transit priority



# BUS RAPID TRANSIT SUPPORTS REGIONAL CENTRES & CORRIDORS





# KEY MESSAGES

- 1 Continued growth in York Region
- 2 Planning for complete communities
- 3 Promote transit supportive development
- 4 Coordination of land use planning and infrastructure
- 5 Continued collaboration with Local Municipalities

Opportunities to get involved through the Municipal Comprehensive Review (MCR)  
[york.ca/mcr](http://york.ca/mcr)



# QUESTIONS/DISCUSSION

For more information, contact:

**Paul Freeman**, Chief Planner

York Region, Corporate Services Department

[Paul.Freeman@york.ca](mailto:Paul.Freeman@york.ca)

1-877-464-9675 ext. 71534

