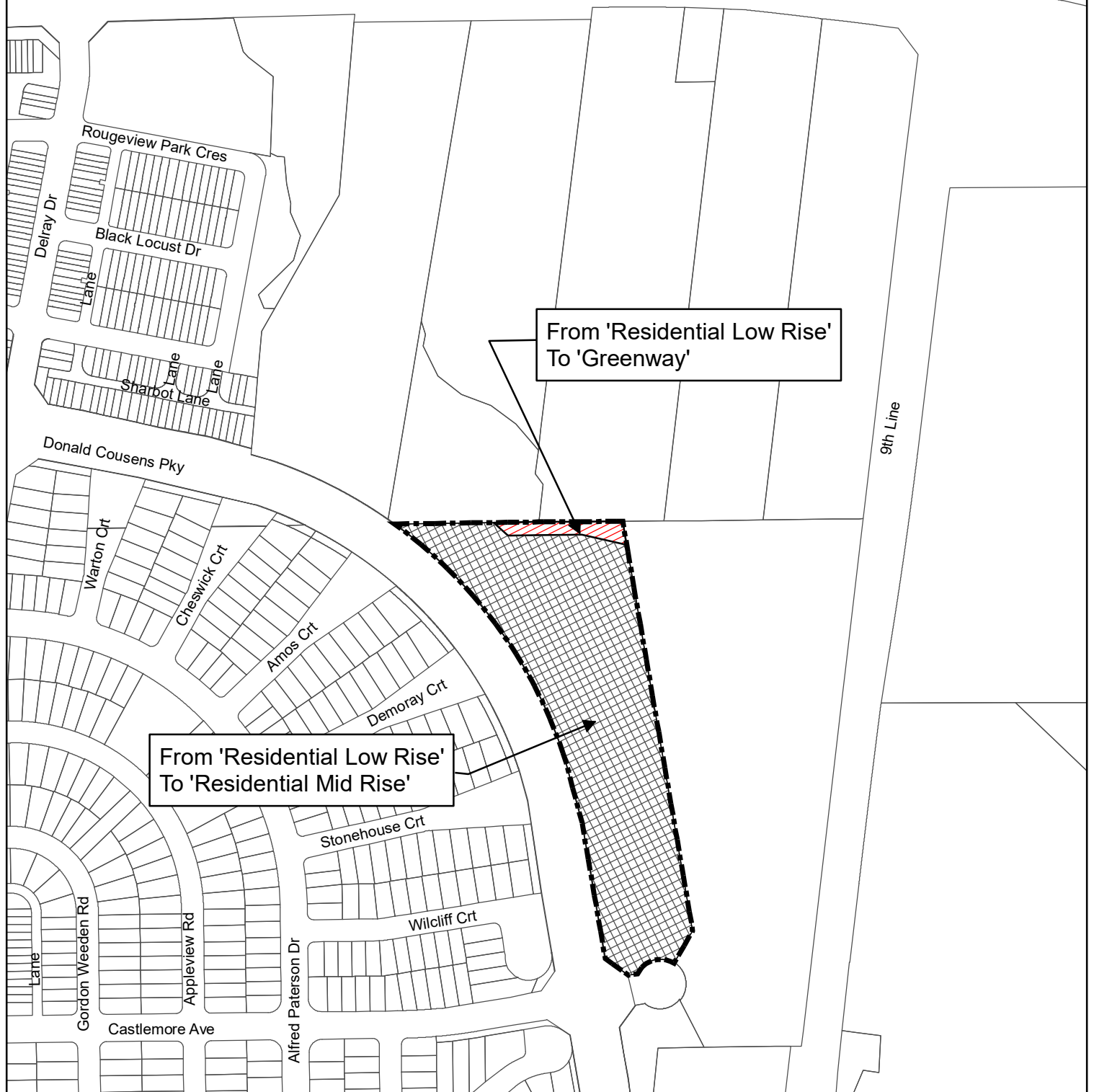


Major Mackenzie Dr E



AMENDMENT TO MAP 3 - LAND USE CITY OF MARKHAM OFFICIAL PLAN 2014, as amended

- BOUNDARY OF AREA COVERED BY THIS AMENDMENT
- FROM 'RESIDENTIAL LOW RISE' to 'GREENWAY'
- FROM 'RESIDENTIAL LOW RISE' to 'RESIDENTIAL MID RISE'

Q:\Geomatics\New Operation\2019 Agenda\OP\OP18129244\Amendment\OP Schedules.mxd



DEVELOPMENT SERVICES COMMISSION

SCHEDULE "B" TO OPA No.

Drawn By: CPW
Checked By: SM

SCALE: NTS
DATE: 30/08/2019