

YORK REGION Municipal Comprehensive Review

Paul Freeman, Chief Planner
York Region, Corporate Services Department
Markham Development Services Committee
April 29, 2019



PRESENTATION OUTLINE

1

Our Growing Region

2

Municipal Comprehensive Review

3

Consultation and Engagement

OUR GROWING REGION

YORK REGION GROWTH FORECASTS TO 2041

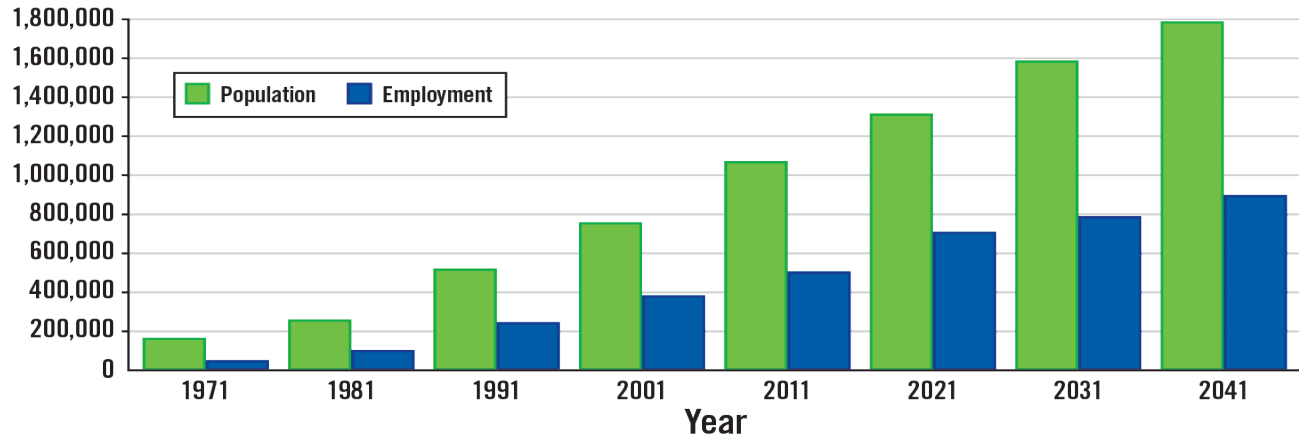
York Region's **population** is expected to grow from

1.2 MILLION in 2017 to **1.8** MILLION in 2041

York Region's **employment** is expected to grow from

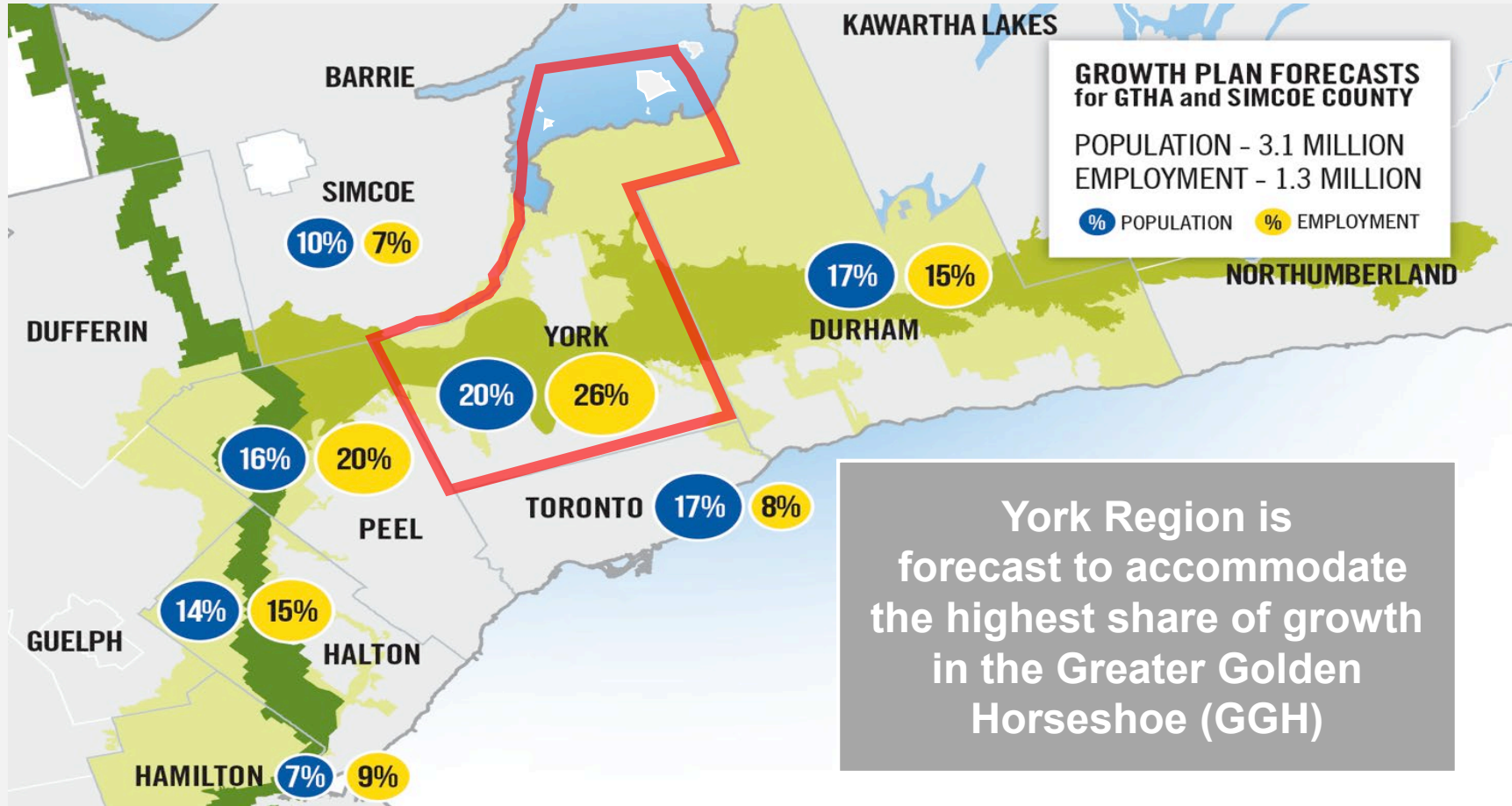
621 THOUSAND in 2017 to **900** THOUSAND in 2041

York Region Growth - 1971 to 2041



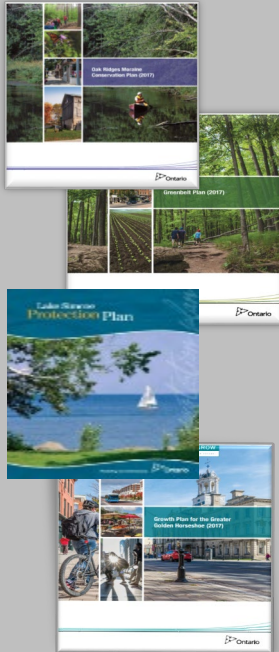
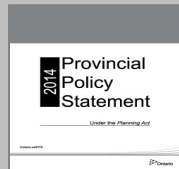
York Region's continued success depends on responsible planning for growth

YORK REGION'S SHARE OF GROWTH TO 2041



PLANNING CONTEXT

Provincial



Regional



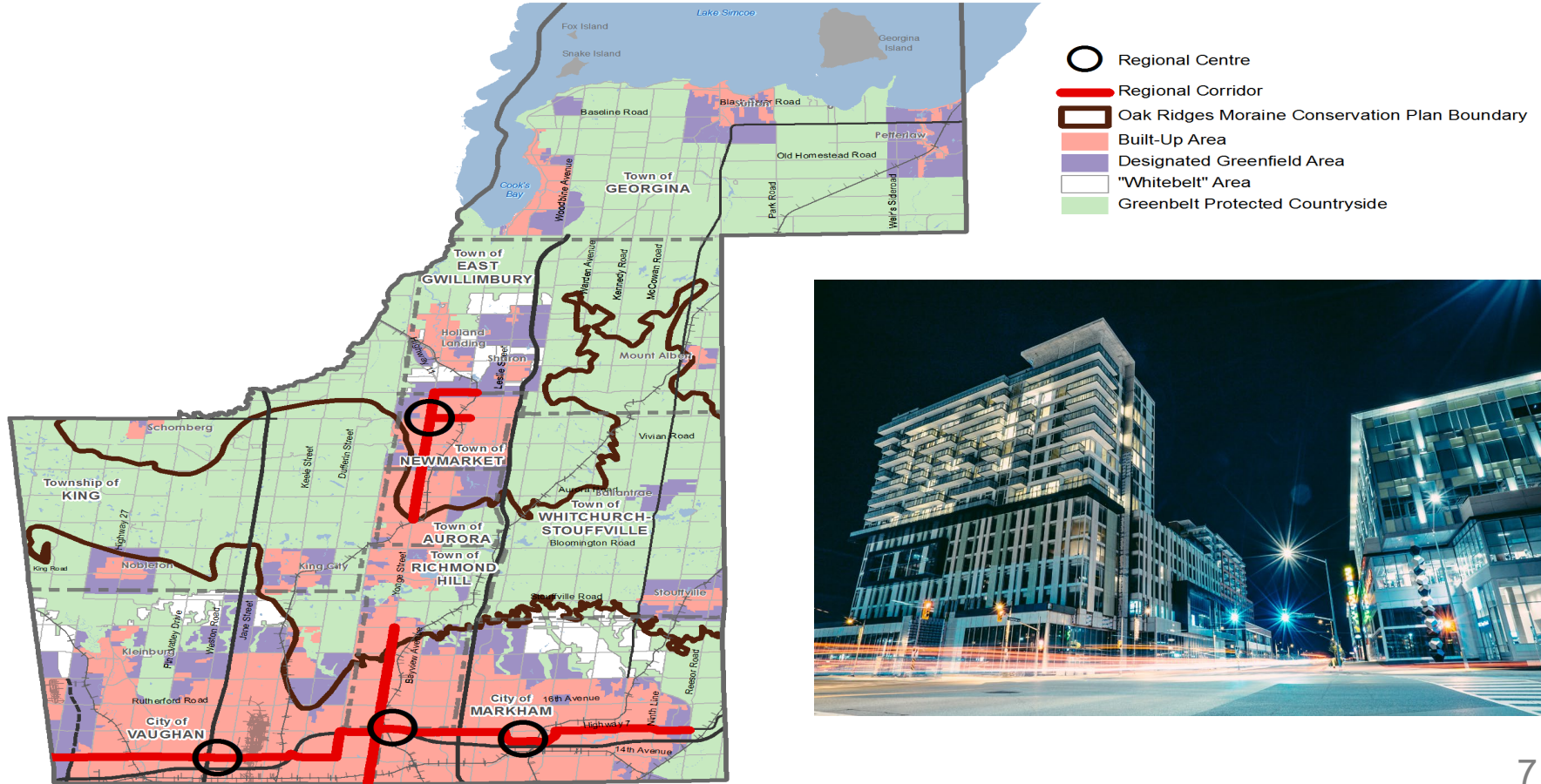
Local



Development



PLANNED URBAN STRUCTURE



YORK REGION

MUNICIPAL COMPREHENSIVE REVIEW (MCR)

YORK REGION MCR FOCUS AREAS

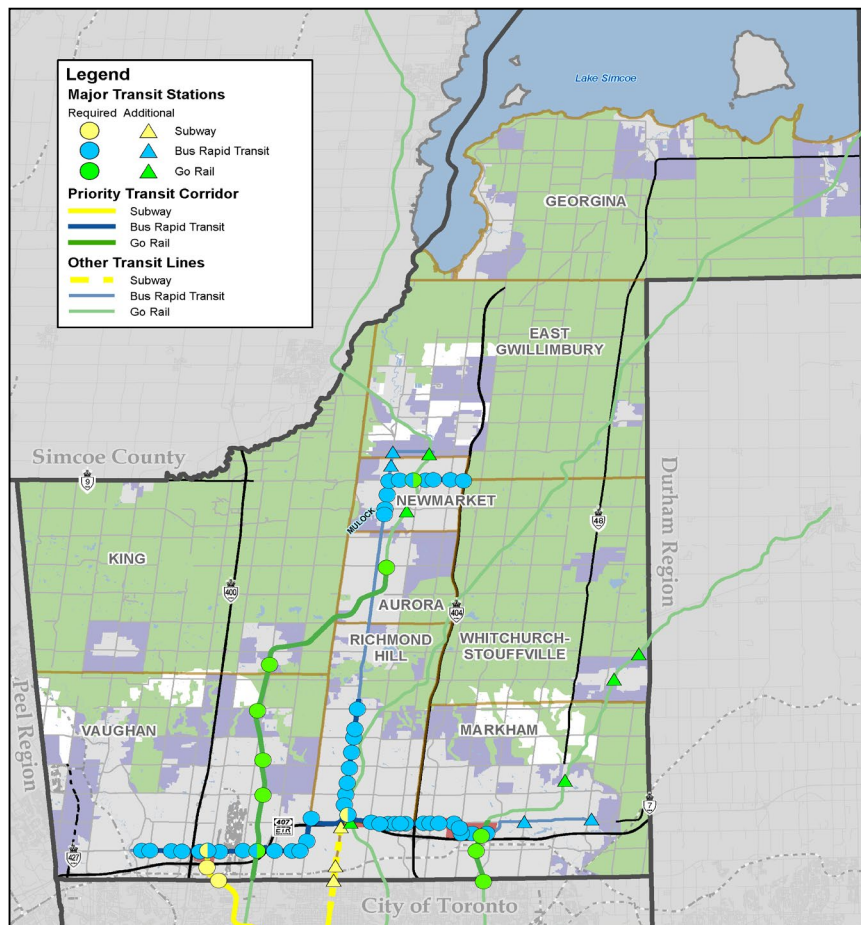
- Planning for Intensification, Employment and Housing
- Update Growth Forecast and Land Needs
- Address Climate Change
- Protect Agricultural and Natural Heritage
- Align Infrastructure with Growth
- Undertake Fiscal Impact Analysis
- Review and Update Regional Official Plan Policies

PLANNING FOR INTENSIFICATION

- Work closely with local municipal staff to establish Intensification Targets
- Identify, delineate and set targets for:
 - Major Transit Station Areas
 - Strategic Growth Areas
 - Urban Growth Centres
- Council can request alternative targets through the Minister
- Can plan to achieve MTSA targets beyond 2041



PROPOSED MAJOR TRANSIT STATION AREAS (MTSAs) IN YORK REGION



Municipality	Required MTSAs	Additional MTSAs	Total MTSAs
Aurora	1	0	1
East Gwillimbury	0	2	2
Georgina	0	0	0
King	1	0	1
Markham	11	4	15
Markham / Richmond Hill	5	0	5
Markham / Vaughan	0	3	3
Newmarket	10	2	12
Richmond Hill	10	0	10
Richmond Hill / Vaughan	1	0	1
Vaughan	18	0	18
Whitchurch-Stouffville	0	2	2
York Region	57	13	70

PROPOSED MTSAs IN MARKHAM

Municipality	Required MTSAs	Additional MTSAs	Total MTSAs
Markham	11	4	15
Markham/Richmond Hill	5	0	5
Markham/Vaughan	0	3	3
Total	16	7	23

Required Additional

- Subway
- Bus Rapid Transit
- GO Rail

Priority Transit Corridors

GO Rail

Other Transit Lines

- Subway
- Bus Rapid Transit
- GO Rail

Regional Centre

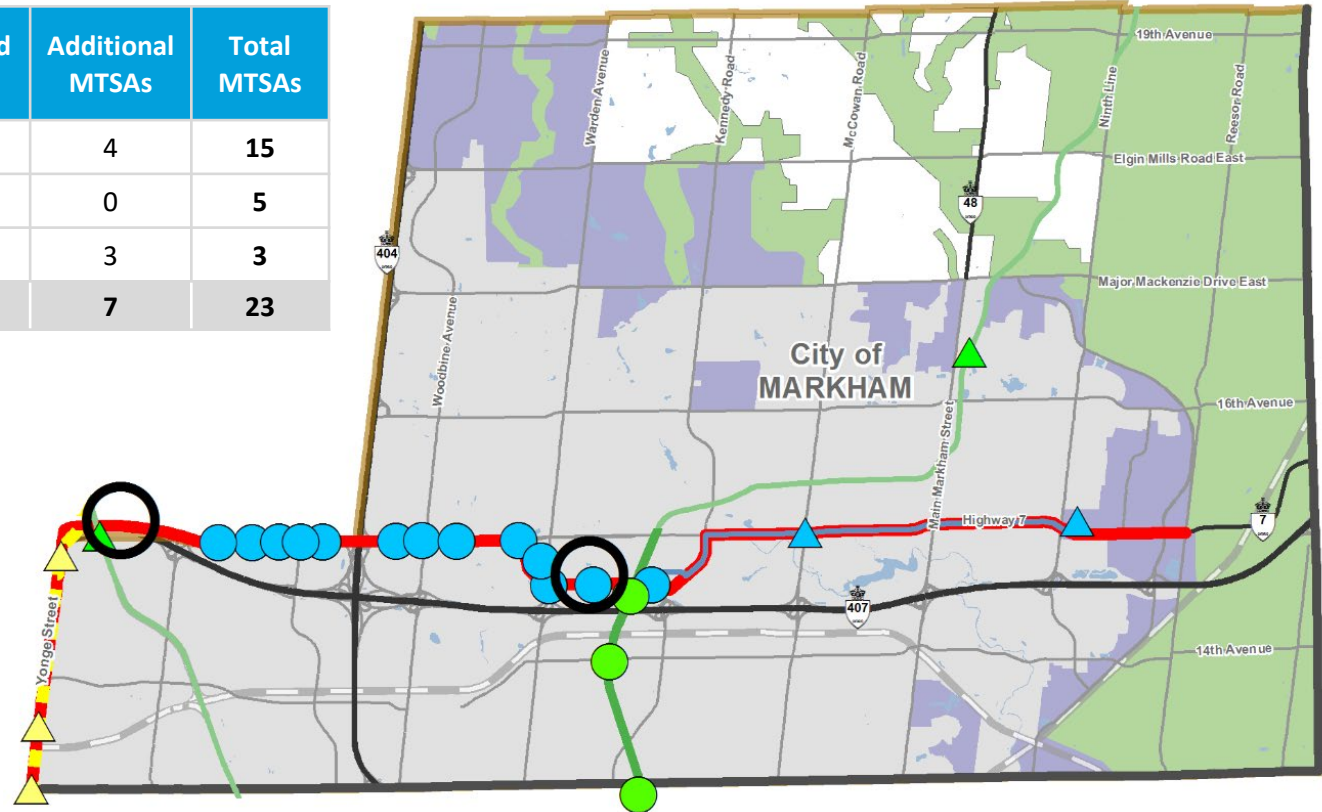
Regional Corridor

Built-Up Area

Designated Greenfield Area

"Whitebelt" Area

Greenbelt Protected Countryside



VISUALIZING DENSITY



Visualizing compact, complete and transit-integrated communities

PLANNING FOR EMPLOYMENT

- Assess current and future structure and composition of employment
- Identify density targets for all employment areas
- Designate employment lands in the ROP
- Identify intensification opportunities
- Establish employment conversion criteria



Conversions of employment lands considered during the Region's MCR

PLANNING FOR A RANGE AND MIX OF HOUSING

- Identify a range and mix of housing options to meet projected needs of current and future residents
- Establish targets for affordable ownership and rental housing
- Identify mechanisms for implementation
- Align with the Region's 10-Year Housing Plan



UPDATED GROWTH FORECASTS AND LAND NEEDS

- Update population, housing and employment forecasts to 2041, including determining the need for urban expansion if necessary
- Land budget analysis based on Provincial Land Needs Assessment methodology
- Local municipal targets and forecasts



CLIMATE CHANGE

- Develop a Community Energy Plan and a Climate Change Action Plan
- Risk assessment and other climate change initiatives
- Greenhouse gas emission targets
- Develop actions to reduce emissions, mitigate and adapt to climate change impacts
- Update Regional Official Plan policies



AGRICULTURAL AND NATURAL HERITAGE

- Update Agricultural System and Natural Heritage System policy and mapping to reflect Provincial Plan conformity



INFRASTRUCTURE COORDINATION

MCR is being coordinated with the updates of master plans and fiscal analysis:

- The Regional Official Plan
- Transportation Master Plan
- Water and Wastewater Master Plan
- Fiscal Impact Alignment



Alignment of growth planning, financing and servicing

REGIONAL OFFICIAL PLAN POLICY REVIEW AND UPDATE

- Review and update key policy areas
- Incorporate Provincially defined or mandated mapping
- Align with infrastructure and financial plans



MUNICIPAL COMPREHENSIVE REVIEW WORK PLAN

Q1 2019	Q3 2019	Q4 2019	Q1 2020	Q2 2020	Q4 2020
<p>Share Background Reports and seek Regional Council Directions on: Housing, Intensification, Employment, Forecast and Land Needs, Natural Heritage System and Watershed Planning</p> <p>Provide updates on consultation activities</p>		<p>Seek Regional Council Directions and Endorsement on: the Strategies and Draft Regional Official Plan Policies</p> <p>Provide updates on the Infrastructure Master Plans</p>		<p>Seek Regional Council Directions on: Climate Change Policies and the Forecast and Land Needs</p> <p>Provide updates on the Fiscal Impact Analysis</p> <p>Draft ROP Draft Vision released for Council and public input</p>	<p>ROP Adoption Final Vision</p>

CONSULTATION & ENGAGEMENT

CONSULTATION AND COORDINATION

- Regional and Local Councils, Committees and Staff
- Indigenous Communities
- The Public and Stakeholders
- Boards and Agencies
- Landowners and the Industry



ENGAGEMENT OPPORTUNITIES

- Education videos
- Photo contests
- Interactive mapping
- Walking tours
- Online conferencing
- Public open houses
- Online surveys and social media



Have Your Say

YOUR COMMUNITY, YOUR IDEAS, YOUR FUTURE.

futureyork@york.ca



QUESTIONS/DISCUSSION

For more information

Paul Freeman, Chief Planner

York Region, Corporate Services Department

Paul.Freeman@york.ca

1-877-464-9675 ext. 71534