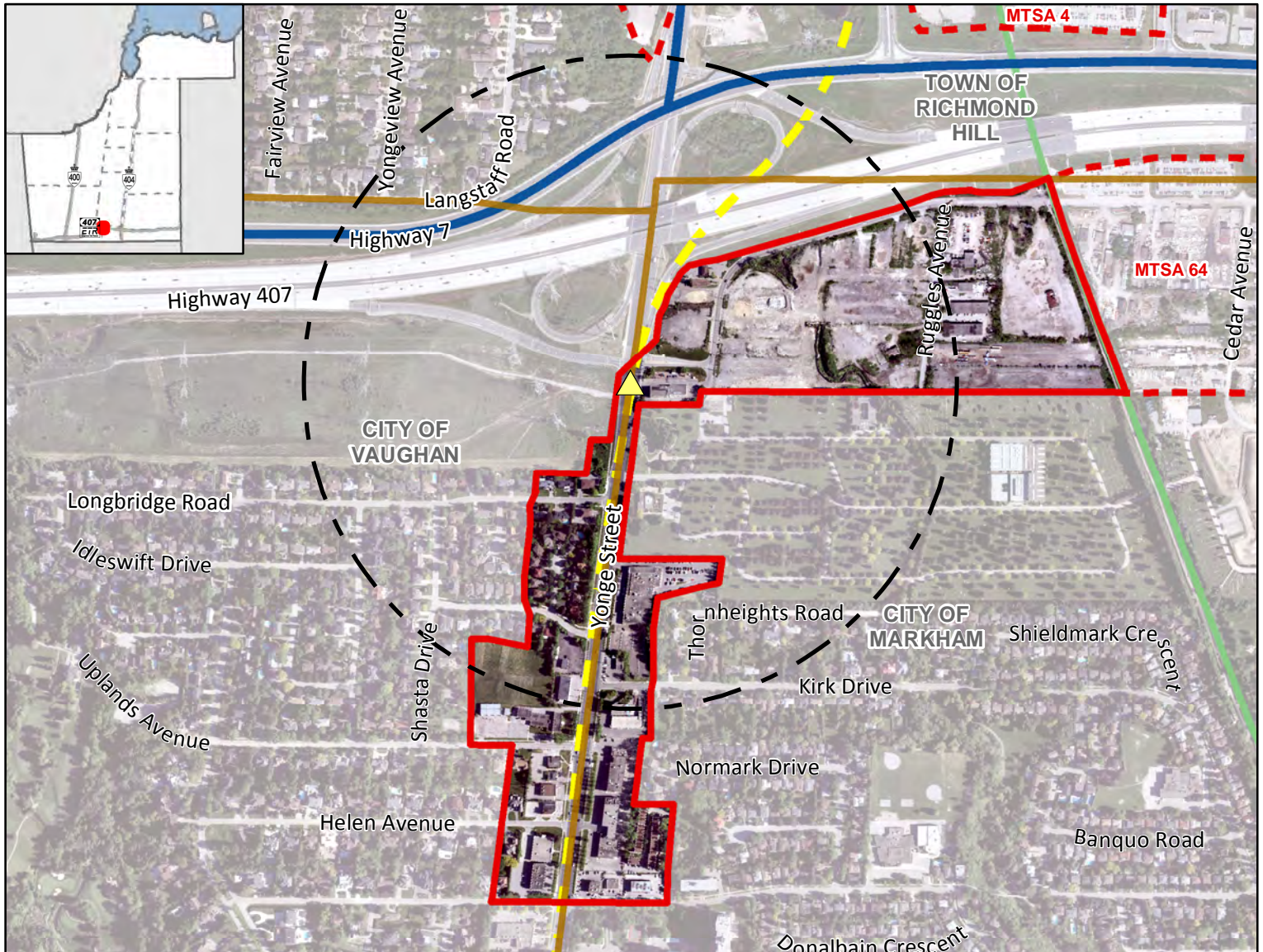


Langstaff/Longbridge Subway Station

On Yonge Subway Extension Corridor

Near Longbridge Road and Yonge Street, Vaughan/Markham



Legend

Major Transit Station

- Additional Subway
- 500m Radius
- Draft MTSA Boundary
- Adjacent Draft MTSA Boundary

Priority Transit Corridors

- BRT
- Other Transit Lines
- Subway

Base Map Information

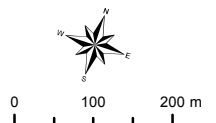
- Local Municipal Boundary

**Langstaff/
Longbridge
Subway Station**
Gross Area:
 33.31 ha

Density (People & Jobs per Hectare) ¹



Population/Job Split ²



The Regional Municipality of York
 Corporate Services,
 Planning and Economic Development
 March 2019

Data © Queen's Printer for
 Ontario 2003-2019
 See York.ca for disclaimer information.

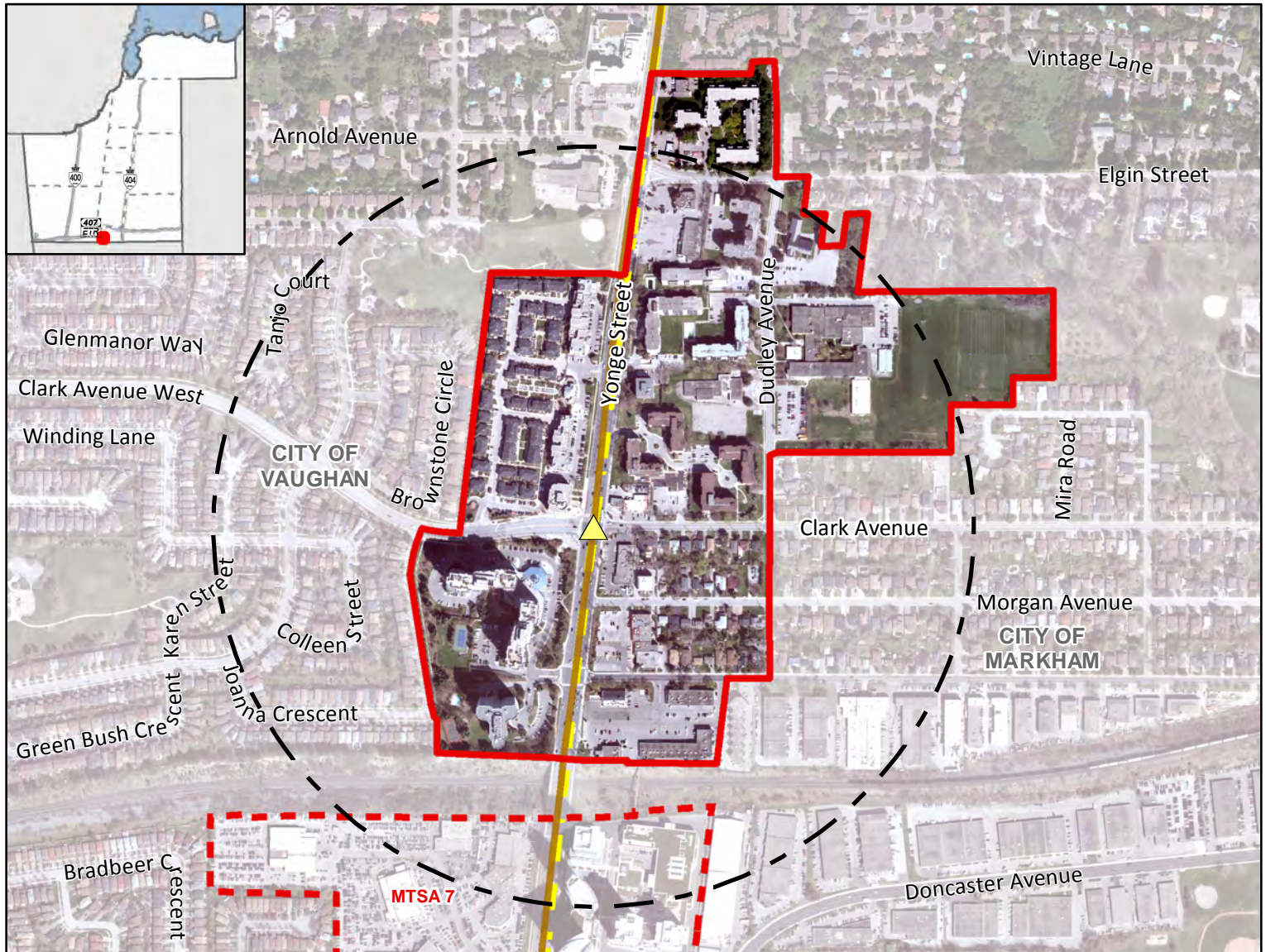
¹ Values are rounded to the nearest 5 People & Jobs per Hectare

² Values are rounded to the nearest 5%

Clark Subway Station

On Yonge Subway Extension Corridor

Near Clark Avenue and Yonge Street, Vaughan/Markham



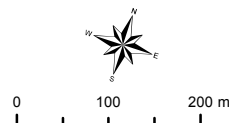
Legend

- Major Transit Station**
 - Yellow triangle: Additional Subway
- 500m Radius**
 - Red outline: Draft MTSA Boundary
 - Dashed red outline: Adjacent Draft MTSA Boundary
- Other Transit Lines**
 - Yellow line: Subway
- Local Municipal Boundary**
 - Black line: Local Municipal Boundary

Clark Subway Station
Gross Area:
 39.10 ha



Population/Job Split 2



York Region

The Regional Municipality of York
 Corporate Services,
 Planning and Economic Development
 March 2019

Data © Queen's Printer for
 Ontario 2003-2019
 See York.ca for disclaimer information.

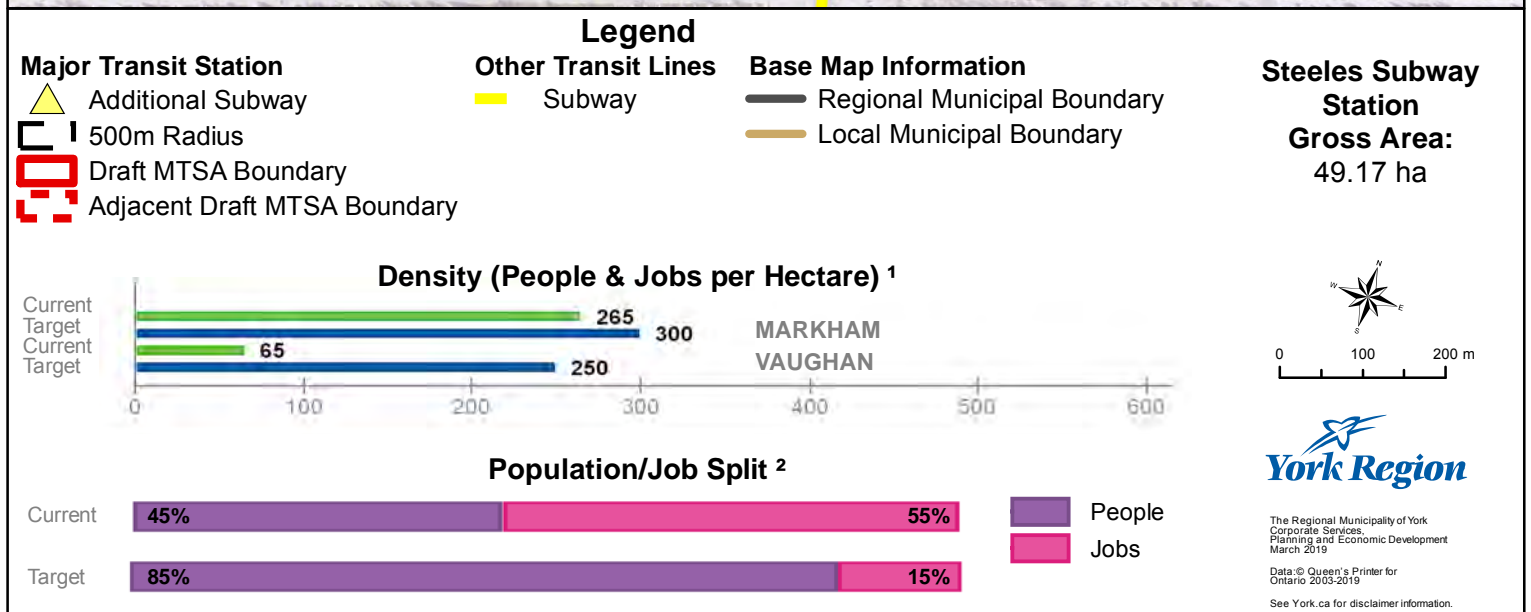
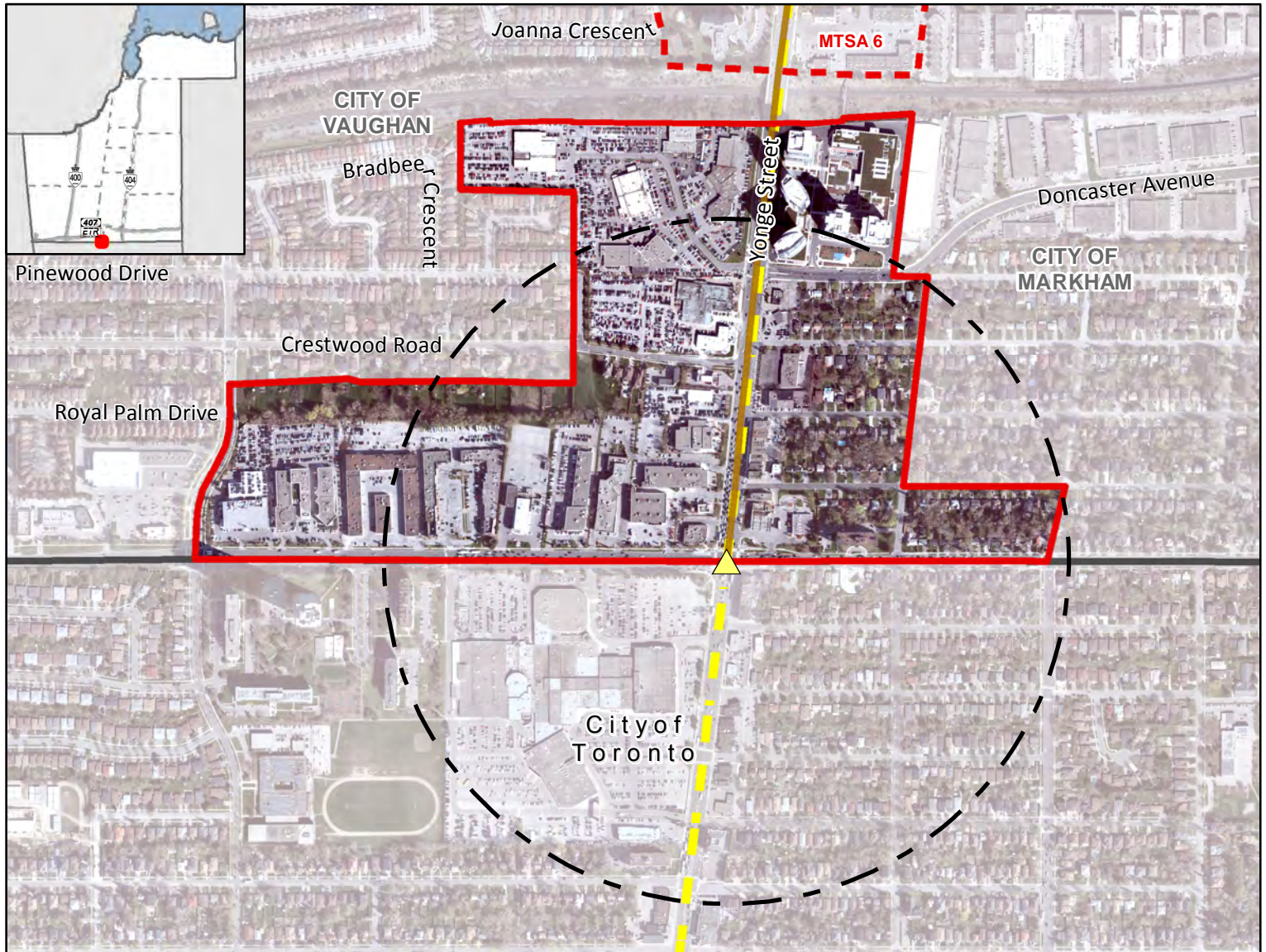
¹ Values are rounded to the nearest 5 People & Jobs per Hectare

² Values are rounded to the nearest 5%

Steeles Subway Station

On Yonge Subway Extension Corridor

Near Steeles Avenue and Yonge Street, Vaughan/Markham



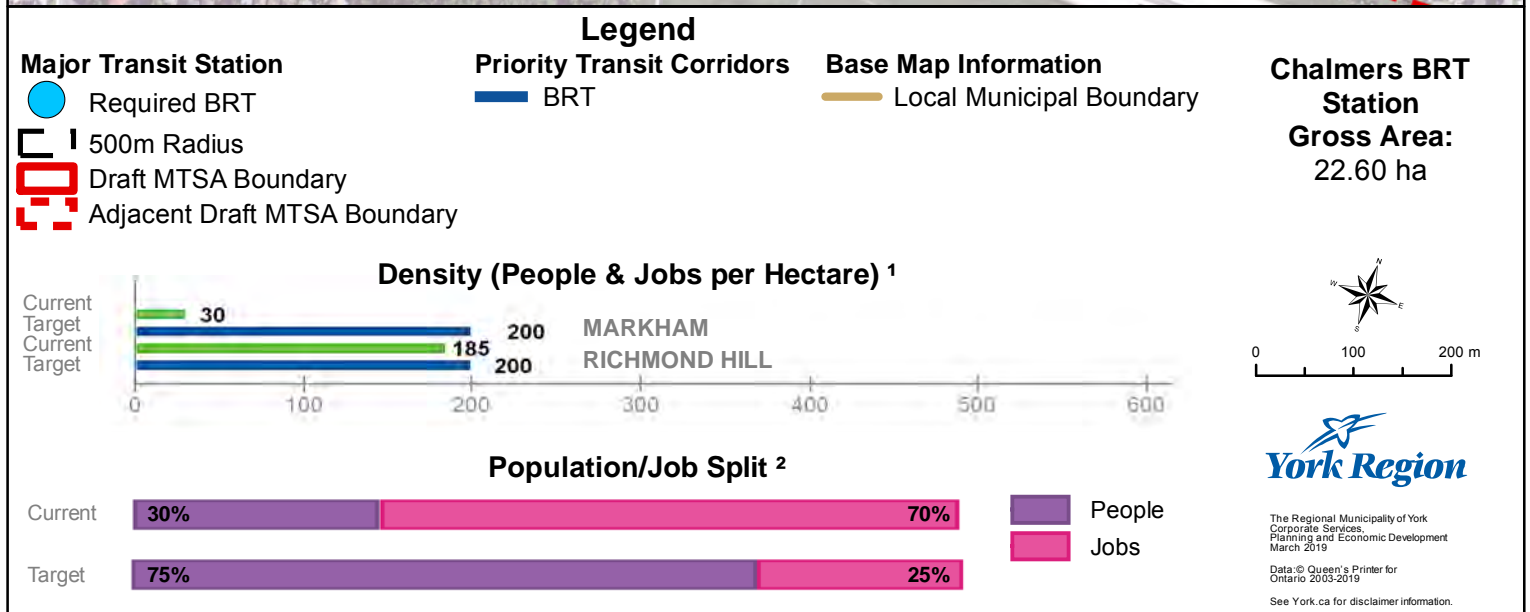
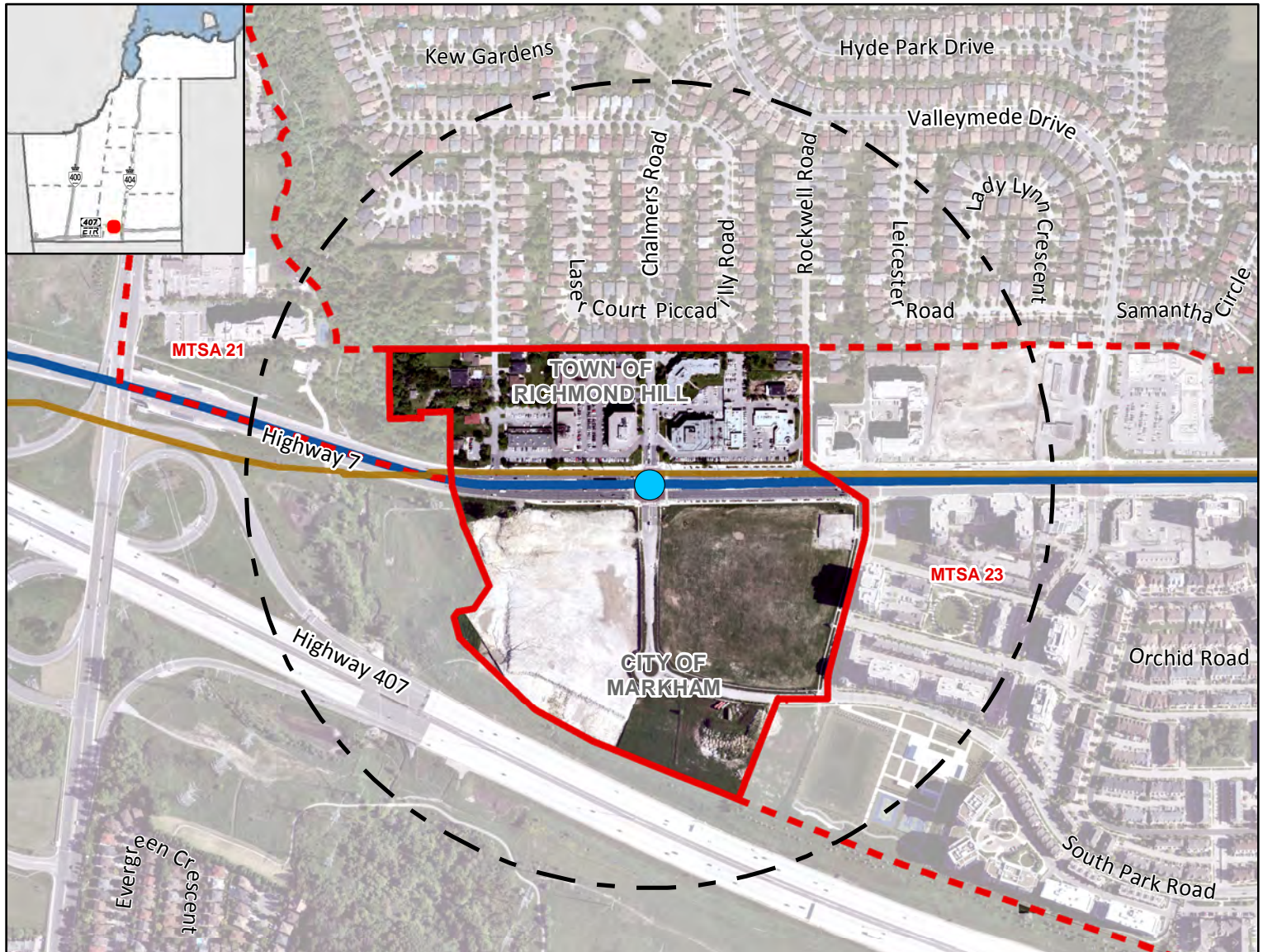
¹ Values are rounded to the nearest 5 People & Jobs per Hectare

² Values are rounded to the nearest 5%

Chalmers BRT Station

On Highway 7 BRT Corridor

Along Highway 7 at Chalmers Road/South Park Road, Markham/Richmond Hill



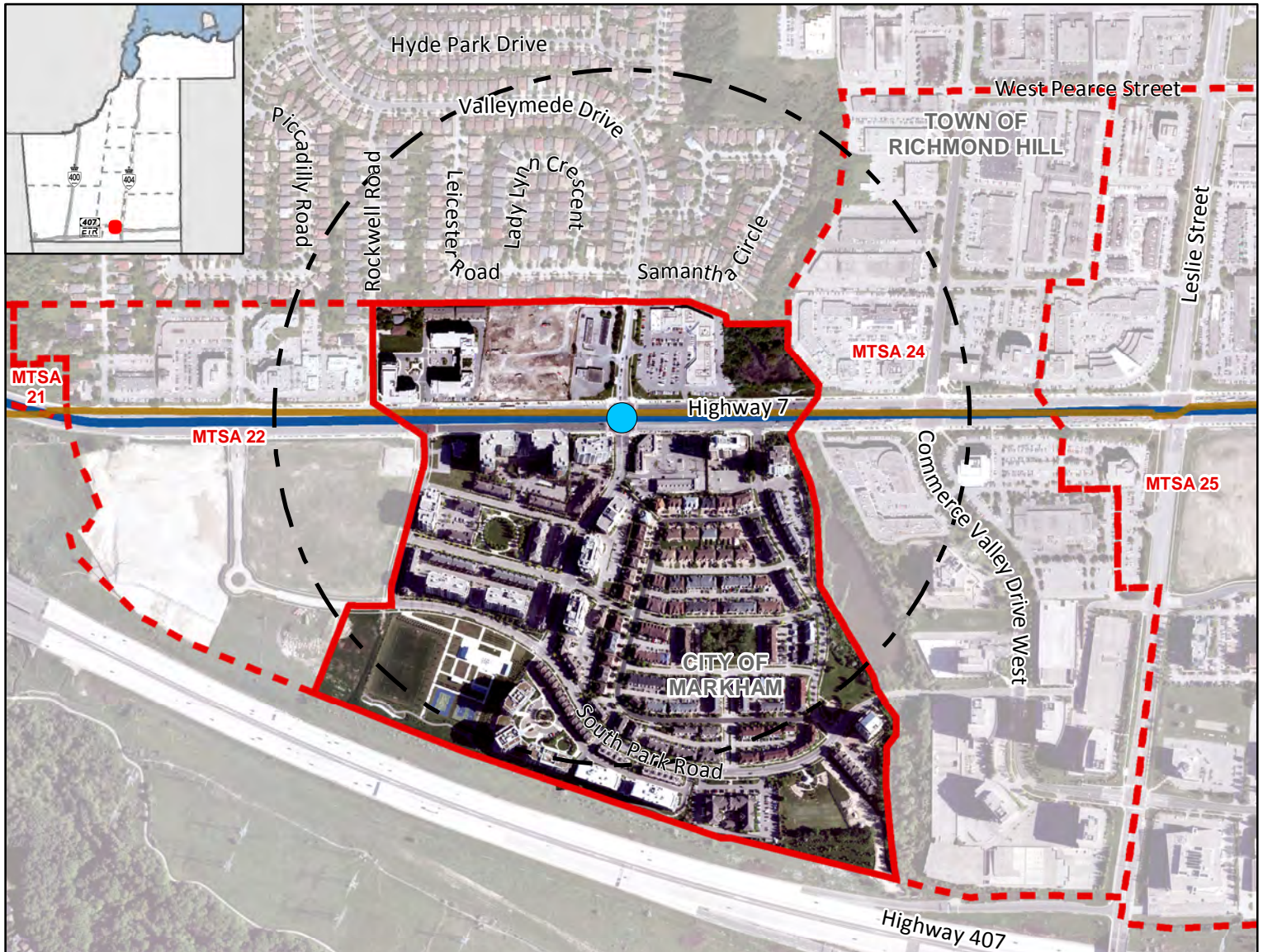
¹ Values are rounded to the nearest 5 People & Jobs per Hectare

² Values are rounded to the nearest 5%

Valleymede BRT Station

On Highway 7 BRT Corridor

Along Highway 7 at Valleymede Drive/Times Avenue, Markham/Richmond Hill



Legend

Major Transit Station

Required BRT

500m Radius

Draft MTSA Boundary

Adjacent Draft MTSA Boundary

Priority Transit Corridors

BRT

Base Map Information

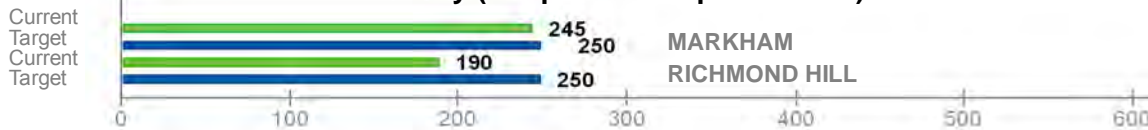
Local Municipal Boundary

Valleymede BRT Station

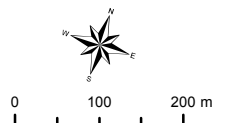
Gross Area:

47.07 ha

Density (People & Jobs per Hectare) ¹



Population/Job Split ²



York Region

The Regional Municipality of York
 Corporate Services,
 Planning and Economic Development
 March 2019

Data © Queen's Printer for
 Ontario 2003-2019
 See York.ca for disclaimer information.

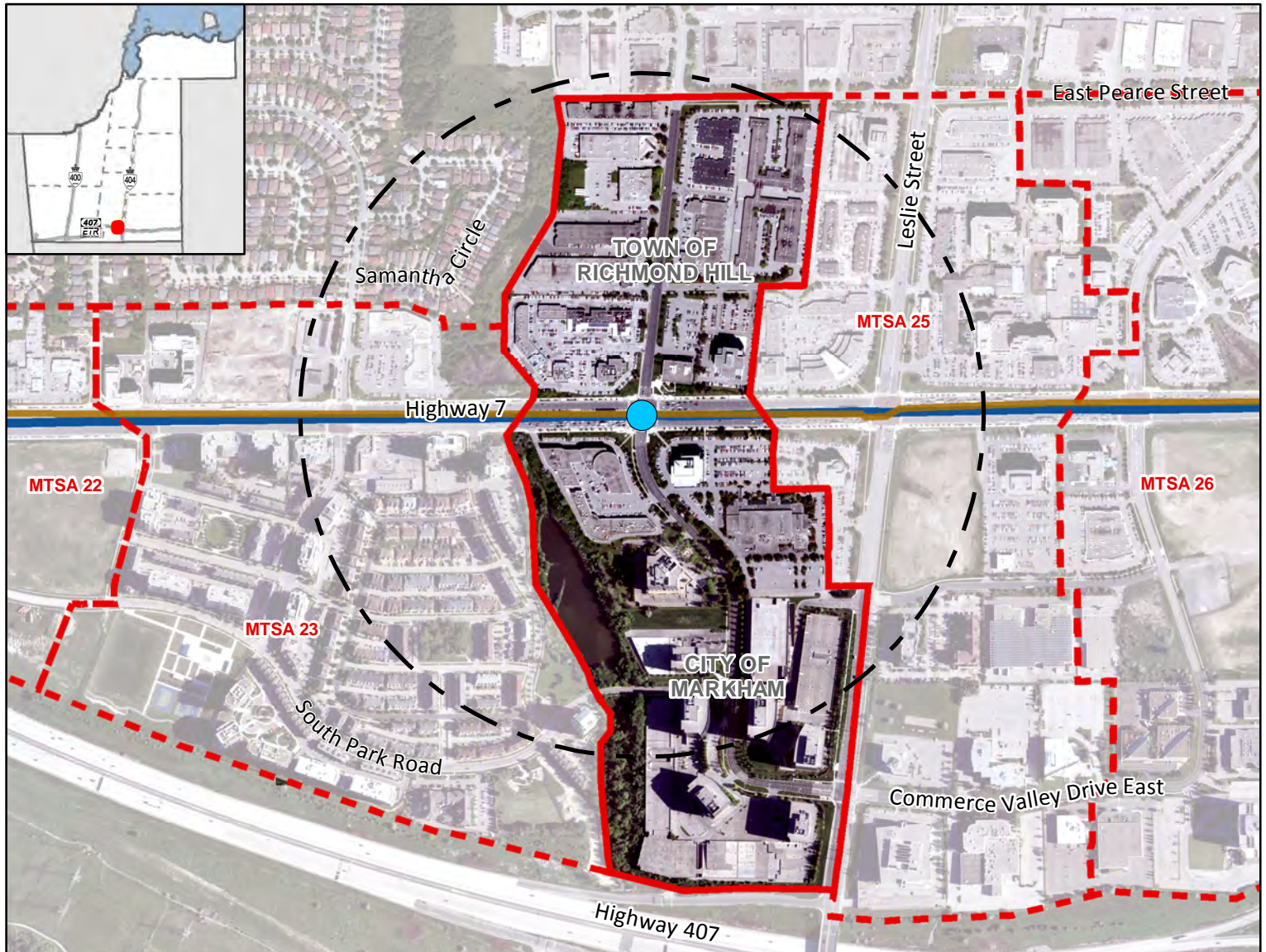
¹ Values are rounded to the nearest 5 People & Jobs per Hectare

² Values are rounded to the nearest 5%

West Beaver Creek BRT Station

On Highway 7 BRT Corridor

Along Highway 7 at West Beaver Creek Rd/Commerce Valley Dr W, Markham/Richmond Hill



Legend

Major Transit Station

- Required BRT
- 500m Radius
- Draft MTSA Boundary
- Adjacent Draft MTSA Boundary

Priority Transit Corridors

— BRT

Base Map Information

— Local Municipal Boundary

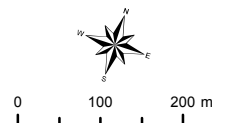
West Beaver Creek BRT Station

Gross Area:
44.36 ha

Density (People & Jobs per Hectare) ¹



Population/Job Split ²



York Region

The Regional Municipality of York
 Corporate Services,
 Planning and Economic Development
 March 2019

Data © Queen's Printer for
 Ontario 2003-2019

See York.ca for disclaimer information.

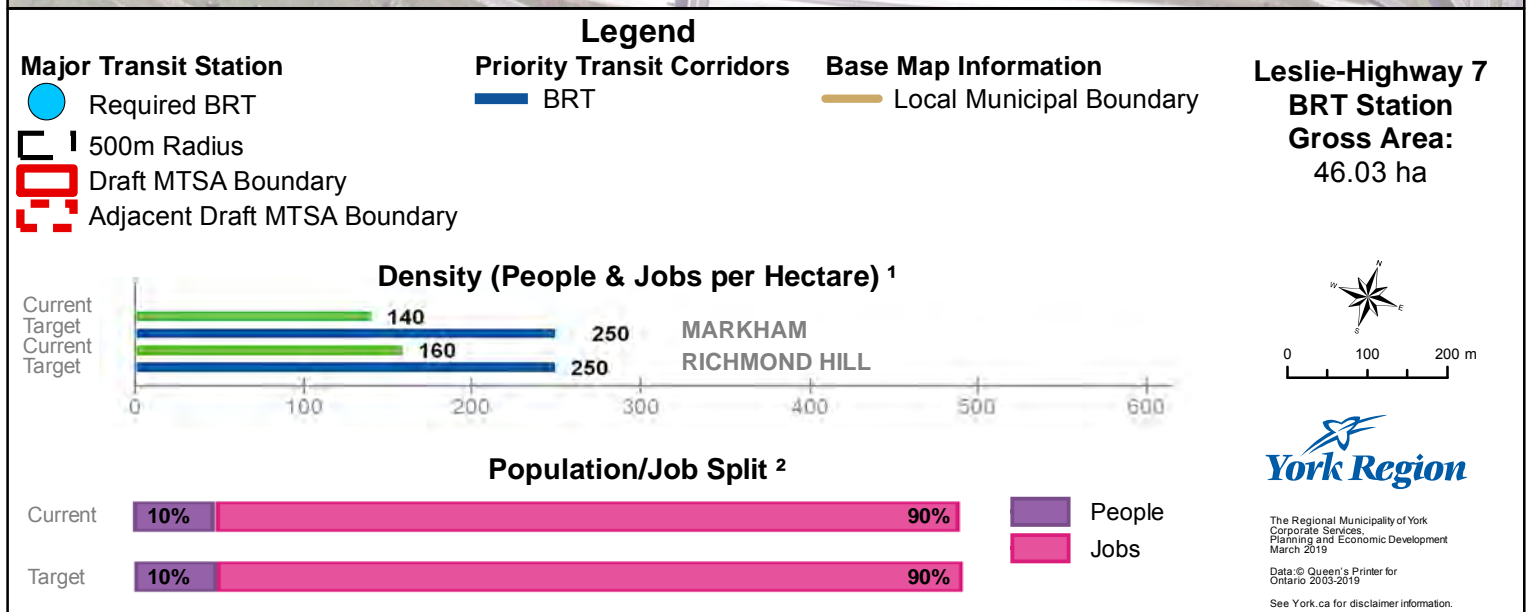
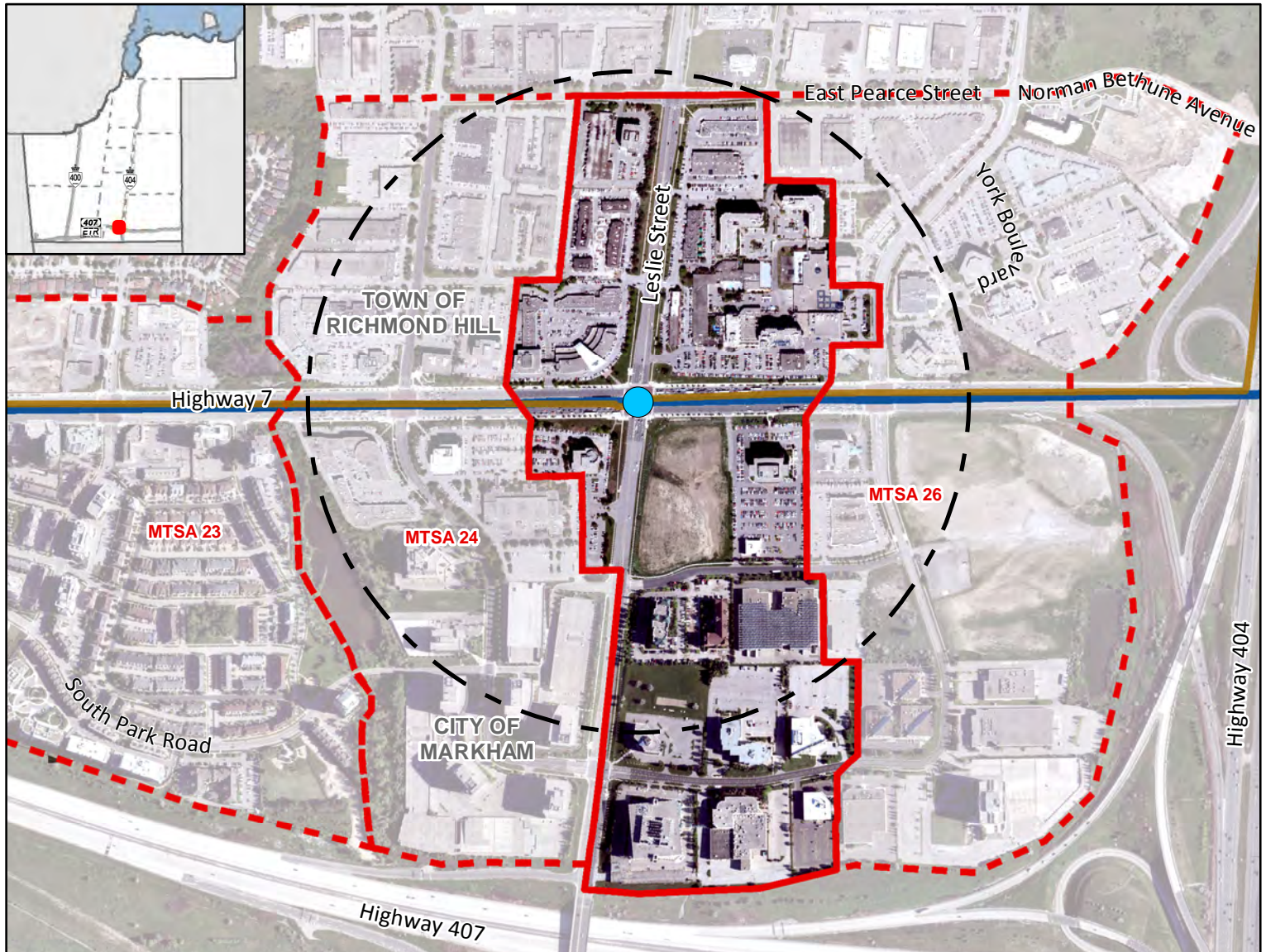
¹ Values are rounded to the nearest 5 People & Jobs per Hectare

² Values are rounded to the nearest 5%

Leslie-Highway 7 BRT Station

On Highway 7 BRT Corridor

Along Highway 7 at Leslie Street, Markham/Richmond Hill



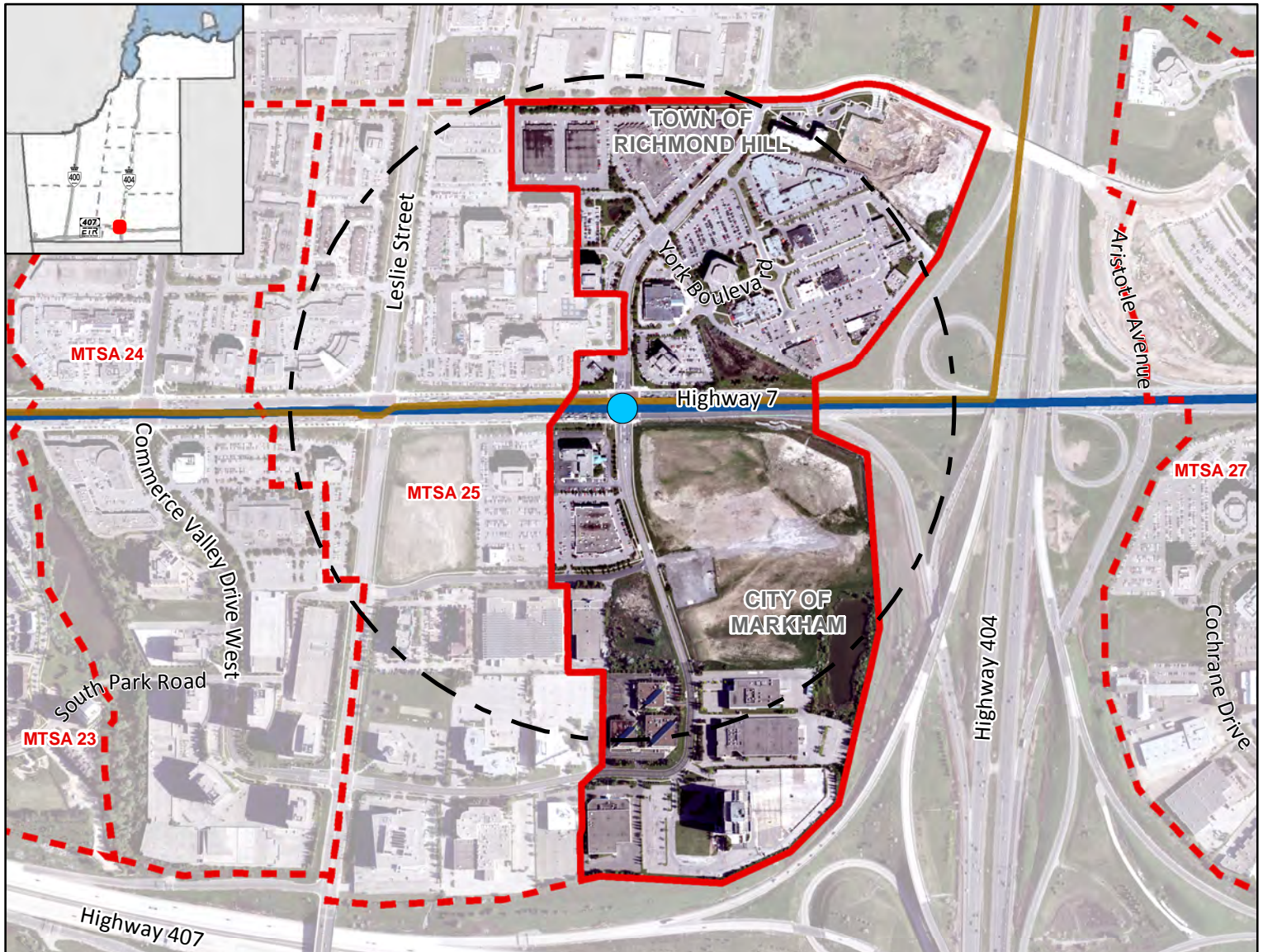
¹ Values are rounded to the nearest 5 People & Jobs per Hectare

² Values are rounded to the nearest 5%

East Beaver Creek BRT Station

On Highway 7 BRT Corridor

Along Highway 7 at East Beaver Creek Rd/Commerce Valley Dr E, Markham/Richmond Hill



Legend

Major Transit Station

- Required BRT
- 500m Radius
- Draft MTSA Boundary
- Adjacent Draft MTSA Boundary

Priority Transit Corridors

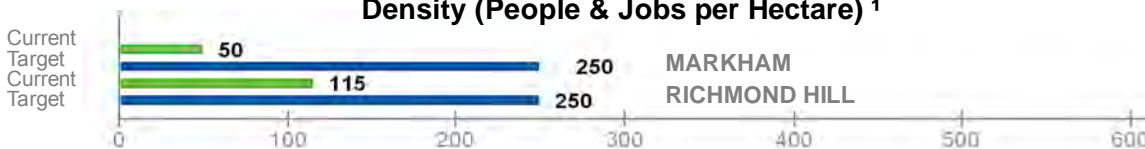
- BRT

Base Map Information

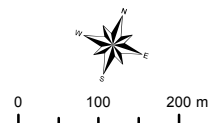
- Local Municipal Boundary

East Beaver Creek BRT Station
Gross Area:
 54.61 ha

Density (People & Jobs per Hectare) ¹



Population/Job Split ²



The Regional Municipality of York
 Corporate Services,
 Planning and Economic Development
 March 2019

Data © Queen's Printer for
 Ontario 2003-2019
 See York.ca for disclaimer information.

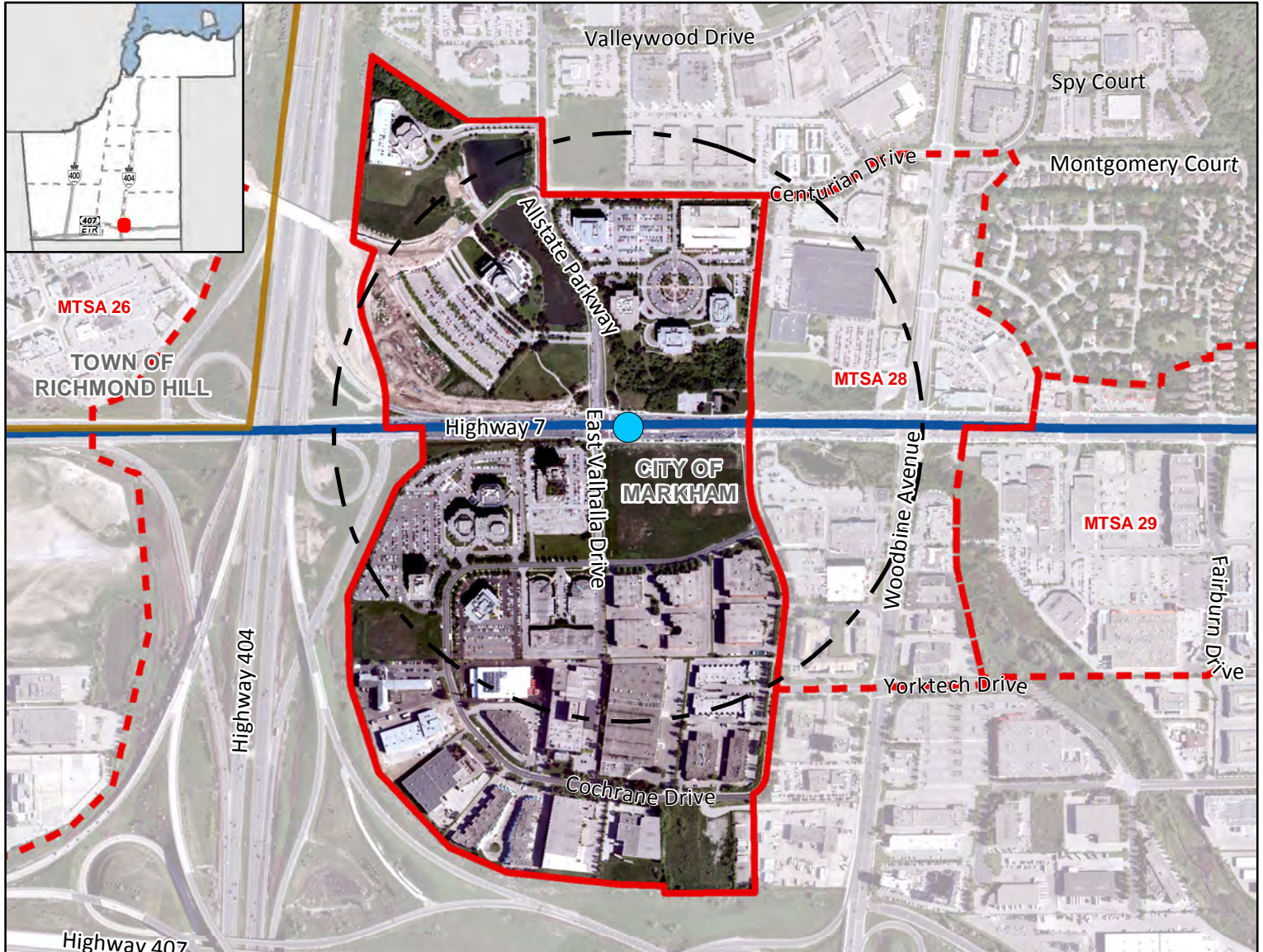
¹ Values are rounded to the nearest 5 People & Jobs per Hectare

² Values are rounded to the nearest 5%

Allstate Parkway BRT Station

On Highway 7 BRT Corridor

Along Highway 7 at Allstate Parkway/East Valhalla Drive, Markham



Legend

Major Transit Station

- Required BRT
- 500m Radius
- Draft MTSA Boundary
- Adjacent Draft MTSA Boundary

Priority Transit Corridors

— BRT

Base Map Information

— Local Municipal Boundary

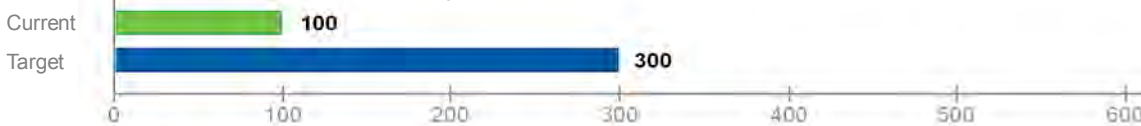
Allstate Parkway

BRT Station

Gross Area:

80.42 ha

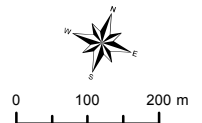
Density (People & Jobs per Hectare) ¹



Population/Job Split ²



■ People
■ Jobs



York Region

The Regional Municipality of York
 Corporate Services,
 Planning and Economic Development
 March 2019

Data © Queen's Printer for
 Ontario 2003-2019
 See York.ca for disclaimer information.

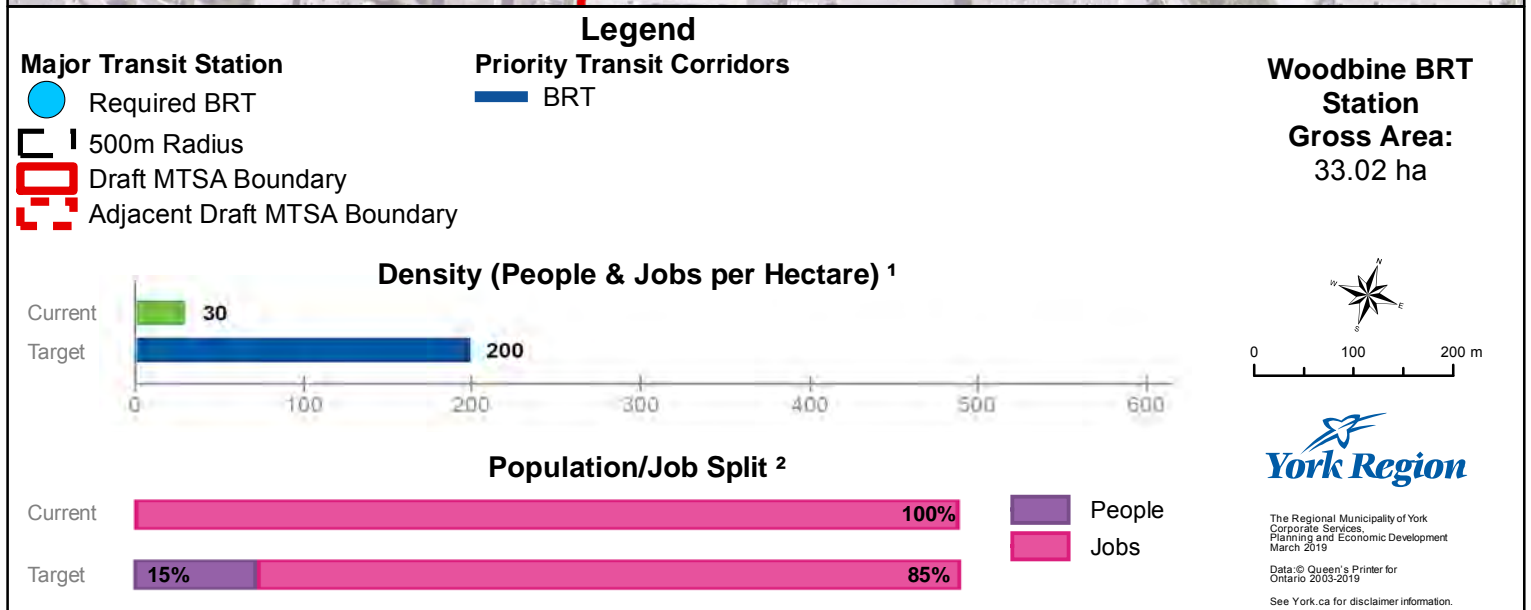
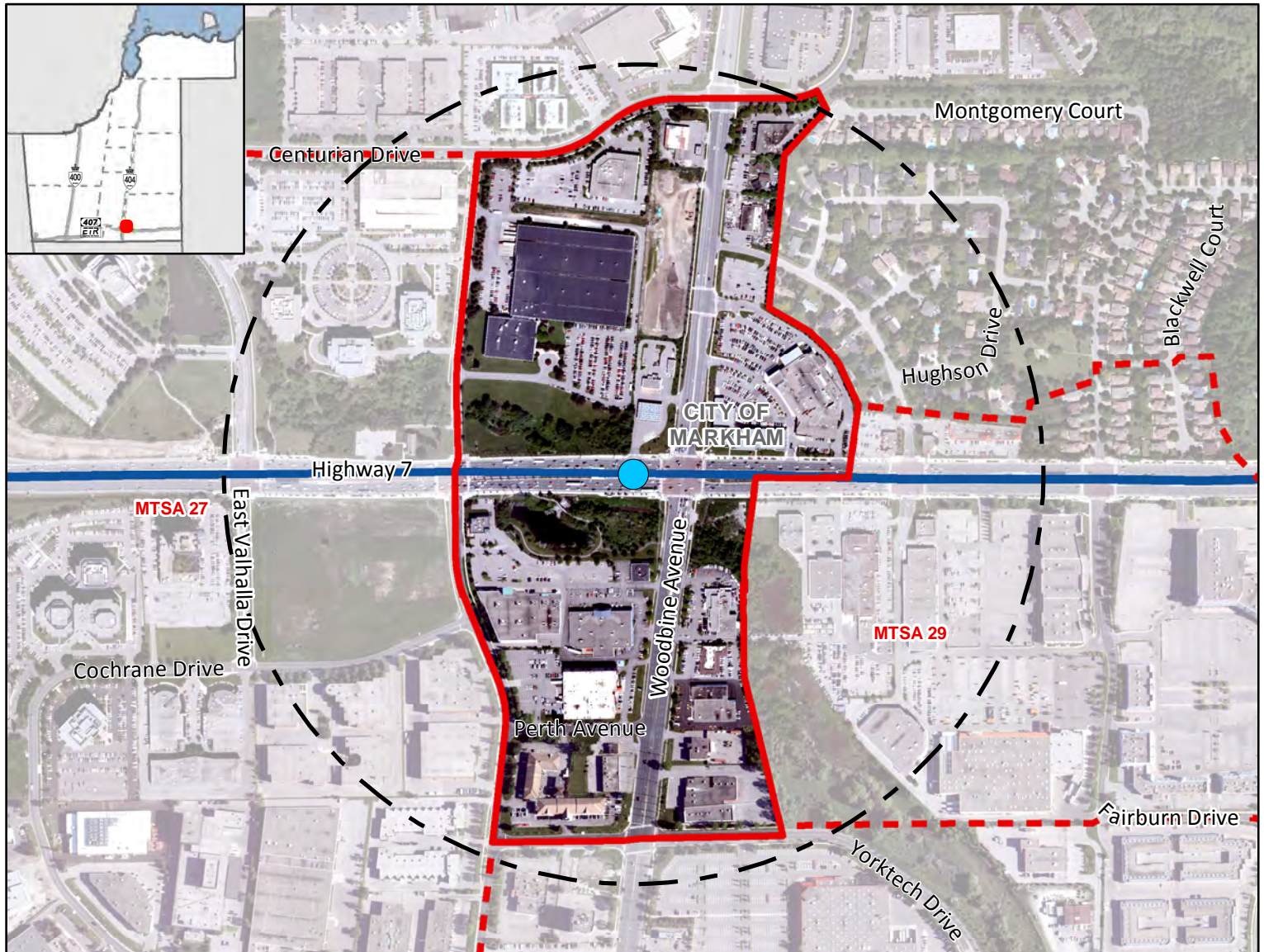
¹ Values are rounded to the nearest 5 People & Jobs per Hectare

² Values are rounded to the nearest 5%

Woodbine BRT Station

On Highway 7 BRT Corridor

Along Highway 7 at Woodbine Avenue, Markham



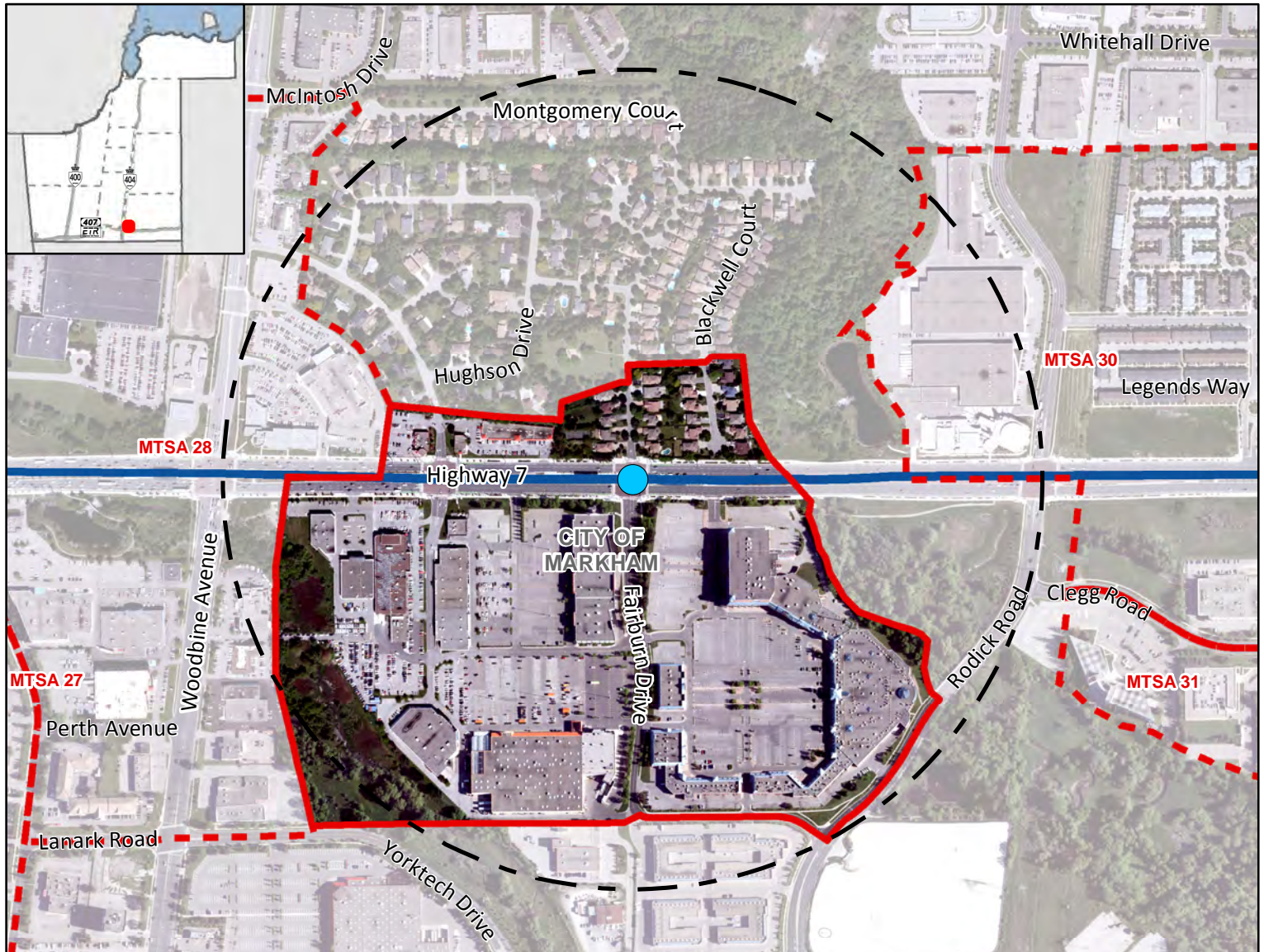
¹ Values are rounded to the nearest 5 People & Jobs per Hectare

² Values are rounded to the nearest 5%

Montgomery BRT Station

On Highway 7 BRT Corridor

Along Highway 7 at Montgomery Court/Fairburn Drive, Markham



Legend

Major Transit Station

● Required BRT

□ 500m Radius

▭ Draft MTSA Boundary

▭ Adjacent Draft MTSA Boundary

Priority Transit Corridors

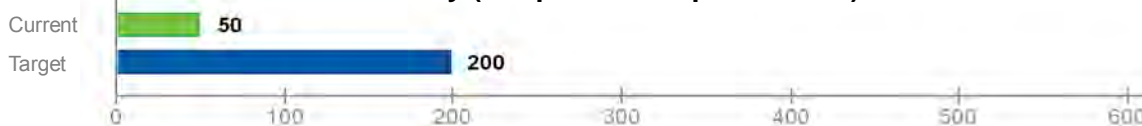
— BRT

Montgomery BRT Station

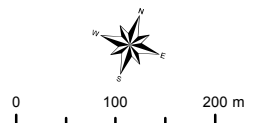
Gross Area:

34.89 ha

Density (People & Jobs per Hectare) ¹



Population/Job Split ²



York Region

The Regional Municipality of York
 Corporate Services,
 Planning and Economic Development
 March 2019

Data © Queen's Printer for
 Ontario 2003-2019
 See York.ca for disclaimer information.

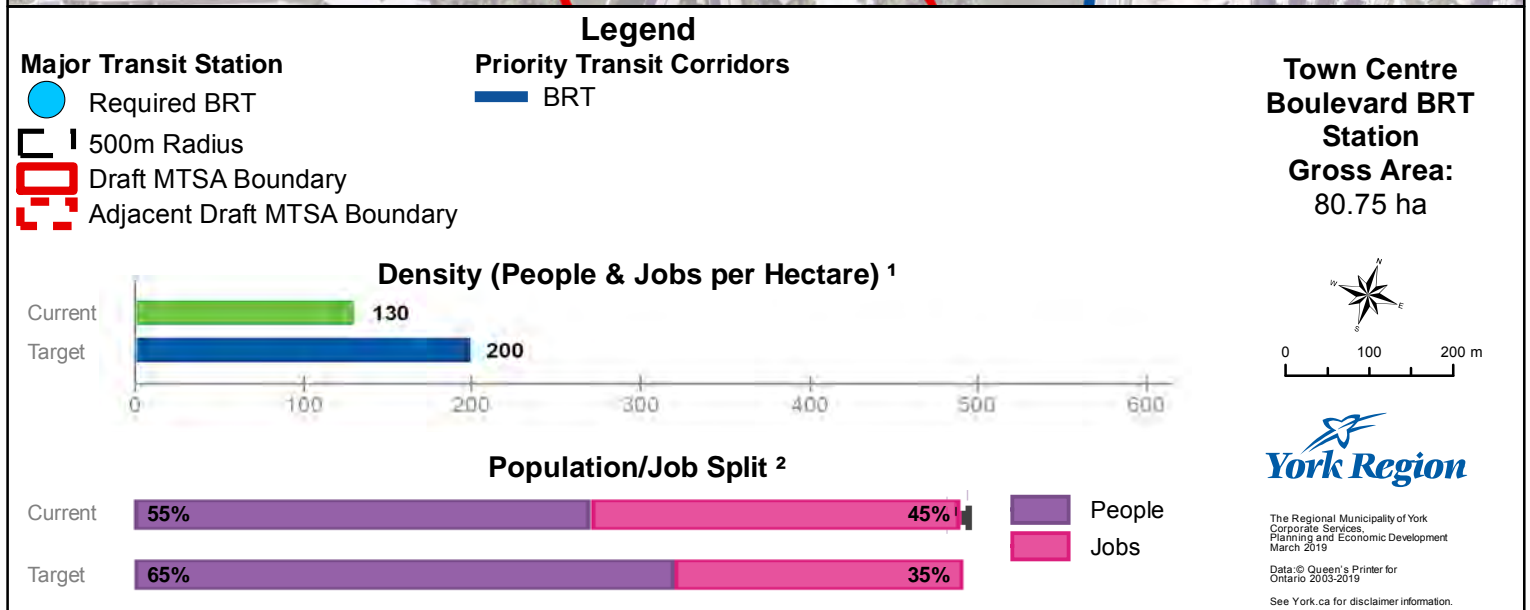
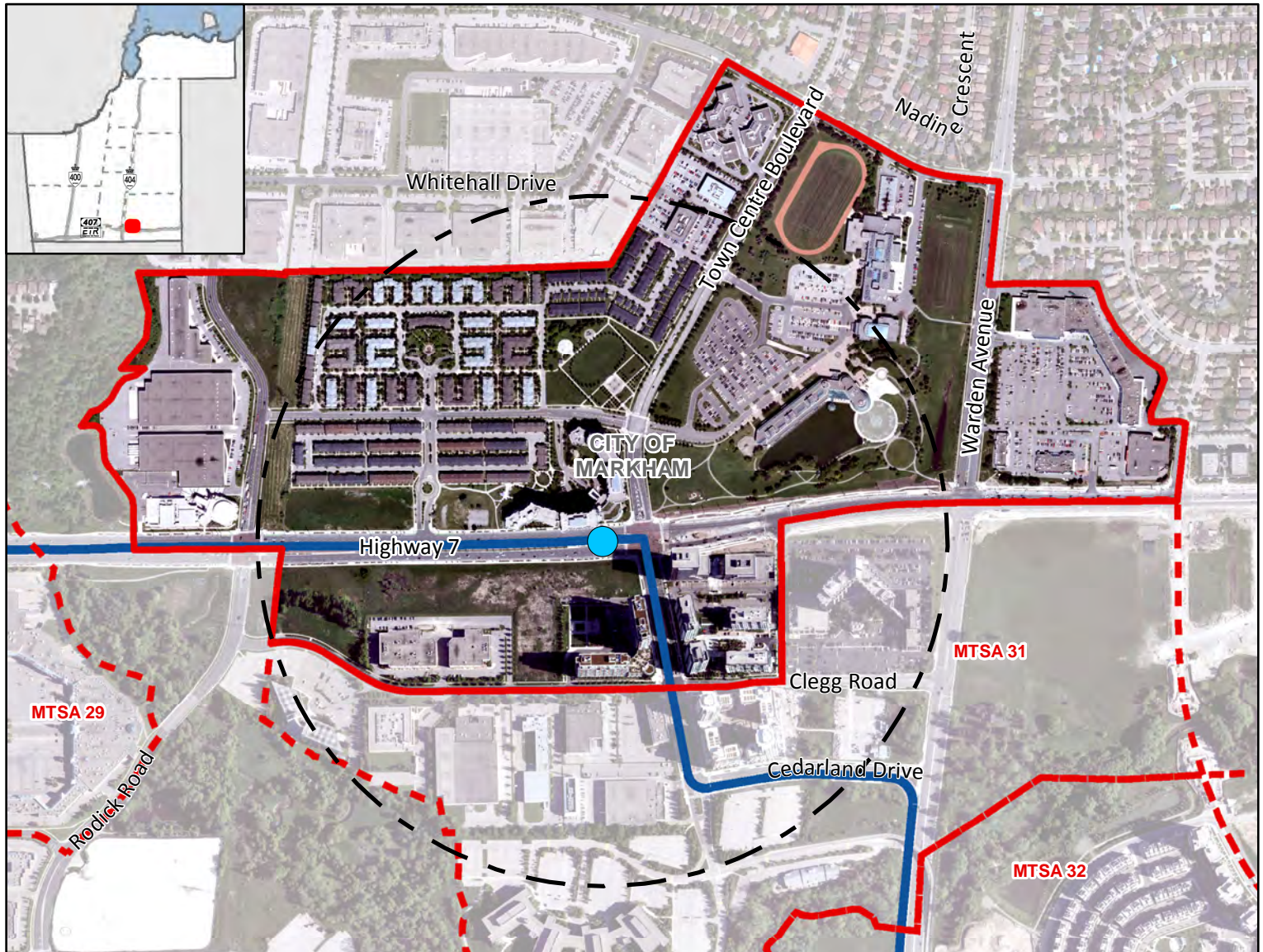
¹ Values are rounded to the nearest 5 People & Jobs per Hectare

² Values are rounded to the nearest 5%

Town Centre Boulevard BRT Station

On Highway 7 BRT Corridor

Along Highway 7 at Town Centre Boulevard, Markham



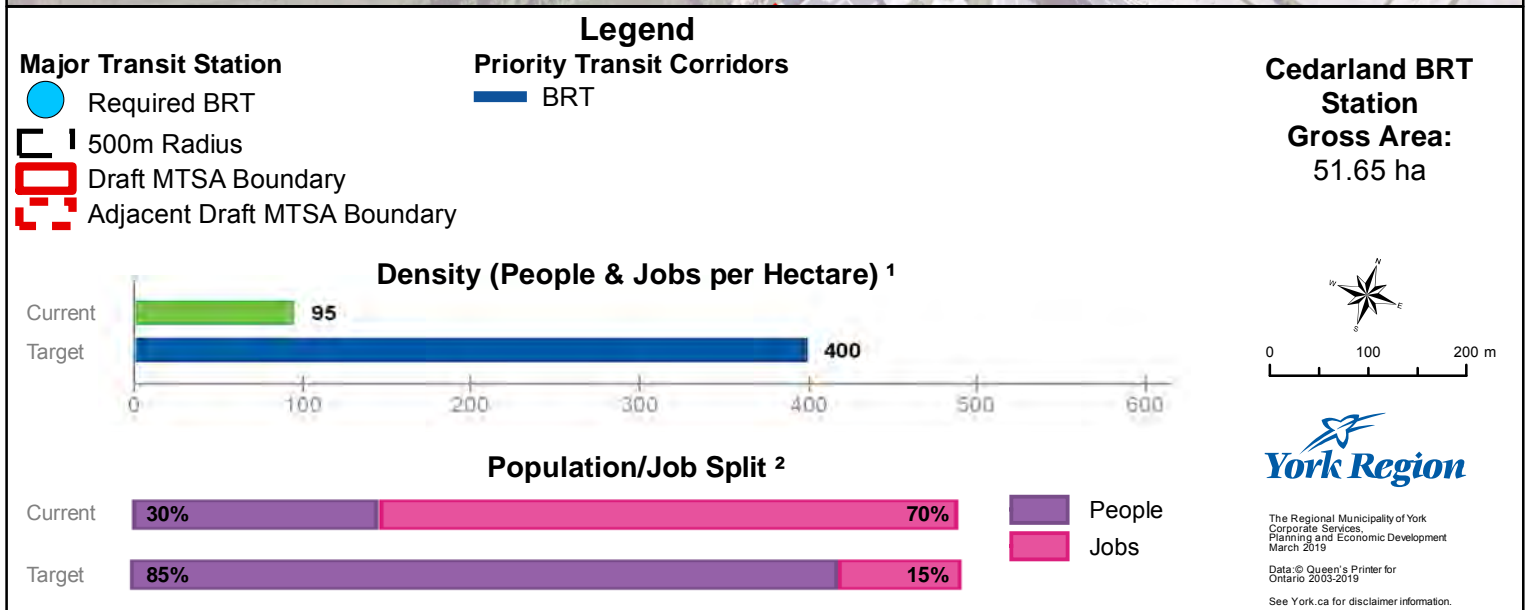
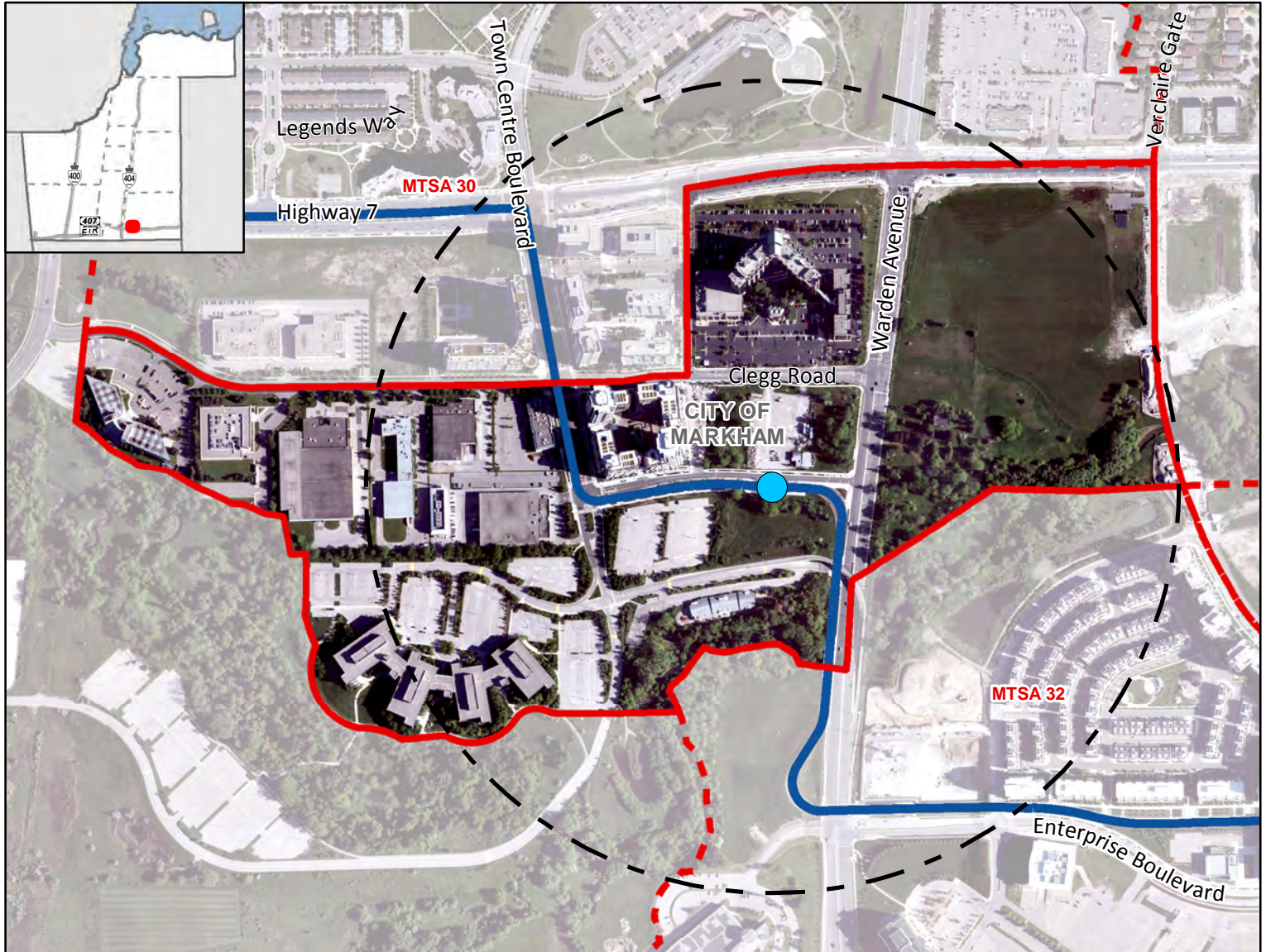
¹ Values are rounded to the nearest 5 People & Jobs per Hectare

² Values are rounded to the nearest 5%

Cedarland BRT Station

On Highway 7 BRT Corridor

Along Cedarland Drive at Warden Avenue, Markham



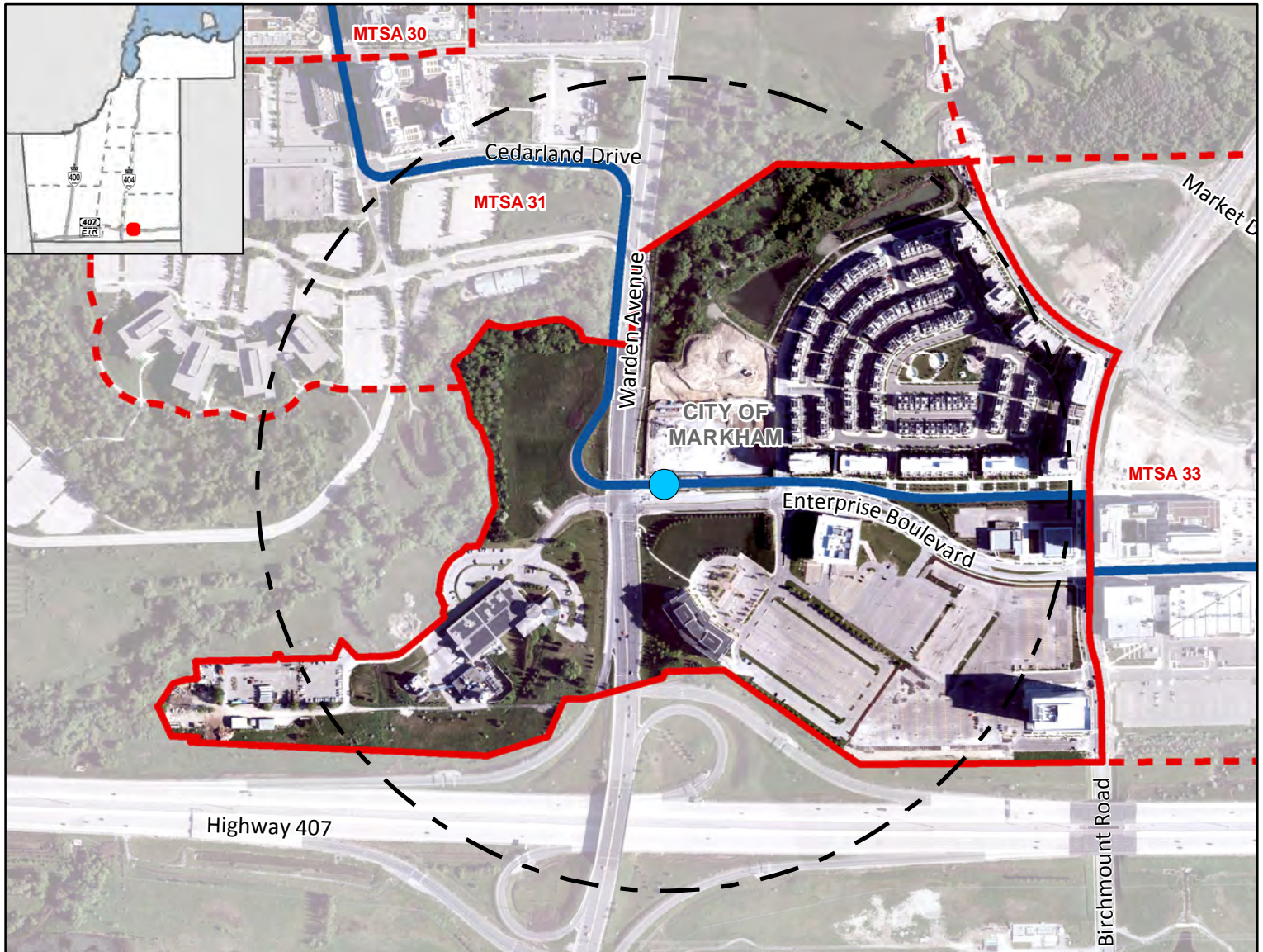
¹ Values are rounded to the nearest 5 People & Jobs per Hectare

² Values are rounded to the nearest 5%

Warden BRT Station

On Highway 7 BRT Corridor

Along dedicated BRT road, near Enterprise Boulevard and Warden Avenue, Markham



Legend

Major Transit Station

● Required BRT

□ 500m Radius

□ Draft MTSA Boundary

□ Adjacent Draft MTSA Boundary

Priority Transit Corridors

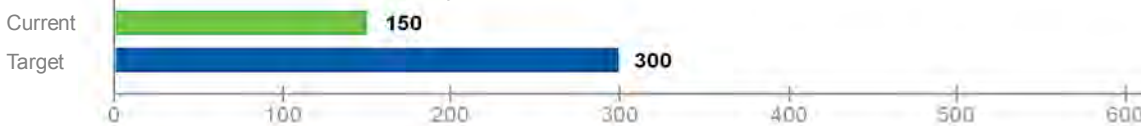
— BRT

Warden BRT Station

Gross Area:

50.52 ha

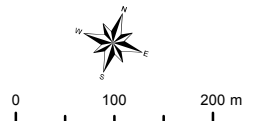
Density (People & Jobs per Hectare) ¹



Population/Job Split ²



People
Jobs



York Region

The Regional Municipality of York
 Corporate Services,
 Planning and Economic Development
 March 2019

Data © Queen's Printer for
 Ontario 2003-2019
 See York.ca for disclaimer information.

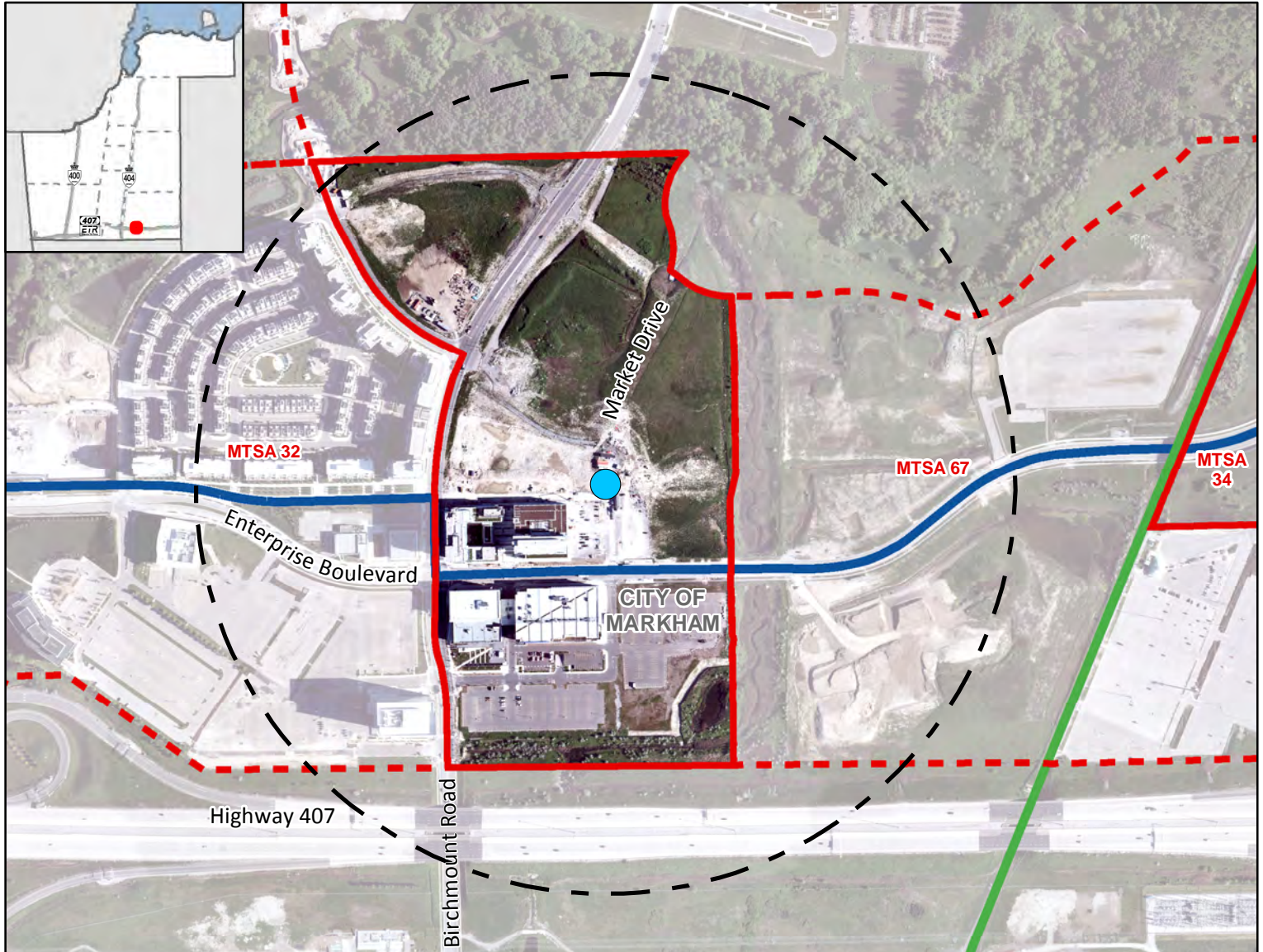
¹ Values are rounded to the nearest 5 People & Jobs per Hectare

² Values are rounded to the nearest 5%

Post BRT Station

On Highway 7 BRT Corridor

Along dedicated BRT road, north of Enterprise Boulevard and Post Road, Markham



Legend

Major Transit Station

- Required BRT
- 500m Radius
- Draft MTSA Boundary
- Adjacent Draft MTSA Boundary

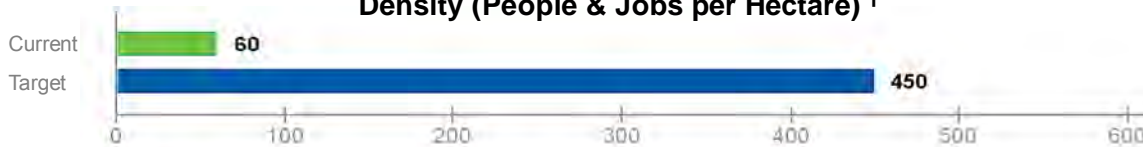
Priority Transit Corridors

- BRT
- GO Rail

Post BRT Station

Gross Area:
27.53 ha

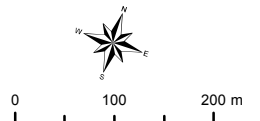
Density (People & Jobs per Hectare) ¹



Population/Job Split ²



- People
- Jobs



York Region

The Regional Municipality of York
 Corporate Services,
 Planning and Economic Development
 March 2019

Data © Queen's Printer for
 Ontario 2003-2019
 See York.ca for disclaimer information.

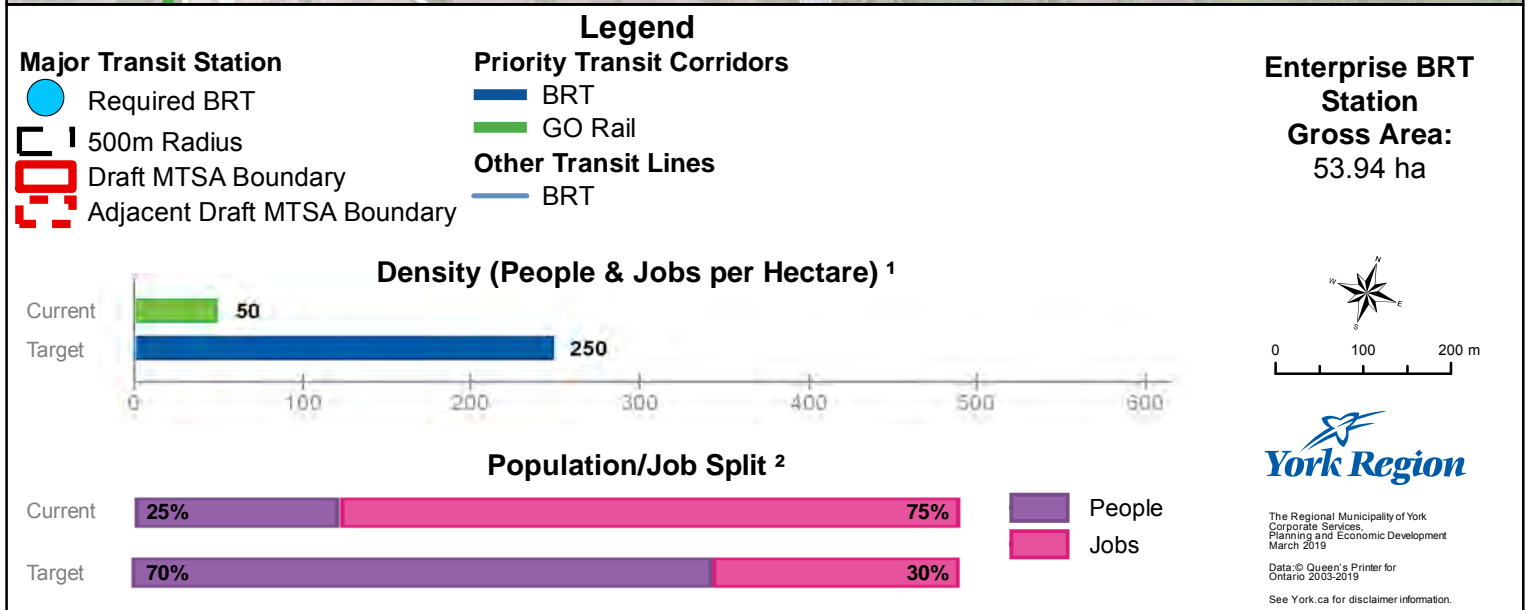
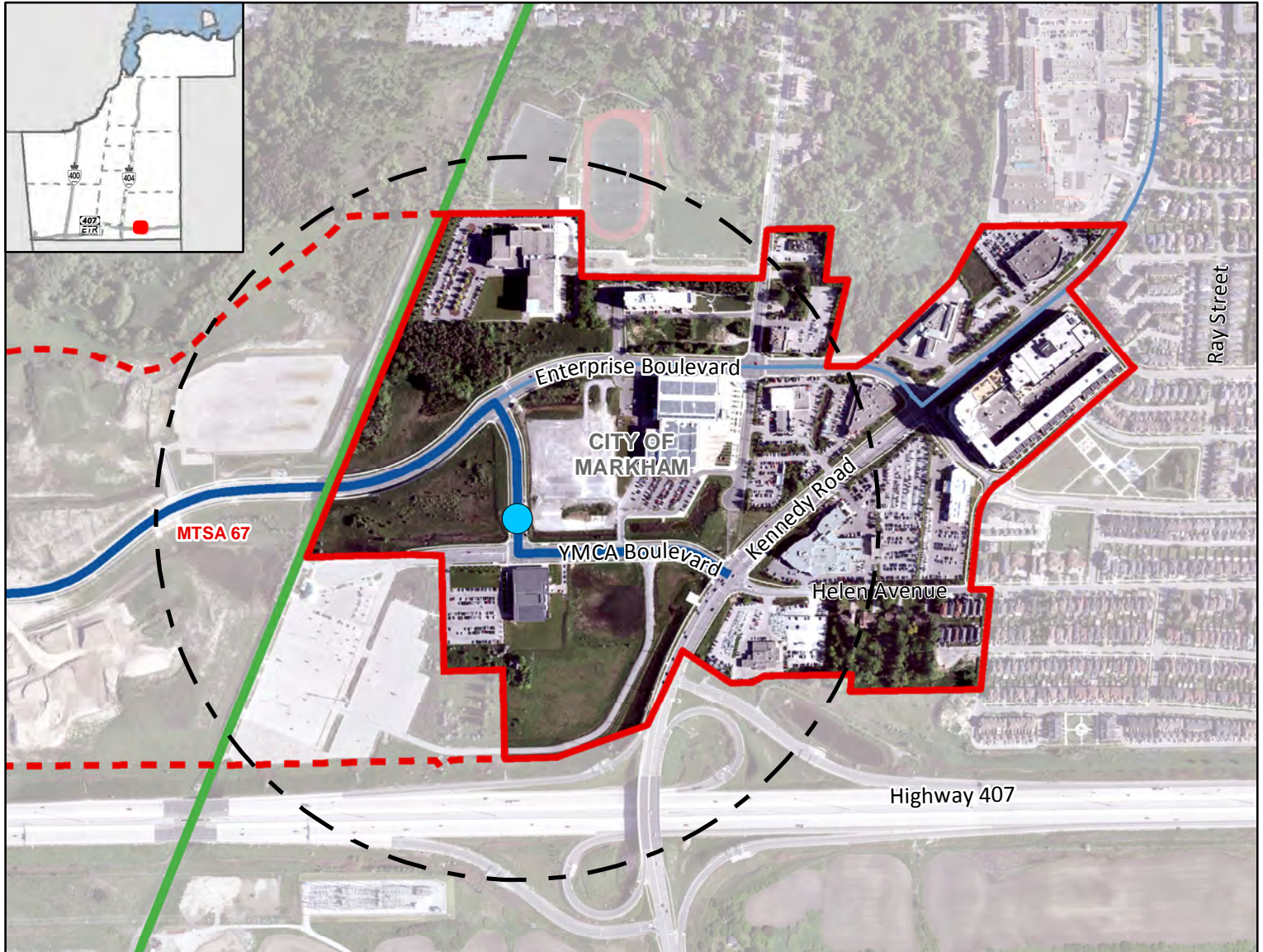
¹ Values are rounded to the nearest 5 People & Jobs per Hectare

² Values are rounded to the nearest 5%

Enterprise BRT Station

On Highway 7 BRT Corridor

Along Riva Road at YMCA Boulevard, Markham



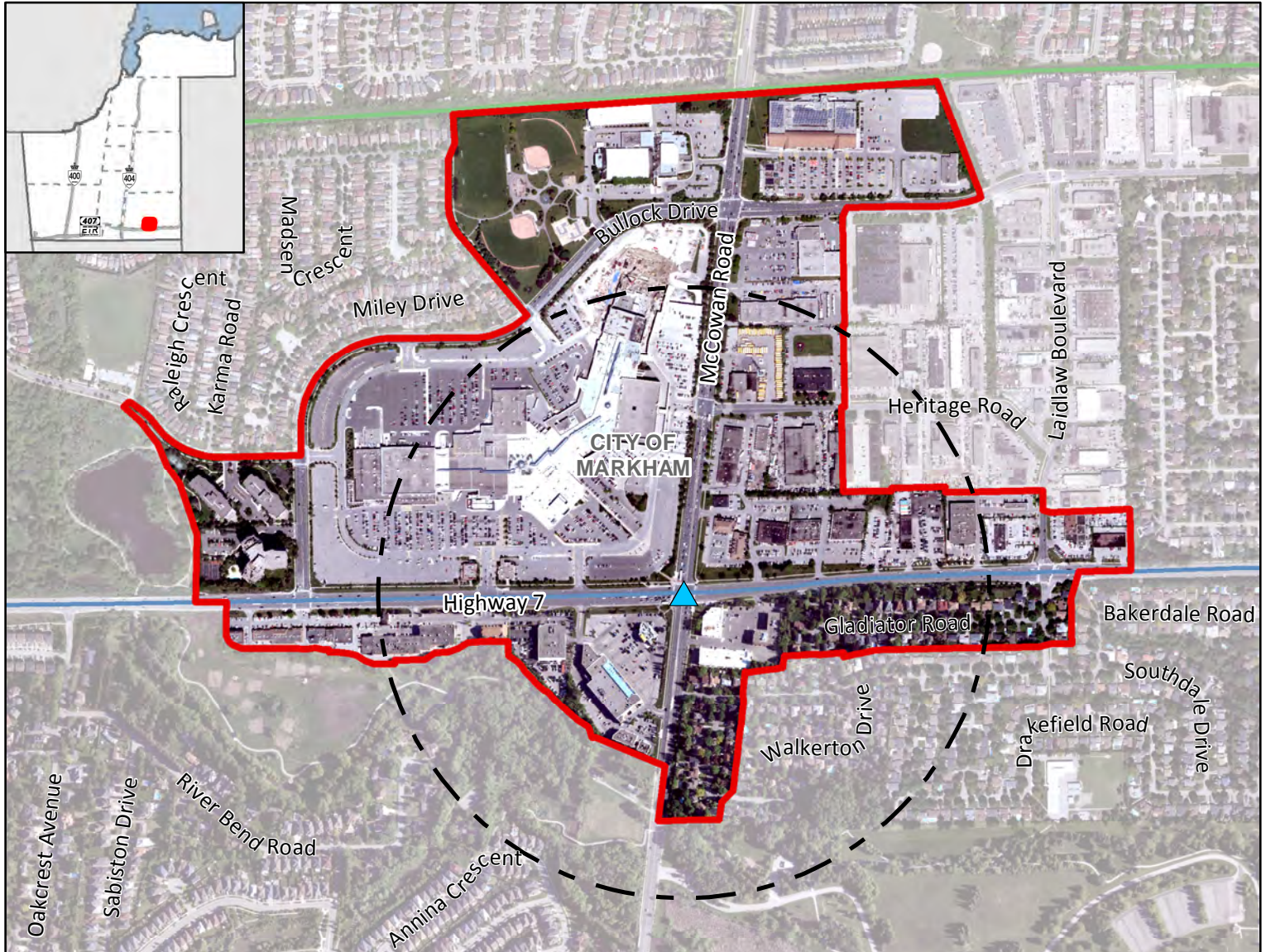
¹ Values are rounded to the nearest 5 People & Jobs per Hectare

² Values are rounded to the nearest 5%

McCowan BRT Station

On Highway 7 BRT Corridor

Along Highway 7 at McCowan Road, Markham



Legend

- Major Transit Station**
 ▲ Additional BRT
 500m Radius
 Draft MTSA Boundary

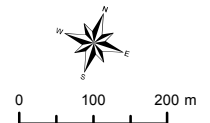
- Other Transit Lines**
 BRT
 GO Rail

McCowan BRT Station
Gross Area:
 95.09 ha

Density (People & Jobs per Hectare) ¹



Population/Job Split ²



York Region

The Regional Municipality of York
 Corporate Services,
 Planning and Economic Development
 March 2019

Data © Queen's Printer for
 Ontario 2003-2019
 See York.ca for disclaimer information.

¹ Values are rounded to the nearest 5 People & Jobs per Hectare

² Values are rounded to the nearest 5%

Cornell BRT Station

On Highway 7 BRT Corridor

Along Highway 7 at Bur Oak Avenue, Markham



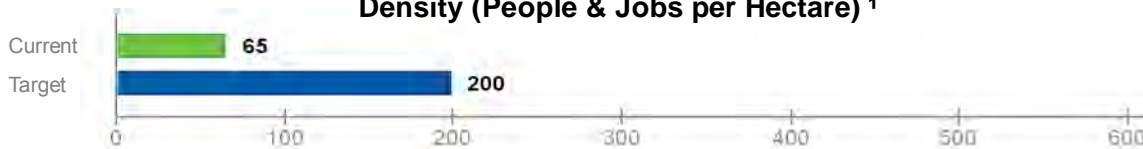
Legend

- Major Transit Station**
 ▲ Additional BRT
 [] 500m Radius
 [] Draft MTSA Boundary

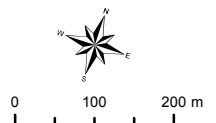
- Other Transit Lines**
 — BRT

Cornell BRT Station
Gross Area:
 100.45 ha

Density (People & Jobs per Hectare) ¹



Population/Job Split ²



York Region

The Regional Municipality of York
 Corporate Services,
 Planning and Economic Development
 March 2019

Data © Queen's Printer for
 Ontario 2003-2019
 See York.ca for disclaimer information.

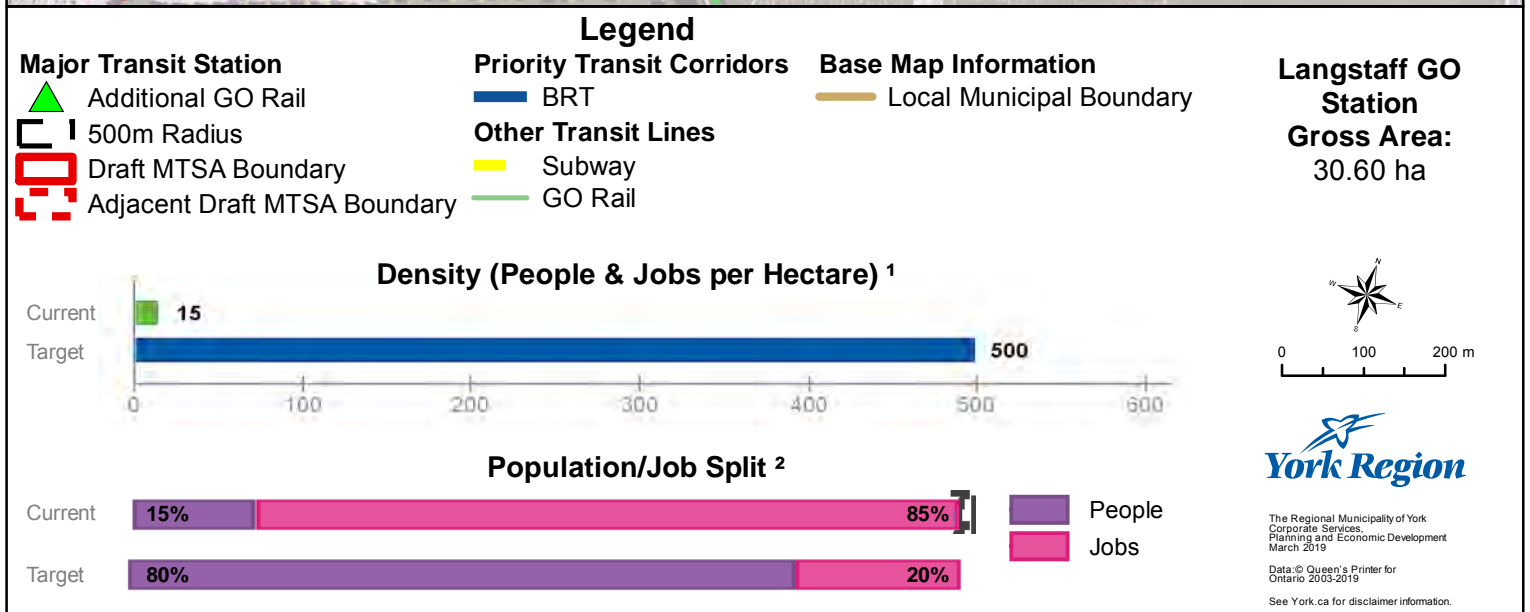
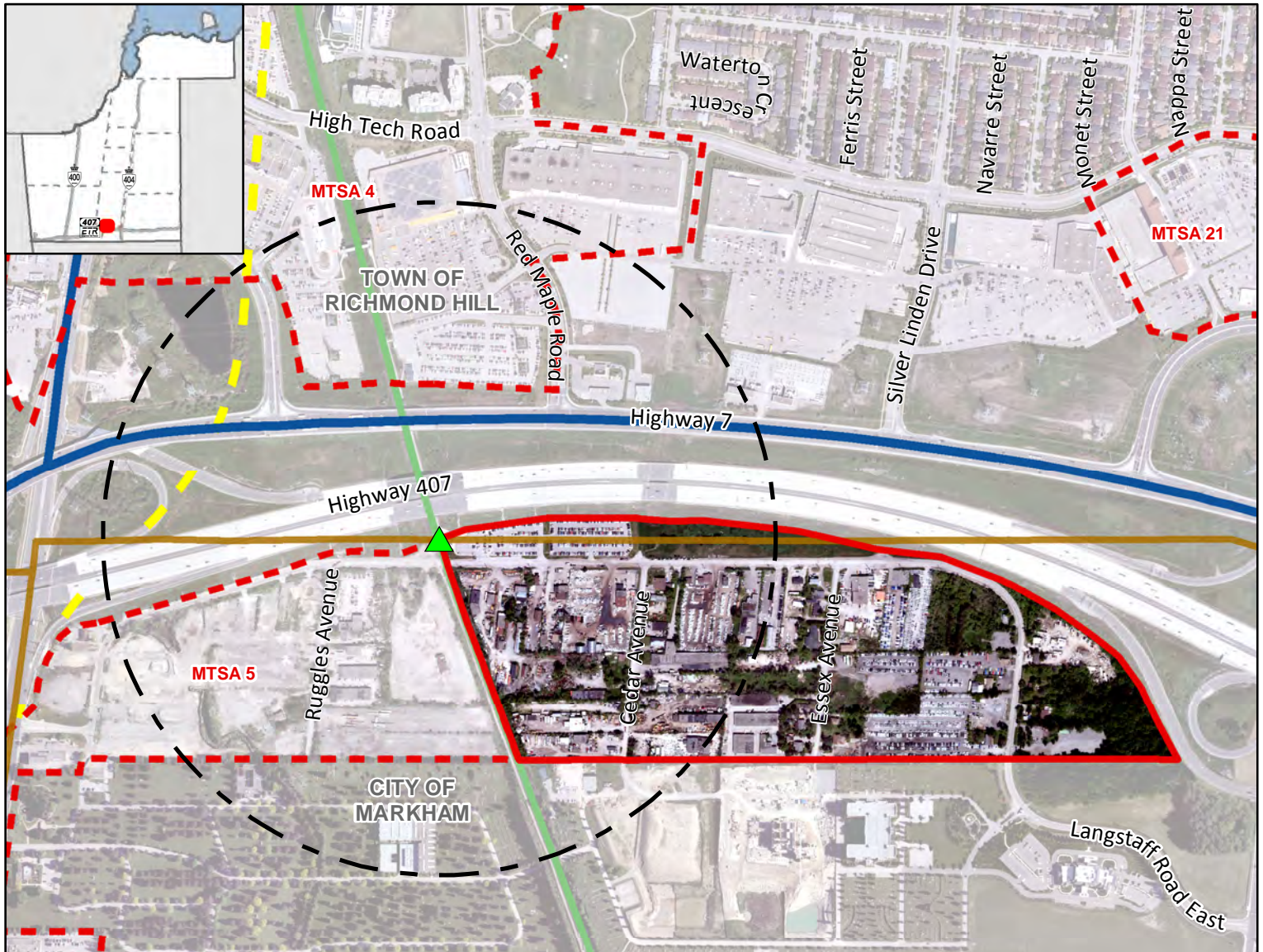
¹ Values are rounded to the nearest 5 People & Jobs per Hectare

² Values are rounded to the nearest 5%

Langstaff GO Station

On Richmond Hill GO Line Corridor

Near Langstaff Road and Cedar Avenue, Markham



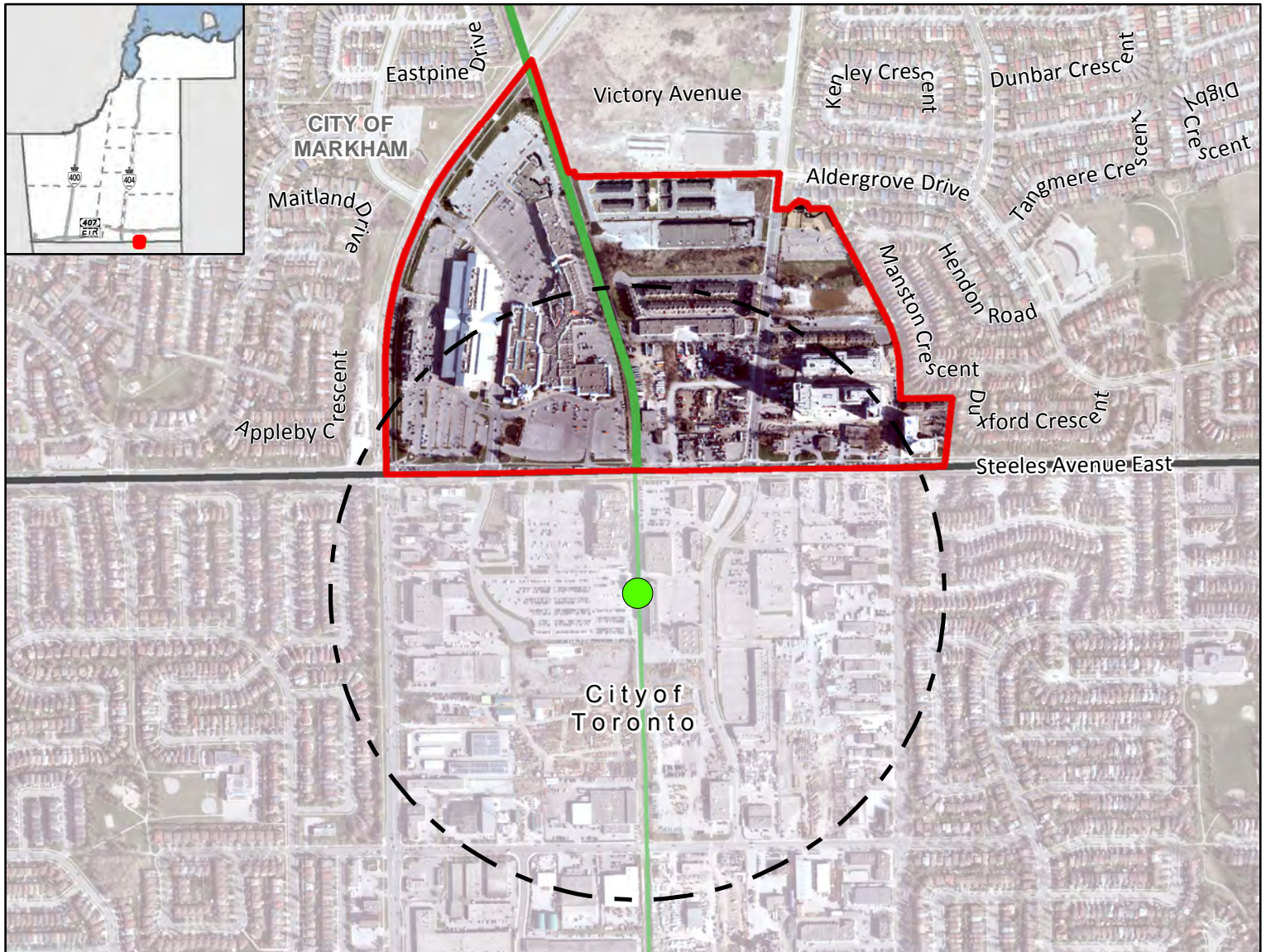
¹ Values are rounded to the nearest 5 People & Jobs per Hectare

² Values are rounded to the nearest 5%

Milliken GO Station

On Stouffville GO Line Corridor

Near Steeles Avenue and Kennedy Road, Markham/Toronto



Legend

Major Transit Station

● Required GO Rail

□ 500m Radius

□ Draft MTSA Boundary

Priority Transit Corridors

— GO Rail

Other Transit Lines

— GO Rail

Base Map Information

— Regional Municipal Boundary

Milliken GO Station

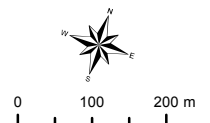
Gross Area:

39.88 ha

Density (People & Jobs per Hectare) ¹



Population/Job Split ²



York Region

The Regional Municipality of York
Corporate Services,
Planning and Economic Development
March 2019

Data © Queen's Printer for
Ontario 2003-2019
See York.ca for disclaimer information.

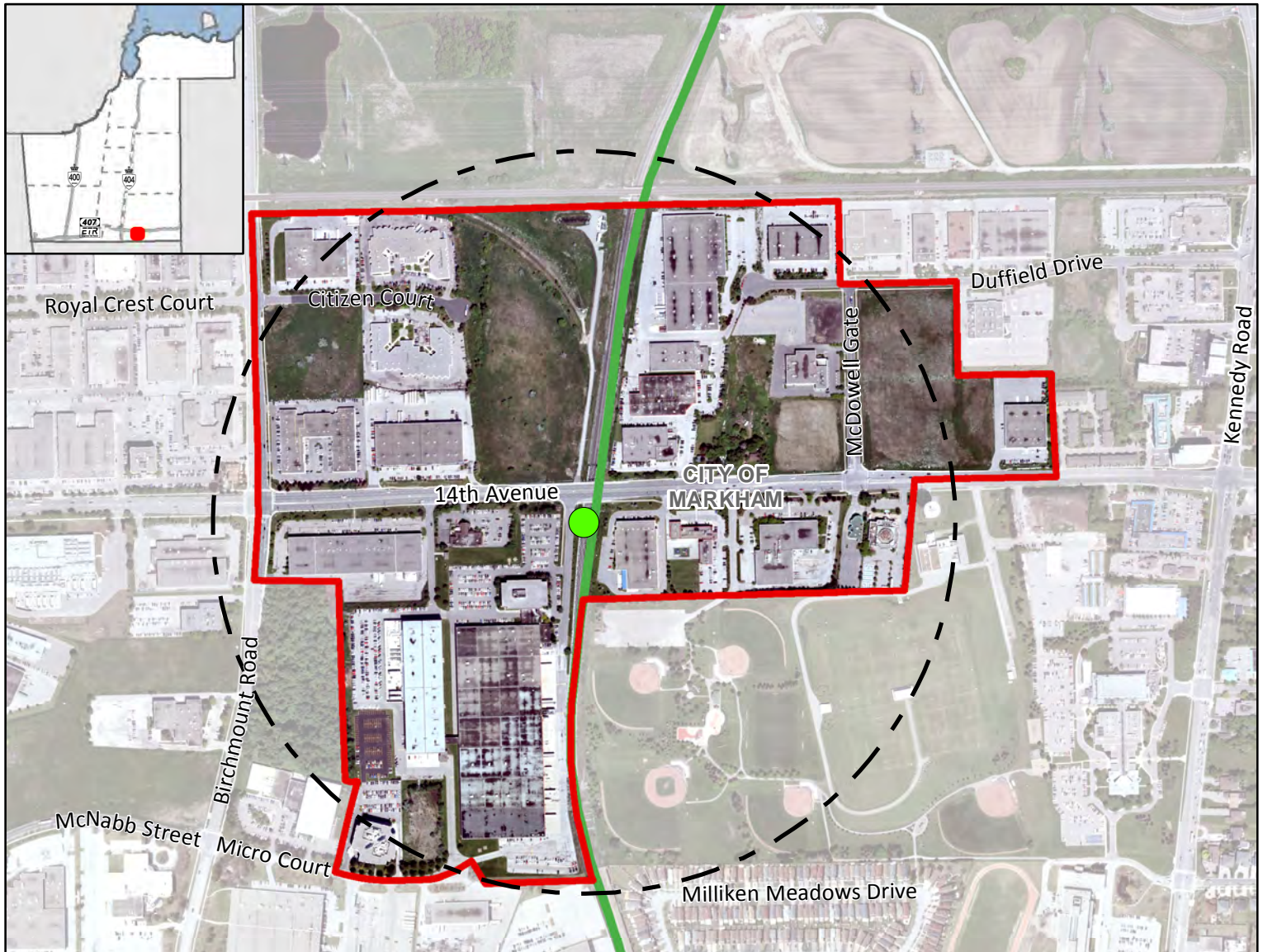
¹ Values are rounded to the nearest 5 People & Jobs per Hectare

² Values are rounded to the nearest 5%

14th Avenue GO Station

On Stouffville GO Line Corridor

Near 14 Avenue & Birchmount Road, Markham



Legend

- Major Transit Station**
- Required GO Rail
 - 500m Radius
 - Draft MTSA Boundary

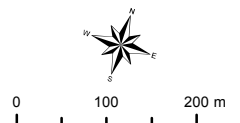
- Priority Transit Corridors**
- GO Rail

14th Avenue GO Station
Gross Area:
 60.30 ha

Density (People & Jobs per Hectare) ¹



Population/Job Split ²



The Regional Municipality of York
 Corporate Services,
 Planning and Economic Development
 March 2019
 Data © Queen's Printer for
 Ontario 2003-2019
 See York.ca for disclaimer information.

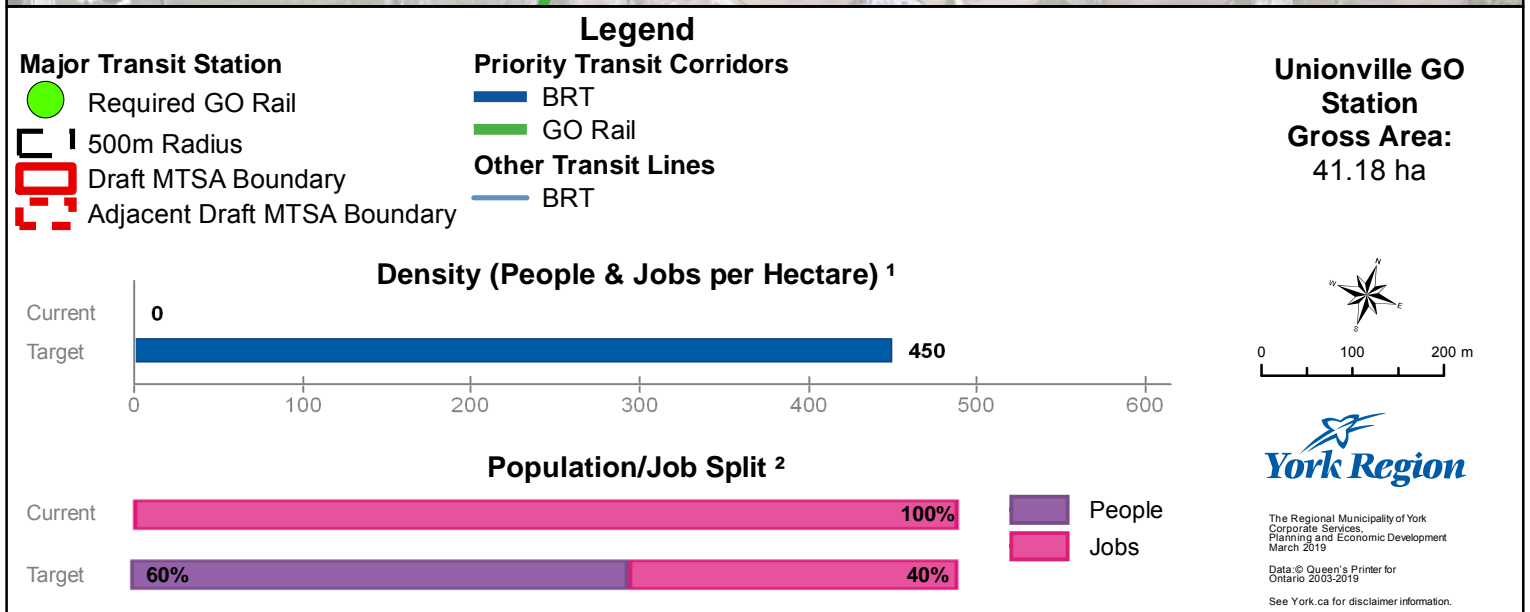
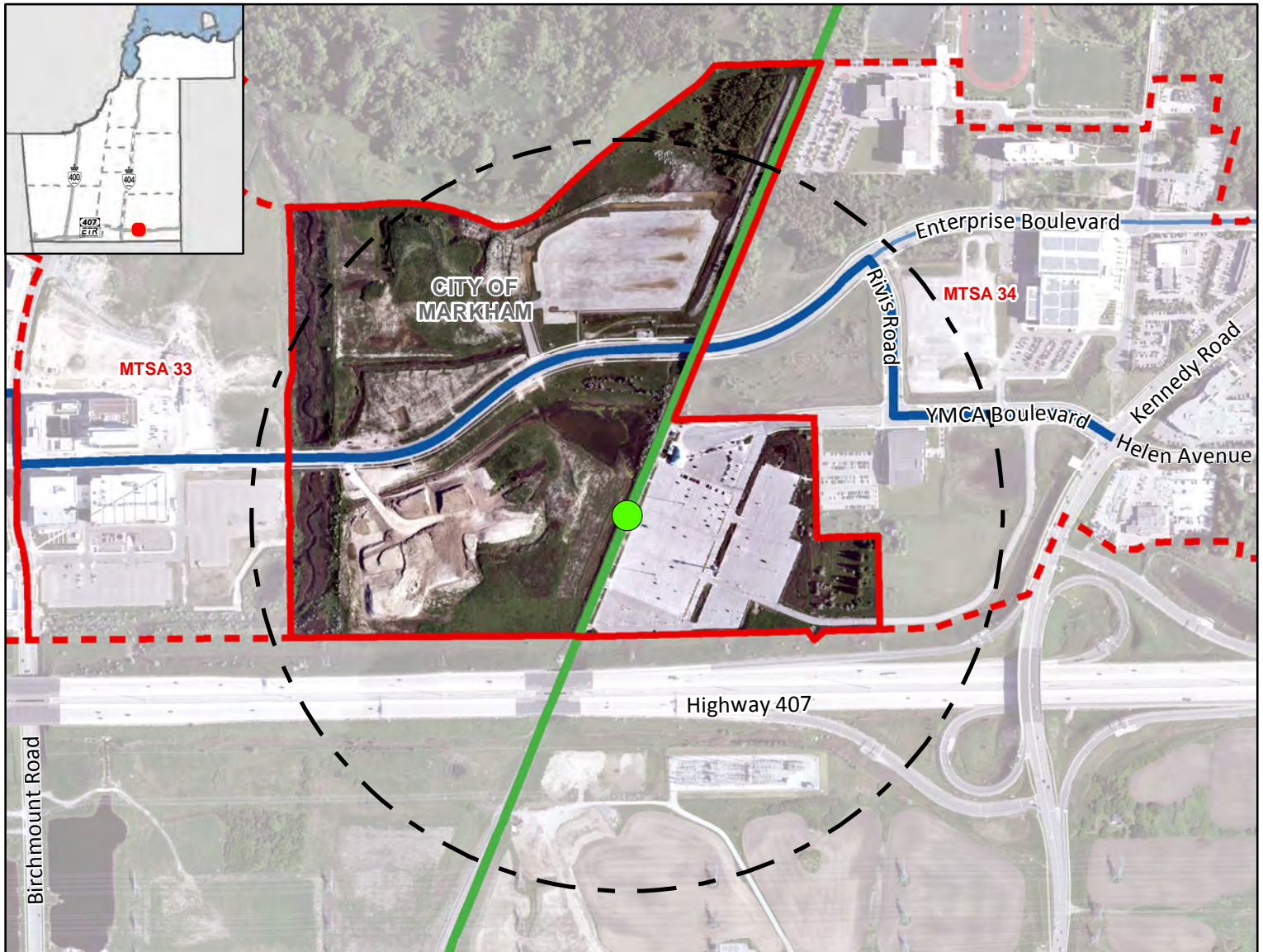
¹ Values are rounded to the nearest 5 People & Jobs per Hectare

² Values are rounded to the nearest 5%

Unionville GO Station

On Stouffville GO Line Corridor

Near Enterprise Boulevard at Rivi's Road, Markham



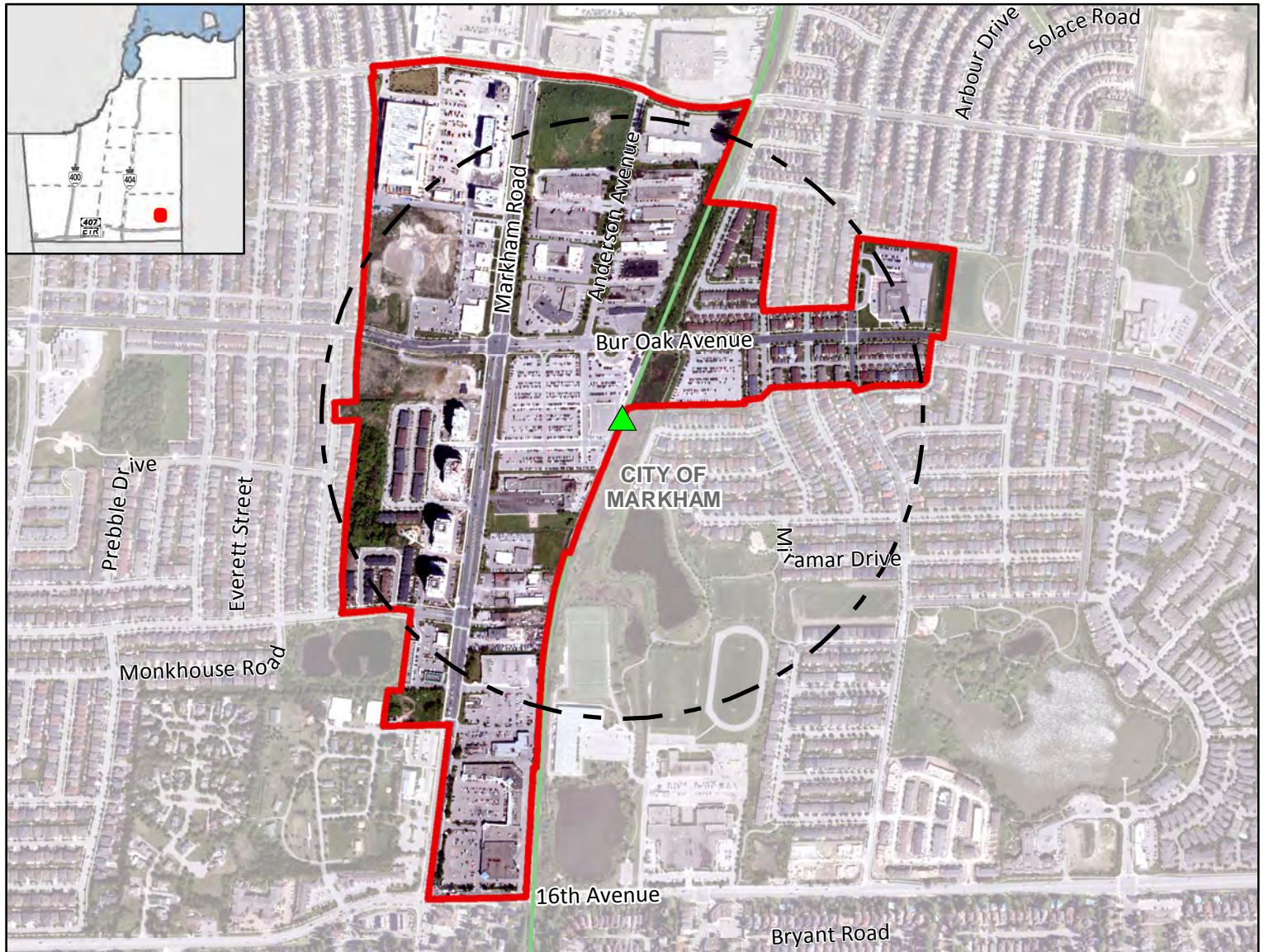
¹ Values are rounded to the nearest 5 People & Jobs per Hectare

² Values are rounded to the nearest 5%

Mount Joy GO Station

On Stouffville GO Line Corridor

Near Bur Oak Avenue and Markham Road, Markham



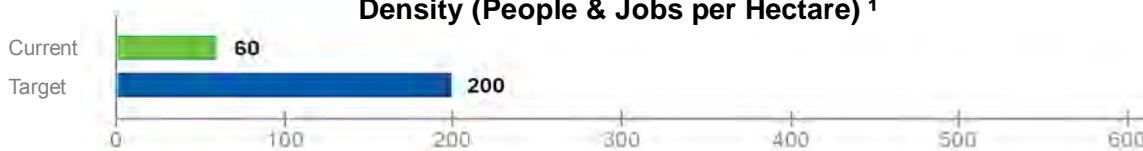
Legend

- Major Transit Station**
- Additional GO Rail
- 500m Radius
- Draft MTSA Boundary

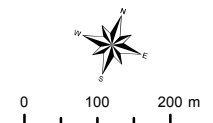
- Other Transit Lines**
- GO Rail

Mount Joy GO Station
Gross Area:
 62.78 ha

Density (People & Jobs per Hectare) ¹



Population/Job Split ²



The Regional Municipality of York
 Corporate Services,
 Planning and Economic Development
 March 2019

Data © Queen's Printer for
 Ontario 2003-2019
 See York.ca for disclaimer information.

¹ Values are rounded to the nearest 5 People & Jobs per Hectare

² Values are rounded to the nearest 5%