

EXECUTIVE SUMMARY

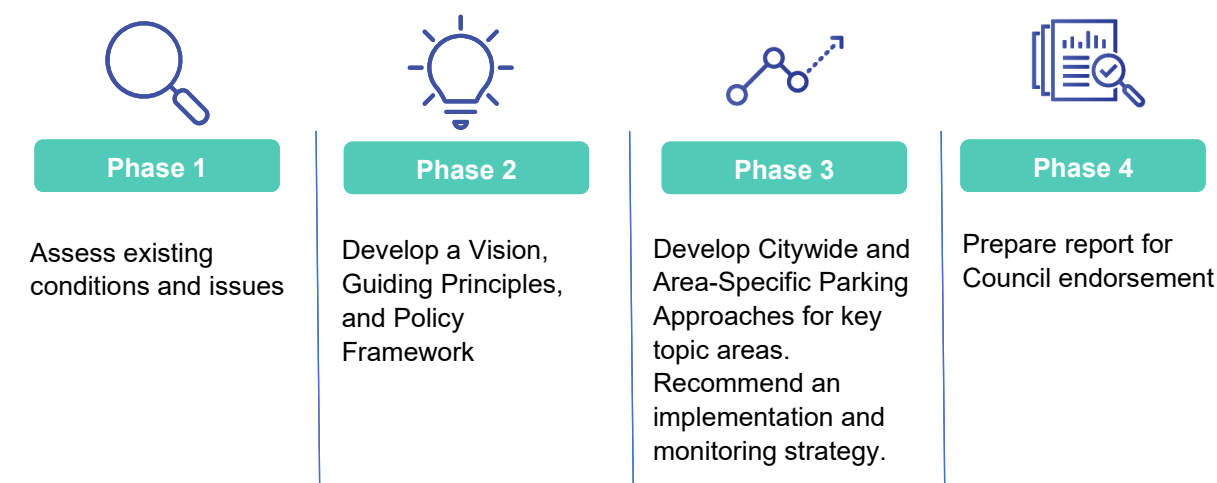
PURPOSE AND OBJECTIVES

The purpose of the City of Markham Citywide Parking Strategy (CWPS) is to establish a policy framework to guide the planning, management, and provision of parking in Markham. This strategy was developed in alignment with Markham's overarching city-building objectives and complement the ongoing Markham Transportation Master Plan and the forthcoming Official Plan Review.

The CWPS positions parking as an essential component of a complete and sustainable transportation system. It addresses residential parking needs, supports local businesses, advances a continued shift toward a multi-modal travel, contributes to the City's climate and sustainability goals, and prepares for emerging trends such as micromobility, electric vehicles (EVs), and connected and automated vehicles (CAVs).

STUDY PROCESS AND ENGAGEMENT

The CWPS is organized into four study phases:



A robust engagement program informed all phases of the study. Input was obtained from Council, internal and external stakeholders, and the community through workshops, focus groups, pop-up events, and an online platform. Key themes emerging from engagement included:

- The desire for appropriate parking standards and area-specific parking solutions,
- Support for sustainable travel modes and municipal paid parking,



- The importance of equity and accessibility, and
- The desire for improved trail and recreational parking.

These insights emphasize that parking management must respond to diverse local contexts and support City’s broader building objectives.

VISION AND FRAMEWORK

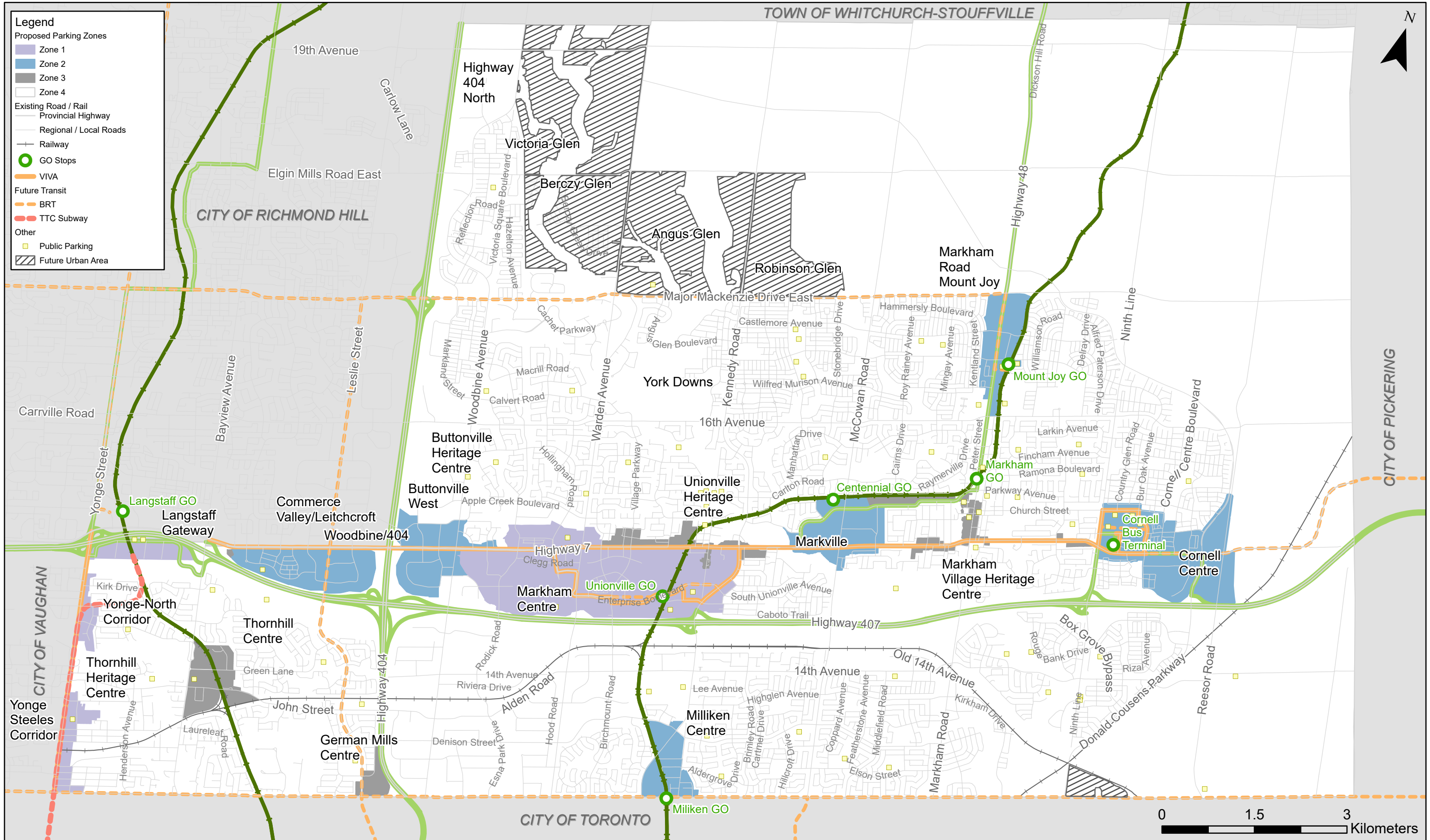
Markham’s vision for parking is to create adaptive area-specific policies, standards and programs that align with the City’s commitment to providing residents, visitors, and businesses with an efficient, safe, equitable, reliable, and convenient transportation system and support the City’s transformation into a more sustainable, multi-modal, and livable city.

Supporting the vision are four parking principles:



To enable a context-sensitive approach to parking management, the CWPS recommended that four Parking Zone Map be created in the City as presented in **Exhibit 1**. A Parking Zone Criteria is recommended to evaluate key drivers affecting parking demand and guide the geographic delineation and assignment of Markham’s Parking Zones. The criteria consider access to frequent transit service, urban structure (including Provincial and Markham Official Plan designations), land use mix and density, availability of public parking, walkability and availability of cycling infrastructure, and the use of paid parking and other parking management measures.

Recommended Parking Zones



KEY POLICIES

Key parking policies were developed in alignment with the CWPS vision and framework:

1. Develop Parking Standards to complement the City’s Parking Zones
2. Develop a citywide Transportation Demand Management Program
3. Transition from unpaid to paid public parking in Zones 1 and 2
4. Ensure equitable allocation of curb space, manage public assets, and support mobility through appropriate curbside management practices
5. Expand the citywide on-street parking system
6. Develop and leverage an integrated smart parking technology platform to support various functions including parking and curbside delivery while minimizing deployed infrastructure.
7. Develop parking considerations for connected and automated vehicles (CAV) for on-street and off-street parking
8. Develop and leverage an integrated smart parking technology platform to support various functions including parking and curbside delivery while minimizing deployed infrastructure
9. Develop a citywide parking policy for micromobility devices
10. Develop appropriate parking supply and improve multi-modal access at high-priority trailheads and major parks

GOVERNANCE AND FINANCE PRINCIPLES

Parking governance and finance principles were also developed to guide future decision-making related to parking:

- Support the CWPS Vision
- Balance between revenue optimization and community benefits in meeting the City’s strategic objectives.
- Maintain City control over planning, operations, and financial objectives.
- Optimize the integration of parking into the overall multi-modal transportation network.
- Develop parking policies, procedures, and guidelines that provide accountability, traceability of decisions, and openness.



- Provide public parking services where revenue covers all parking costs with no contribution from the property tax base.

IMPLEMENTATION AND MONITORING

The implementation plan outlines the actions required to deliver the CWPS recommendations. Actions are sequenced to balance short-term solutions with long-term strategic planning. Implementation will be initiated by City staff at the appropriate times and subject to Council approval and available sources.

The short-term action items to be completed within five years include:

- Incorporate the Parking Zones Map into the Official Plan
- Update Parking and TDM Standards
- Review the Residential Overnight On-Street Parking Permit Program
- Develop a Micromobility Parking Strategy
- Develop a Curbside Management Guideline to address community needs for on-street parking and delivery

An action to be undertaken on an ongoing basis is:

- Conduct educational campaigns to promote public awareness of parking regulations and to encourage existing buildings to be upgraded with EV and micromobility parking

The future action items to be initiated beyond five years include:

- Develop a Municipal Parking Management Plan to address paid parking and the delivery of additional parking infrastructure
- Create Parking Management Plans for Heritage Areas
- Develop a municipal electric vehicle (EV) parking management plan to guide the delivery of municipal EV charging infrastructure
- Review and integrate smart parking technology into municipal parking operations
- Develop a Parks and Trails Parking Management Plan to improve access to key recreational destinations
- Develop a Connected and Autonomous Vehicles (CAV) Parking Plan, including standards for CAV infrastructure

To track implementation progress, the CWPS includes a Key Actions Tracking Form for internal use and recommends the following recurring reviews:



- Parking governance structure review every 3 to 5 years
- Annual review of municipal parking assets
- Annual or semi-annual review of parking fees
- Annual parking budget program and capital needs plan

