



# **Accessibility Advisory Committee**

## **May 26, 2025**



## Agenda

- 1. Introduction
- 2. How the McKay Art Centre is used
- 3. Tour of the Property
  - Main floor
  - Top floor
  - Basement
  - Garden
- 4. Committee's suggestions and feedback



# 1. Introduction



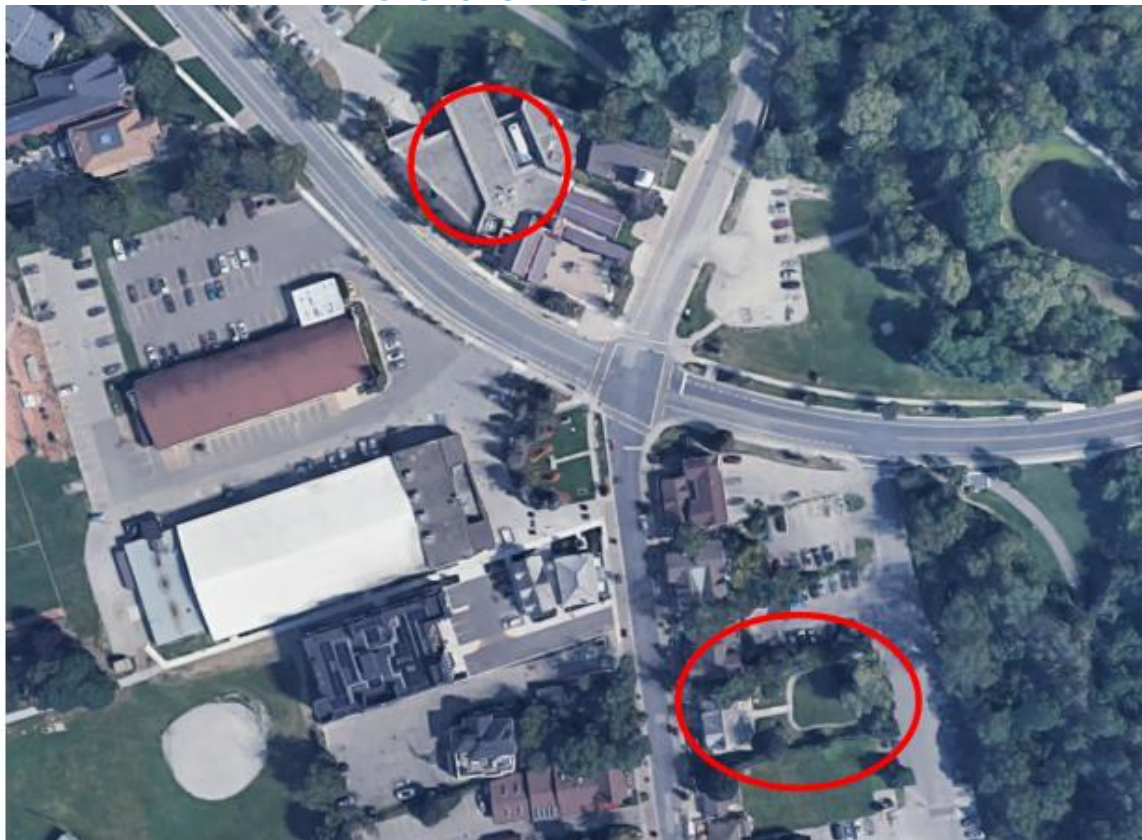
The Varley Art Gallery of Markham, 216 Main Street Unionville



## Introduction

Varley Art  
Gallery

MacKay Art  
Centre  
197 Main Street  
Unionville







## Introduction

MackKay Art  
Centre  
197 Main  
Street  
Unionville





# Introduction



F. H. Varley in his basement studio at 197 Main Street Unionville, Saturday,  
December 31, 1960



F. H. Varley, **Head of Kathy**, c. 1952-53, charcoal and graphite on paper, 38 cm x 32 cm. Collection of the Varley Art Gallery of Markham. Gift of the Estate of Kathleen Gormley McKay, 1996





## Introduction



Kathy McKay on the porch of the McKay Art Centre



## Introduction



McKay Basement today







## 2. How the building is used

	January to March	April to June	July to August	September to December
<b>Top Floor</b>	Unionville BIA Offices and Studio Rentals			
<b>Main Floor</b>	Studio Rentals	Exhibition Rentals	Summer Camp	Exhibition Rentals
<b>Basement</b>	Studio rentals, art classes		Summer Camp	Studio rentals, art classes
<b>Garden</b>		Rentals. Unionville Festival, Jazz Festival, etc.		



## 3. Objectives

- Circa 2008: Renovations were executed to make the 1850s heritage building usable for the community and programs
- The gardens were also updated. One ramp added
- The City met the AODA requirements for a Heritage building
- Since then the focus has been on maintenance and minor renovations
- The approach has been generally piecemeal or ad hoc
- We now want to hire a consultant to create a detailed report, and
- Develop a comprehensive long term plan for how best to proceed with improving the building's accessibility
- Getting this Committee's input and advice is the first step in that process



## 4. Property Tour



Main Public Entrance







## Main Entrance



Main Public Entrance





## Driveway at the North Side



Driveway and ramp access





## Ramp to Main Door



Front ramp





## Ramp to Main Door







## Main Door Threshold

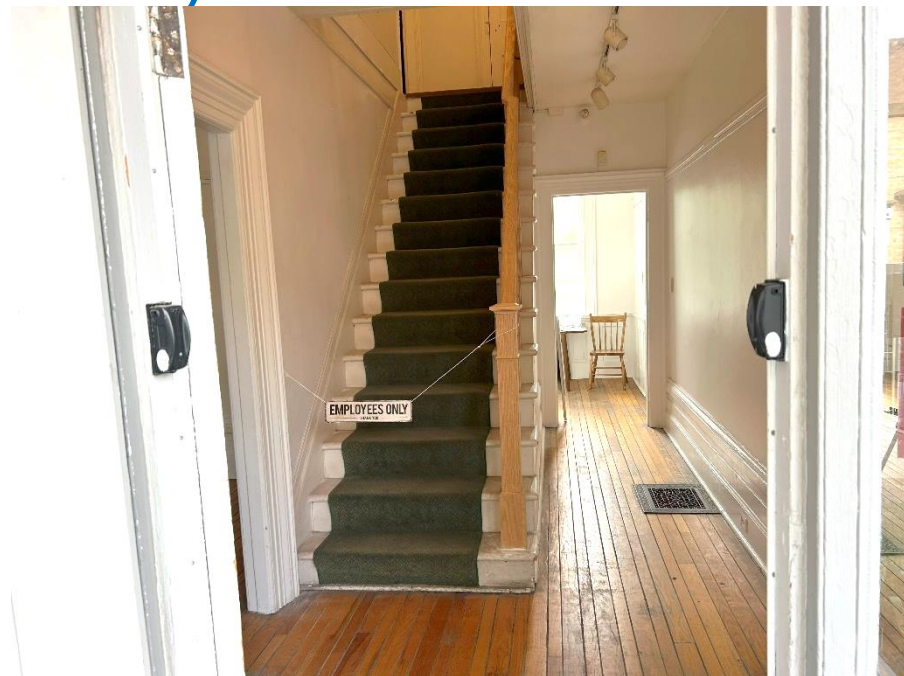
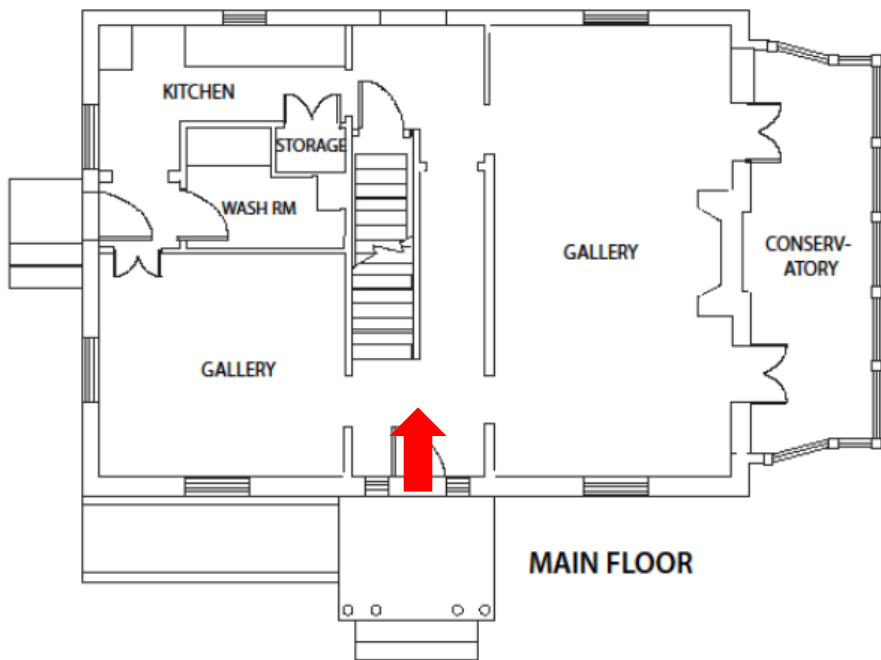


Front door threshold





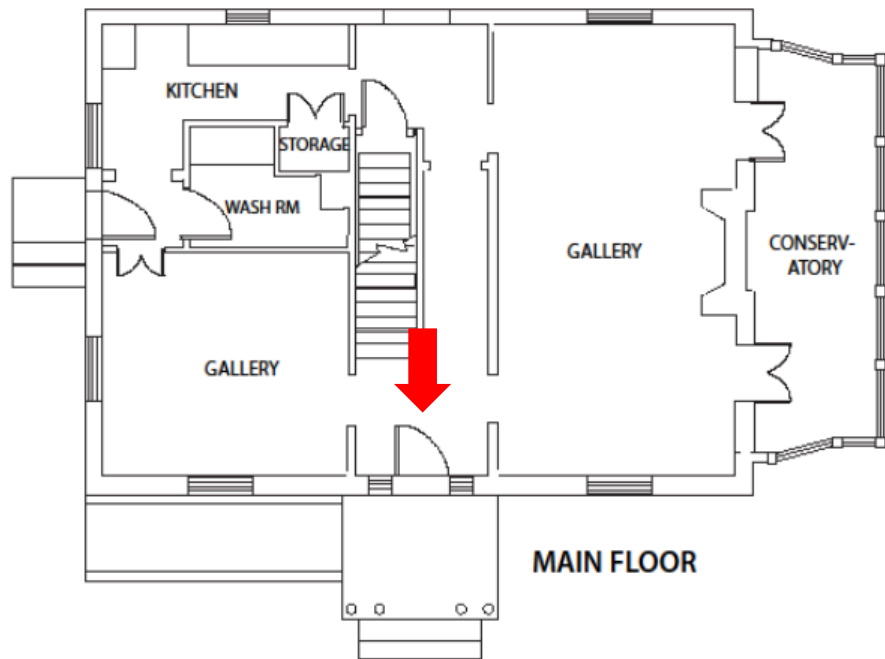
## Main Floor: Foyer



Main Floor Interior. Red arrows show viewpoint in the images at right



## Main Floor: Foyer



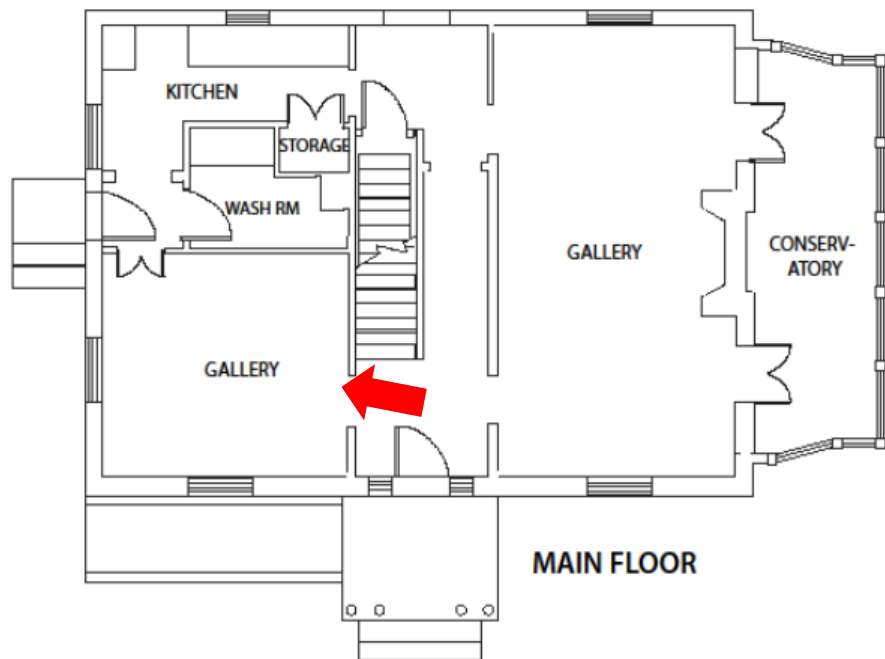
Main Floor Interior





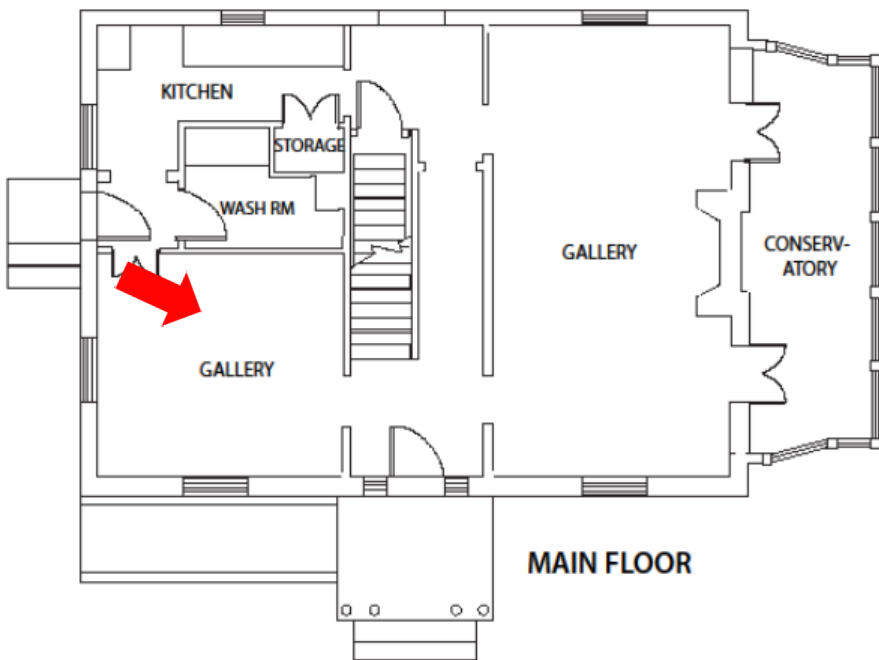


## Main Floor: Small Gallery/Studio



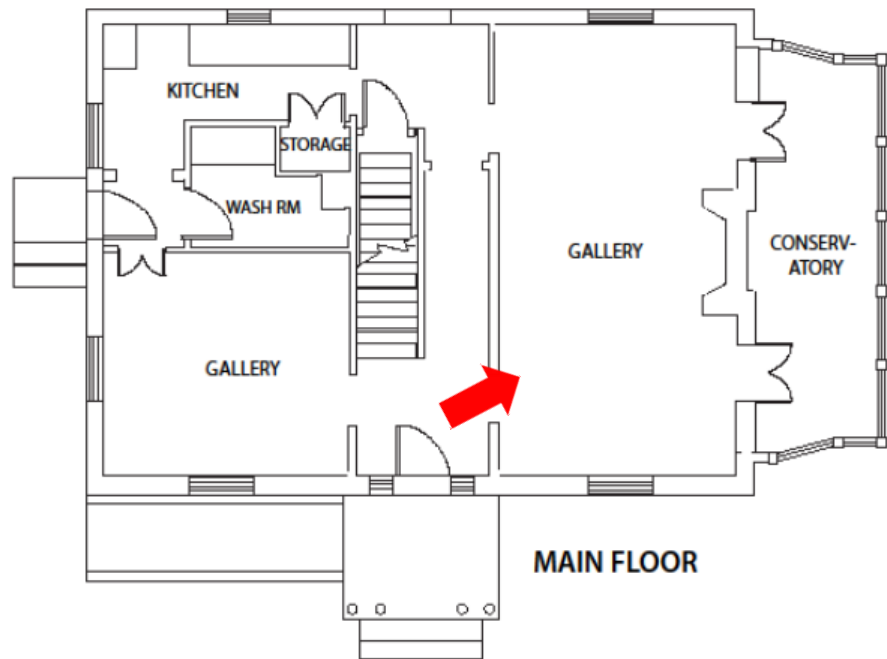


## Main Floor: Small Gallery/Studio



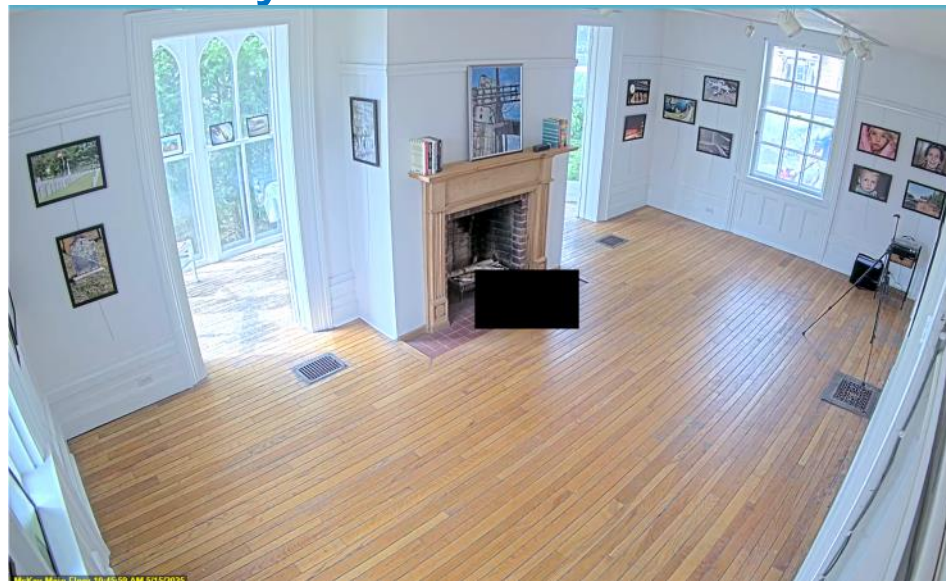
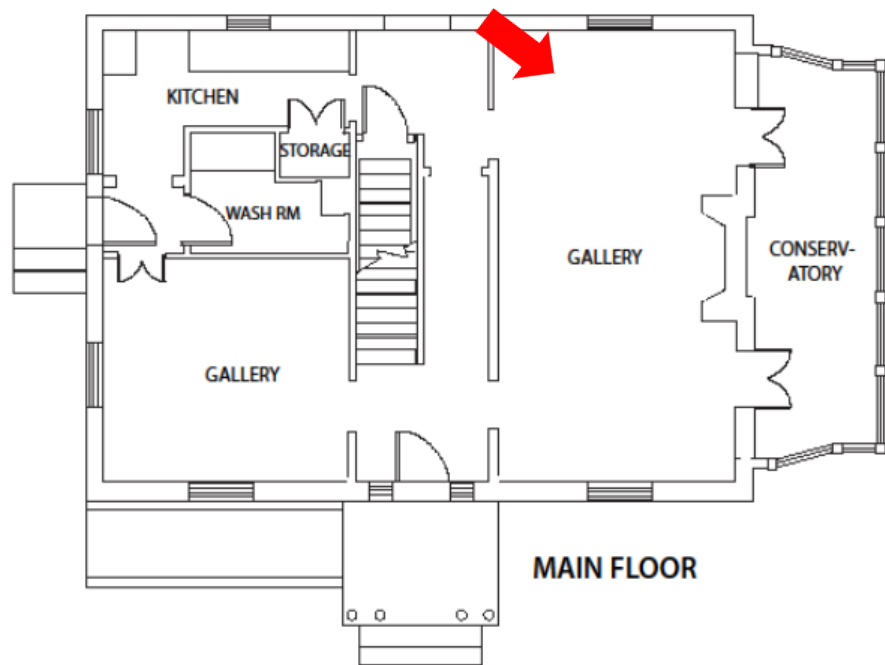


## Main Floor: Large Gallery/Studio





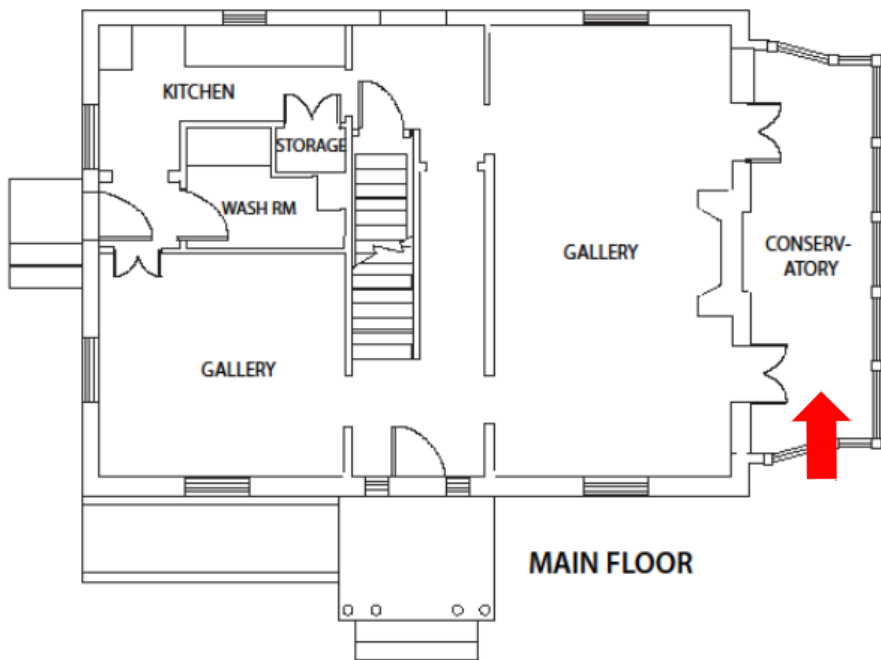
## Main Floor: Large Gallery/Studio







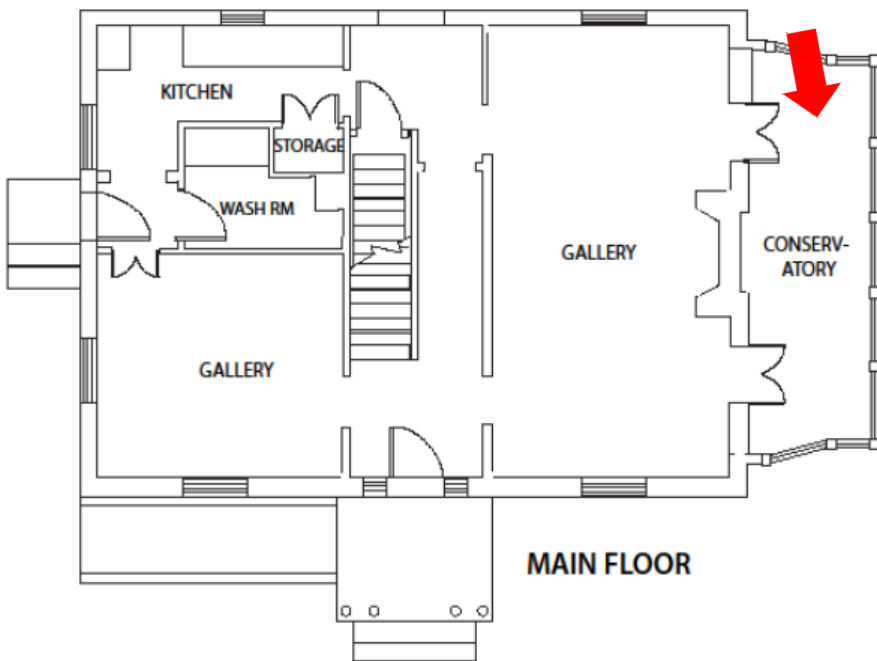
## Main Floor: Conservatory





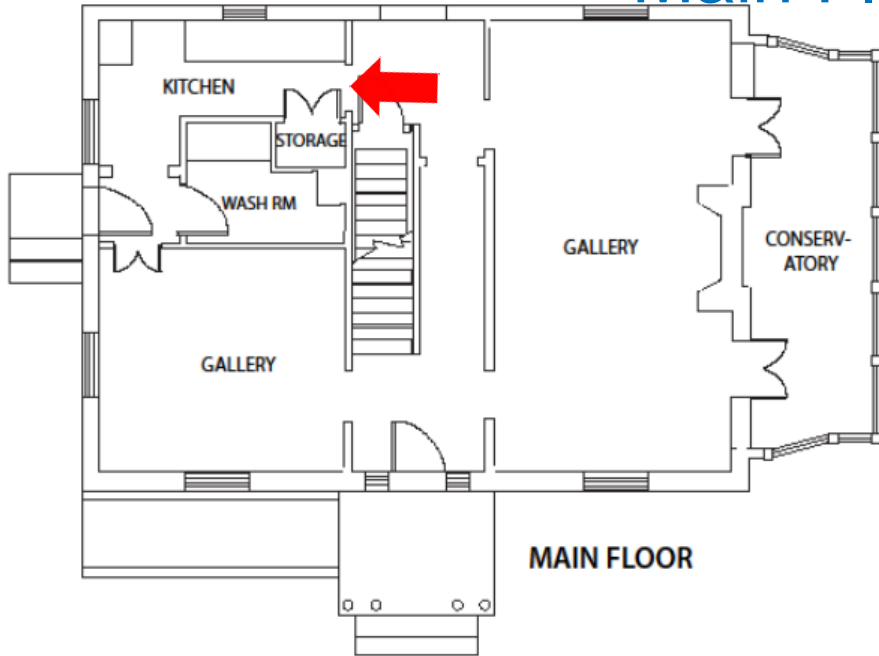


## Main Floor: Conservatory



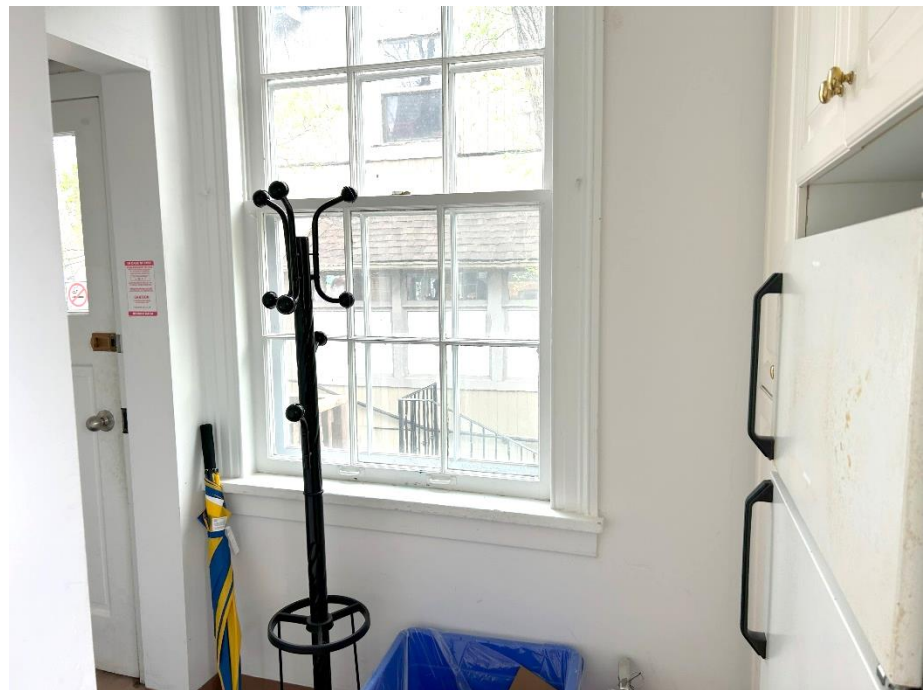
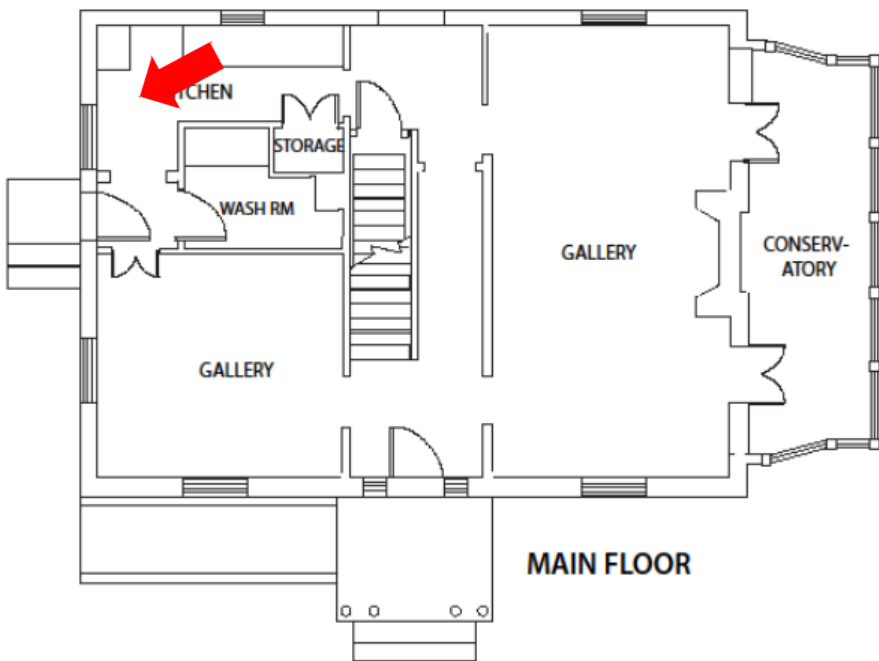


## Main Floor: Kitchen





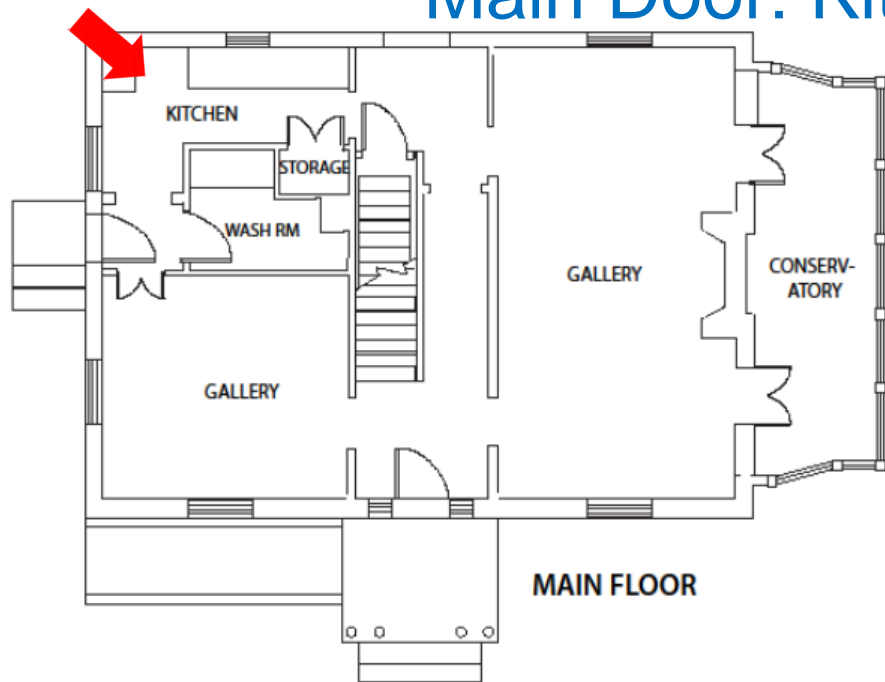
## Main Floor: Kitchen to Side Door





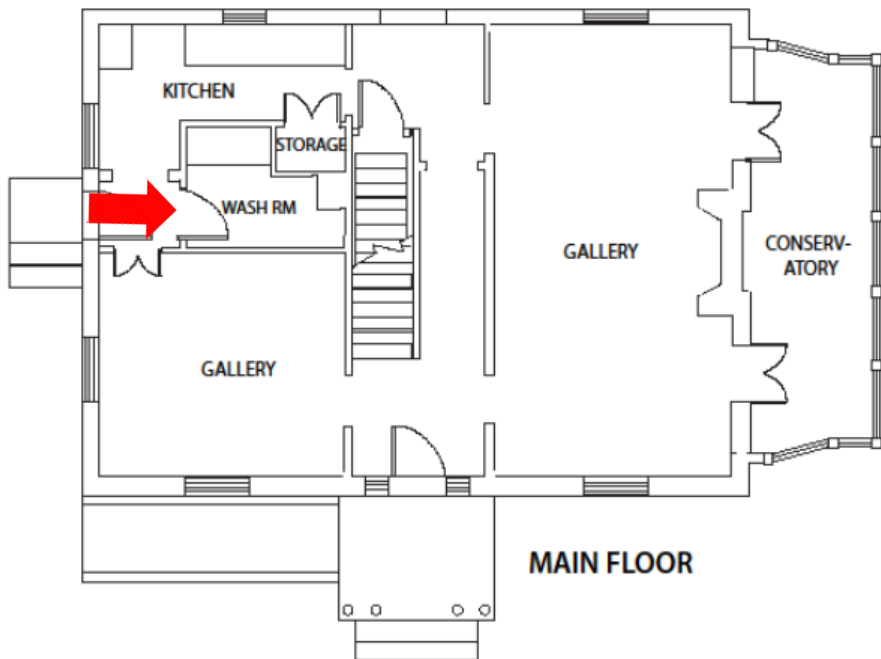


## Main Door: Kitchen to Side Door



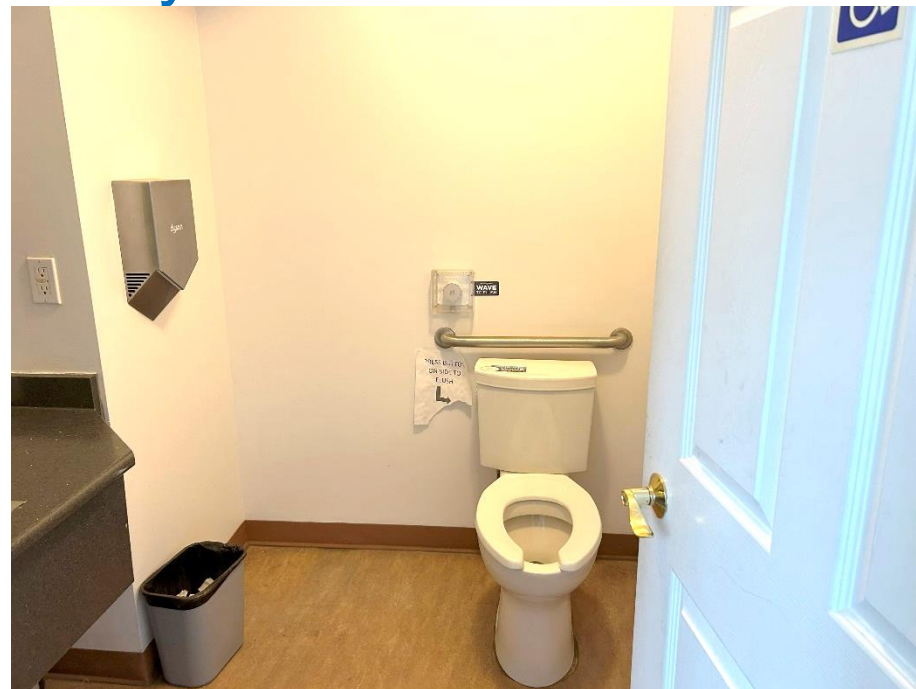
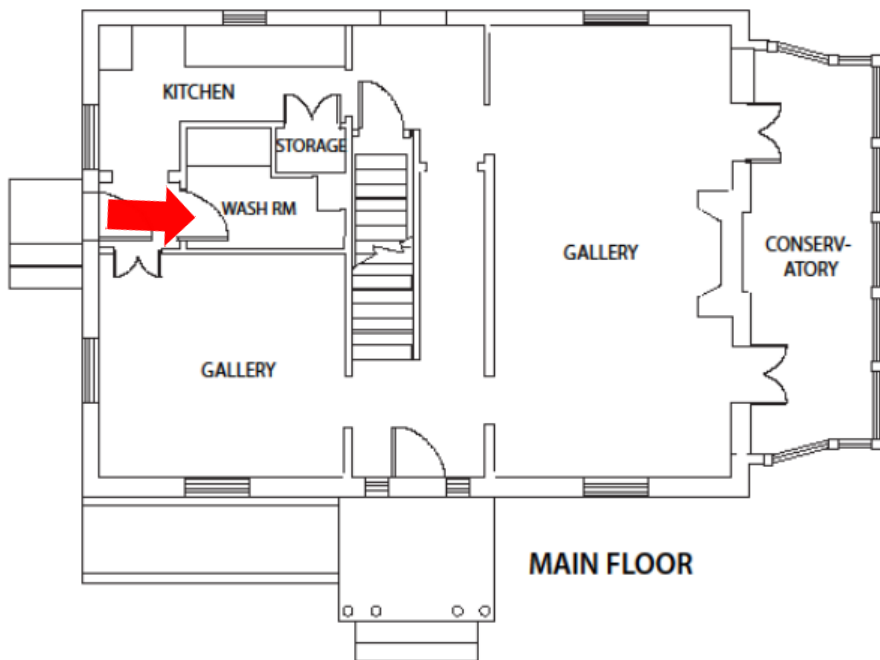


## Main Door: Accessibility Washroom





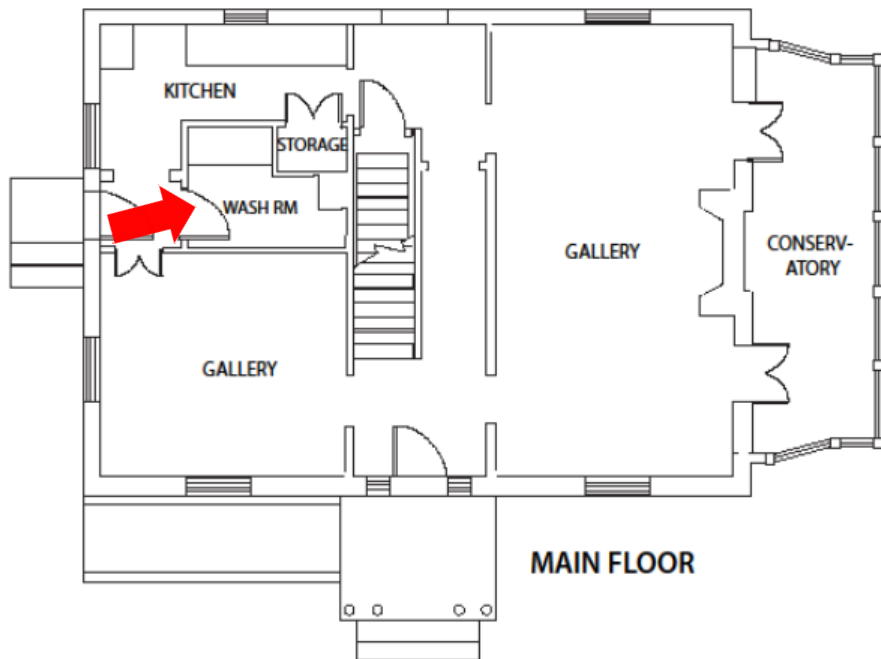
## Main Floor: Accessibility Washroom





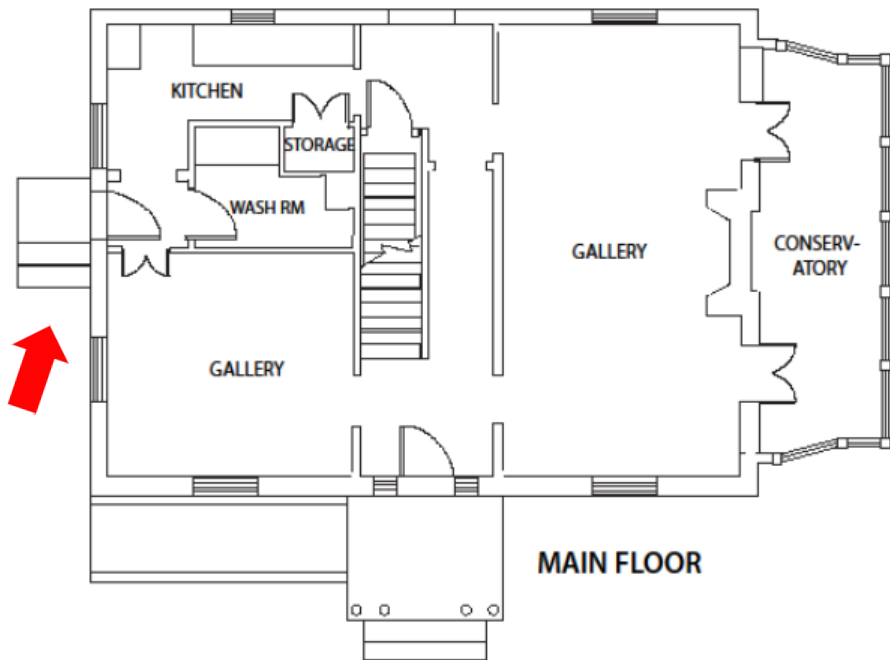


## Main Floor: Accessibility Washroom



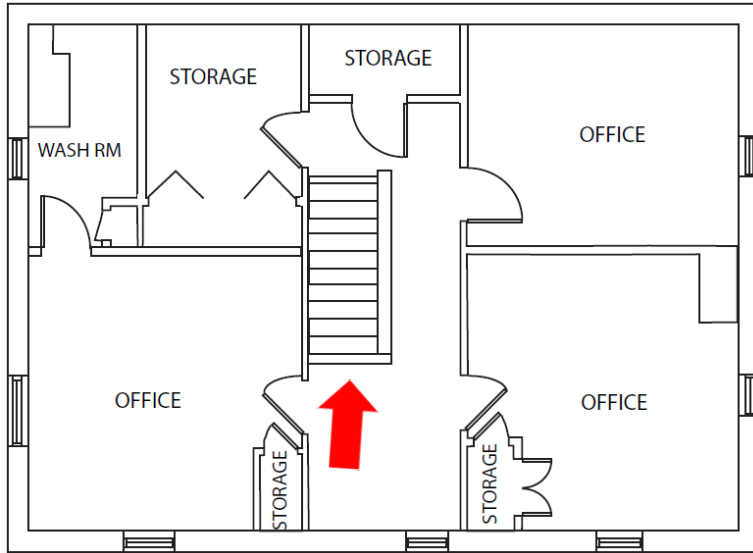


## Side Door Exterior

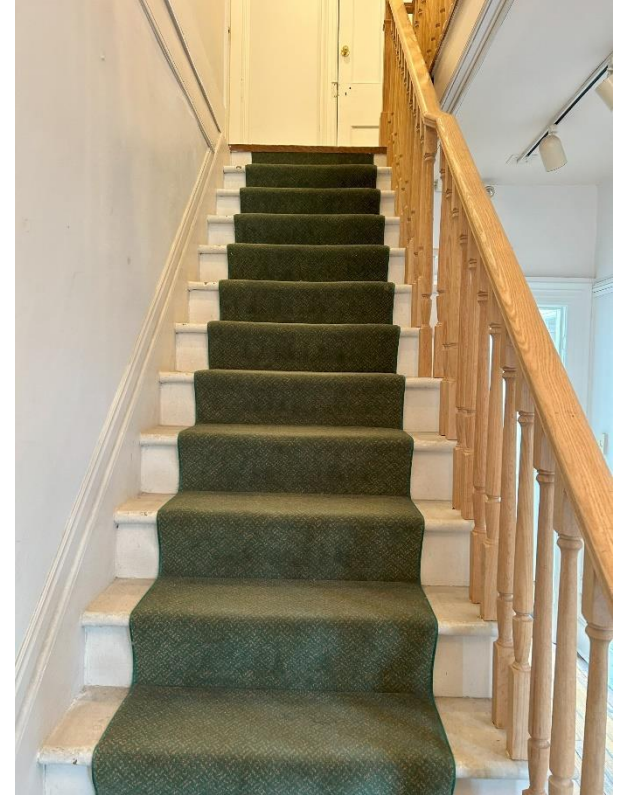




## Second floor: Stairs up



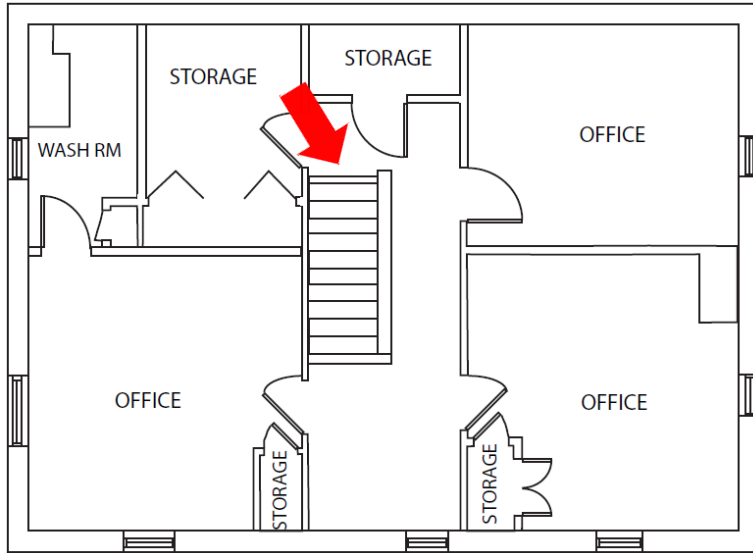
SECOND FLOOR







## Second floor: Landing

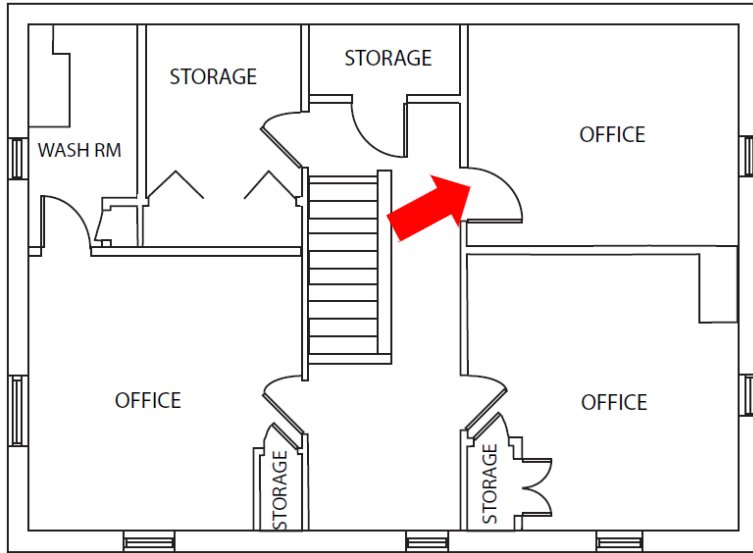


SECOND FLOOR





## Second Floor: Studio space

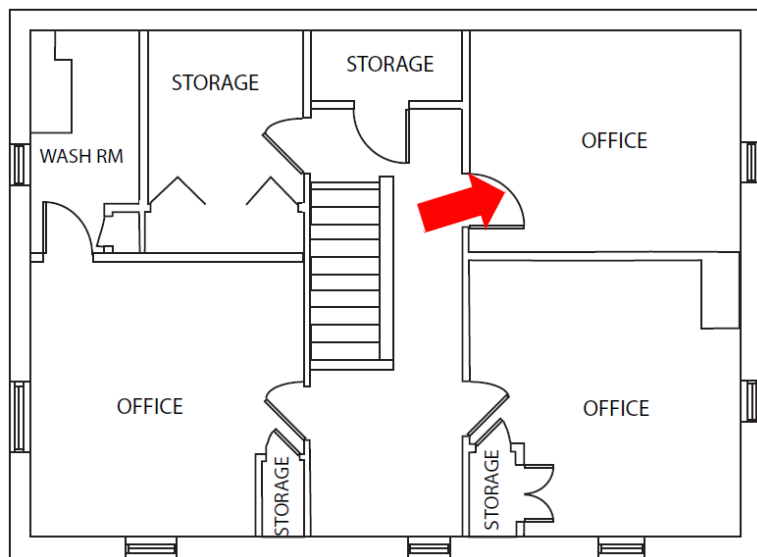


SECOND FLOOR





## Second Floor: Studio Space



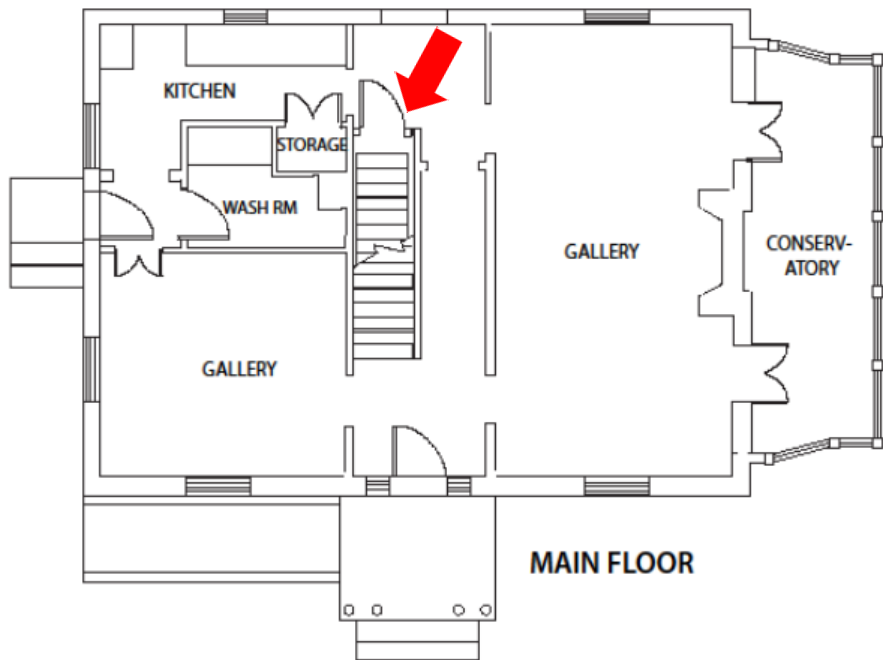
SECOND FLOOR





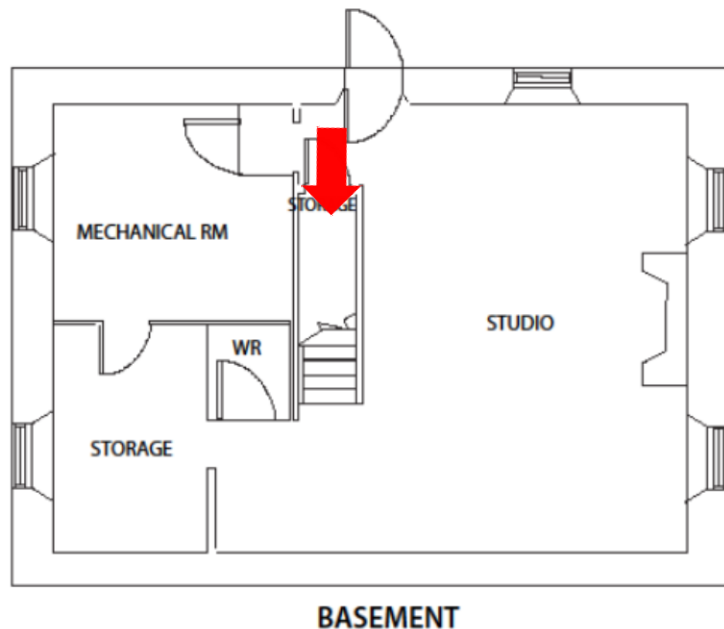


## Basement: Door from Main Floor



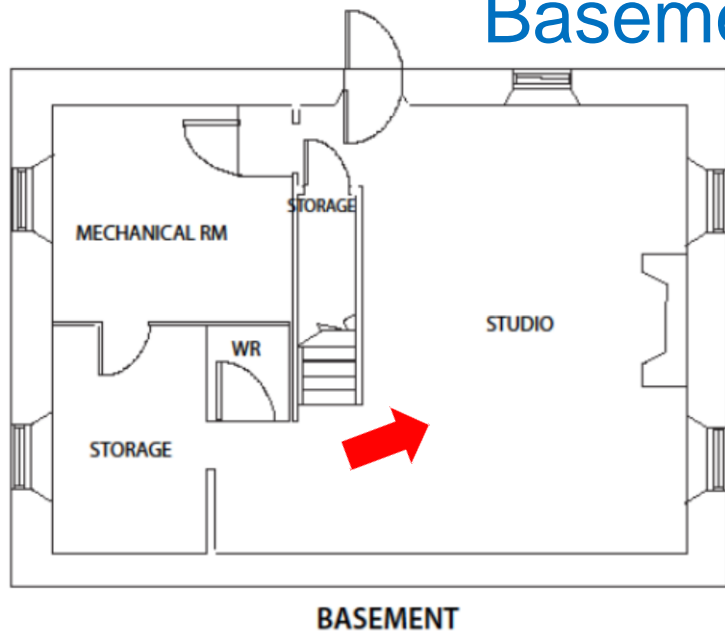


## Basement: Stairs down





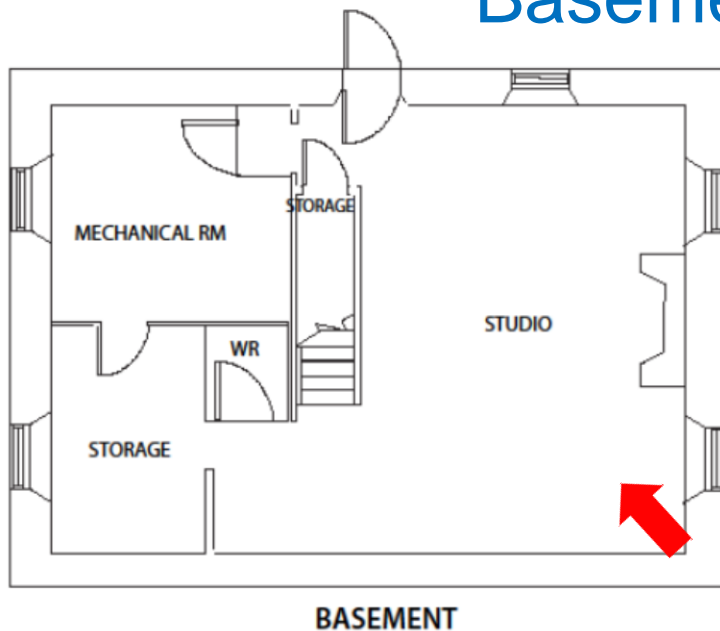
## Basement: Main Studio





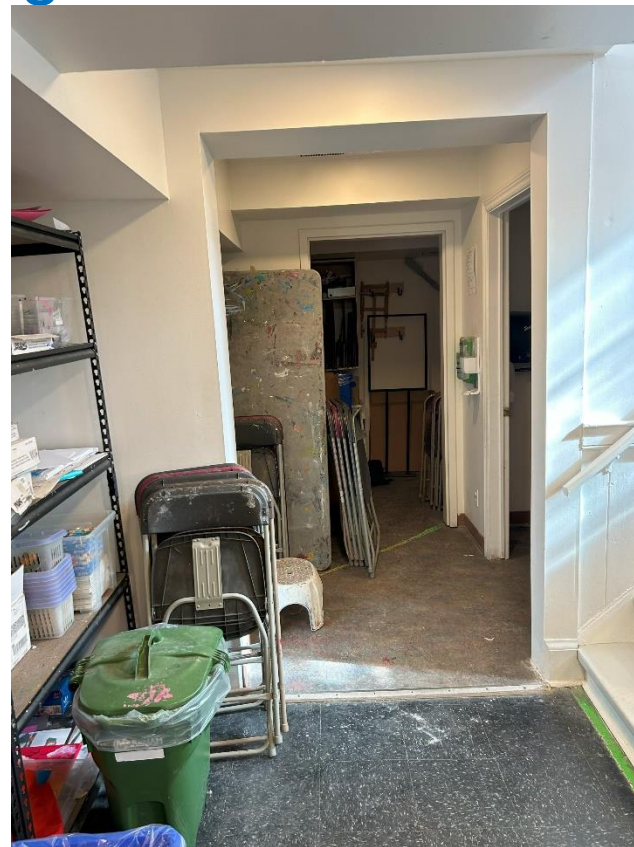
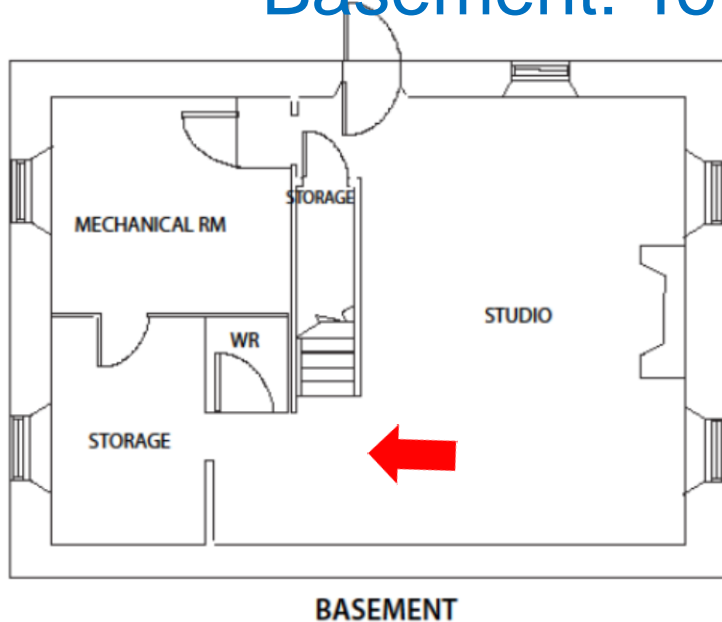


## Basement: Main Studio



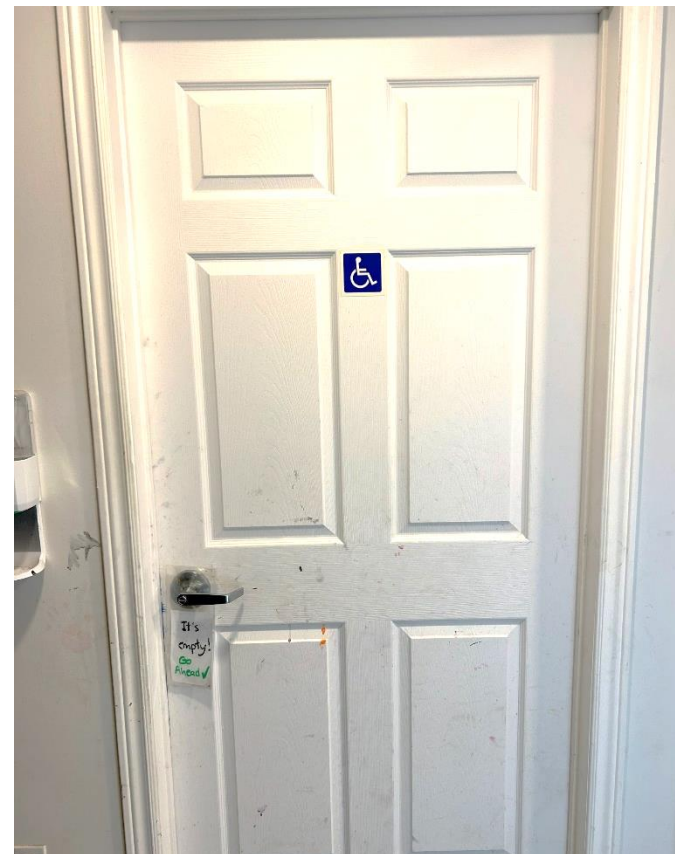
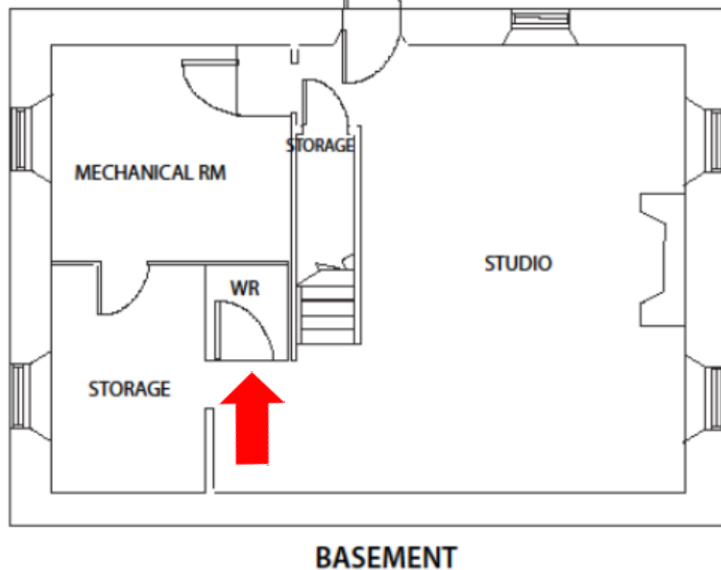


## Basement: Towards Storage and WC





## Basement: Accessibility Washroom





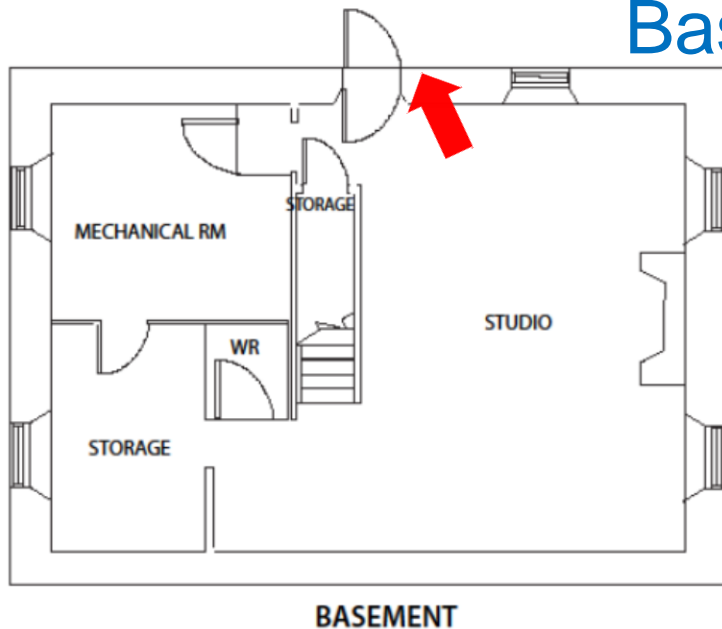
## Basement: Accessibility Washroom







## Basement: Exit





## Garden



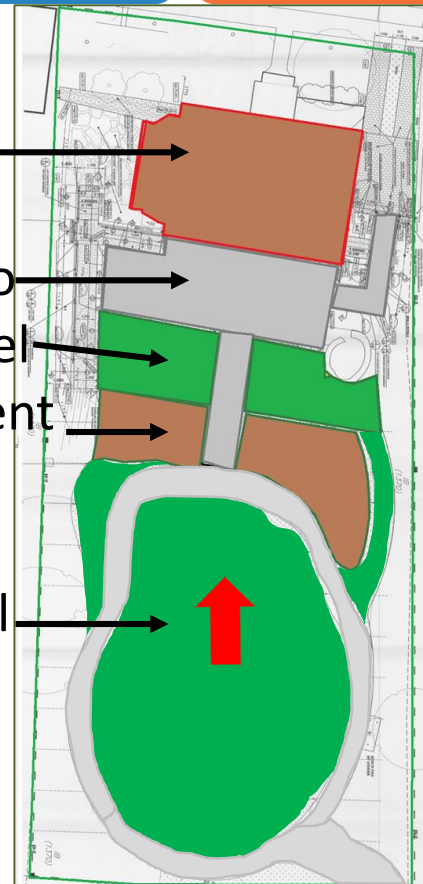
House

Paved patio

Middle level

Embankment

Lower level



Back garden looking towards the McKay Art Centre



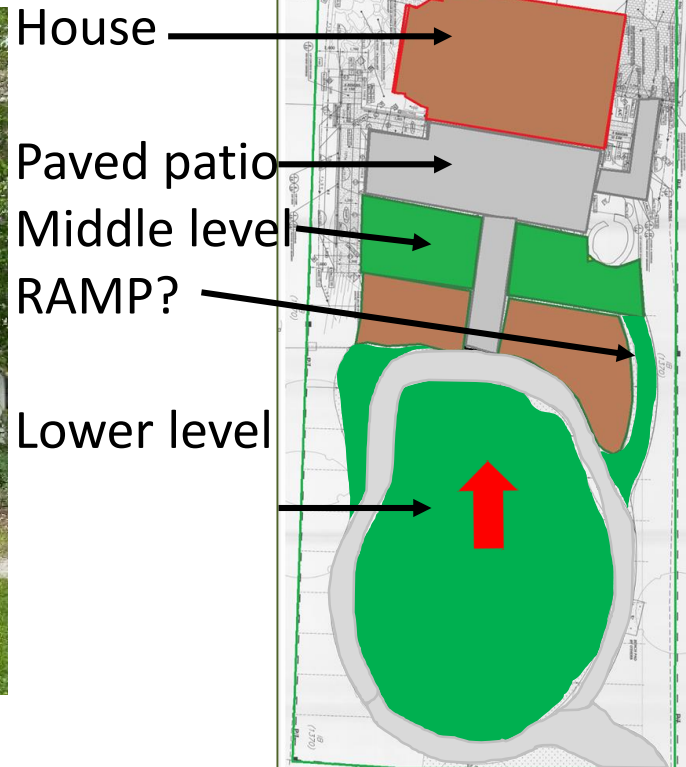


## Garden: From the House





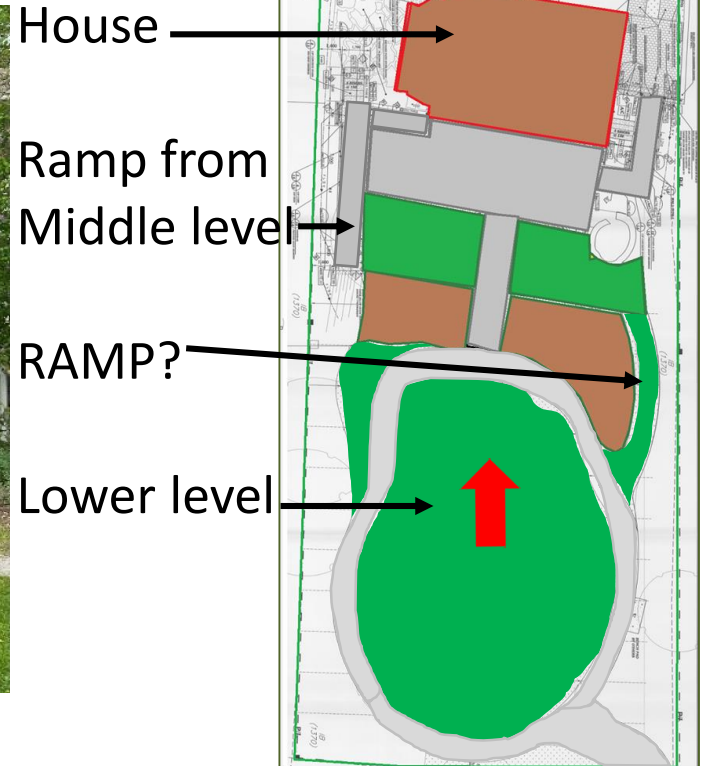
## Garden





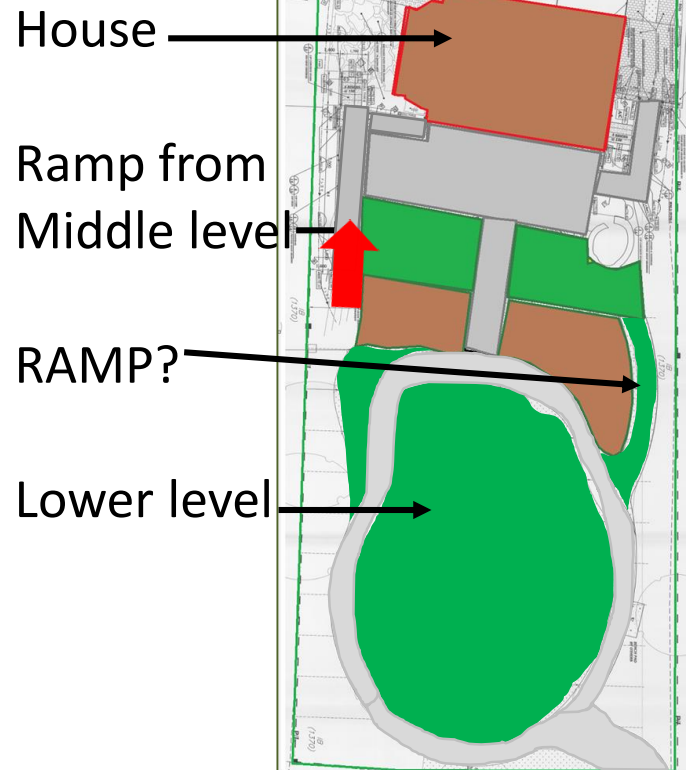


## Garden





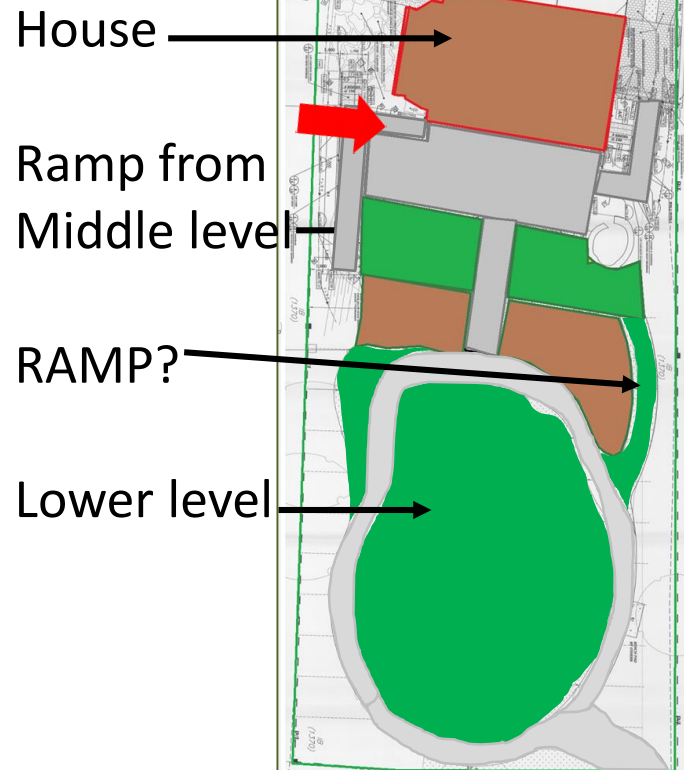
## Garden







## Garden





## Garden: Ramp From Mid Level to Patio







## Garden: Basement Door





## Garden: Basement Door







## 4. Committee's Feedback

We want  
to hear from you

